

# Bighorn Sheep and Mountain Goat License Recommendations

Andy Holland - Big Game Manager  
Colorado Parks and Wildlife



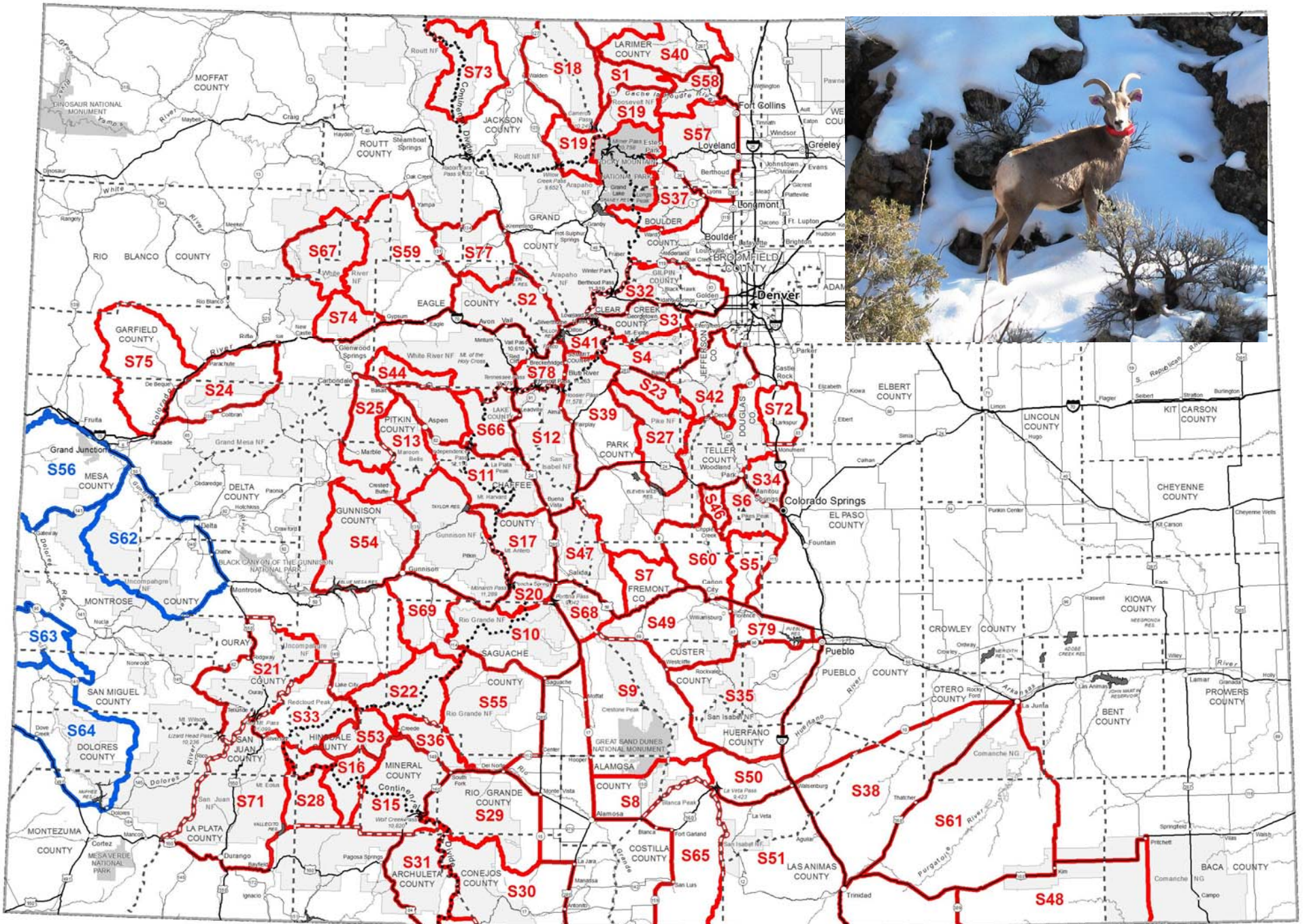
LIVE LIFE  
OUTSIDE

# Rocky Mountain Bighorn Sheep License Recommendations

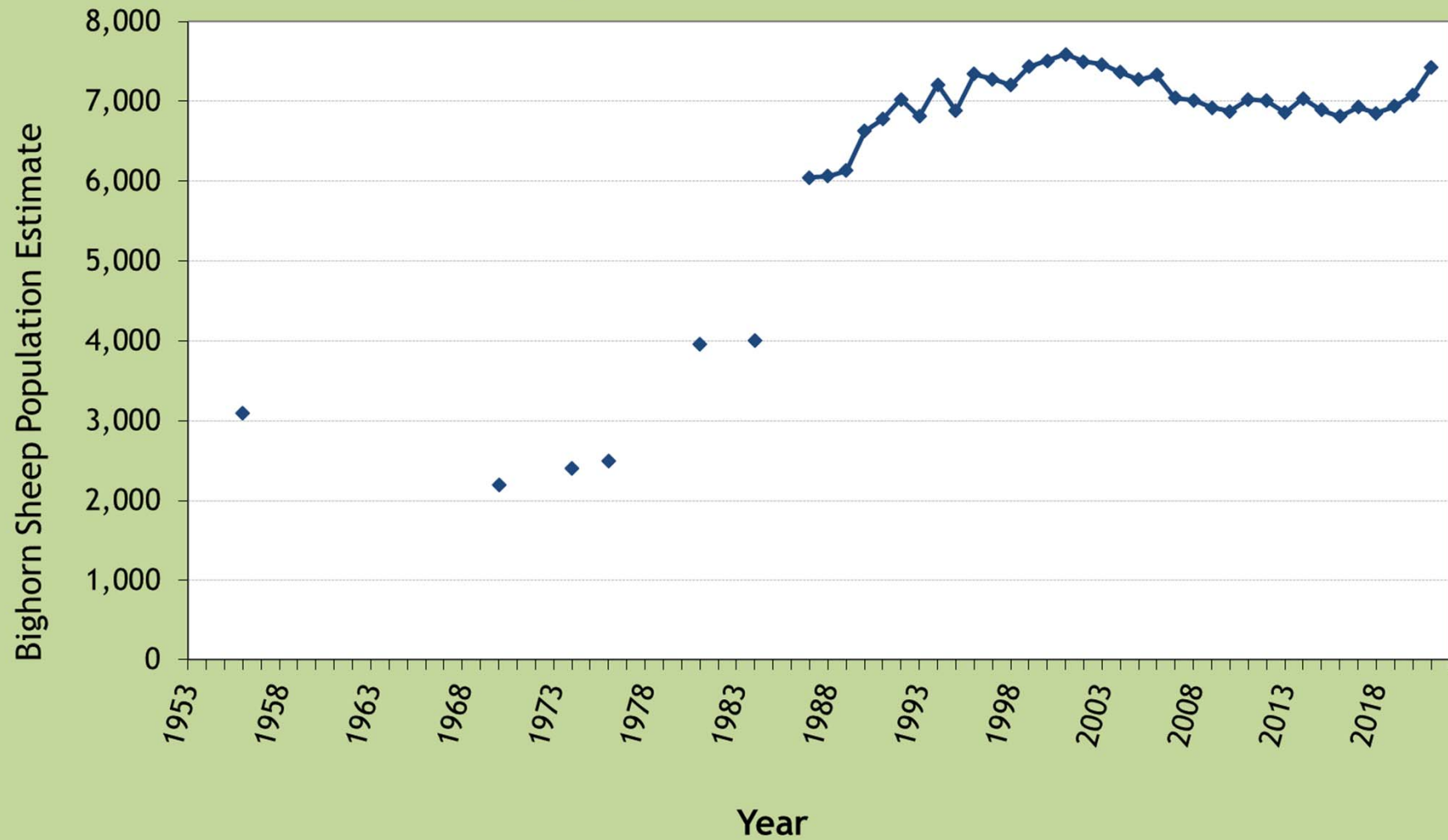
- Recommending an increase of 15 licenses for 2022
- From 315 to 330 licenses statewide
- Ram and either-sex licenses from 227 to 239 ram (+12)
- Ewe licenses from 88 to 91 (+3)



LIVE LIFE  
OUTSIDE



# Colorado Statewide Rocky Mountain Bighorn Sheep Population Estimates



LIVE LIFE  
OUTSIDE

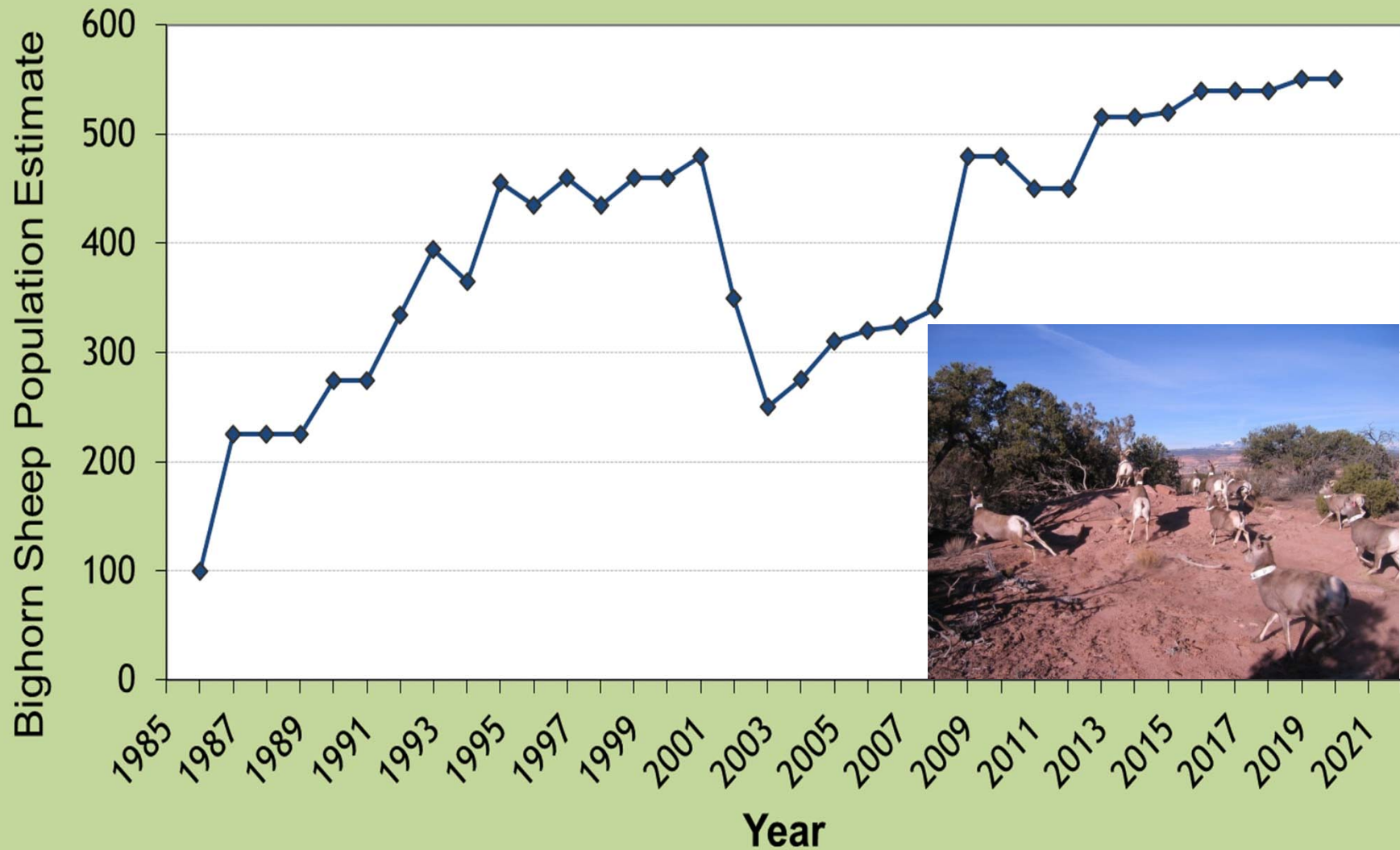
# Desert Bighorn Sheep License Recommendations

- Recommending an increase of 1 ram license for 2022
- 15 ram licenses



LIVE LIFE  
OUTSIDE

# Colorado Statewide Desert Bighorn Sheep Population Estimates



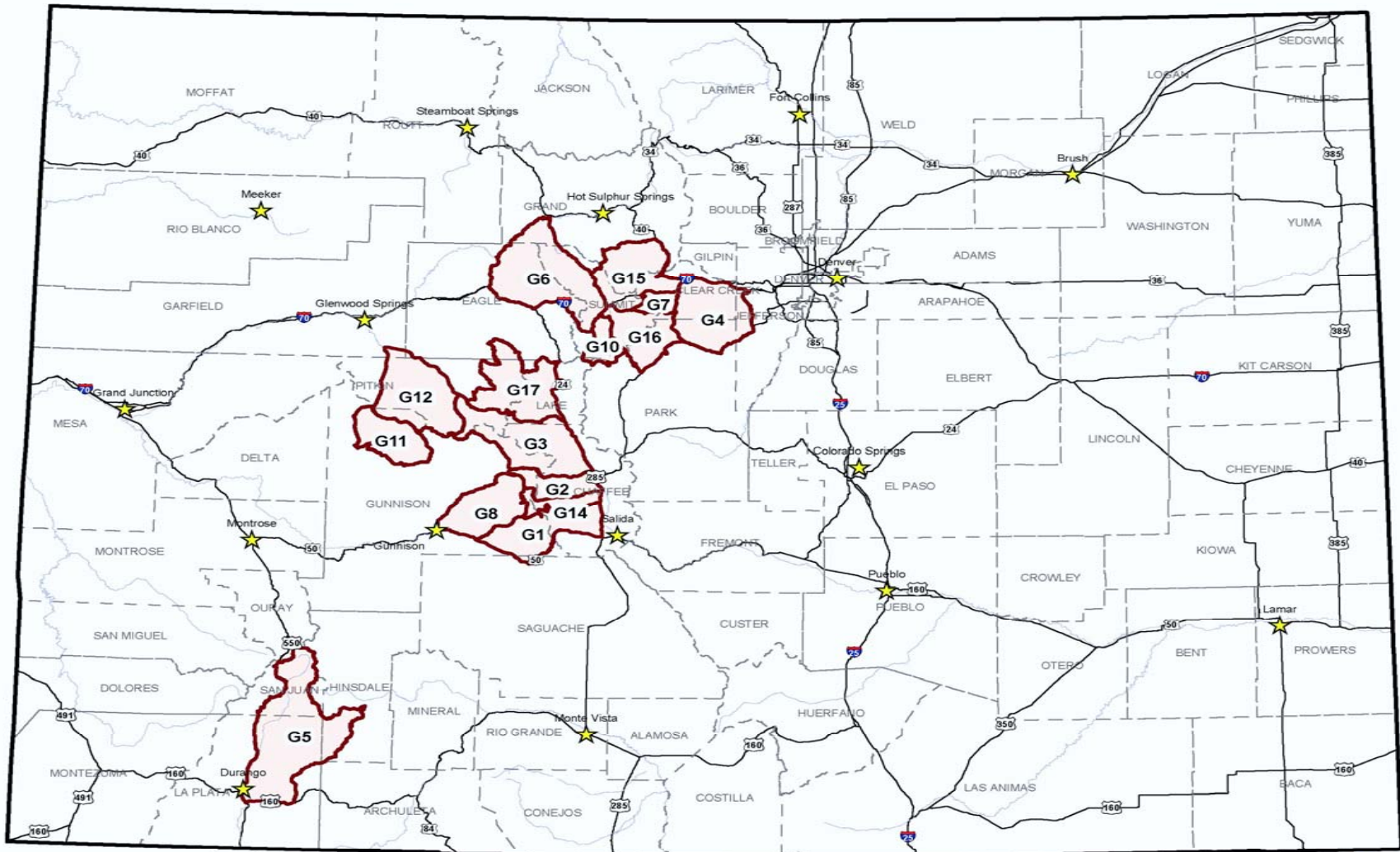
LIVE LIFE  
OUTSIDE

# Mountain Goat License Recommendations

- Recommending an increase of 40 licenses for 2022
- From 234 to 274 total licenses statewide
- Either-sex licenses from 206 to 236 (+30)
- Nanny only licenses from 28 to 38 (+10)



LIVE LIFE  
OUTSIDE



**CPW - Mtn. Goat Game Management Units (GMUs) (hunted GMUs only)**

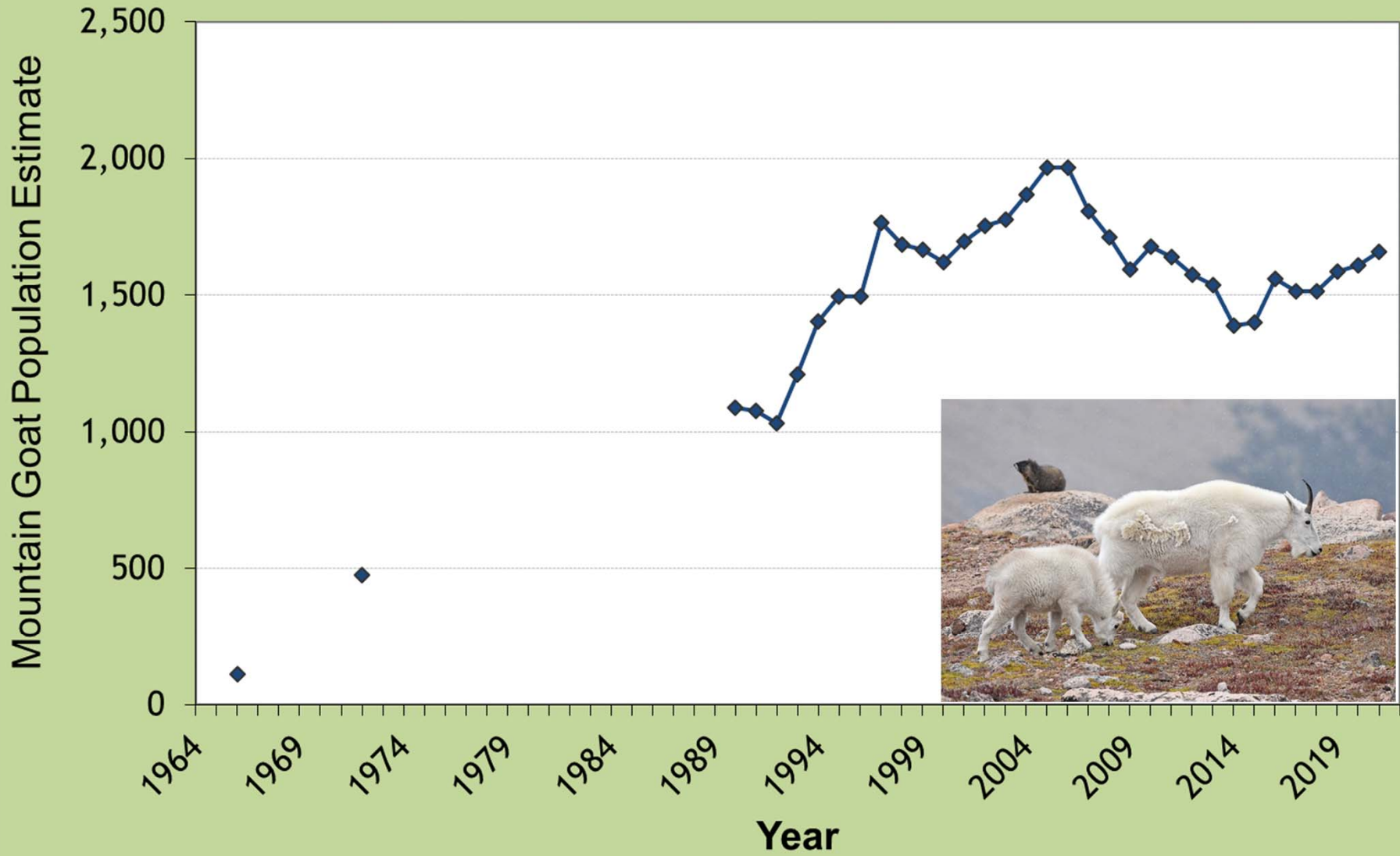
April 2020



**LIVE LIFE  
OUTSIDE**



# Colorado Statewide Mountain Goat Population Estimates



LIVE LIFE  
OUTSIDE