

2022 Black Bear License Recommendations



Parks and Wildlife Commission
May 4-5, 2022
Sterling, CO

Mark Vieira- CPW Carnivore and Furbearer Program Manager

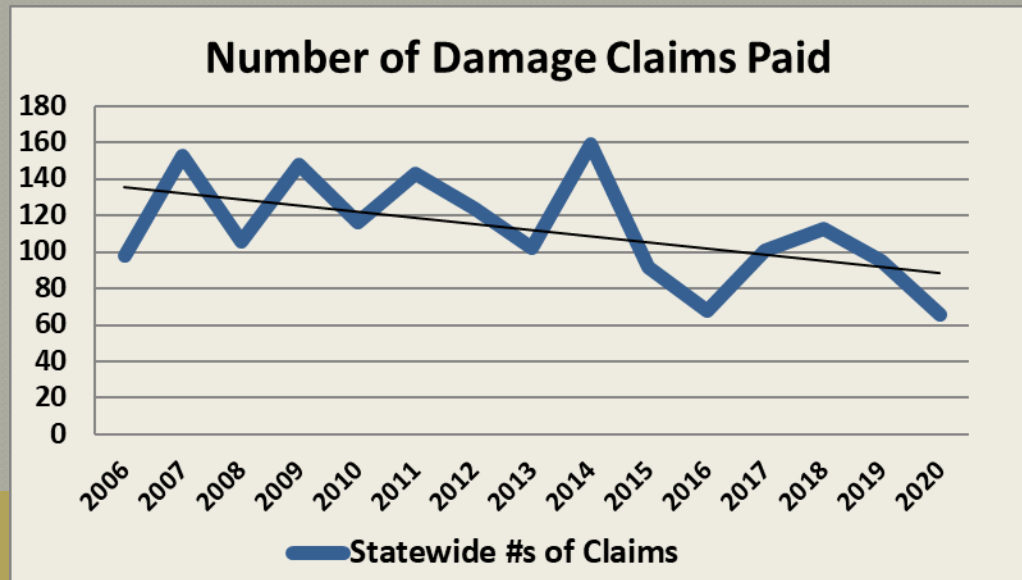


LIVE LIFE
OUTSIDE

Information Supporting Recommendations

- Harvest Composition (Age Classes & Gender)
- Bear Damage Claims
- Human Conflicts and Other Data

Harvest Composition Monitoring Standards			
Age/Gender Class	Decreasing	Stable	Increasing
Adult Male Harvest in All Harvest	< 25%	25-35%	> 35%
Total Female Harvest in All Harvest	> 40%	30-40%	< 30%
Adult Female in Total Female Harvest	> 55%	45-55%	< 45%

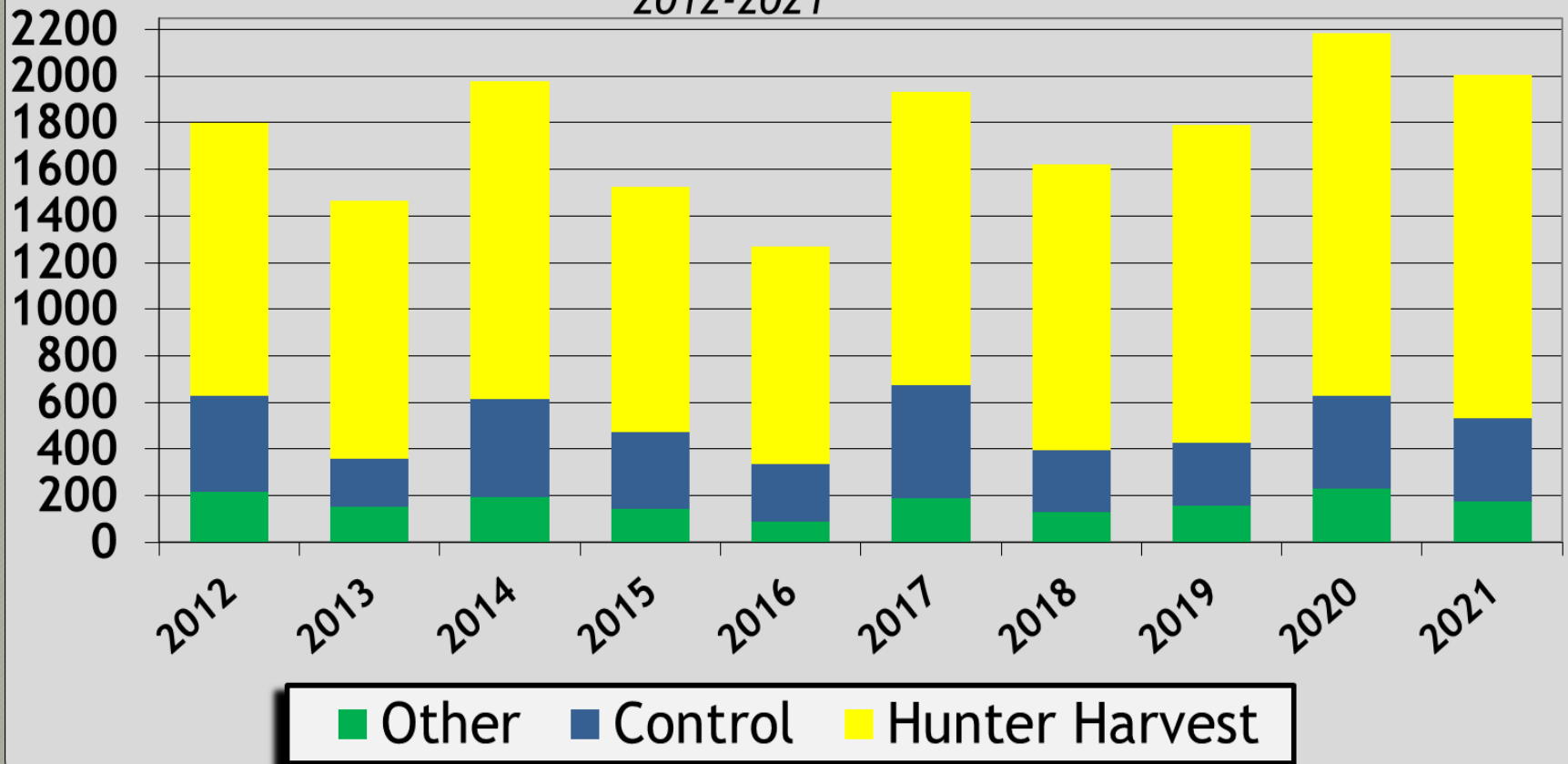


LIVE LIFE OUTSIDE

Bear Mortality by Mortality Type

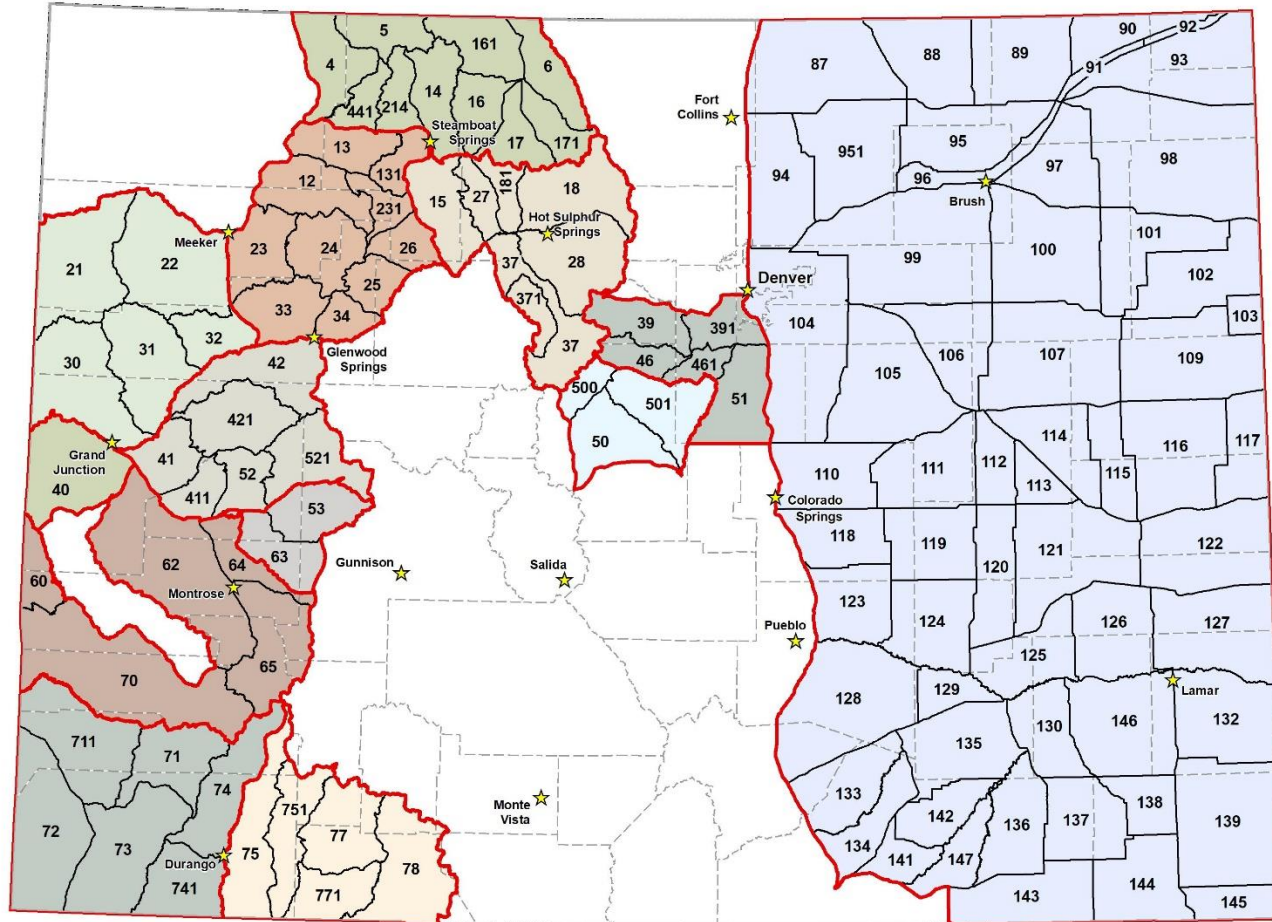
2012-2021

Colorado Bear Mortality by Mortality Type
2012-2021



LIVE LIFE
OUTSIDE

2022 Bear Management License Strategy



**Units with OTC Rifle
Black Bear Licenses 2022**



- ★ CPW offices
- Only limited licenses available
- ▭ Grouped units boundary

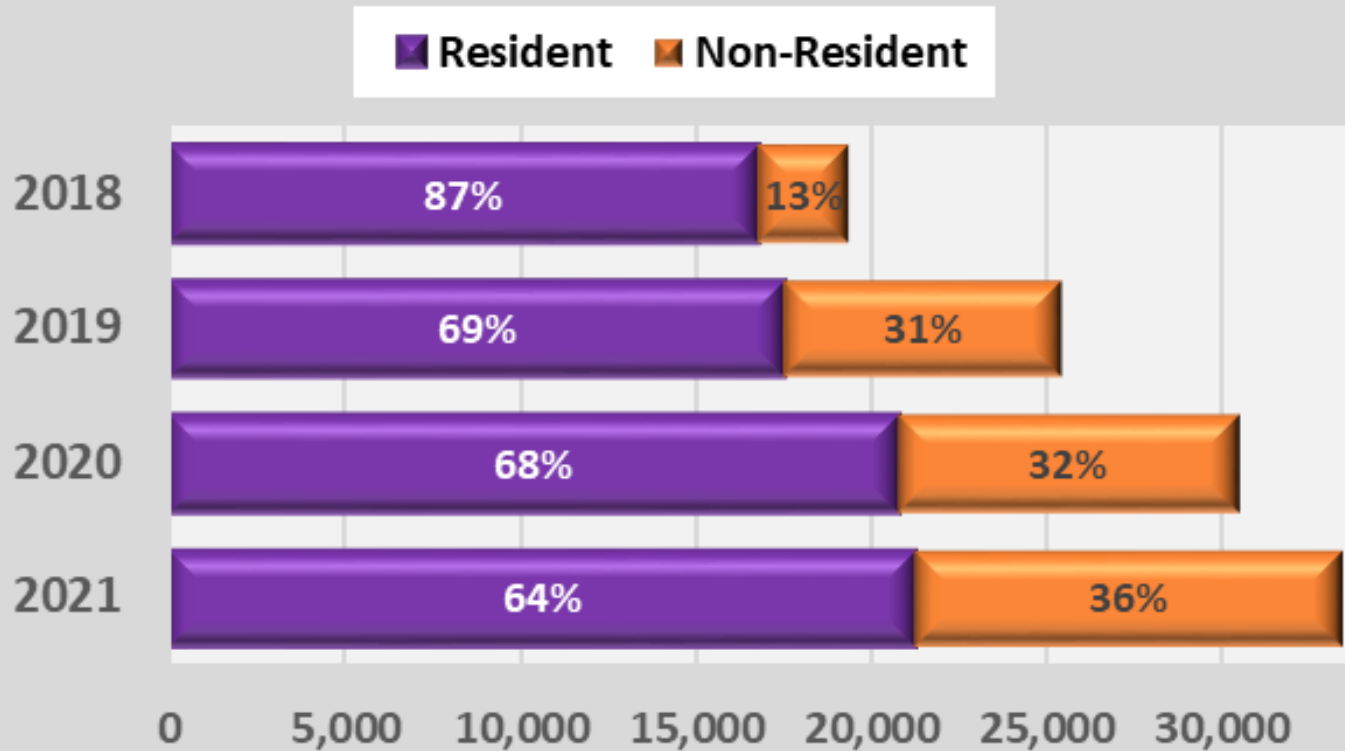
Units shaded the same color are part of the same unit grouping for rifle over-the-counter licenses. See the archery, muzzleloader and rifle tables.



**LIVE LIFE
OUTSIDE**

NR Fee Reduction (2019) and BGSS OTC Opportunities (2020)

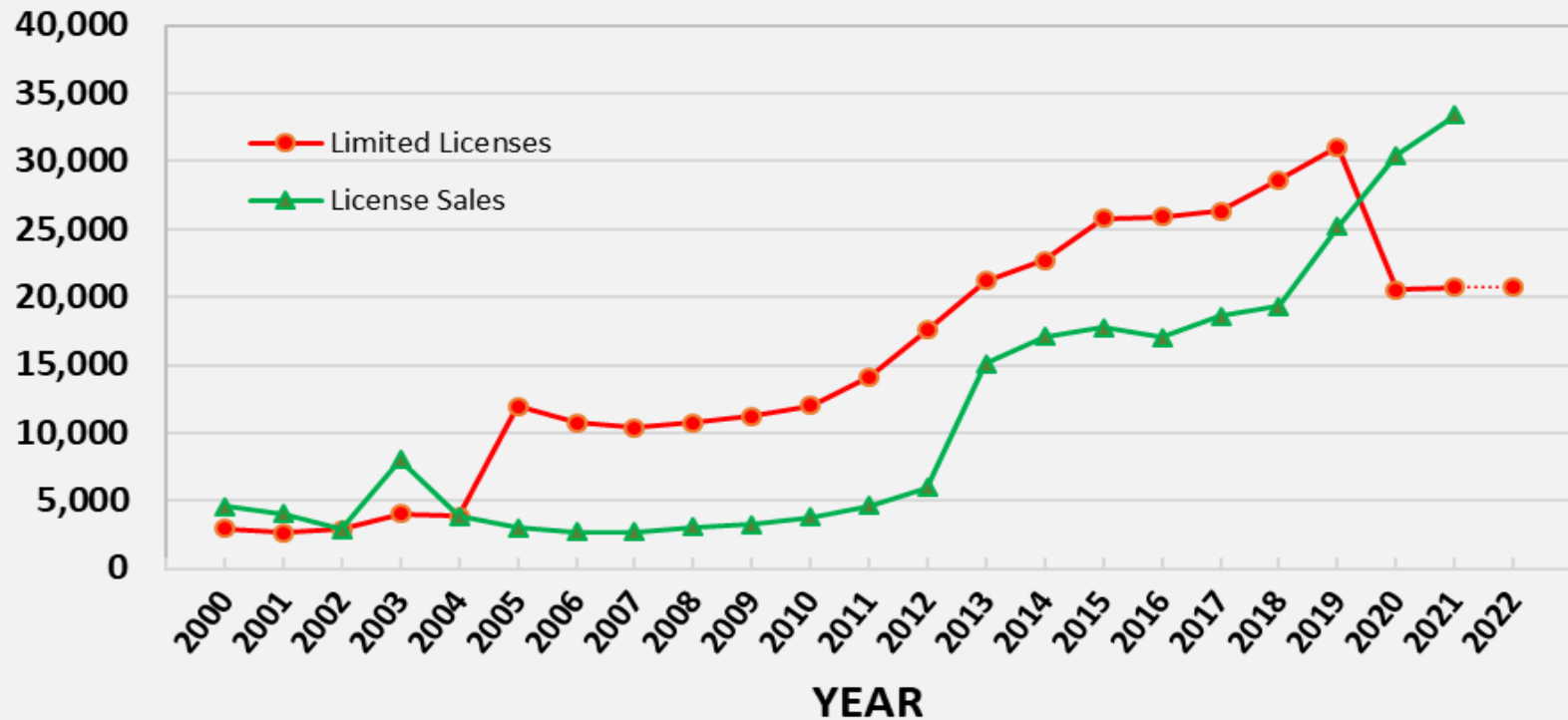
Total Bear License Sales



LIVE LIFE
OUTSIDE

License History

Black Bear Licenses and License Sales by Year



**2022 quota recommendation is 20,700 limited licenses
(no change from 2021)**



LIVE LIFE
OUTSIDE