

Wolf Restoration & Management Plan Public Outreach & Advisory Group Facilitation

Keystone Policy Center

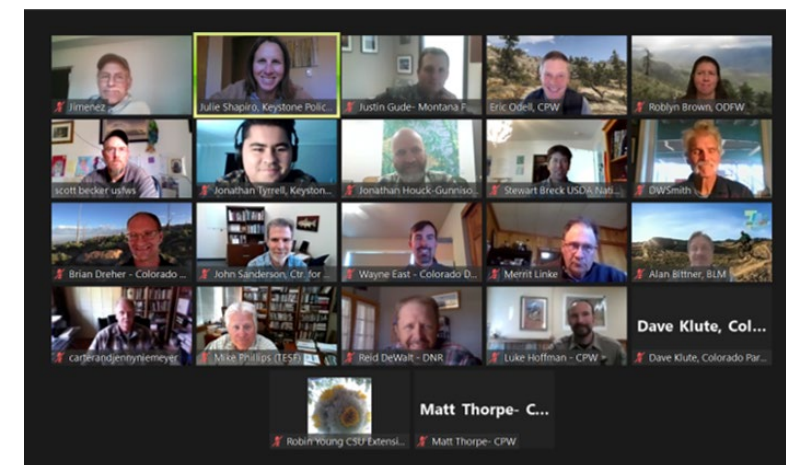
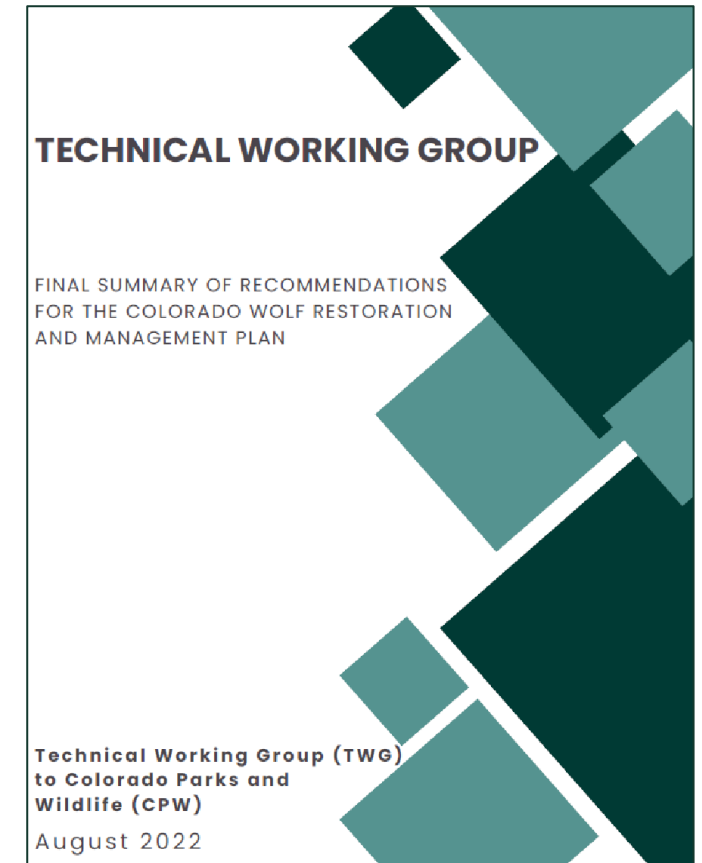
Update to Parks and Wildlife Commission

November 2022

Technical Working Group: Final Summary Report

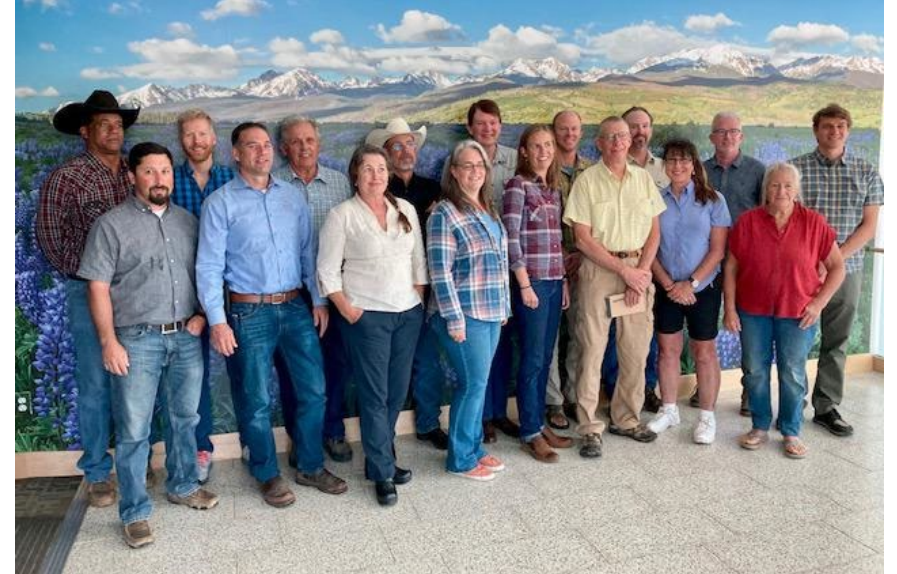
Synthesizes key takeaways from the TWG's reports along with cross-cutting themes.

- **Reports:**
 - Restoration logistics
 - Livestock compensation
 - State recovery metrics and delisting and down-listing thresholds
 - Wolf management considerations
- **Cross-cutting themes**
 - Trust, relationships, expectation setting, transparency, outreach and field presence
 - Biological/ecological and social/economic dimensions
 - Flexibility and adaptation
 - Full array of management tools to minimize, respond to and address impacts of conflicts & to assist affected communities
 - Funding and resources
 - Research and monitoring
 - Inherently controversial and complex topic with no silver bullet
 - Learn and build from other experiences in CO and elsewhere to meet CO's specific needs and context



Stakeholder Advisory Group

- Offers a broad range of perspectives and experience to inform the social implications of wolf restoration and management strategies.
- Members selected by CPW Director in consultation with the Parks and Wildlife Commission Chair, for diversity in demographics, backgrounds, geographic regions, perspectives, and knowledge in order to constitute a vibrant, diverse and inclusive stakeholder voice in the planning process.
- 17 voting members; 3 non-voting.
- Monthly SAG meetings were in person, are open to public observation, and include opportunity for public comment.
- Meeting summaries, schedule, public comment info & information about members and charter are available at <https://www.wolfengagementco.org/>

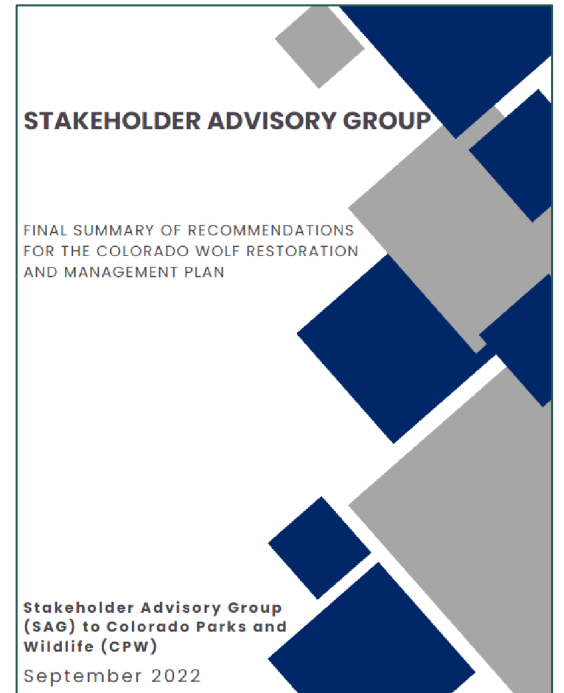


Stakeholder Advisory Group: Final Summary Report

Consensus, civil discussion & understanding
Recognizing real people and perspectives
Early conversations, effective actions & local solutions

Cross-cutting themes:

- Restoration of wolves with thriving ungulate populations, rural communities, and agricultural economies
- Using science-based, adaptive, and impact-based management at the local level
- Leaving wolves wherever they are if they are not causing problems, minimizing conflict, and addressing issues on a case-by-case basis using a variety of management tools
- Critical need for long-term funding as well as outreach and engagement



Stakeholder Advisory Group: Final Summary Report

Per the SAG's charter, consensus recommendations in this report 'will receive priority consideration by CPW.' Accomplishments of the SAG include consensus on the following topics:

- A variety of [restoration logistics recommendations](#) provided by the Technical Working Group.
- [Preventative, nonlethal wolf-livestock conflict minimization](#).
- [Outcomes and principles for livestock compensation](#).
 - The SAG also [developed and voted on eight compensation plan alternatives](#), reaching a high level of support for several of the alternatives regarding compensation ratios and production losses.
- [Impact-based management assumptions](#). The SAG also developed and reached consensus on a variety of elements for a [framework for impact-based management techniques](#) allowed during various phases of wolf management in Colorado.
- A [statement on regulated public hunting of wolves](#) including a recommendation that a decision on this topic **should not** be made in the restoration and management plan to be finalized in 2023.
- [Ungulate management recommendations](#) regarding strategies to manage ungulate populations and hunter opportunities in the context of wolf reintroduction and management.
- [Funding recommendations](#) to support and sustain a successful wolf restoration and management plan.
- [Outreach and education recommendations](#) to increase trust, transparency, and awareness as a component of a successful restoration and management plan.

Public Engagement

Summer 2021: 47 meetings plus online comment

- 16 in-person regional open houses (8 on the Western Slope)
- 17 in-person Western Colorado geographic focus groups
- 2 in-person Tribal consultations
- 10 virtual interest-based focus groups
- 2 virtual statewide town halls
- Online comment form and online open house materials
- Summarized in November 2021 report
- Approximately 3400 participants.

Ongoing:

- Public comments at PWC & SAG meetings
- Online comment at www.wolfengagementco.org

Upcoming:

- Keystone and CPW staff are working on specifics for comment (online and verbal) for the draft plan.



Tribal Consultation Meetings & Tribal & Indigenous Engagement

Summer 2021

- Southern Ute Indian Tribe, Ignacio
- Ute Mountain Ute Tribe, Towaoc
- Tribal & Indigenous focus group

Ongoing 2021-2022

- Updates and outreach to Southern Ute Indian Tribe, Ute Mountain Ute Tribe, and CCIA
- Consultations with Southern Ute Indian Tribe and Ute Mountain Mountain Ute Tribe
- Southern Ute Indian Tribe representation on SAG (does not substitute for gov-to-gov consultation)



Stay Informed

<https://www.wolfengagementco.org/>

- Sign up for the Gray Wolf Reintroduction eNewsletter
- Up-to-date information about public involvement opportunities, advisory groups and Commission discussions on wolf planning
- Provide a written comment
- Link to additional information & educational resources on the CPW website

