

Ranching for Wildlife

Parks and Wildlife Commission-9/8/2022



Jerry Neal, CPW - Kiowa Creek Ranch RFW



LIVE LIFE
OUTSIDE

RFW Program Purpose:

Conserve, Improve and Enhance Wildlife Habitat

More Effectively Implement Wildlife Management Plans and Goals

Unique Public Hunting Access Opportunity

To steward Colorado's wildlife resources to the benefit of the sportspersons and citizens of the State of Colorado in partnership with private landowners and producers of the State towards the above outcomes.



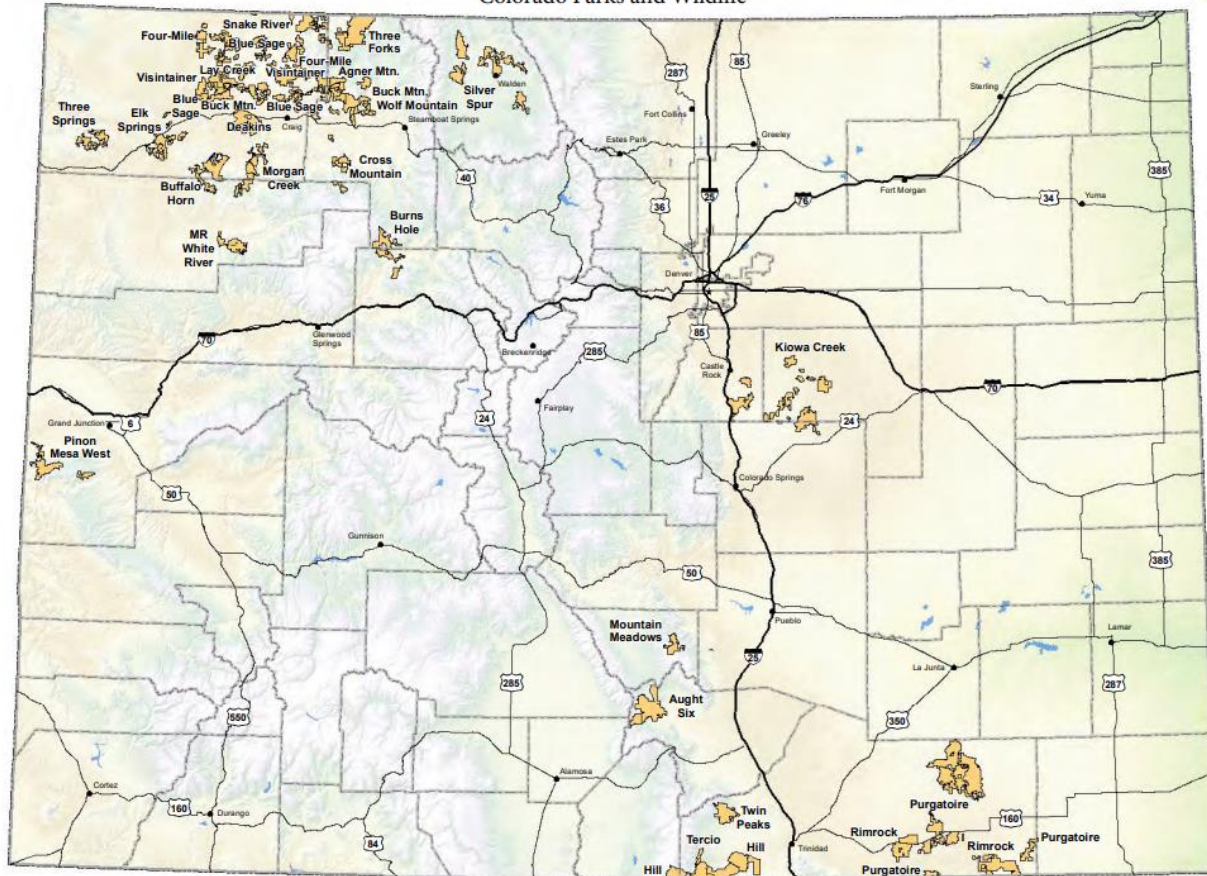
LIVE LIFE
OUTSIDE

RFW Program Delivery

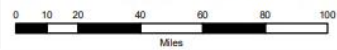
- **Minimum 10,000 contiguous acres**
- **Ranches range in size from 11,000 acres to 156,000 acres**
- **CPW delivers this effort through a collaboration of local field staff, biologists and program coordinator with support from GIS, Habitat Coordinators, Terrestrial Program Data Team and Hunter Outreach**
- **Public licenses are available via the limited license drawing**
- **Ranches deliver annual reports on hunter harvest, effort and habitat projects**
- **On-site ranch reviews happen every 5 years**
- **All RFW licensed public hunters are contacted and surveyed through the annual Big Game Survey**

Ranching for Wildlife(RFW) Program Locations

Colorado Parks and Wildlife



Information depicted on this map is for reference purposes only and is compiled from best available sources. Reasonable efforts have been made to ensure the accuracy of this map however property boundaries may not be current or correct. To ensure that you have the most accurate property boundary information please contact the ranch manager.



Updated 7/26/2022

Program Highlights: 2022



- **980,000 Acres Enrolled**
- **2,666 total public licenses for Elk, Deer, Pronghorn, Moose, Bear, Bighorn Sheep and Turkey**
- **5,780 total program licenses**
- **31 Special Hunt Opportunities for Novice, Veterans, Youth on RFW Ranches**
- **Conservation Easements on more than 240,000 acres**
- **Active Habitat Efforts on ALL Ranches**

Habitat Conservation, Protection and Enhancement



SAMPLE: 2021 Habitat Efforts:

- **21 miles of fences retrofitted or removed for wildlife.**
- **~\$250,000 spent on herbicide/invasive management**
- **350,000 acres under reduced livestock stocking rates and over 60,000 acres of deferred grazing.**
- **2,200 acres of forestry/shrub management**
- **100 miles of riparian enhancement/protection**
- **135 wells/ponds built or cleaned**

Cooperation in Managing Wildlife

- Elk Captures
- VIT- calf/fawn captures
- Collar retrievals
- Mountain Lion Studies
- Lek counts for Columbian Sharp-tails, Greater and Gunnison Sage Grouse
- Beaver and Bear releases
- Big Game Population Efforts
- Law Enforcement
- Strategic habitat efforts for sensitive species



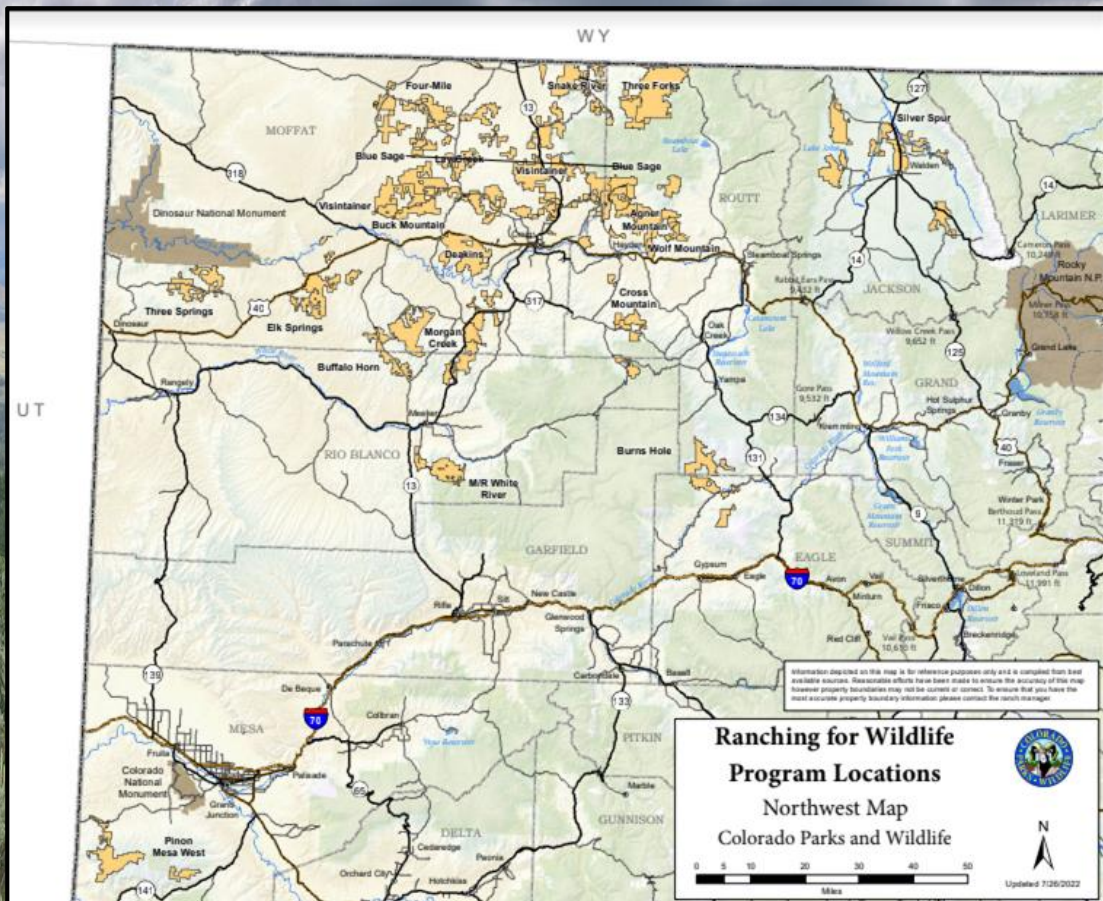
- **Average Either-Sex Elk Success Rate: 70.6%**
- **Average Public Satisfaction of 1.91 for Elk**
- **Youth, Novice and Veteran Hunts on 24 Ranches**
- **Over 83 unique, public seasons**
- **Many First and Last Hunts**
- **0-26 Preference Points to draw**
- **Guided hunts, on-site camping, lodging, game retrieval provided by some ranches**

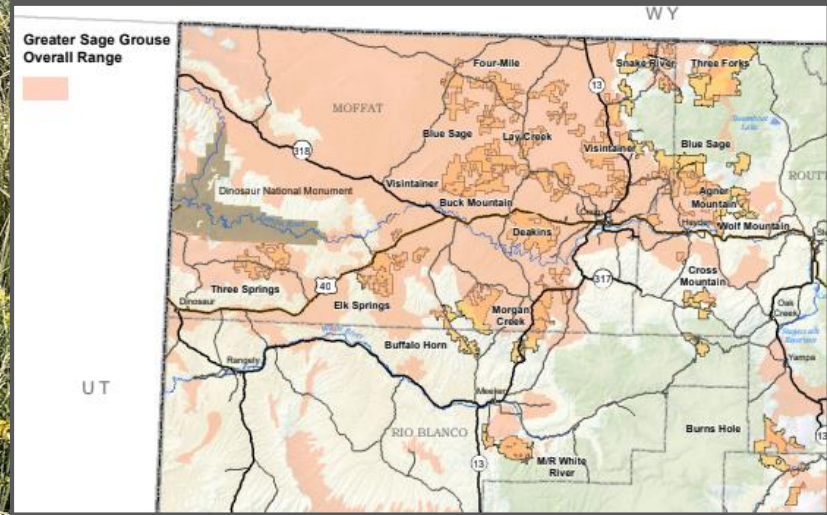
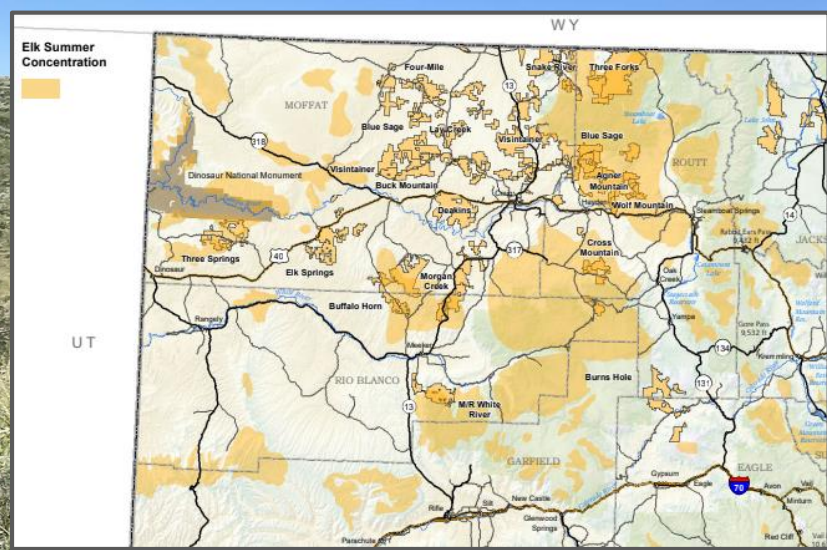
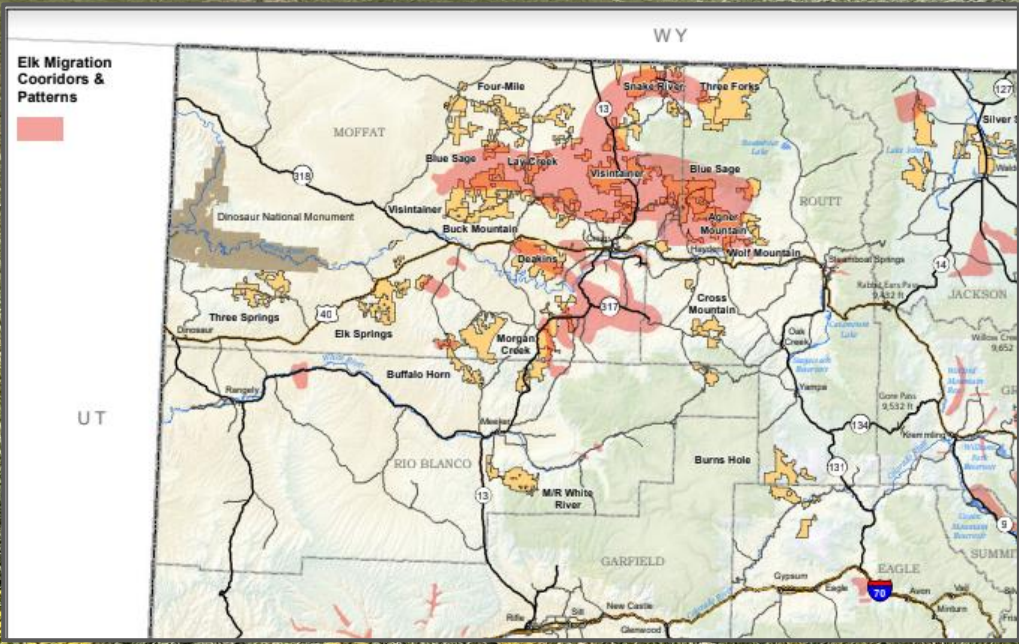


Unique Public Access Opportunity

Area 6 Contribution to the RFW Program

- 13 Ranches, with 2 additional having acreage in Area 6.
- 2022 Licenses -1,823 public licenses & 2,148 private = 3,971 total licenses for Area 6
- Habitat Focuses include: Essential wildlife corridors protection and enhancement, brush treatments, forestry projects, invasive weed management, wet-meadow restoration, water development
- 8 Ranches with Conservation Easements
- Contributions to Research: Elk monitoring, lek counts
- 13 Outreach Hunts
- \$11,942,000 annual hunting expenditures and 312 full-time jobs in Moffat County alone (2019 SCORP)





Ray Aberle, CPW - M/R Whiteriver Ranch, RFW

Active NW ranches (10 ranches for 12 RFW Hunter Outreach Hunts):

4 mile RFW- Youth, 3 pronghorn and 3 deer

Buck Mnt RFW- Youth, 3 deer, 3 pronghorn

Snake River RFW- Novice MEN, 3 deer, 3 pronghorn and fly-fishing

Lay Creek RFW- 6 Novice women, 6 deer

Three Forks Ranch RFW I & II- Youth, 10 cow elk

Visintainer RFW - Youth, 2 deer, 2 pronghorn

Morgan Creek RFW- Youth, 8 cow elk

Deakins RFW- Novice men, 6 doe deer

Deakins RFW II- Youth, 6 doe deer

Wolf Mnt RFW - Novice women, 6 cow elk

Morgan Creek II RFW- Novice women, 10 buck deer management

Blue Sage RFW- Novice Women, 6 cow elk



Goal: The participant receives a safe, ethical, and educational introduction to hunting and leaves with the confidence to try hunting again and/or a better understanding and appreciation of hunting even if they decide not to hunt again in the future.

NW Hunter Outreach Retention Statistics

NW Hunter Outreach Big Game Retention (2017- 2021 Participants)

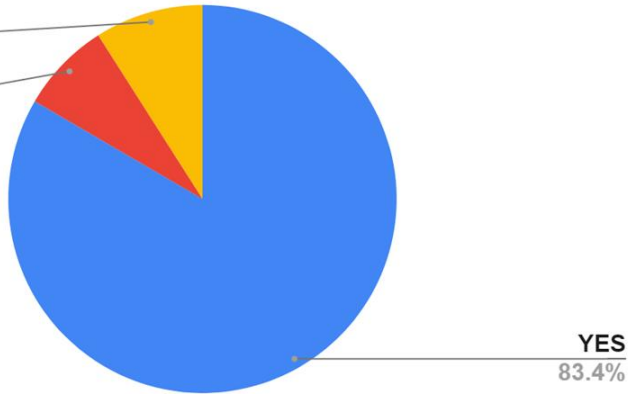
Women, Men, Disabled Veterans, & Youth (277 Total)

Not in 2021

9.0%

Never

7.6%



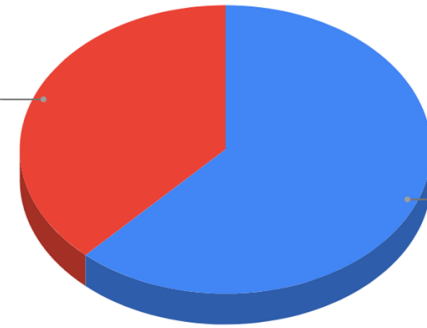
NW Hunter Outreach 2017-2021 Participant Draw 2022 Results

No

38.1%

Yes

61.9%



What Type of Tags 2017-2020 NW Hunter Outreach Participants Bought in 2021

Small Game Co...

8.4%

Waterfowl

4.5%

Park Pass

2.5%

Extra Rod Stamp

5.6%

Fishing

9.8%

Bear

3.6%

Turkey

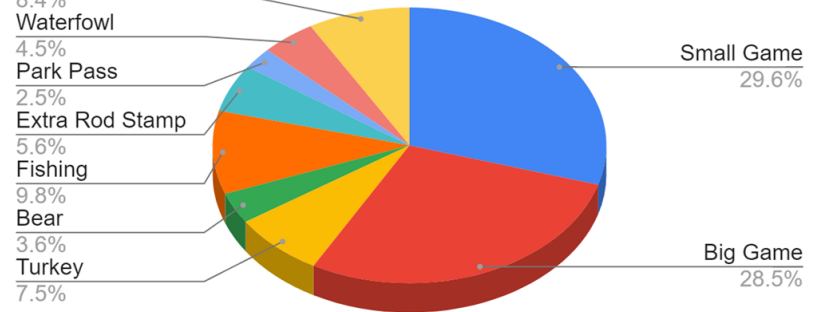
7.5%

Small Game

29.6%

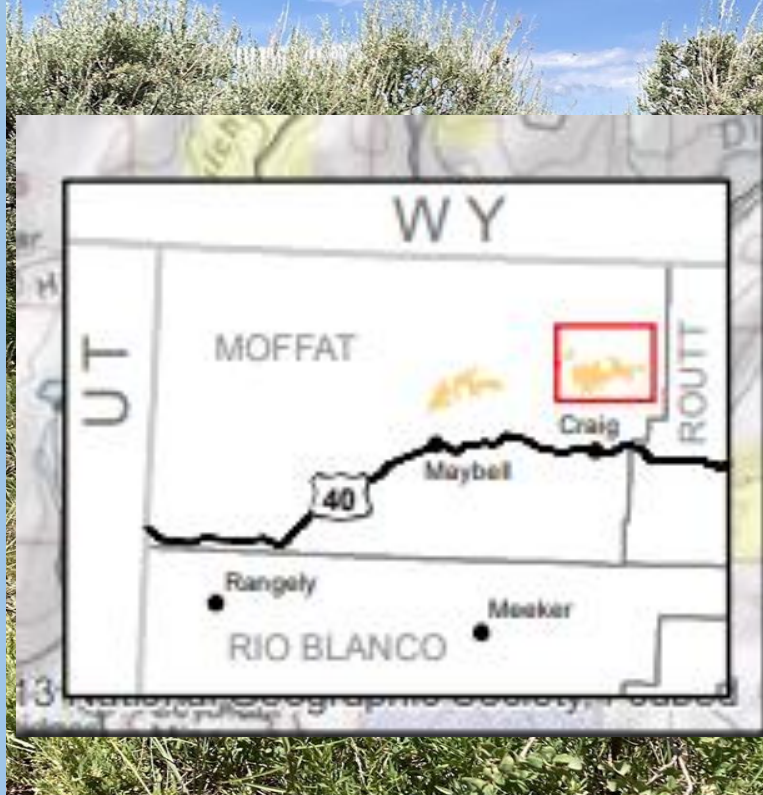
Big Game

28.5%



Visintainer Ranch Specifics:

- 50,070 acres enrolled.
- Primary elk migration corridor, essential greater sage-grouse habitat
- 223 Public Hunters
- 17 unique seasons
- Brush Management on Little Buck Mountain
- Zeedyke-Mesic Restoration (135 structures and 1.5 miles)
- Cheatgrass Management Trial (3,700 acres)
- Grazing Management
- Water Development



Notes from Public Hunters:

- *Looking forward to collecting points to hunt on Visintainer again.*
- *I am very happy with my experience at Visintainer Ranch.*
- *The Visintainer crew were helpful and communicative. It was a fun and good hunt.*
- *The ranch is very well managed and this was a great hunting.*



LIVE LIFE
OUTSIDE

