

Bighorn Sheep and Mountain Goat License Recommendations

Andy Holland - Big Game Manager
Colorado Parks and Wildlife



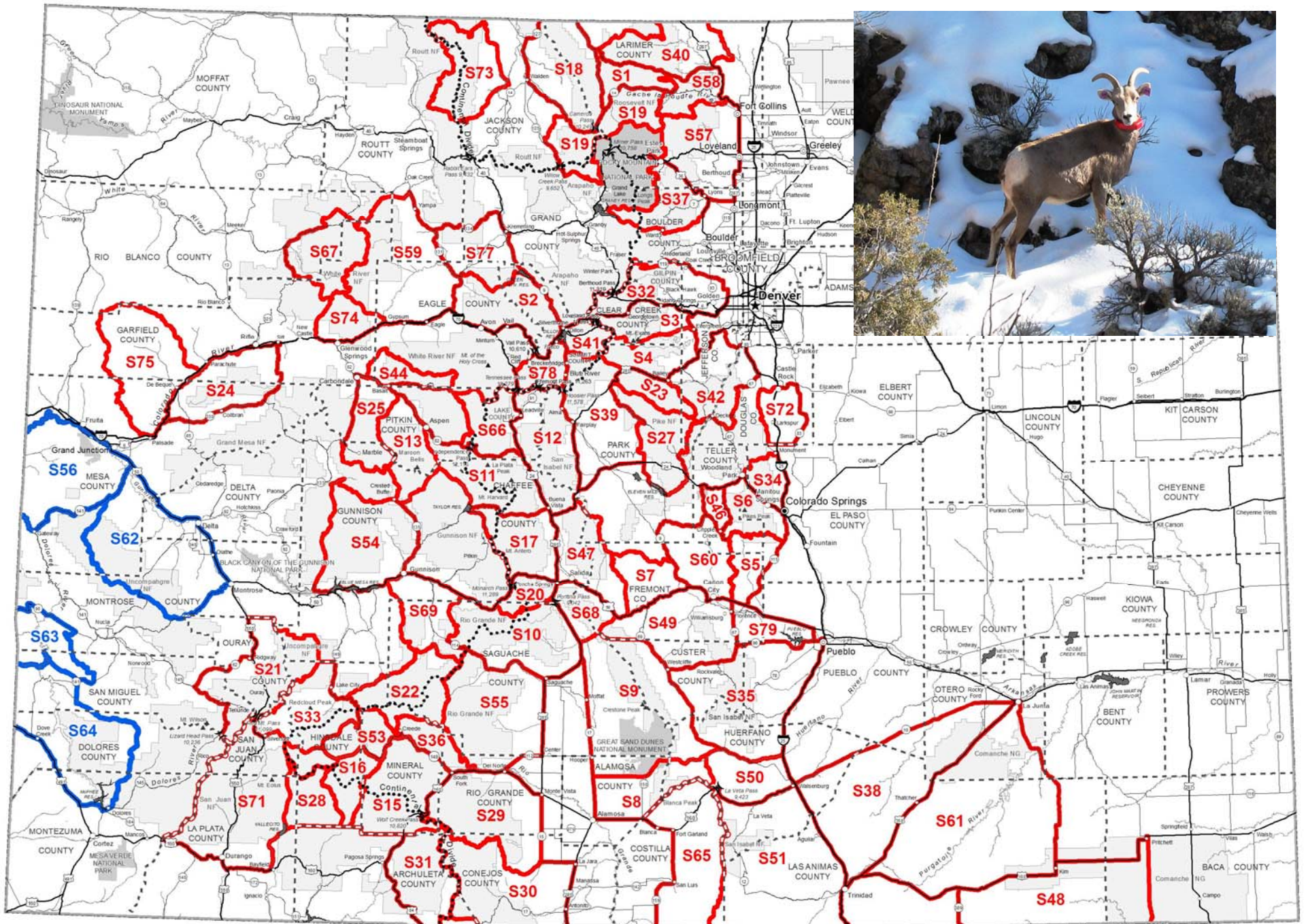
LIVE LIFE
OUTSIDE

Rocky Mountain Bighorn Sheep License Recommendations

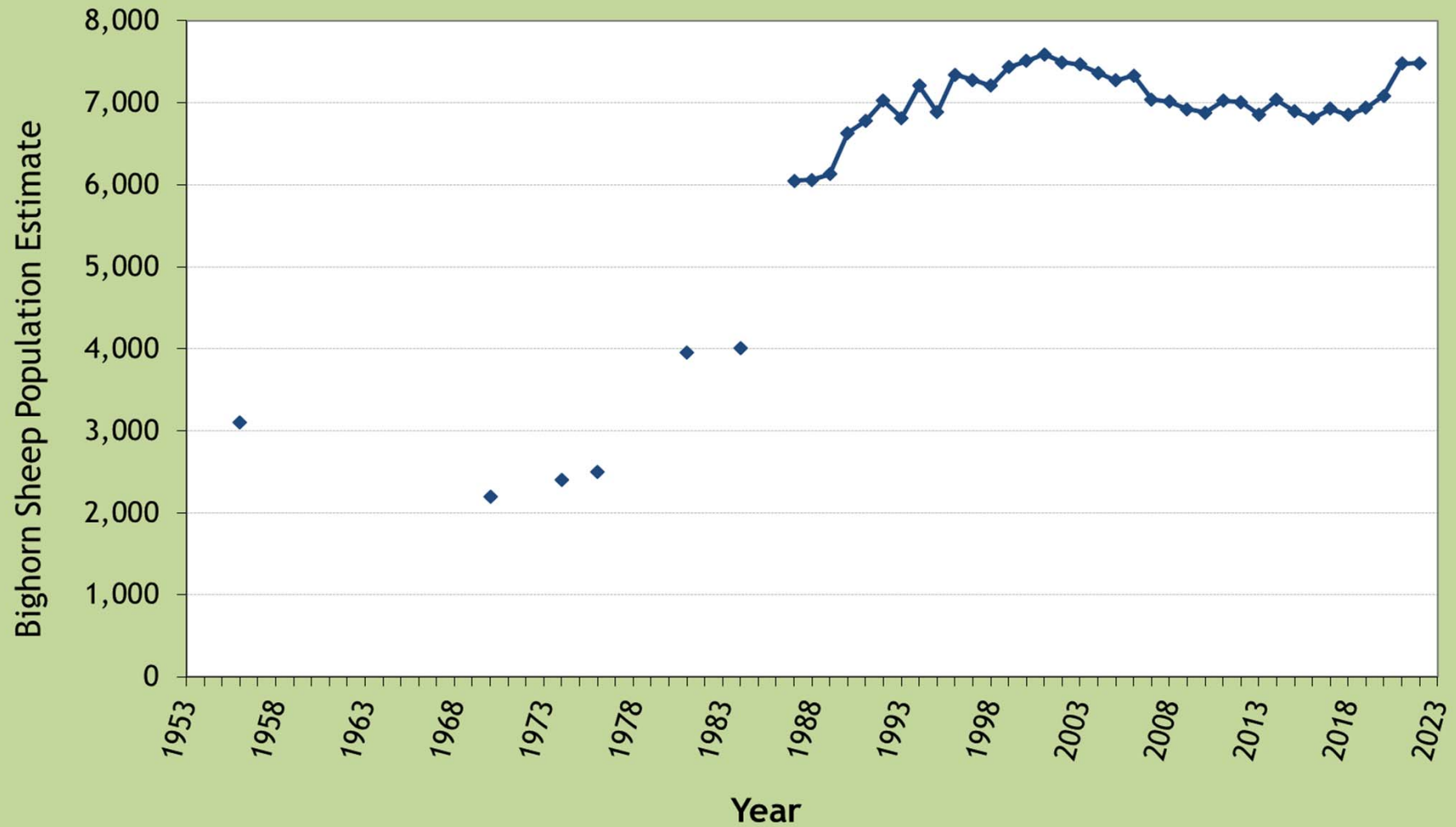
- Recommending an increase of 1 license for 2023
- From 330 to 331 licenses statewide
- Ram and either-sex licenses recommendations are the same at 239
- Ewe licenses from 91 to 92 (+1)



LIVE LIFE
OUTSIDE



Colorado Statewide Rocky Mountain Bighorn Sheep Population Estimates



LIVE LIFE
OUTSIDE

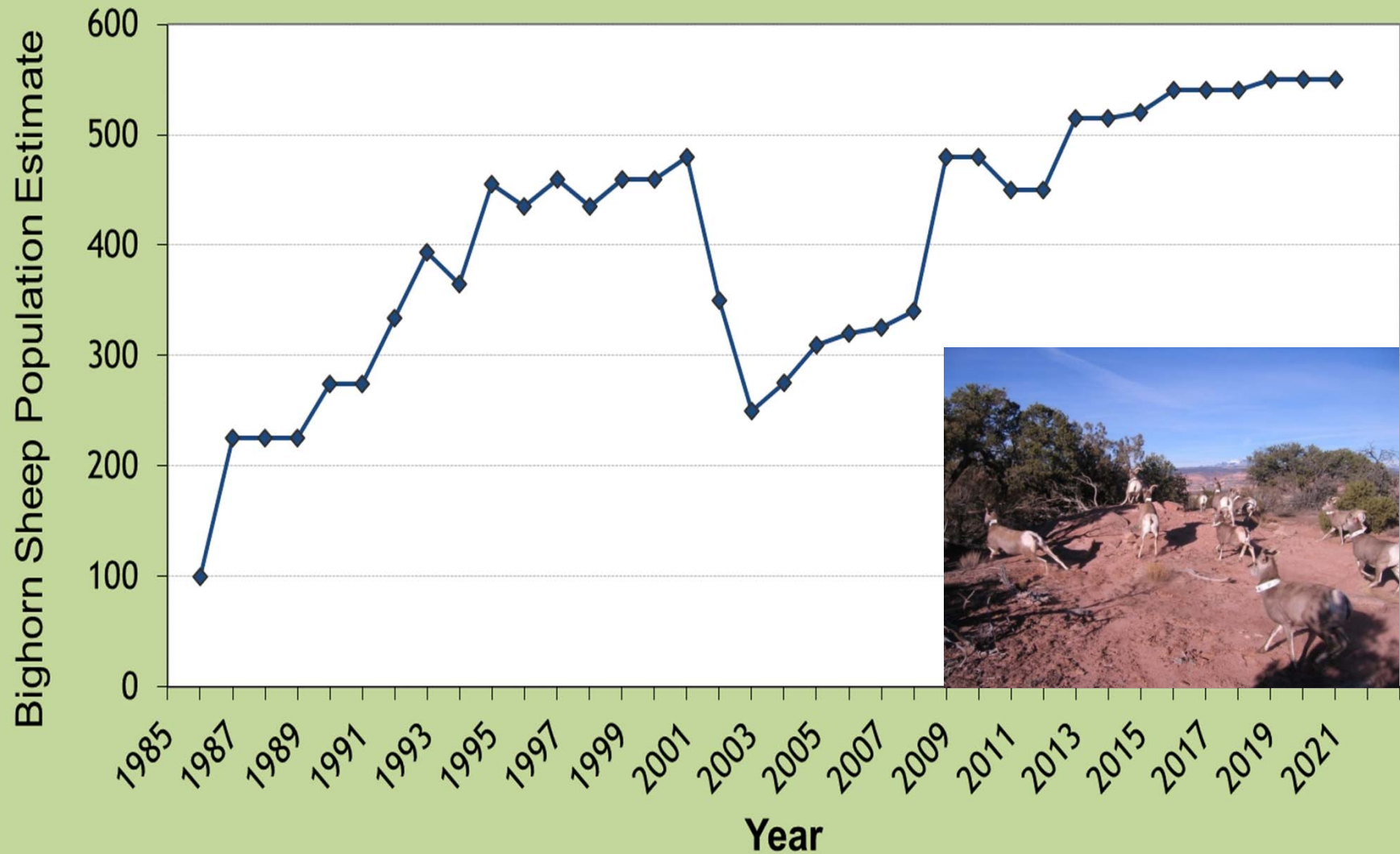
Desert Bighorn Sheep License Recommendations

- Recommending same number of ram licenses for 2023
- 15 ram licenses



LIVE LIFE
OUTSIDE

Colorado Statewide Desert Bighorn Sheep Population Estimates



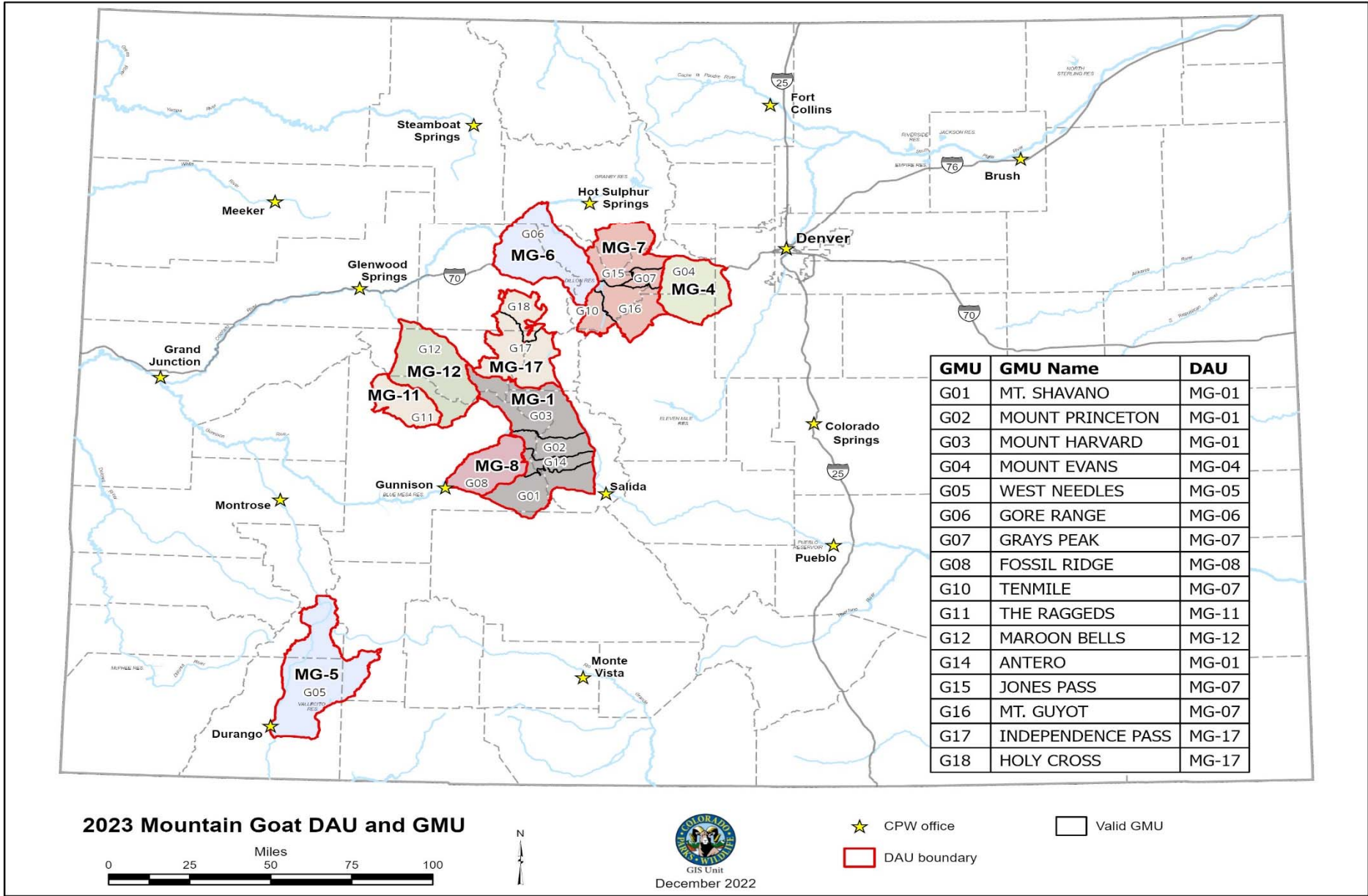
LIVE LIFE
OUTSIDE

Mountain Goat License Recommendations

- Recommending an increase of 6 licenses for 2023
- From 274 to 280 total licenses statewide
- Either-sex licenses from 236 to 237 (+1)
- Nanny only licenses from 38 to 43 (+5)

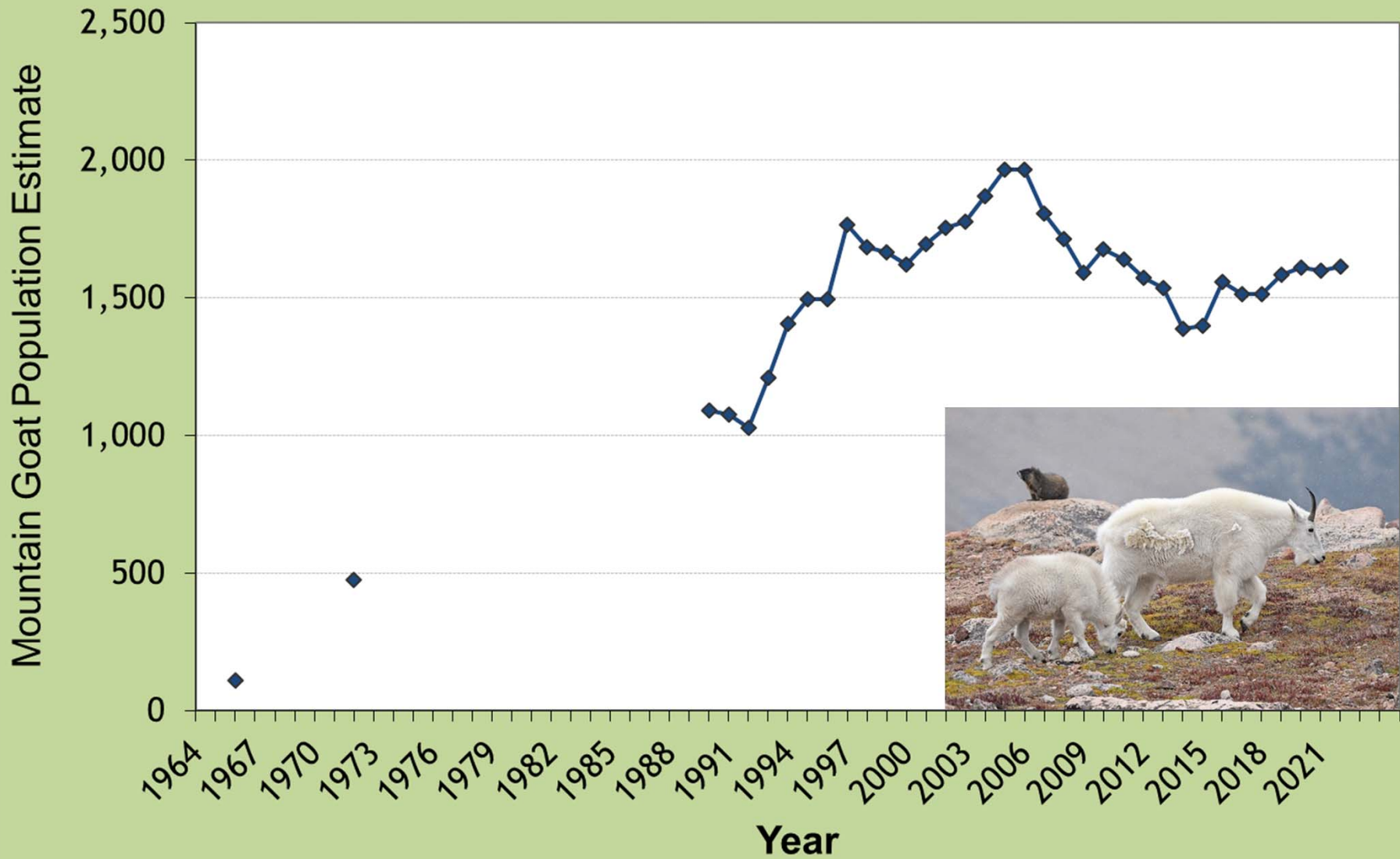


LIVE LIFE
OUTSIDE



GMU	GMU Name	DAU
G01	MT. SHAVANO	MG-01
G02	MOUNT PRINCETON	MG-01
G03	MOUNT HARVARD	MG-01
G04	MOUNT EVANS	MG-04
G05	WEST NEEDLES	MG-05
G06	GORE RANGE	MG-06
G07	GRAYS PEAK	MG-07
G08	FOSSIL RIDGE	MG-08
G10	TENMILE	MG-07
G11	THE RAGGEDS	MG-11
G12	MAROON BELLS	MG-12
G14	ANTERO	MG-01
G15	JONES PASS	MG-07
G16	MT. GUYOT	MG-07
G17	INDEPENDENCE PASS	MG-17
G18	HOLY CROSS	MG-17

Colorado Statewide Mountain Goat Population Estimates



LIVE LIFE
OUTSIDE

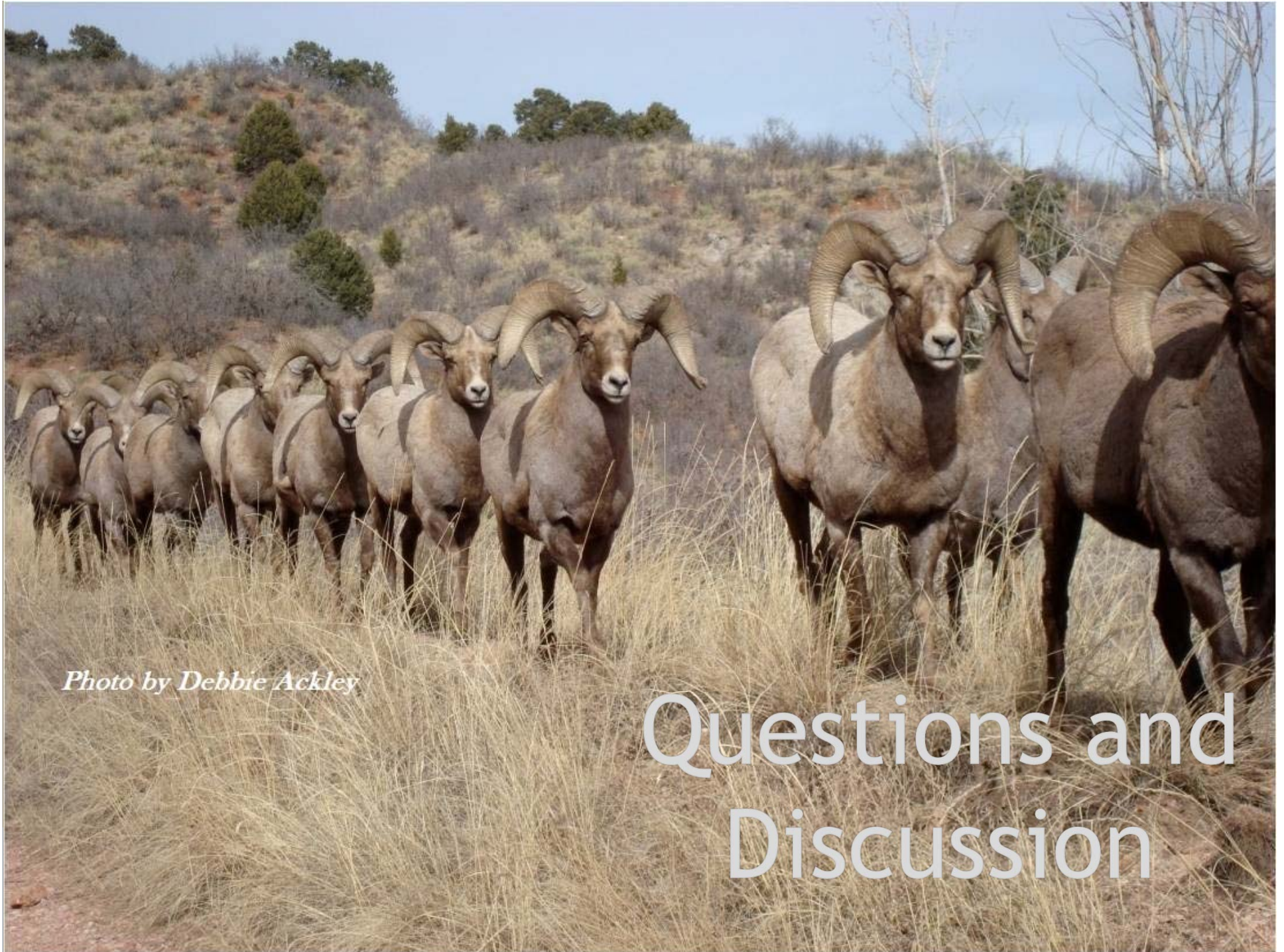


Photo by Debbie Ackley

Questions and Discussion