

West Slope Mountain Lion Plan and Density Monitoring Update



Mark Vieira

CPW Carnivore and Furbearer Program Manager

January 2023 PWC Meeting- Colorado Springs



LIVE LIFE
OUTSIDE

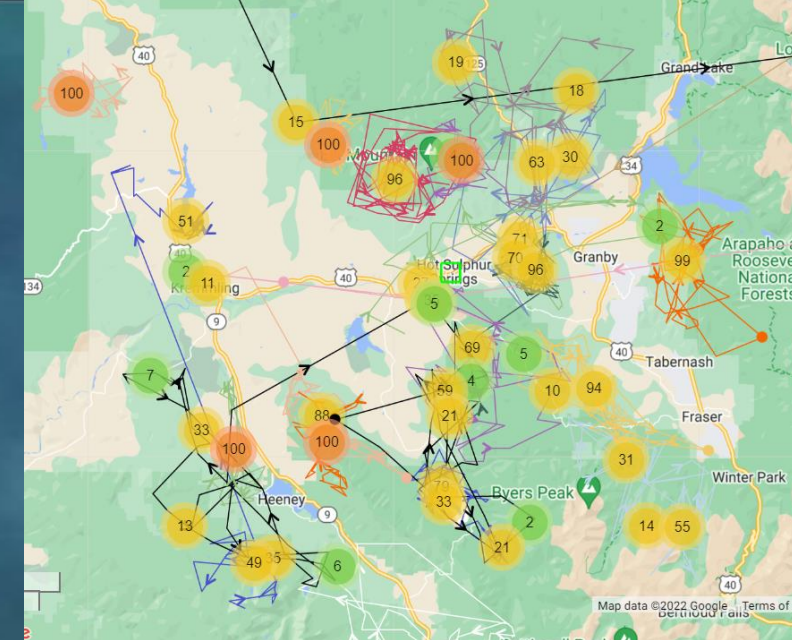
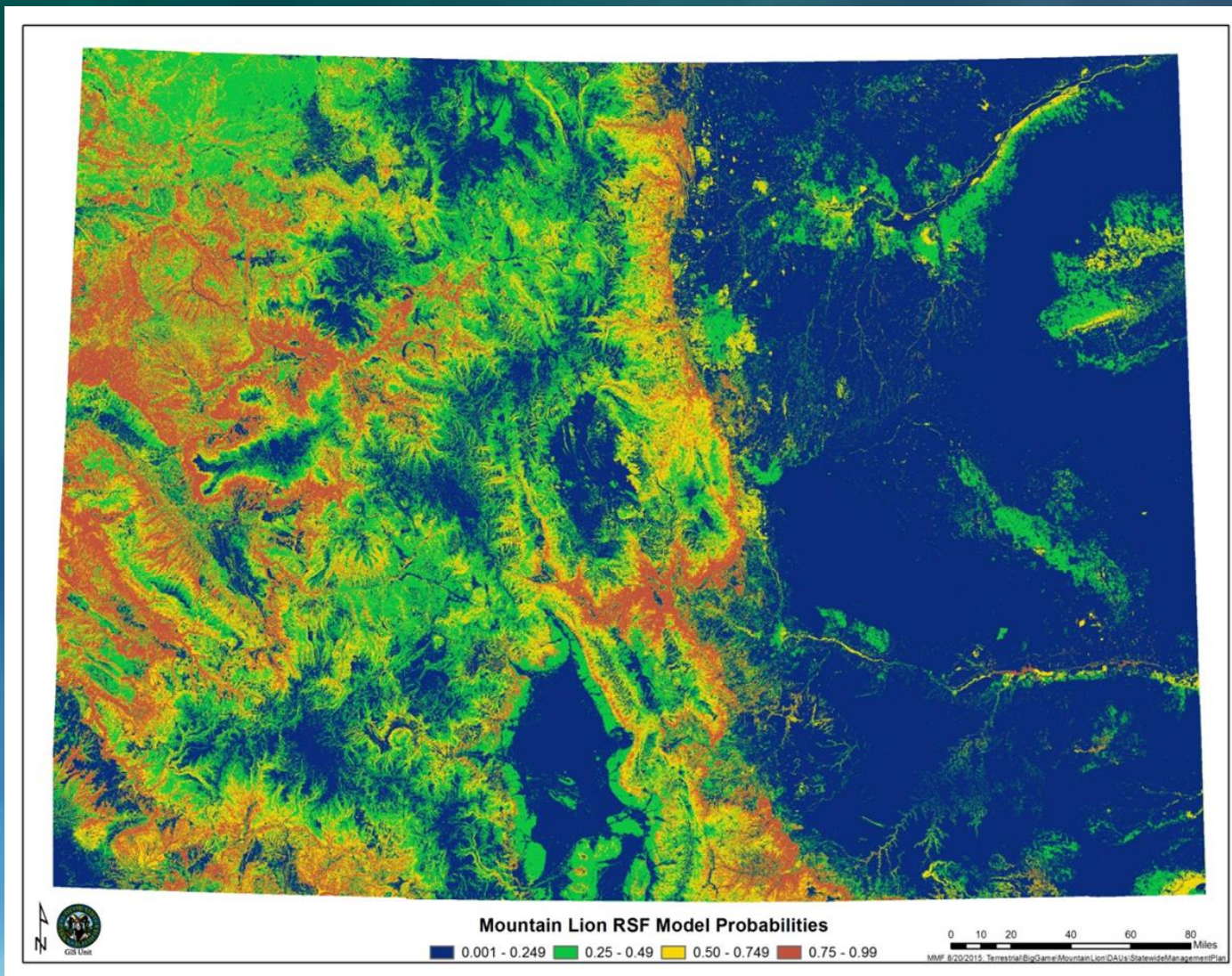
West Slope Mountain Lion Plan

- Larger Scale
- ‘Stable’ population objective
- Two management thresholds applied to entire West Slope at Regional scale
- Lion Density Monitoring



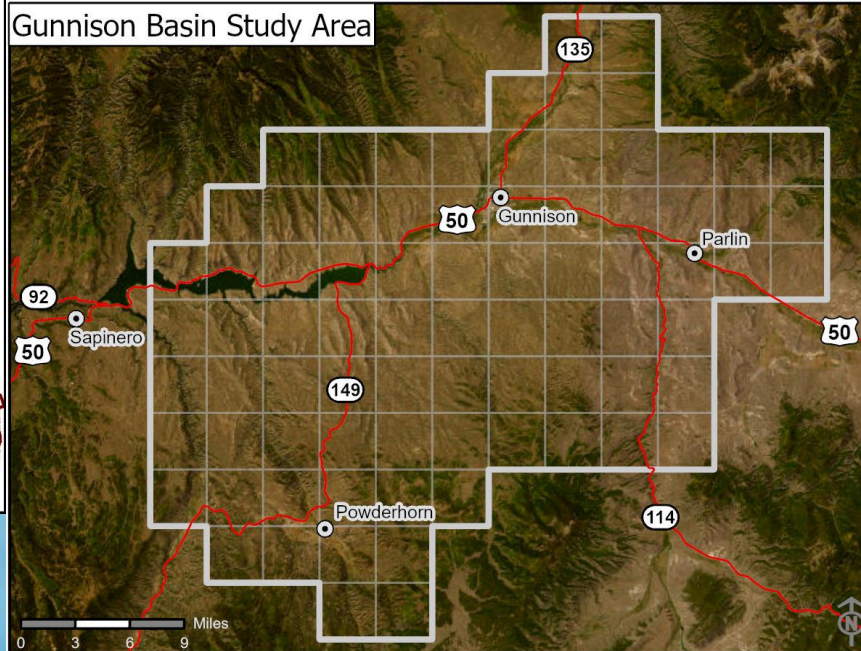
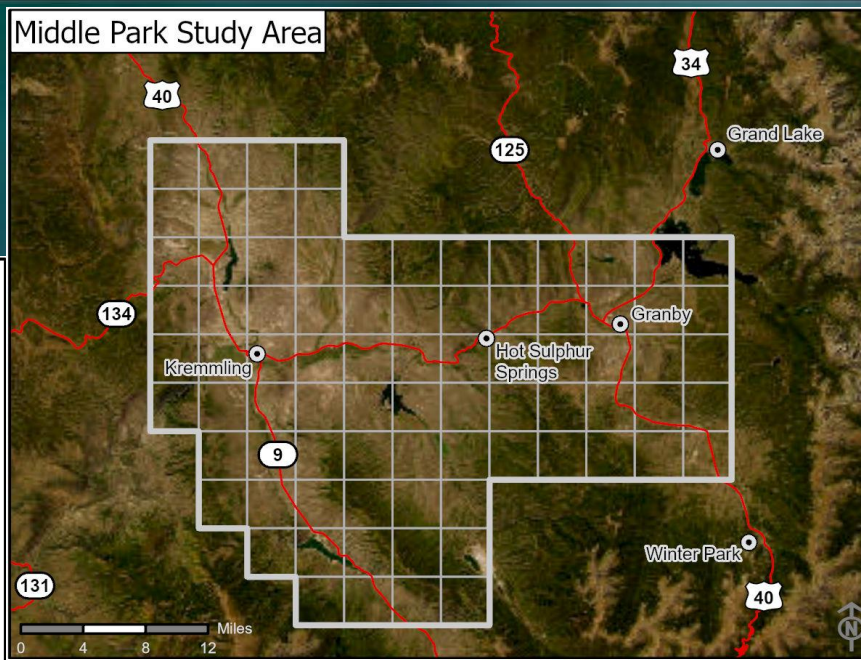
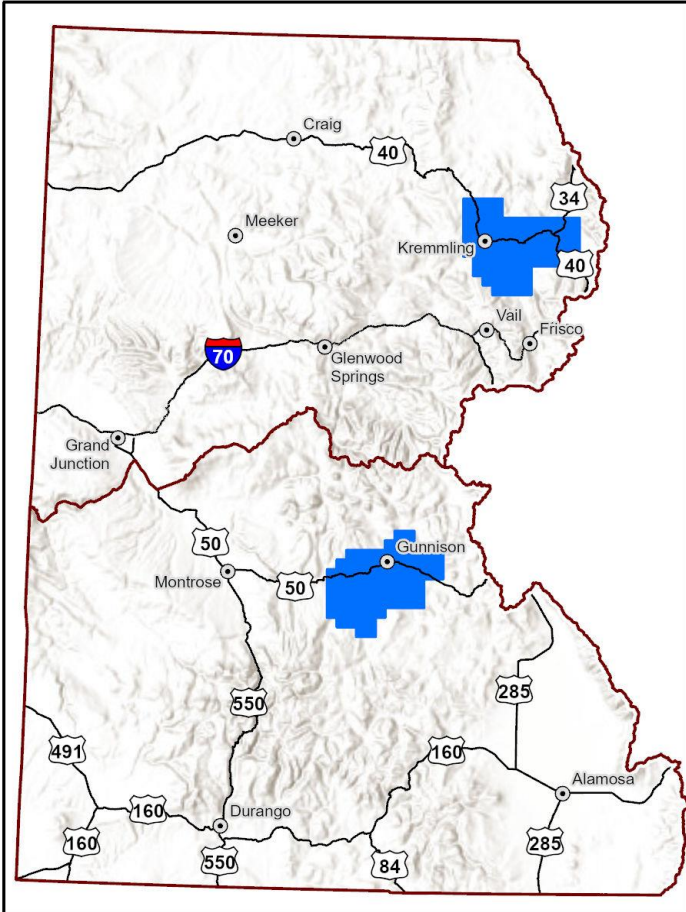
LIVE LIFE
OUTSIDE

RSF Model and lion density



LIVE LIFE
OUTSIDE

Middle Park and Gunnison Basin Mark-Resight Density Estimate



Middle Park Results

- RSF model and assumed densities from other studies = 2.7 independent lions/100 km²
- Mark-resight results Year 1 density = **2.54** independent lions/100 km²
- Very good Year 1 precision = 95% CI 1.8-3.7 independent lions/100 km²



LIVE LIFE
OUTSIDE