



# Colorado Outdoor Regional Partnerships

Jody Kennedy  
Regional Partnership Program Manager

Parks and Wildlife Commission  
January 18, 2023



LIVE LIFE  
OUTSIDE



**Regional Partnerships**  
Build on existing efforts to develop and implement local priorities



**Colorado Conservation, Outdoor Recreation & Climate Resilience Plan**



**CO-OP**  
Statewide advisory body supports development and implementation of a shared vision



Supports regional planning and capacity building. Coordinates CO-OP



**Parks & Wildlife Commission**

**DNR Interagency Council**





# Colorado Outdoor Regional Partnerships Initiative (RPI)

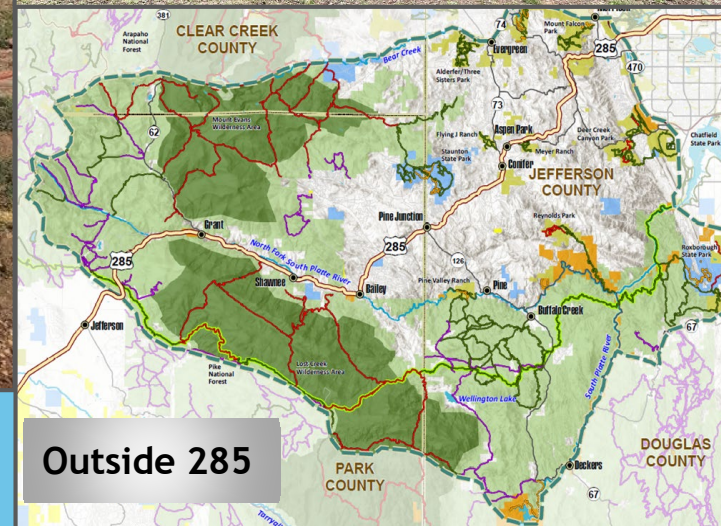
SLV GO!



Metro DNA



Gunnison STORC



Outside 285



LIVE LIFE OUTSIDE



# Statewide Sharing Network

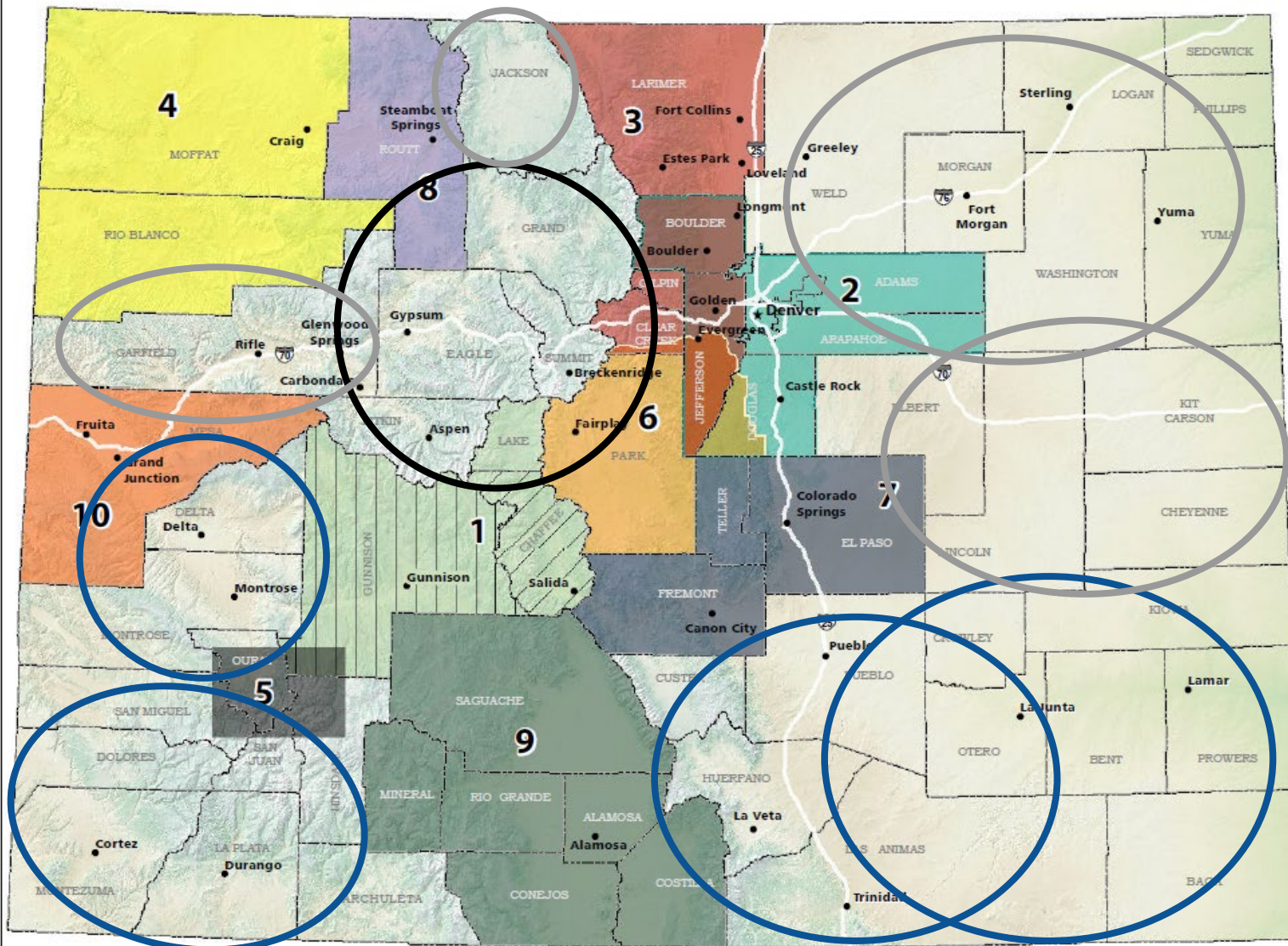
*Tools, resources, and lessons learned shared across partnerships*

- Wildlife conservation
- Sustainable outdoor recreation
- Data and geospatial tools
- Equity, diversity and inclusion
- Planning resources and template



Routt Recreation & Conservation Roundtable





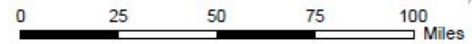
1. Central Colorado Recreation Partnership
  -  Envision Chaffee
  -  Gunnison STOR
2. Metro Denver Nature Alliance (Metro DNA)
3. NoCo PLACES 2050
4. Northwest Colorado Outdoor Coalition (NCOC)
5. Ouray Recreation & Conservation Alliance (ORCA)
6. Outside 285
7. Pikes Peak Outdoor Recreation Alliance (PPORA)
8. Routt Recreation Roundtable
9. San Luis Valley Great Outdoors
10. Two Rivers Conservation & Recreation Roundtable



LIVE LIFE OUTSIDE

## Colorado Outdoor Regional Partnerships 2022

[www.copartnership.org](http://www.copartnership.org)



# 2024 - 2028 Statewide Comprehensive Outdoor Recreation Plan (SCORP) Development

2023

CO-OP & RPI Engagement

2024

CO-OP, RPI & Public Engagement

## Research:

- Outdoor Recreation Participation
- Land Managers Survey
- Economic Contributions
- Equitable Access Analysis

Research Reports

Draft SCORP

Final SCORP

2026

Colorado  
Conservation, Outdoor  
Recreation & Climate  
Resilience Plan



LIVE LIFE  
OUTSIDE