



# GOCO UPDATE

---

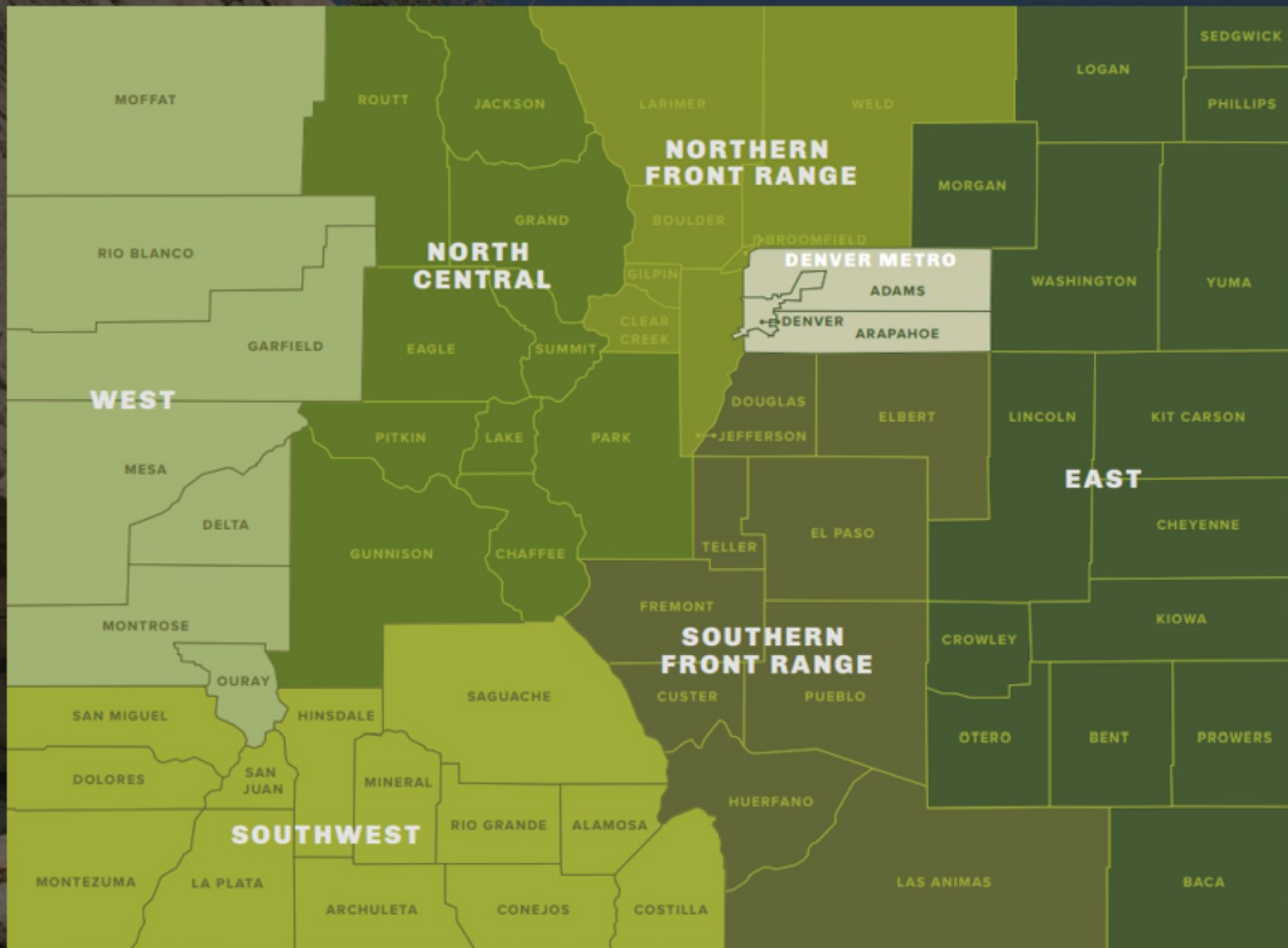
**CPW COMMISSION MEETING**

**JULY 20, 2023**

**DAN OMASTA, NORTH CENTRAL CO PROGRAM OFFICER**

**SCHAEFER / LGM FARMS**

# REGIONAL APPROACH



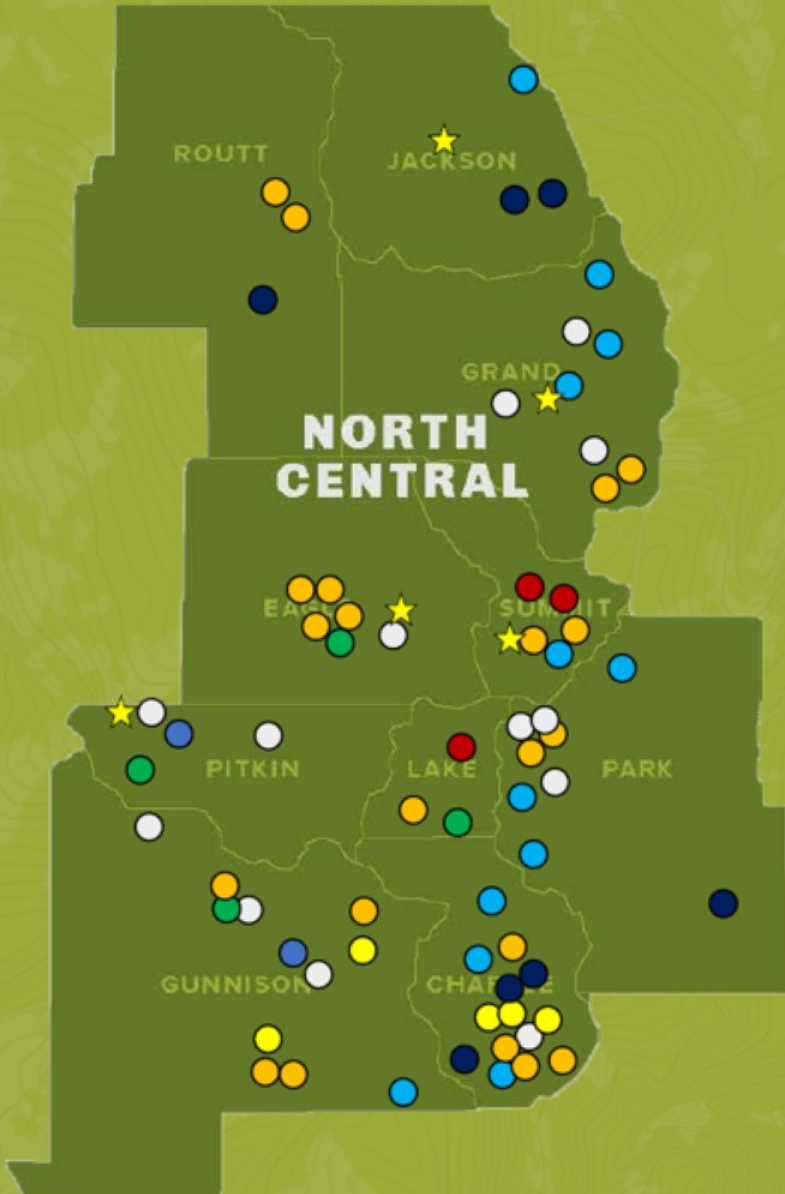
# INVESTMENT IN THE **NORTH CENTRAL REGION**



- Jackson County (53) - \$10,420,571
- Routt County (222) - \$60,052,949
- Grand County (84) - \$19,320,920
- Eagle County (84) - \$31,791,880
- Summit County (69) - \$10,584,208
- Pitkin County (27) - \$10,112,620
- Lake County (37) - \$12,082,071
- Park County (85) - \$15,784,827
- Gunnison County (151) - \$47,161,891
- Chaffee County (92) - \$16,928,394

**Total Project Investment TD (904): \$234,240,331**

# INVESTMENT IN THE NORTH CENTRAL REGION



- CPW Director's Innovation Fund (8): - \$129,483
- Youth Corps (21) - \$548,145
- RESTORE (12) - \$3,531,750
- Resilient Communities (14) - \$2,364,874
- Community Impact (5) - \$2,332,822
- Planning & Capacity (5) - \$619,890
- Stewardship Impact (2)- \$598,490
- Land Acquisition (2) - \$3,466,814

**Total Project Investment Since 2020 (65): \$13,462,785**

# LAND ACQUISITION



Schutt Wetlands, Crested Butte, CO  
Credit: Crested Butte Land Trust

# LAND ACQUISITION



Higher Ground Ranch, Crawford, CO  
Credit: Trust for Public Land

# STEWARDSHIP IMPACT



Gunnison Sustainable Tourism & Outdoor Recreation Committee  
Credit: Gunnison STOR

# RESTORE COLORADO

## HIGHLIGHTS (Since 2020)

47 Projects

\$12.3M Awarded

\$23.7M Leveraged Funds

160+ miles of fencing removed

19,191 acres of grassland restored

4,857 acres of mesic habitat restored

42.31 miles of instream habitat restored

3,864 acres of critical wetlands and floodplains restored

Credit: Jes Walton, Central Colorado Conservancy



NFWF



**COLORADO**  
Colorado Water  
Conservation Board  
Department of Natural Resources



**WALTON FAMILY  
FOUNDATION**



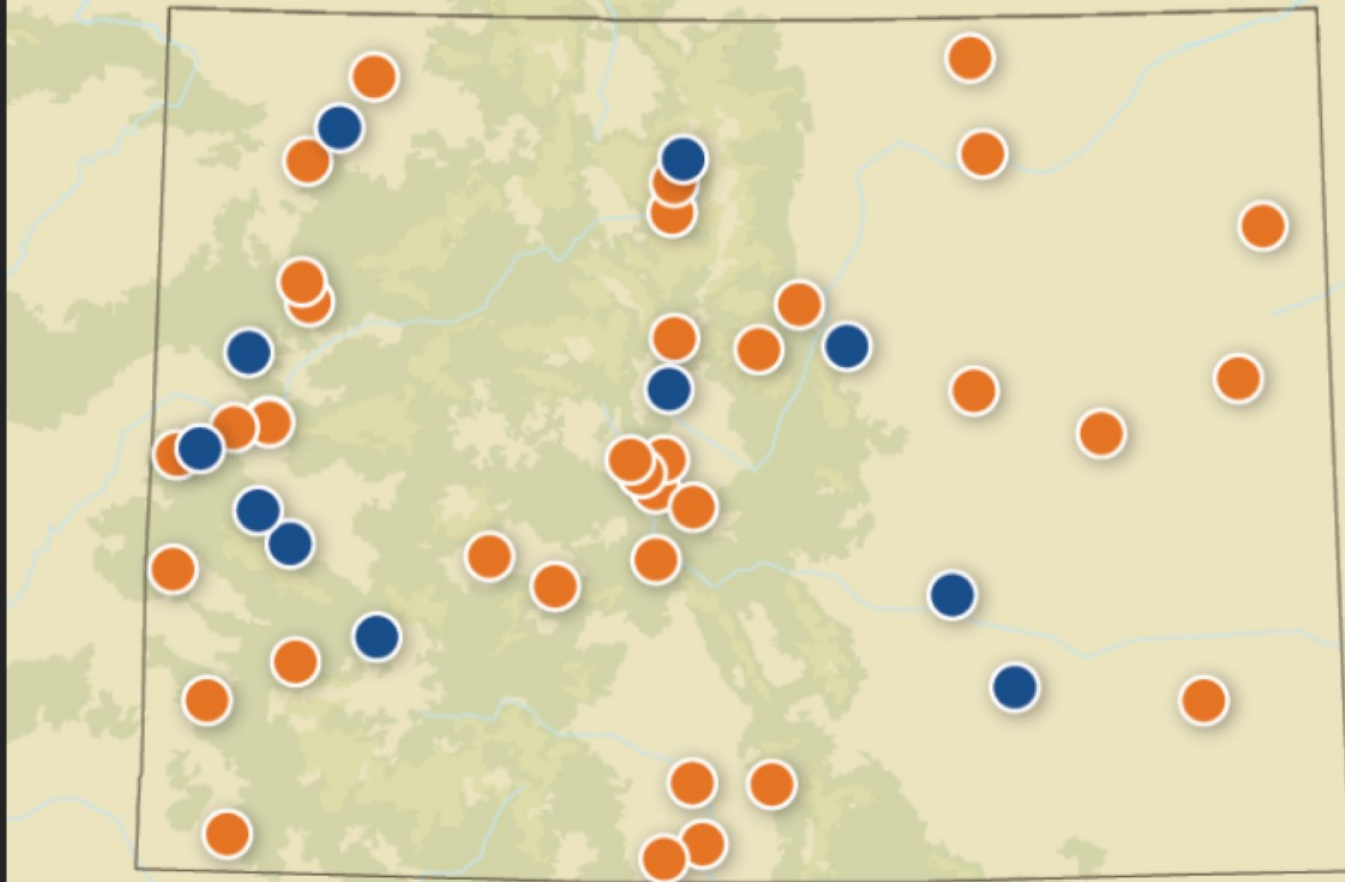
**COLORADO**  
Department of  
Natural Resources





# RESTORE COLORADO

## RESTORE COLORADO PROJECTS



○ 2020-22 Grant awards

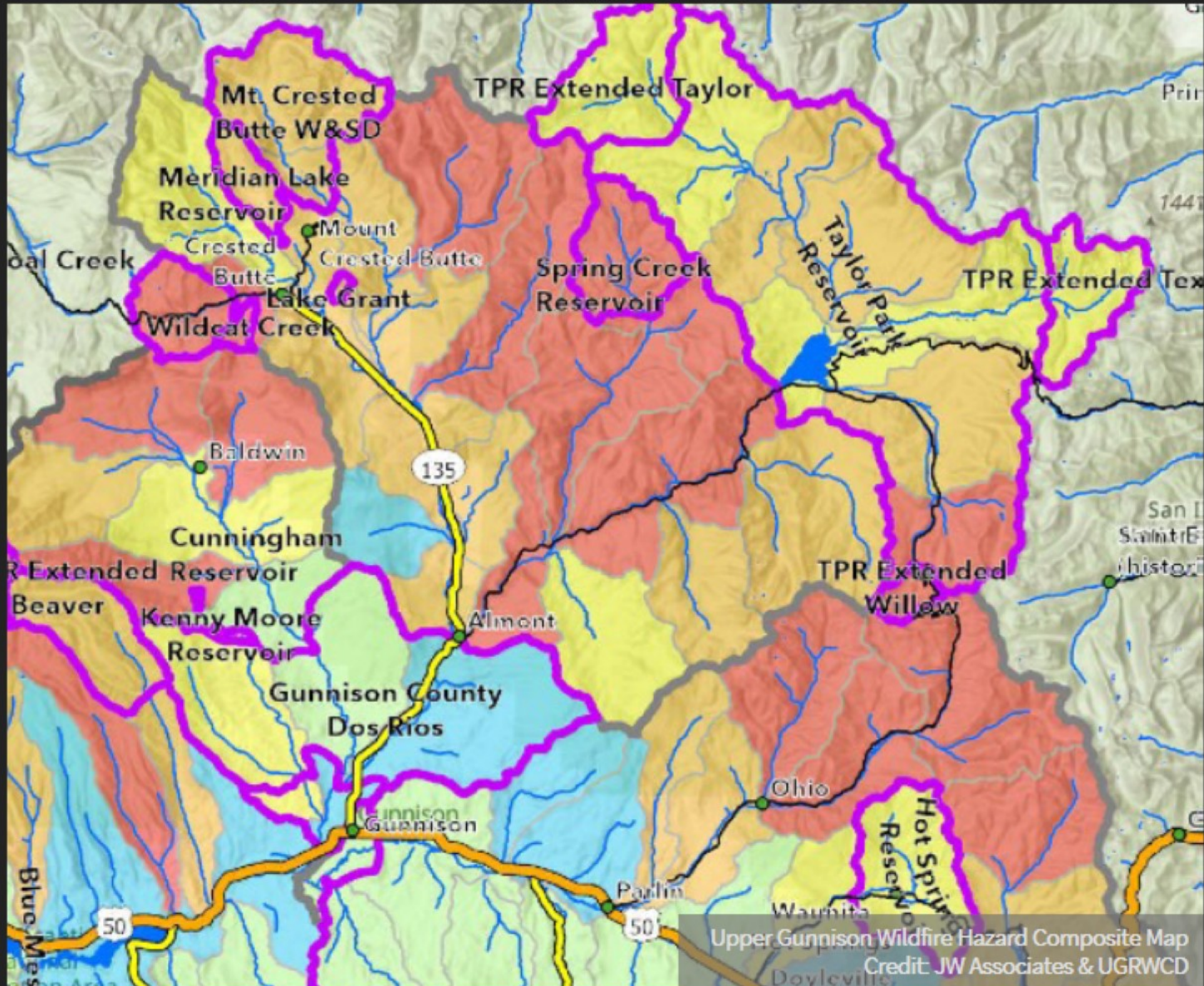
○ 2023 Grant awards

# RESTORE COLORADO



Sheep Creek, Park County, CO  
Credit: Colorado Open Lands

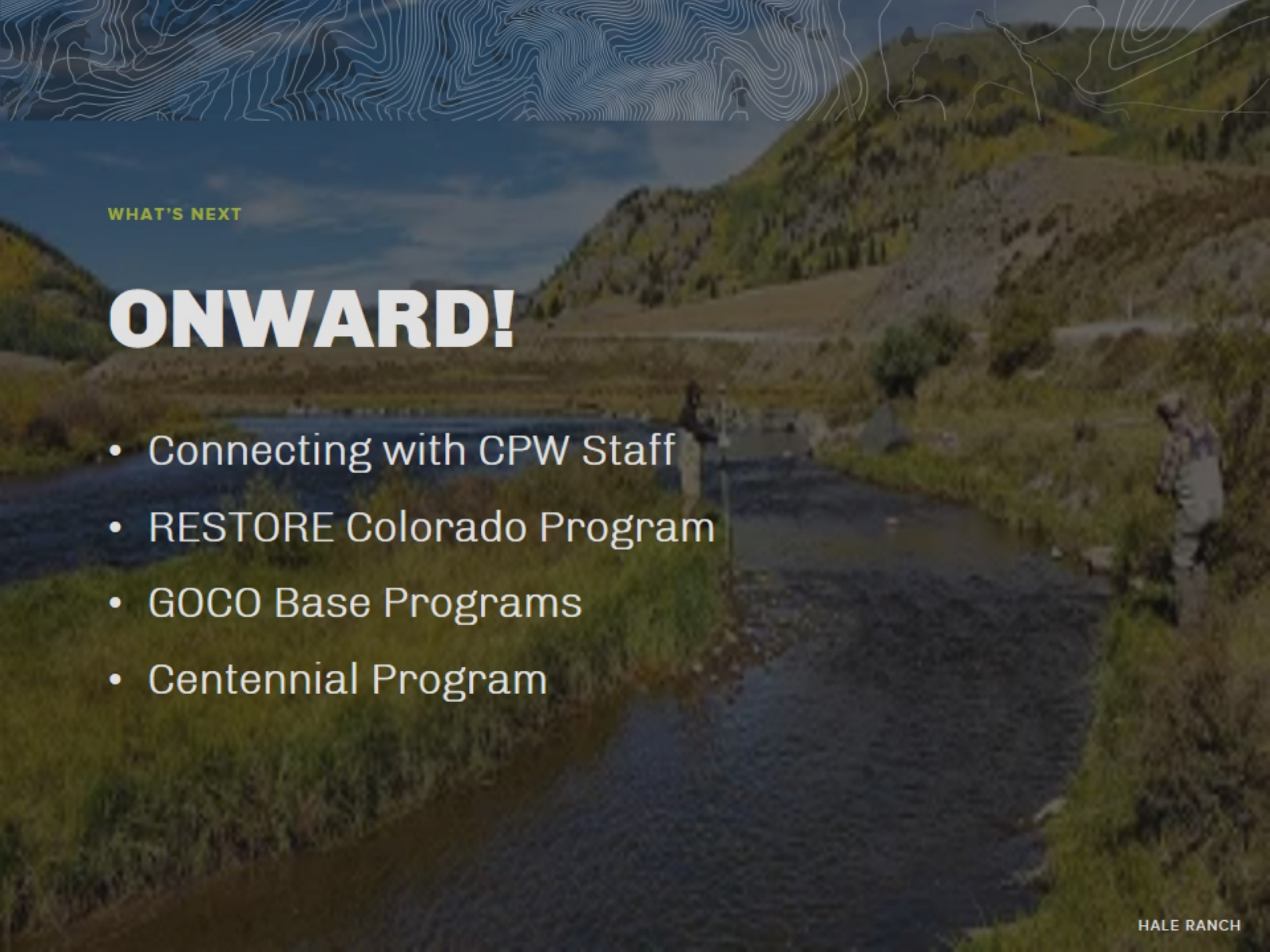
# RESTORE COLORADO



# RESTORE COLORADO



Colorado River Cutthroat Trout  
Credit: Western Native Trout Initiative

The background of the slide is a scenic landscape featuring a river flowing through a valley. The hills are covered in green vegetation, and the sky is a clear blue. A white topographic map overlay is visible in the upper left corner, showing contour lines and a small figure of a person. The overall tone is natural and outdoorsy.

WHAT'S NEXT

# ONWARD!

- Connecting with CPW Staff
- RESTORE Colorado Program
- GOCO Base Programs
- Centennial Program



# THANK YOU.

