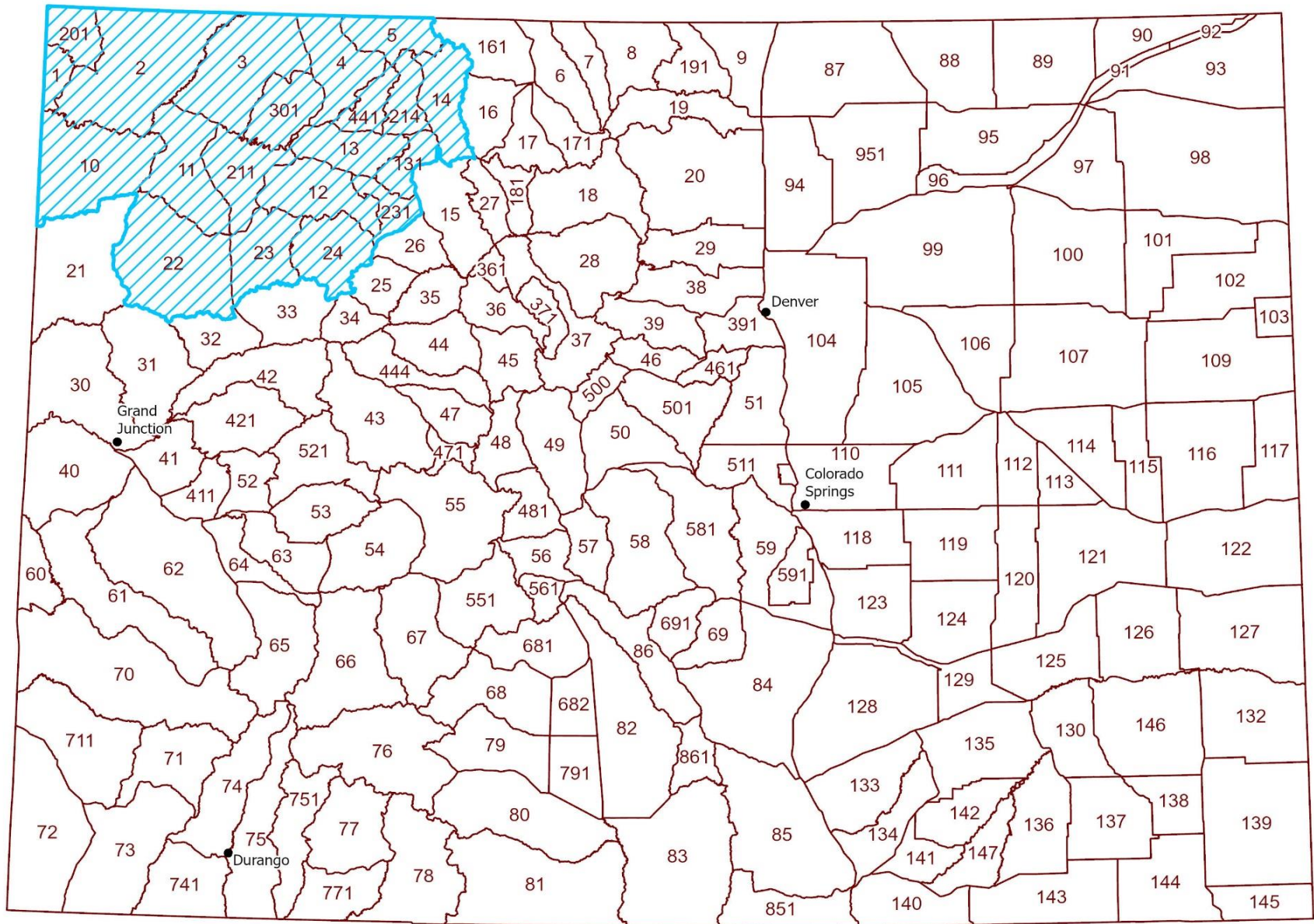


Deer, Elk, Pronghorn, and Moose Limited License Recommendations and State of the Herds Update


Andy Holland - Big Game Manager
Colorado Parks and Wildlife

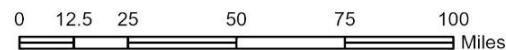


LIVE LIFE
OUTSIDE



Severe Winter Zone

 DAUs with significant license reductions due to severe winter



Severe Winter Zone Deer License Recommendations

- Male and either-sex deer license recommendations are reduced by 5,000 (-48%) combined in D-2 (Bears Ears), D-6 (Rangely), and D-7 (White River).
- Female licenses are reduced by 2,900 (-94%) combined and to the minimum of 10 licenses per hunt code in D-2 (Bears Ears) and D-7 (White River).
- Explanation of minimum of 10 licenses per hunt code.



LIVE LIFE
OUTSIDE

Severe Winter Zone Antlerless Elk License Recommendations

- E-2 (Bears Ears) antlerless licenses reduced by 5,600 (-89%) with all public cow hunts reduced to the minimum of 10 licenses per hunt code.
- E-6 (White River) antlerless licenses reduced by 8,700 (-63%).
- E-21 (Rangely) antlerless licenses reduced by 400 (-60%).



LIVE LIFE
OUTSIDE

Severe Winter Zone Pronghorn License Recommendations

- Pronghorn male and female license quotas are reduced to the minimum of 10 per hunt code.
- Male licenses are reduced by 1,100 (-74%)
- Female licenses are reduced by 700 (-83%).
- Affected DAUs include PH-9 (Great Divide), PH-10 (Maybell), PH-11 (Sand Wash), and PH-34 (Axial Basin).



LIVE LIFE
OUTSIDE

Statewide Overview

- Limited license recommendations
 - 217,000 limited licenses (-31,000, -13%)
 - 2,500 hunt quotas
- 770,000 total big game animals
 - 136 herds or Data Analysis Units (DAUs)
- Acknowledgments



LIVE LIFE
OUTSIDE

Tiered Approach of Presenting Recommendations

- This presentation (most general)
 - Statewide summary by species
 - Highlighting select Regional and DAU specific changes
- Commission Mailing
 - Letter to Commission
 - Summary by Region and Species Table
 - Species specific tables
 - DAU level summary
 - Chapter 2, recommended quotas for all 2,500 hunts (most detailed)



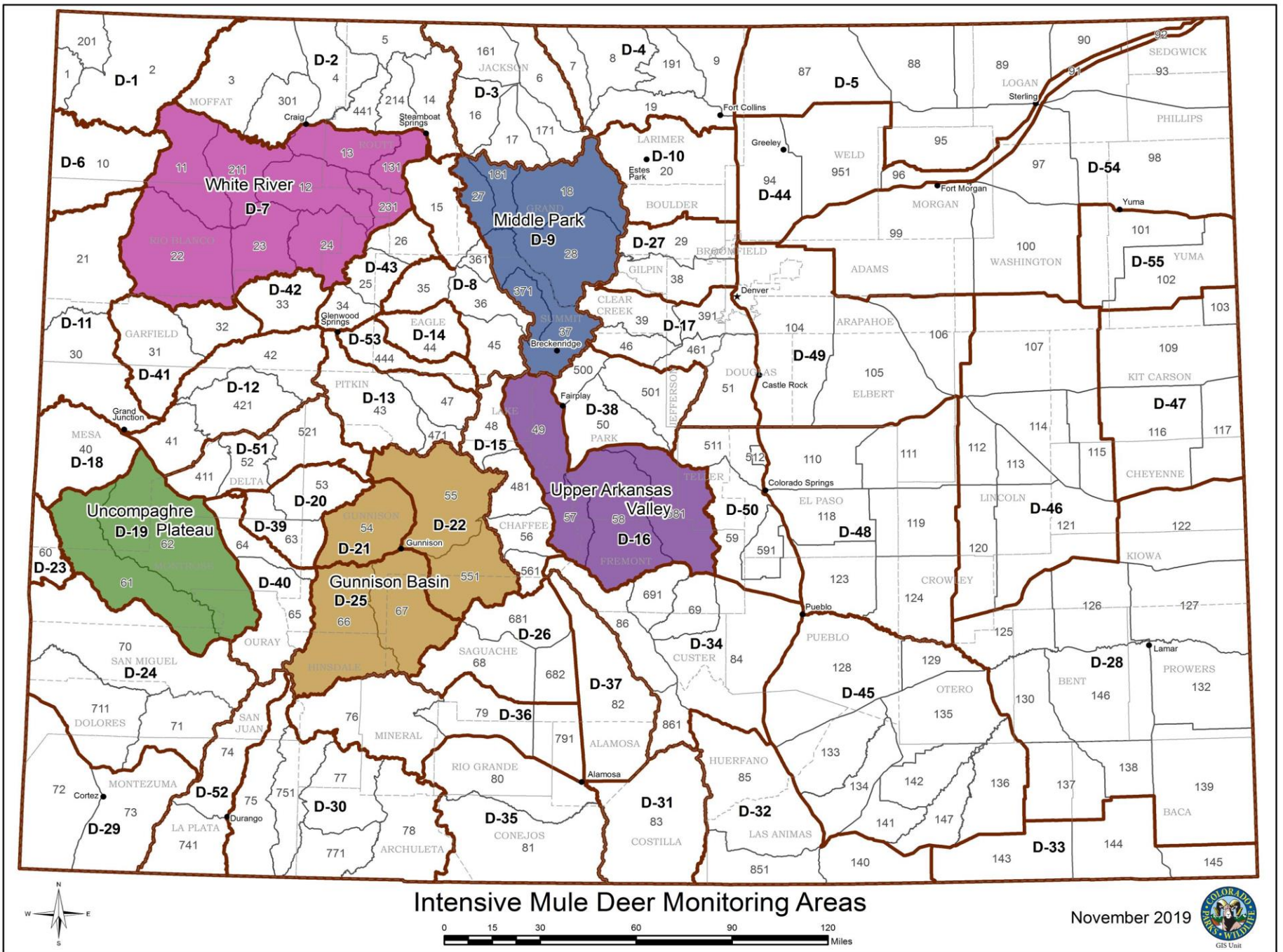
LIVE LIFE
OUTSIDE

Information Supporting Recommendations

- Herd Management Plan (HMP) objectives
- Herd performance and trends
 - Age and sex classification data
 - Survival rates
 - Population estimates
 - Chronic wasting disease
 - Field observations
 - Public input and reports
- Past licensing trends
- Previous year's harvest



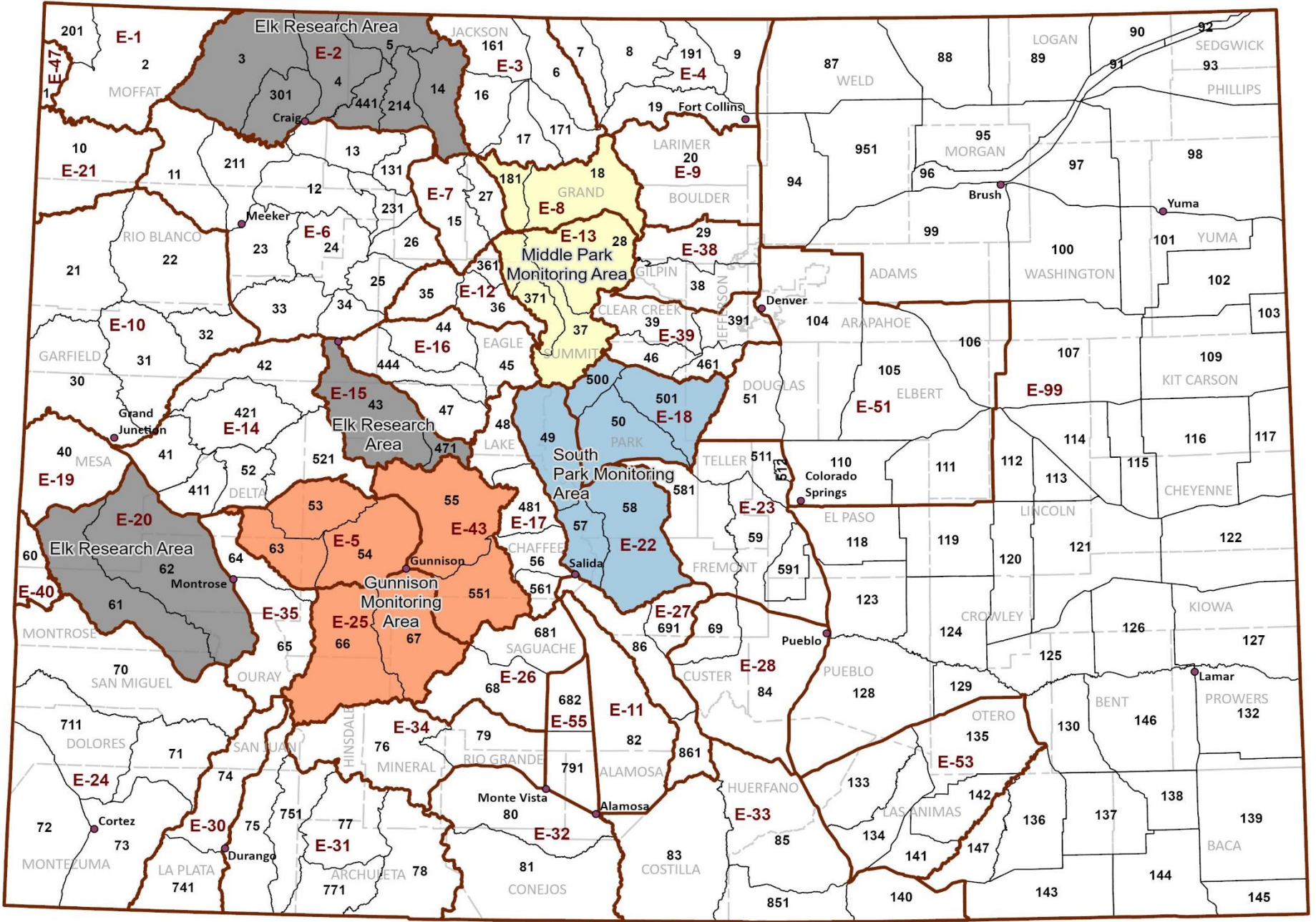
LIVE LIFE
OUTSIDE



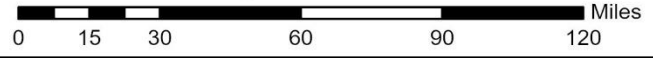
Intensive Mule Deer Monitoring Areas

November 2019





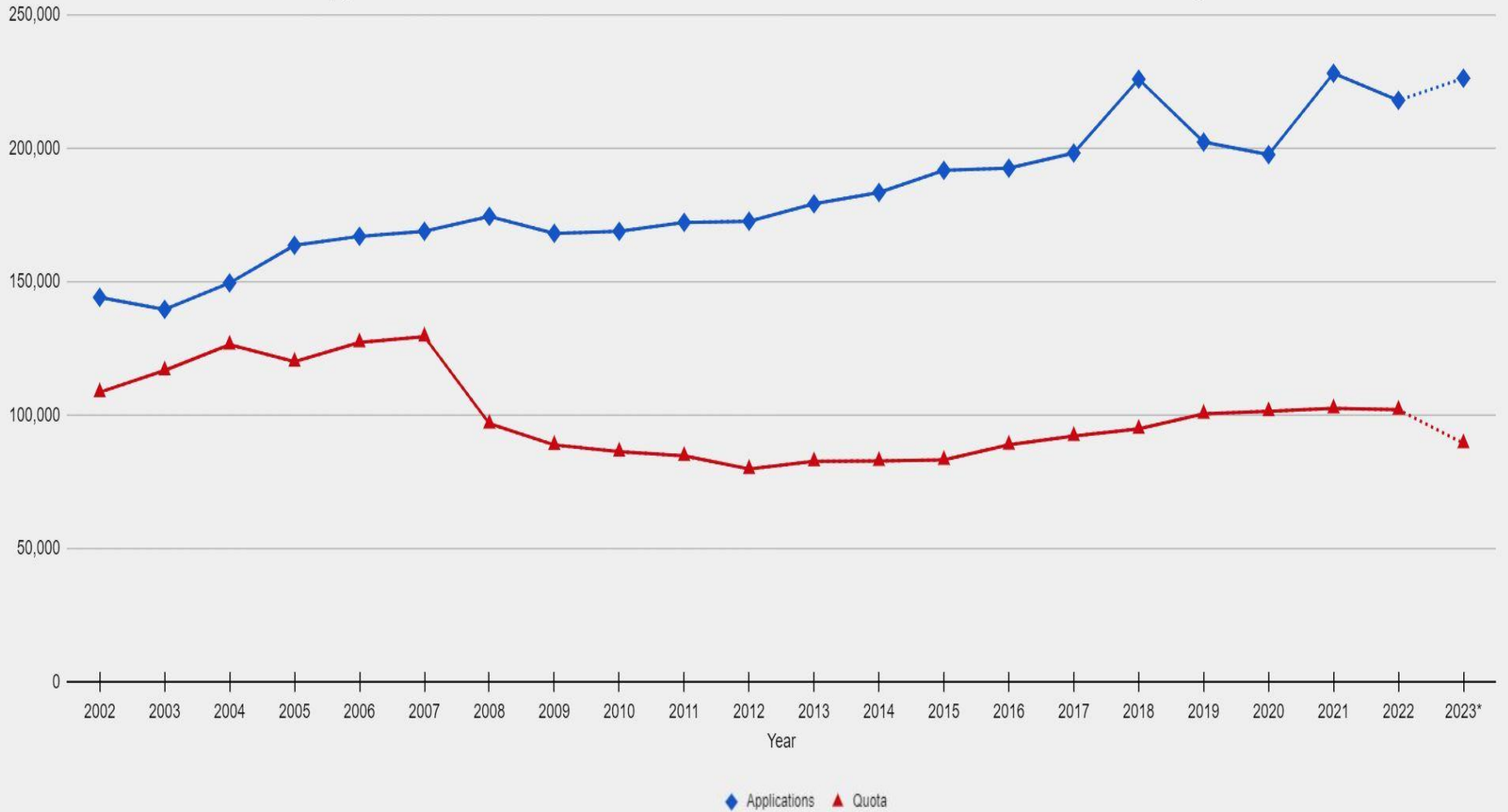
Elk Monitoring and Research Areas



October 2022



Deer Applications and Limited License Quotas for Established Hunts By Year



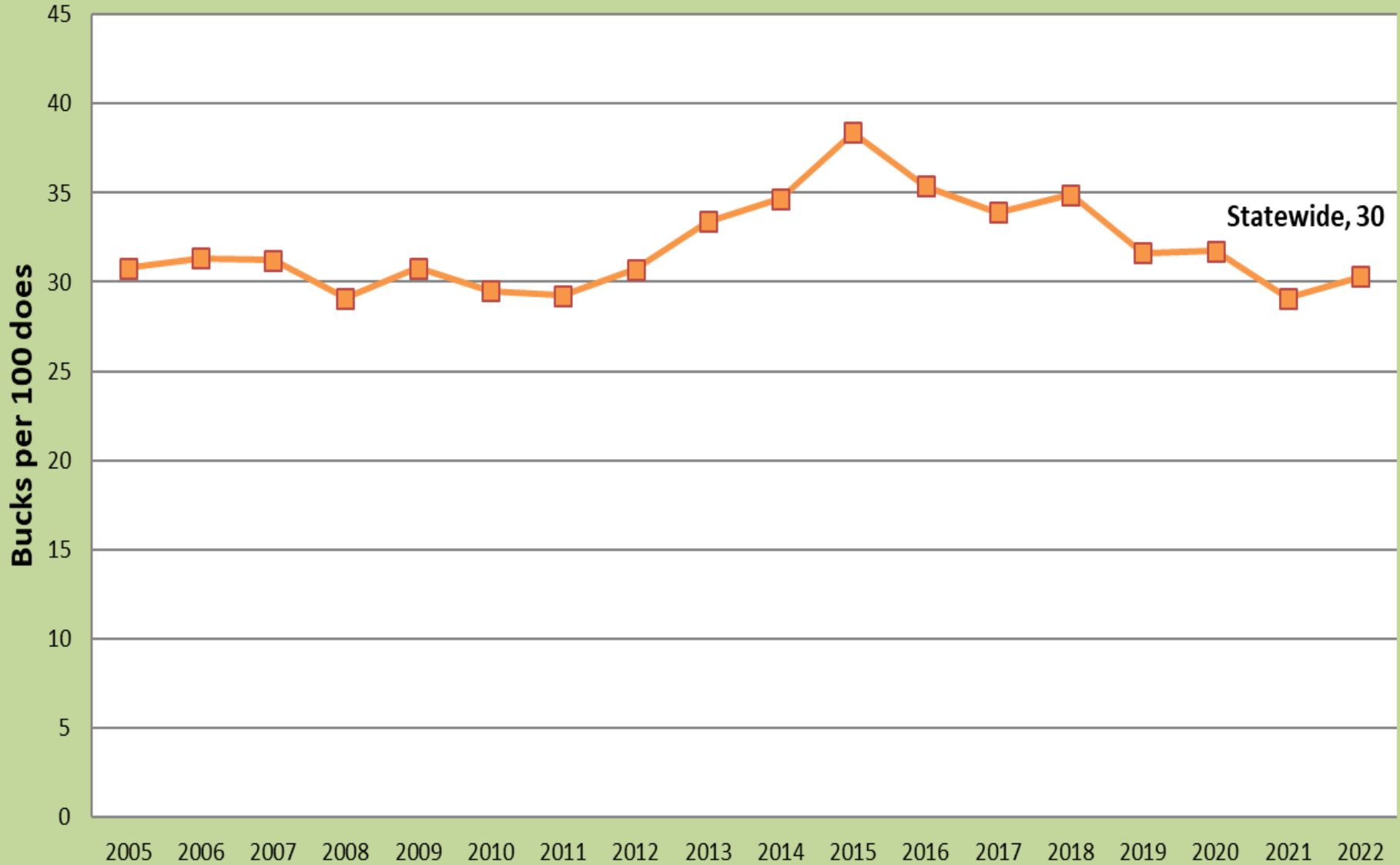
| | 2002 | 2003 | 2004 | 2005 | 2006 | 2007 | 2008 | 2009 | 2010 | 2011 | 2012 | 2013 | 2014 | 2015 | 2016 | 2017 | 2018 | 2019 | 2020 | 2021 | 2022 | 2023* |
|---------------|---------|---------|---------|---------|---------|---------|---------|---------|---------|---------|---------|---------|---------|---------|---------|---------|---------|---------|---------|---------|---------|---------|
| Applications | 144,122 | 139,629 | 149,532 | 163,636 | 166,993 | 168,862 | 174,465 | 168,107 | 168,862 | 172,234 | 172,650 | 179,182 | 183,431 | 191,708 | 192,538 | 198,205 | 225,855 | 202,305 | 197,604 | 228,087 | 217,937 | 226,240 |
| License Quota | 108,567 | 116,742 | 126,410 | 120,005 | 127,257 | 129,426 | 96,791 | 88,820 | 86,328 | 84,713 | 79,813 | 82,680 | 82,806 | 83,204 | 88,919 | 92,187 | 94,855 | 100,483 | 101,457 | 102,507 | 102,011 | 89,433 |

*Projected Estimate

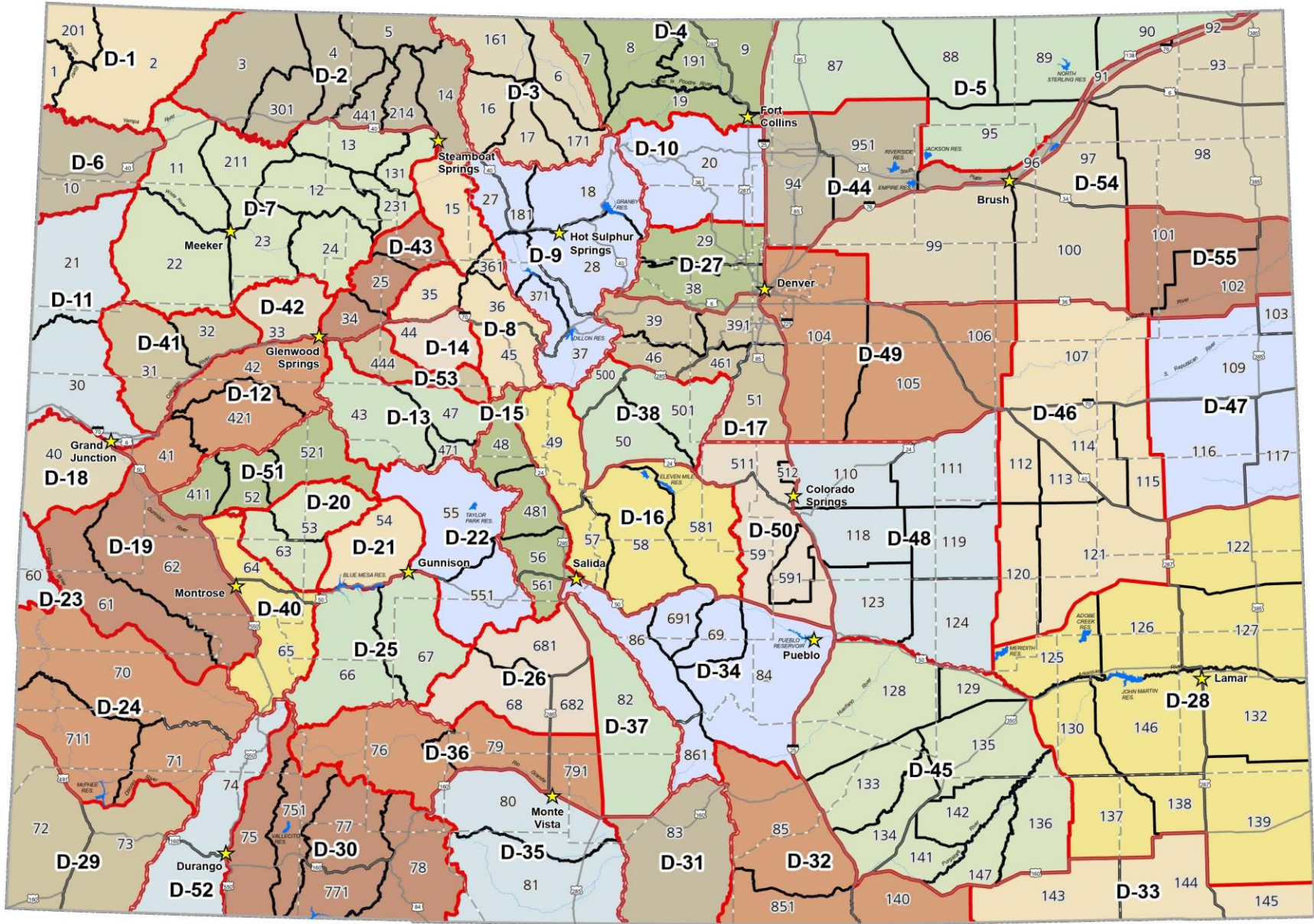


LIVE LIFE
OUTSIDE

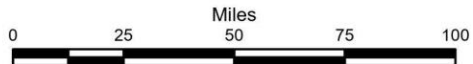
Statewide Average of Post-hunt Deer Buck/Doe Ratios 2005-2022



LIVE LIFE
OUTSIDE



2022 Deer DAU and GMU



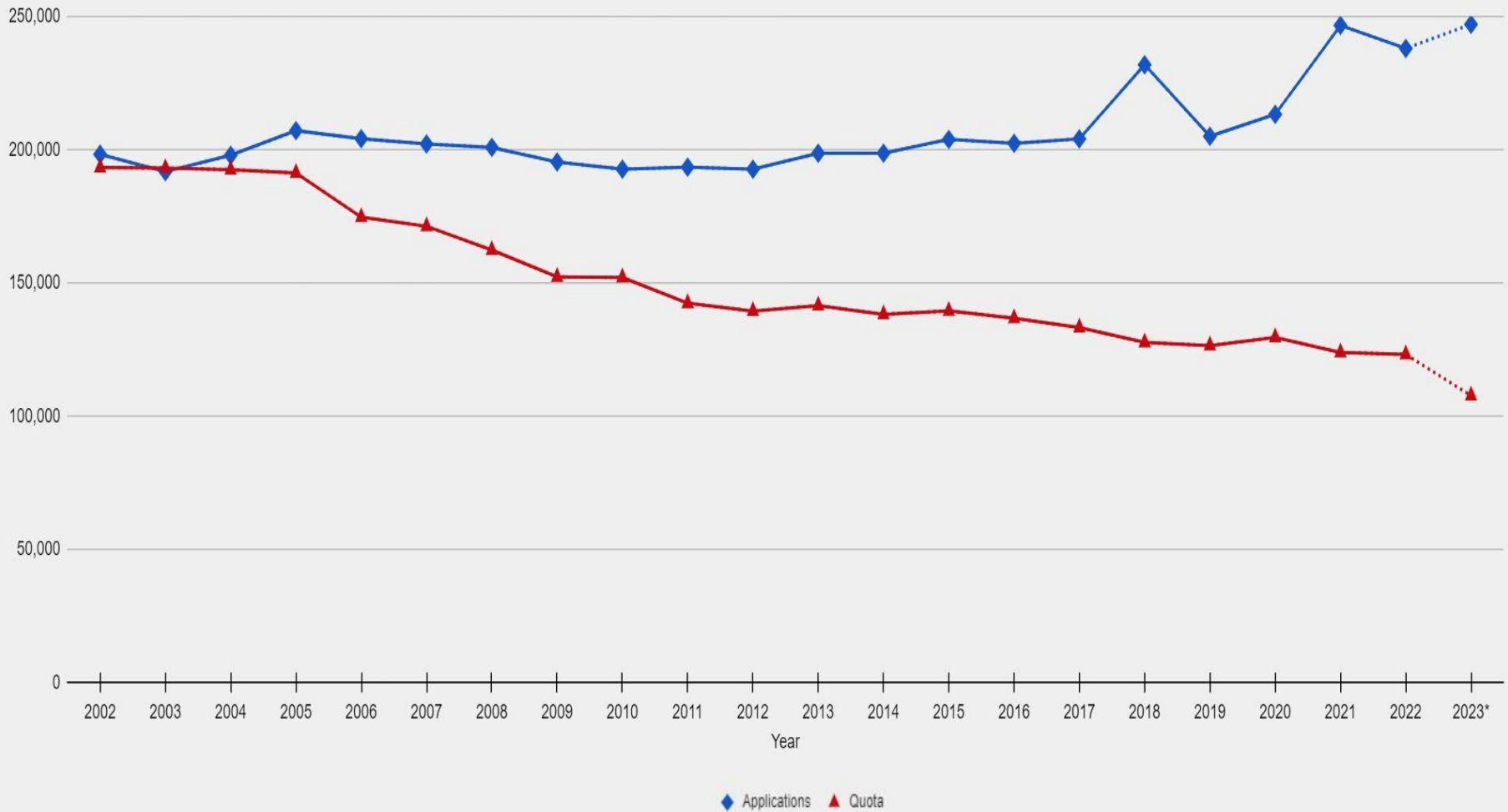
GIS Unit
April 2022

★ CPW Office

□ GMU (Game Management Unit) Boundary

□ DAU (Data Analysis Unit) Boundary

Elk Applications and Limited License Quotas for Established Hunts By Year



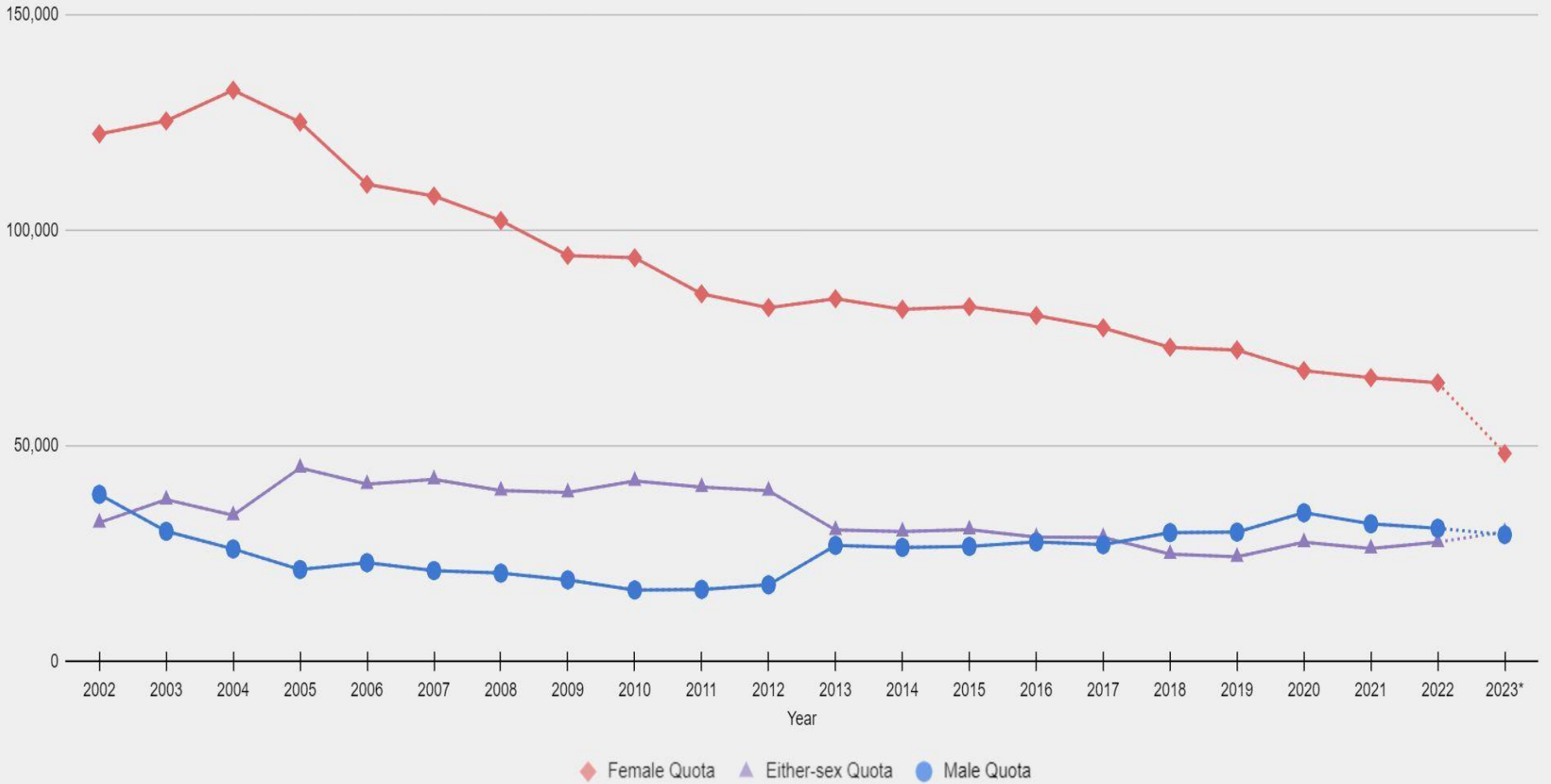
| | 2002 | 2003 | 2004 | 2005 | 2006 | 2007 | 2008 | 2009 | 2010 | 2011 | 2012 | 2013 | 2014 | 2015 | 2016 | 2017 | 2018 | 2019 | 2020 | 2021 | 2022 | 2023* |
|---------------|---------|---------|---------|---------|---------|---------|---------|---------|---------|---------|---------|---------|---------|---------|---------|---------|---------|---------|---------|---------|---------|---------|
| Applications | 198,245 | 191,714 | 197,866 | 207,108 | 204,074 | 202,111 | 200,826 | 195,332 | 192,655 | 193,380 | 192,638 | 198,621 | 198,649 | 203,823 | 202,364 | 204,024 | 231,846 | 204,984 | 213,230 | 246,602 | 237,959 | 247,015 |
| License Quota | 193,245 | 193,049 | 192,474 | 191,249 | 174,663 | 171,210 | 162,303 | 152,214 | 152,012 | 142,347 | 139,397 | 141,483 | 138,186 | 139,482 | 136,706 | 133,199 | 127,608 | 126,458 | 129,532 | 123,866 | 123,137 | 107,685 |

*Projected Estimate



LIVE LIFE
OUTSIDE

Elk Limited License Quotas for Established Hunts by Sex and Year

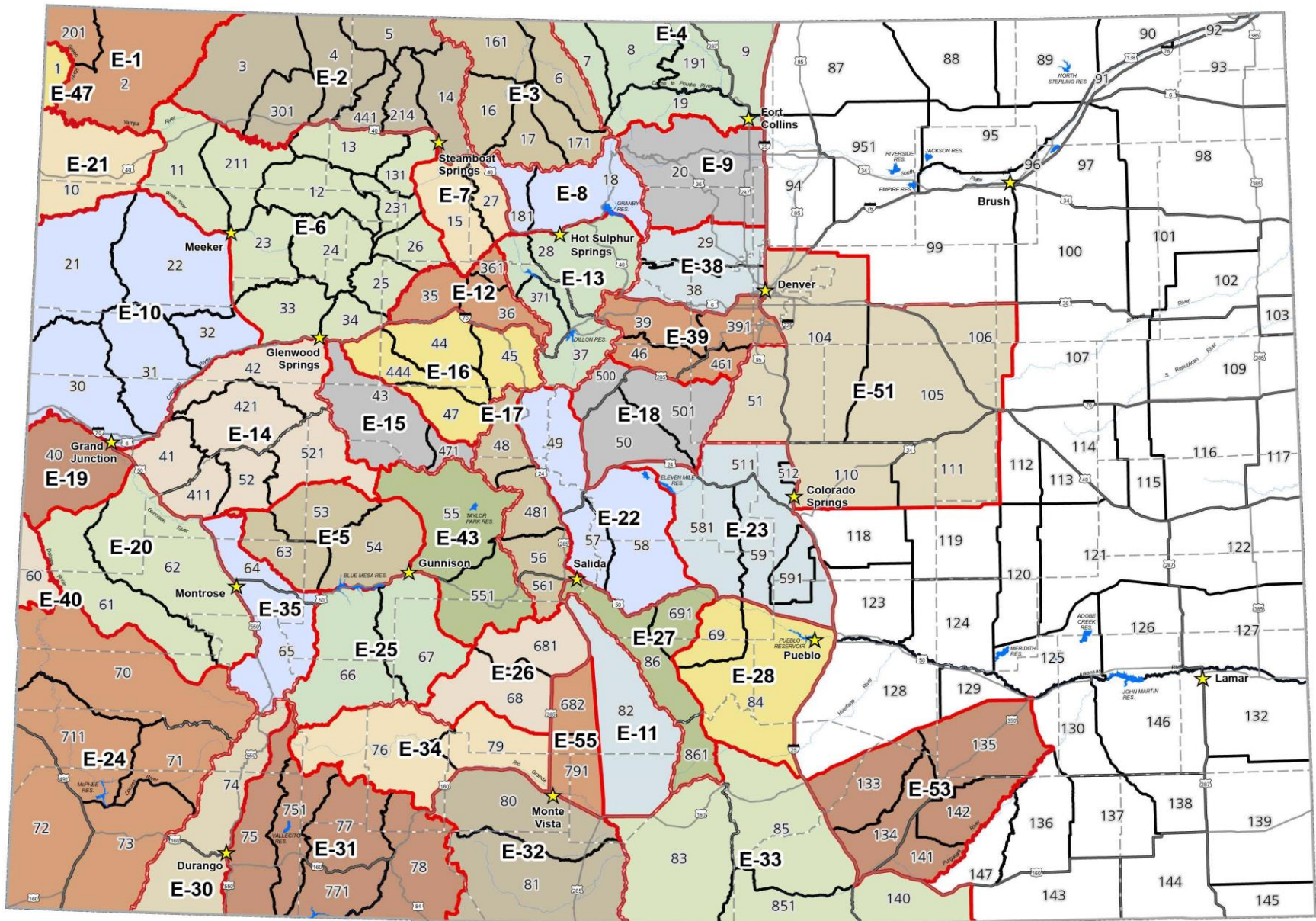


| | 2002 | 2003 | 2004 | 2005 | 2006 | 2007 | 2008 | 2009 | 2010 | 2011 | 2012 | 2013 | 2014 | 2015 | 2016 | 2017 | 2018 | 2019 | 2020 | 2021 | 2022 | 2023* |
|------------------|---------|---------|---------|---------|---------|---------|---------|--------|--------|--------|--------|--------|--------|--------|--------|--------|--------|--------|--------|--------|--------|--------|
| Female Quota | 122,329 | 125,339 | 132,489 | 125,062 | 110,657 | 107,938 | 102,221 | 94,136 | 93,599 | 85,246 | 82,049 | 84,118 | 81,657 | 82,247 | 80,209 | 77,353 | 72,843 | 72,224 | 67,424 | 65,785 | 64,606 | 48,246 |
| Either-sex Quota | 32,185 | 37,537 | 33,905 | 44,875 | 41,117 | 42,212 | 39,615 | 39,168 | 41,853 | 40,411 | 39,593 | 30,470 | 30,097 | 30,571 | 28,798 | 28,777 | 24,901 | 24,245 | 27,639 | 26,177 | 27,667 | 30,055 |
| Male Quota | 38,731 | 30,173 | 26,080 | 21,312 | 22,889 | 21,060 | 20,467 | 18,910 | 16,560 | 16,690 | 17,755 | 26,895 | 26,432 | 26,664 | 27,699 | 27,069 | 29,864 | 29,989 | 34,469 | 31,904 | 30,864 | 29,384 |

*Projected Estimate



LIVE LIFE
OUTSIDE



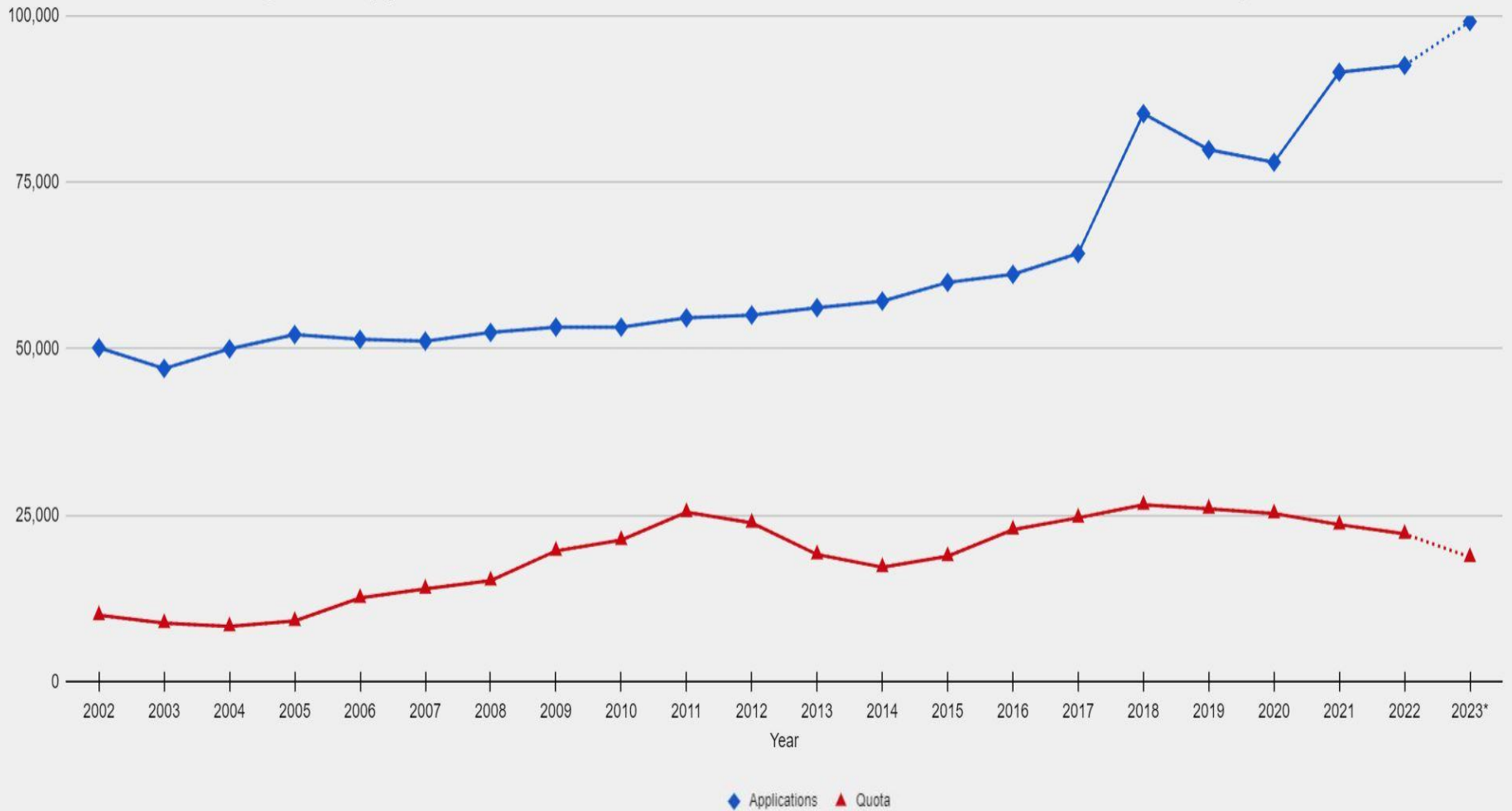
2022 Eik DAU and GMU



April 2022

- CPW Office
- GMU (Game Management Unit) Boundary
- DAU (Data Analysis Unit) Boundary

Pronghorn Applications and Limited License Quotas for Established Hunts By Year

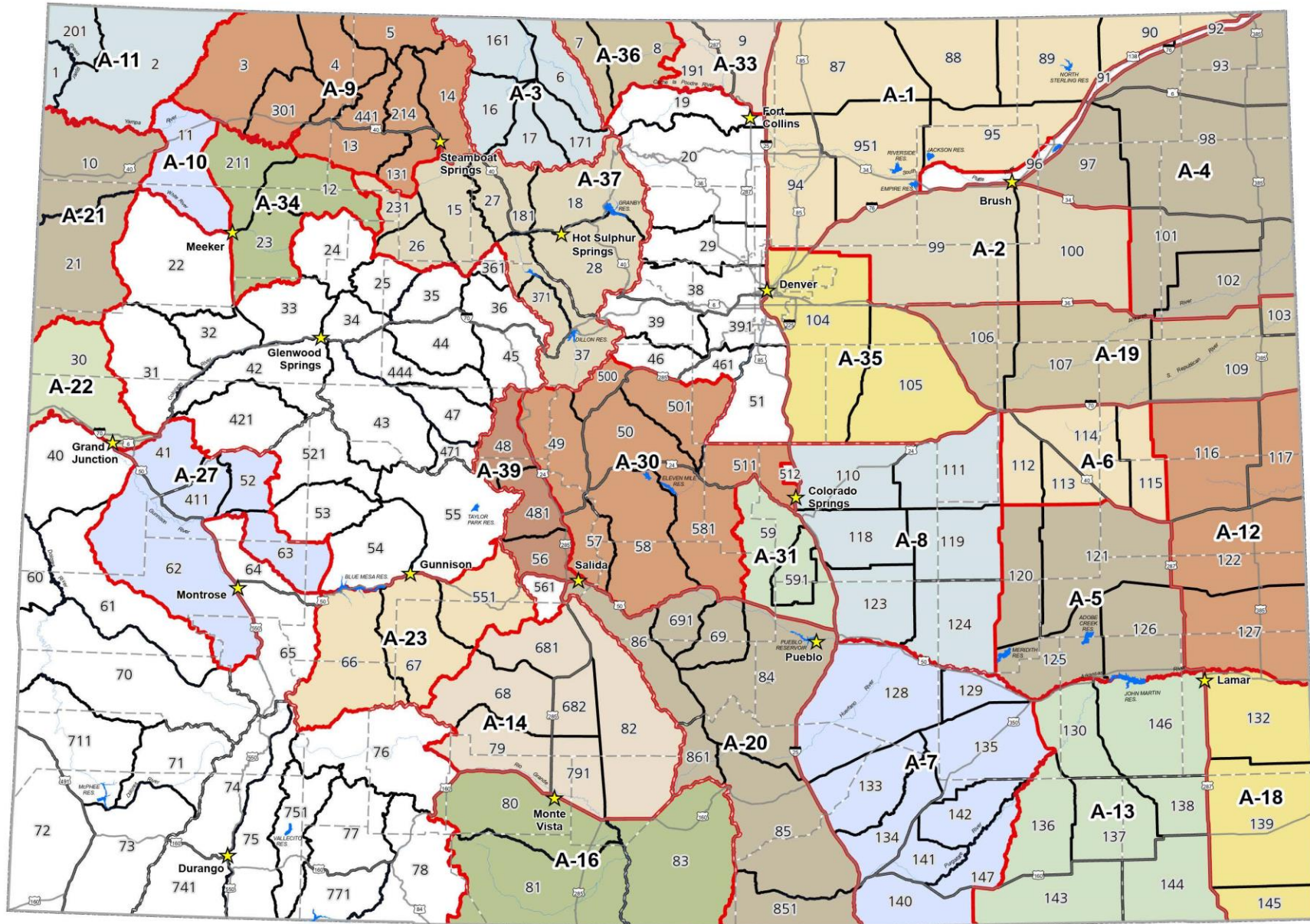


| | 2002 | 2003 | 2004 | 2005 | 2006 | 2007 | 2008 | 2009 | 2010 | 2011 | 2012 | 2013 | 2014 | 2015 | 2016 | 2017 | 2018 | 2019 | 2020 | 2021 | 2022 | 2023* |
|---------------|--------|--------|--------|--------|--------|--------|--------|--------|--------|--------|--------|--------|--------|--------|--------|--------|--------|--------|--------|--------|--------|--------|
| Applications | 50,144 | 47,043 | 49,977 | 52,136 | 51,426 | 51,149 | 52,456 | 53,252 | 53,242 | 54,647 | 55,065 | 56,174 | 57,163 | 59,968 | 61,178 | 64,309 | 85,317 | 79,886 | 78,007 | 91,540 | 92,554 | 99,140 |
| License Quota | 9,980 | 8,802 | 8,314 | 9,116 | 12,573 | 13,957 | 15,196 | 19,651 | 21,286 | 25,454 | 23,866 | 19,113 | 17,202 | 18,853 | 22,844 | 24,625 | 26,563 | 25,981 | 25,278 | 23,596 | 22,199 | 18,718 |

*Projected Estimate



LIVE LIFE
OUTSIDE



2022 Pronghorn DAU and GMU



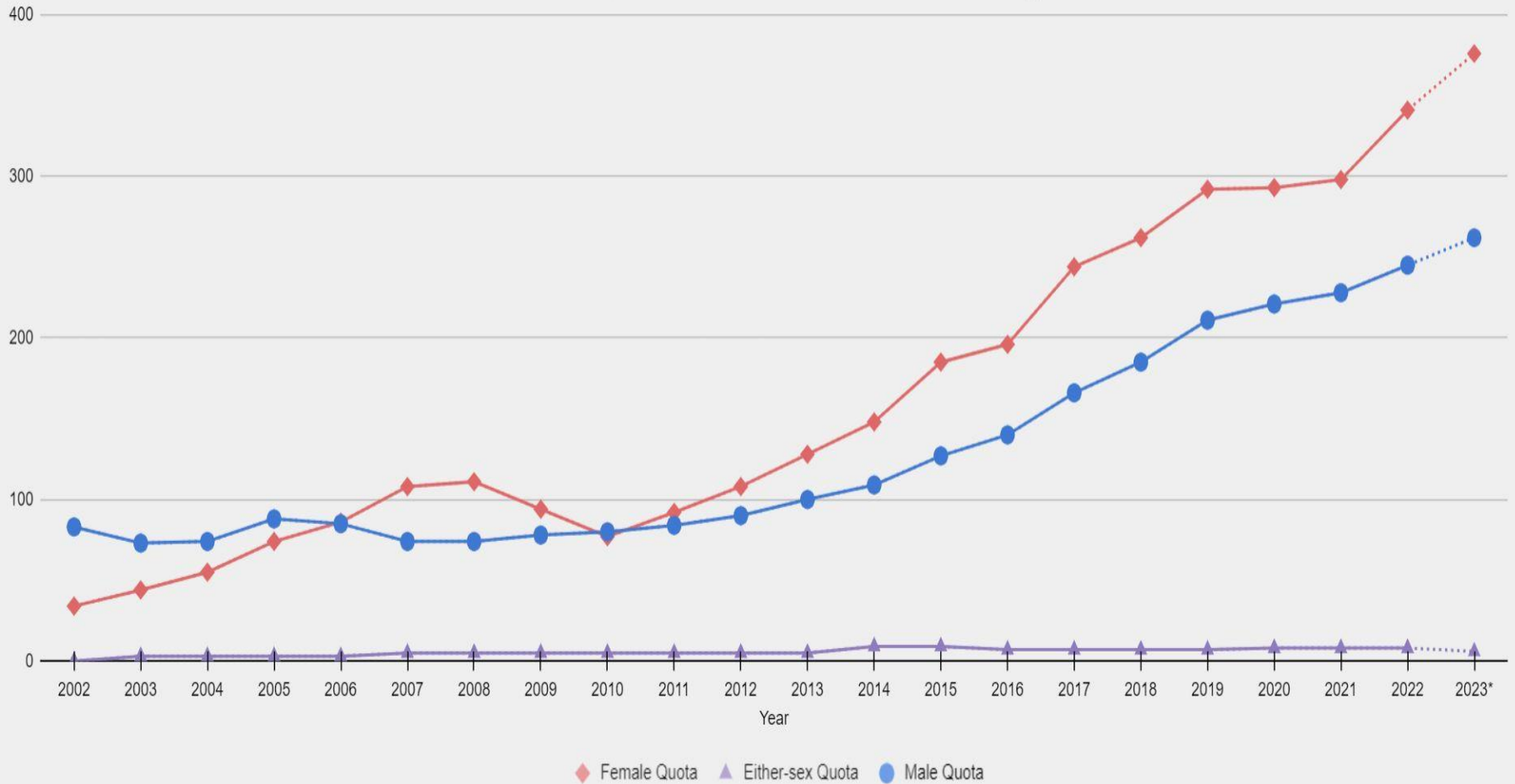
GIS Unit
April 2022

★ CPW Office

□ GMU (Game Management Unit) Boundary

□ DAU (Data Analysis Unit) Boundary

Moose Limited License Quotas for Established Hunts by Sex and Year

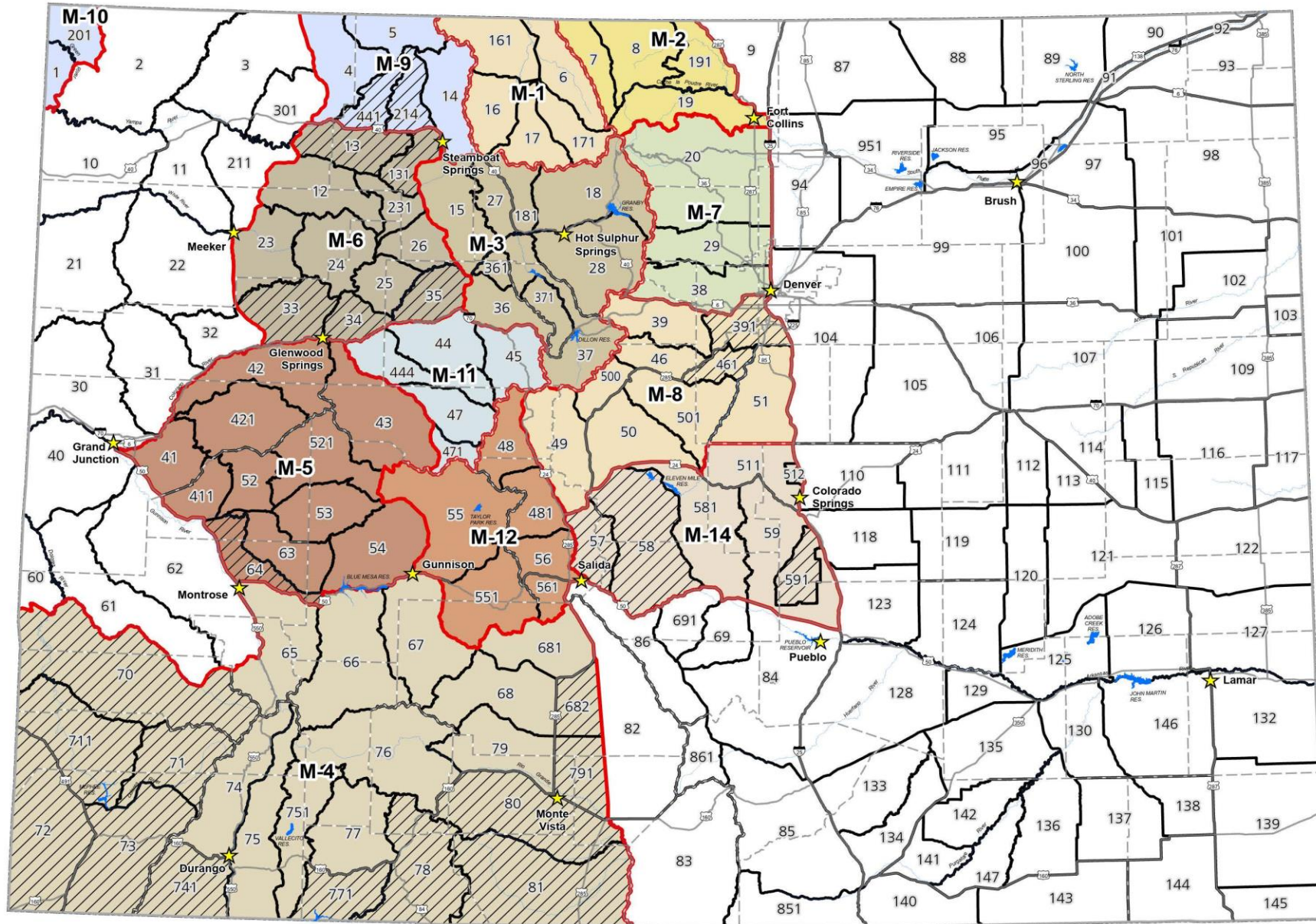


| | 2002 | 2003 | 2004 | 2005 | 2006 | 2007 | 2008 | 2009 | 2010 | 2011 | 2012 | 2013 | 2014 | 2015 | 2016 | 2017 | 2018 | 2019 | 2020 | 2021 | 2022 | 2023* | |
|------------------|------|------|------|------|------|------|------|------|------|------|------|------|------|------|------|------|------|------|------|------|------|-------|---|
| Female Quota | 34 | 44 | 55 | 74 | 86 | 108 | 111 | 94 | 77 | 92 | 108 | 128 | 148 | 185 | 196 | 244 | 262 | 292 | 293 | 298 | 341 | 376 | |
| Either-sex Quota | 0 | 3 | 3 | 3 | 3 | 5 | 5 | 5 | 5 | 5 | 5 | 5 | 9 | 9 | 7 | 7 | 7 | 7 | 8 | 8 | 8 | 8 | 6 |
| Male Quota | 83 | 73 | 74 | 88 | 85 | 74 | 74 | 78 | 80 | 84 | 90 | 100 | 109 | 127 | 140 | 166 | 185 | 211 | 221 | 228 | 245 | 262 | |

*Projected Estimate



LIVE LIFE
OUTSIDE



2022 Moose DAU and GMU



GIS Unit
April 2022

★ CPW Office

□ GMU (Game Management Unit) Boundary

▭ DAU (Data Analysis Unit) Boundary

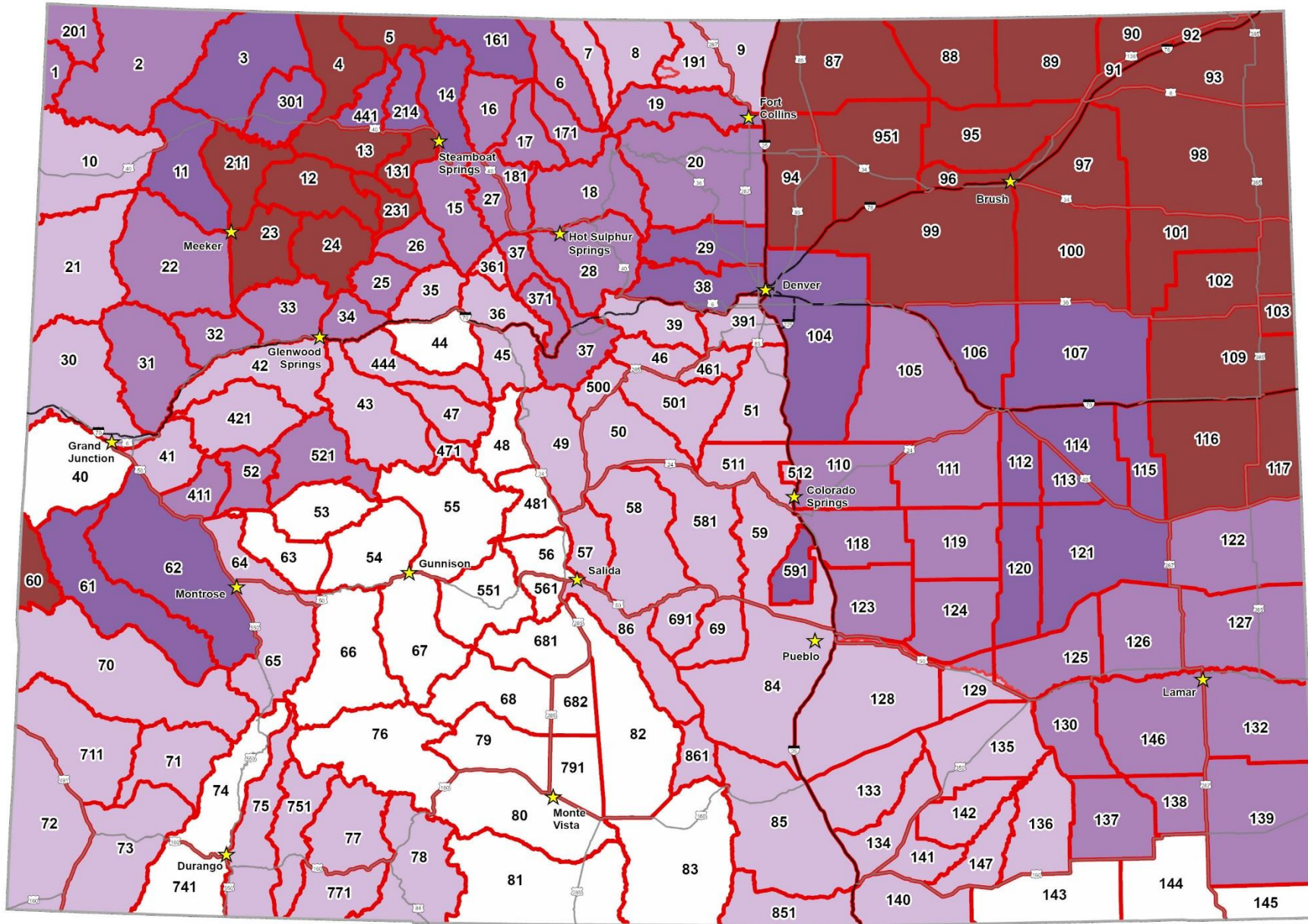
▨ Non-Hunted GMUs



Questions and Discussion



LIVE LIFE
OUTSIDE



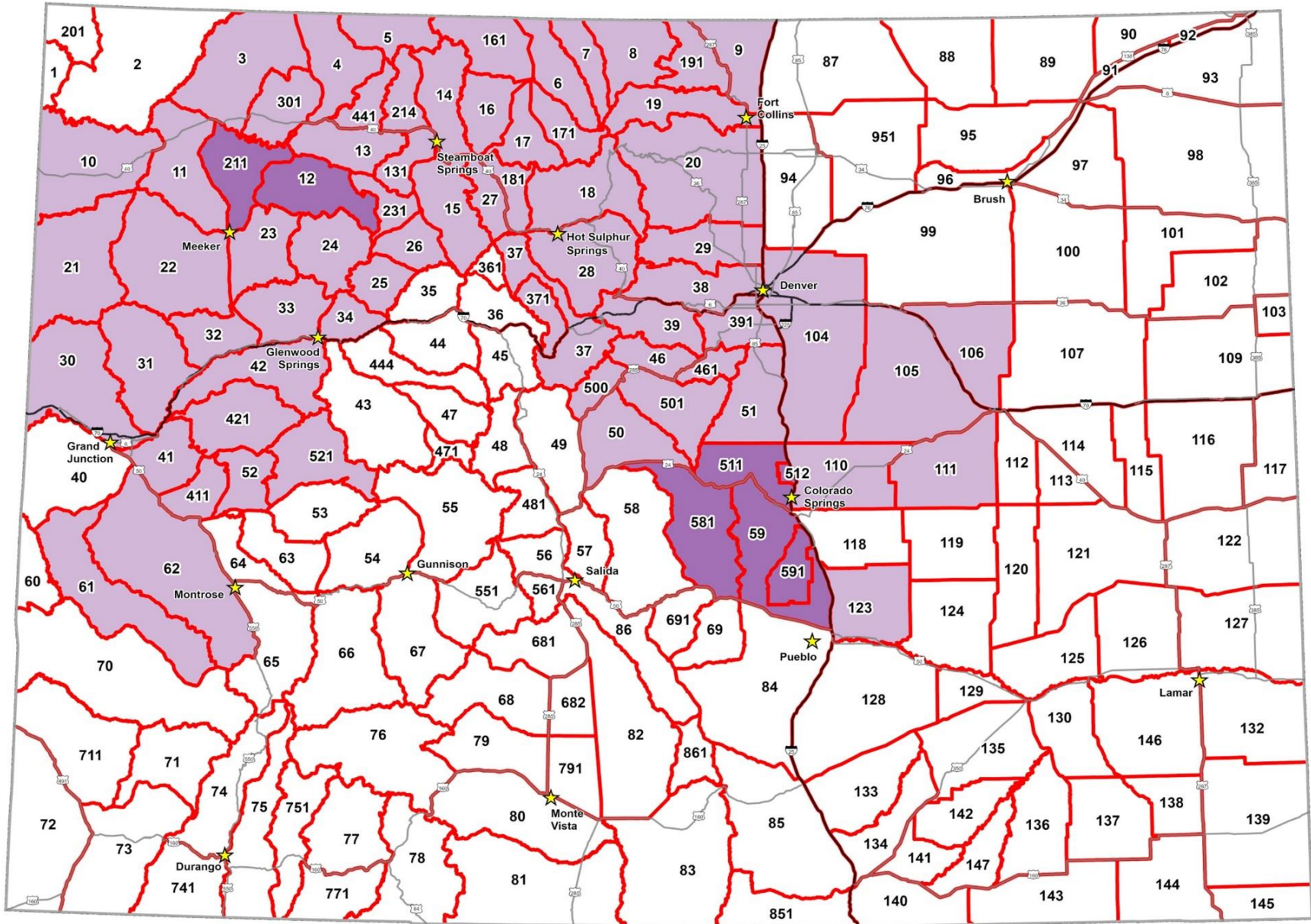
Detected CWD in Harvested Adult Deer Bucks

January 2023



Estimated CWD Infection Rates for Harvest Data in Colorado 2018 - 2022





Detected CWD in Harvested Adult & Yearling Elk

January 2022



**Estimated CWD Infection Rates
for Harvest Data in Colorado
2017 - 2021**

- Not Detected
- Detected under 5%
- Detected 5-10%