

# 2024 Youth Late Pronghorn Hunts



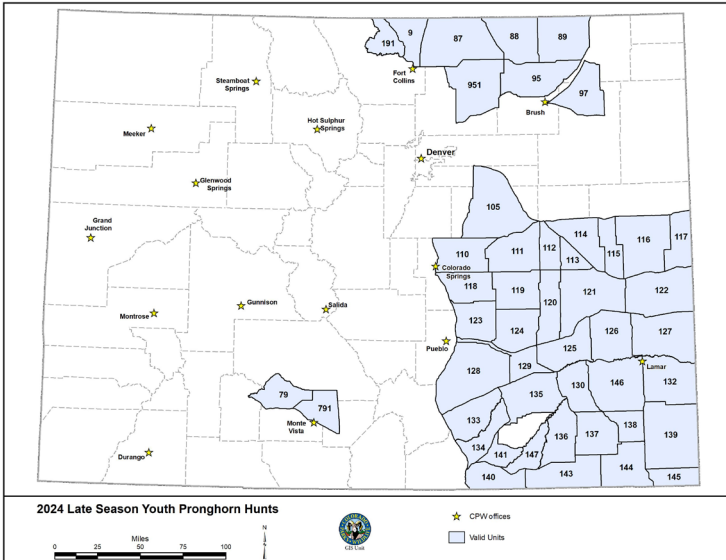
## LIST OF ELIGIBLE HUNTS BY UNIT

Colorado Parks and Wildlife offers youth many opportunities to head into the field to harvest a big-game animal. One of the foremost goals at CPW is to expand youth opportunity and turn first-time hunters into lifelong sportspeople. Offering more chances at success builds the foundation of solid hunting skills and passes down the appreciation of the outdoor lifestyle we cherish.

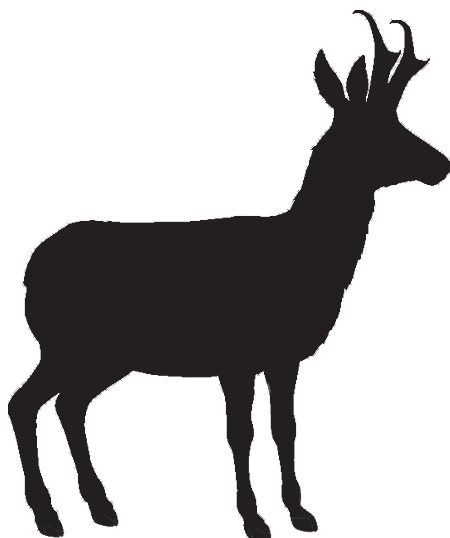
Youths ages 12-17 can participate in any December or January pronghorn doe season if they have an unfilled pronghorn doe or either-sex license for a season that has ended. Licenses must be valid for the current hunting year.

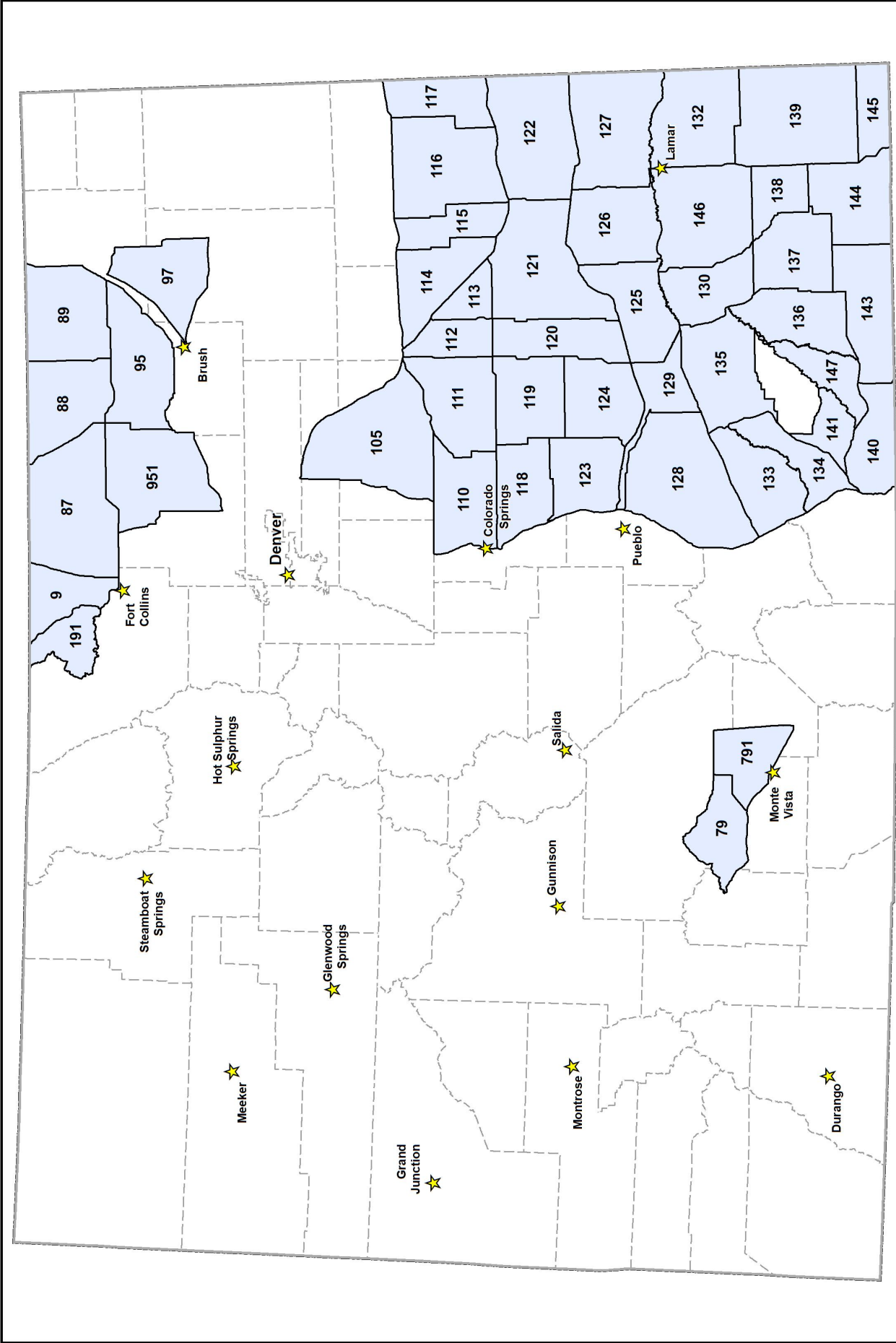
### Youth Late Pronghorn hunting rules:

1. Youth can convert their unfilled limited either-sex pronghorn license (where the season has ended) to a female (antlerless) license through the new Youth Extended Hunt License Conversion Request form online at [cpw.info/youth-hunting](http://cpw.info/youth-hunting), or in person at a CPW location. Doe licenses do not need to be converted; an original license is valid for a late hunt.
2. Youths must comply with all regulations that apply to the December-January season they hunt, including season dates and geographic restrictions. If the unit table indicates a hunt is valid on private land only, youths can hunt only on private land. If the unit tables don't state "private land only," the license is valid on public and private land. Permission is required before hunting on private land.
3. Youths may only hunt during the December or January doe season in the units on the map that are a solid color. Striped or white colored units are closed to the extended youth season hunting. *See the map on the next page for details.*
4. A mentor who meets hunter education requirements must accompany youths 16 and younger.
5. Mentors don't have to hunt, but can do so with the youth only if the mentor's license is valid for the same late season and unit during which the youth will be hunting.
6. Youths who obtained their original license at age 17 and later turn 18 can participate in these late seasons. Youth hunting rules still apply, even though the hunter is 18 while hunting.
7. At age 11, youths can buy or apply for a license if they turn 12 before the end of the season on their original license. Youths cannot hunt with the license until they turn 12.
8. Unfilled buck pronghorn licenses may **NOT** be used to participate in this program.



*View pronghorn map on the next page.*

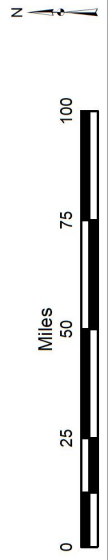




# 2024 Late Season Youth Pronghorn Hunts



- ★ CPW offices
- Valid Units



**ELIGIBLE HUNTS** — Check the 2024 Colorado Big Game Hunting Brochure for hunt and unit specific regulations: [cpw.info/big-game-brochure](http://cpw.info/big-game-brochure)

UNIT I WANT TO HUNT IN EXTENDED YOUTH SEASON	IN THE EXTENDED YOUTH SEASON, I CAN HUNT DOE PRONGHORN HERE AFTER MY ORIGINAL SEASON HAS ENDED	RIFLE YOUTH SEASON DATES
1-8	<i>Cannot hunt in units 1, 2, 3, 4, 5, 6, 7, 8 no Dec. or Jan. rifle doe hunts available</i>	
9 - Landowner permission is advisable before applying. Most land is private.	9, 191	Dec. 1-Jan. 31
10-78	<i>Cannot hunt in units 10, 11, 12, 13, 14, 15, 16, 17, 18, 19, 20, 21, 22, 23, 24, 25, 26, 27, 28, 29, 30, 31, 32, 33, 34, 35, 36, 37, 38, 39, 40, 41, 42, 43, 44, 45, 46, 47, 48, 49, 50, 51, 52, 53, 54, 55, 56, 57, 58, 59, 60, 61, 62, 63, 64, 65, 66, 67, 68, 69, 70, 71, 72, 73, 74, 75, 76, 77, 78 no Dec. or Jan. rifle doe hunts available</i>	
79	79, 791 - private land only	Dec. 1-Dec. 31
80-86	<i>Cannot hunt in units 80, 81, 82, 83, 84, 85, 86 no Dec. or Jan. rifle doe hunts available</i>	
87 - Plains	87 - private land only	Dec. 1-Dec. 31
88 - Plains	88 - private land only	Dec. 1-Dec. 31
89 - Plains	89 - private land only	Dec. 1-Dec. 31
90-94	<i>Cannot hunt in units 90, 91, 92, 93, 84 no Dec. or Jan. rifle doe hunts available</i>	
95 - Plains	95 - private land only	Dec. 1-Dec. 31
96	<i>Cannot hunt in unit 96 no Dec. or Jan. rifle doe hunts available</i>	
97 - Plains	97	Dec. 1-14
98-104	<i>Cannot hunt in units 98, 99, 100, 101, 102, 103, 104 no Dec. or Jan. rifle doe hunts available</i>	
105 - Plains	105	Dec. 1-31
106, 107, 109	<i>Cannot hunt in units 106, 107, 109 no Dec. or Jan. rifle doe hunts available</i>	
110 - Plains	110	Dec. 1-31
111 - Plains	111	Dec. 1-31
112 - Plains	112, 113, 114, 115	Dec. 7-15
113 - Plains	112, 113, 114, 115	Dec. 7-15
114 - Plains	112, 113, 114, 115	Dec. 7-15
115 - Plains	112, 113, 114, 115	Dec. 7-15
116 - Plains	116, 117, 122, 127	Dec. 1-31
117 - Plains	116, 117, 122, 127	Dec. 1-31
118 - Plains	118, 119	Dec. 1-31
119 - Plains	118, 119	Dec. 1-31
120 - Plains	120, 121, 125, 126	Dec. 7-15
120 - Plains	120, 121, 125, 126 - private land only	Dec. 7-15
121 - Plains	120, 121, 125, 126	Dec. 7-15
121 - Plains	120, 121, 125, 126 - private land only	Dec. 7-15
122 - Plains	116, 117, 122, 127	Dec. 1-31

UNIT I WANT TO HUNT IN EXTENDED YOUTH SEASON	IN THE EXTENDED YOUTH SEASON, I CAN HUNT DOE PRONGHORN HERE AFTER MY ORIGINAL SEASON HAS ENDED	RIFLE YOUTH SEASON DATES
123 - Plains	123, 124	Dec. 1-31
124 - Plains	123, 124	Dec. 1-31
125 - Plains	120, 121, 125, 126	Dec. 7-15
	120, 121, 125, 126 - <i>private land only</i>	Dec. 7-15
126 - Plains	120, 121, 125, 126	Dec. 7-15
	120, 121, 125, 126 - <i>private land only</i>	Dec. 7-15
127 - Plains	116, 117, 122, 127	Dec. 1-31
128 - Plains <i>Landowner permission is advisable before purchasing. Most land is private.</i>	128, 129, 135 - <i>private land only</i>	Dec. 7-11
129 - Plains <i>Landowner permission is advisable before purchasing. Most land is private.</i>	128, 129, 135 - <i>private land only</i>	Dec. 7-11
130 - Plains	130, 146	Dec. 1-31
	130, 146 - <i>private land only</i>	Dec. 1-31
131	<i>Cannot hunt in unit 131 no Dec. or Jan. rifle doe hunts available</i>	
132 - Plains	132, 139, 145 - <i>private land only</i>	Dec. 1-31
133 - Plains <i>Landowner permission is advisable before purchasing. Most land is private.</i>	133, 134, 140, 141, 147 - <i>private land only</i>	Dec. 7-11
134 - Plains <i>Landowner permission is advisable before purchasing. Most land is private.</i>	133, 134, 140, 141, 147 - <i>private land only</i>	Dec. 7-11
135 - Plains <i>Landowner permission is advisable before purchasing. Most land is private.</i>	128, 129, 135 - <i>private land only</i>	Dec. 7-11
136 - Plains	136, 143	Dec. 1-31
	136, 143 - <i>private land only</i>	Dec. 1-31
137 - Plains	137, 138, 144	Dec. 1-31
	137, 138, 144 - <i>private land only</i>	Dec. 1-31
138 - Plains	137, 138, 144	Dec. 1-31
	137, 138, 144 - <i>private land only</i>	Dec. 1-31
139 - Plains	132, 139, 145 - <i>private land only</i>	Dec. 1-31

UNIT I WANT TO HUNT IN EXTENDED YOUTH SEASON	IN THE EXTENDED YOUTH SEASON, I CAN HUNT DOE PRONGHORN HERE AFTER MY ORIGINAL SEASON HAS ENDED	RIFLE YOUTH SEASON DATES
140 - Plains <i>Landowner permission is advisable before purchasing. Most land is private.</i>	133, 134, 140, 141, 147 - private land only	Dec. 7-11
141 - Plains <i>Landowner permission is advisable before purchasing. Most land is private.</i>	133, 134, 140, 141, 147 - private land only	Dec. 7-11
142	<i>Cannot hunt in units 142 no Dec. or Jan. rifle doe hunts available</i>	
143 - Plains	136, 143	Dec. 1-31
	136, 143 - private land only	Dec. 1-31
144 - Plains	137, 138, 144	Dec. 1-31
	137, 138, 144 - private land only	Dec. 1-31
145 - Plains	132, 139, 145 - private land only	Dec. 1-31
146 - Plains	130, 146	Dec. 1-31
	130, 146 - private land only	Dec. 1-31
147 - Plains <i>Landowner permission is advisable before purchasing. Most land is private.</i>	133, 134, 140, 141, 147 - private land only	Dec. 7-11
161, 171, 181	<i>Cannot hunt in units 161, 171, 181 no Dec. or Jan. rifle doe hunts available</i>	
191 - Landowner permission is advisable before applying. <i>Most land is private.</i>	9, 191	Dec. 1-Jan. 31
201-771	<i>Cannot hunt in units 201, 211, 214, 231, 301, 361, 371, 391, 411, 421, 441, 444, 461, 471, 481, 500, 501, 511, 512, 521, 551, 561, 581, 591, 681, 682, 691, 711, 741, 751, 771 no Dec. or Jan. rifle doe hunts available</i>	
791	79, 791 - private land only	Dec. 1-Dec. 31
851, 861	<i>Cannot hunt in units 851, 861 no Dec. or Jan. rifle doe hunts available</i>	
951 - Plains	951 - private land only	Dec. 1-Dec. 31