


Where to look for toads...



Kevin Rogers
Aquatic Research
Colorado Division of Wildlife

Beaver pond complexes are key...



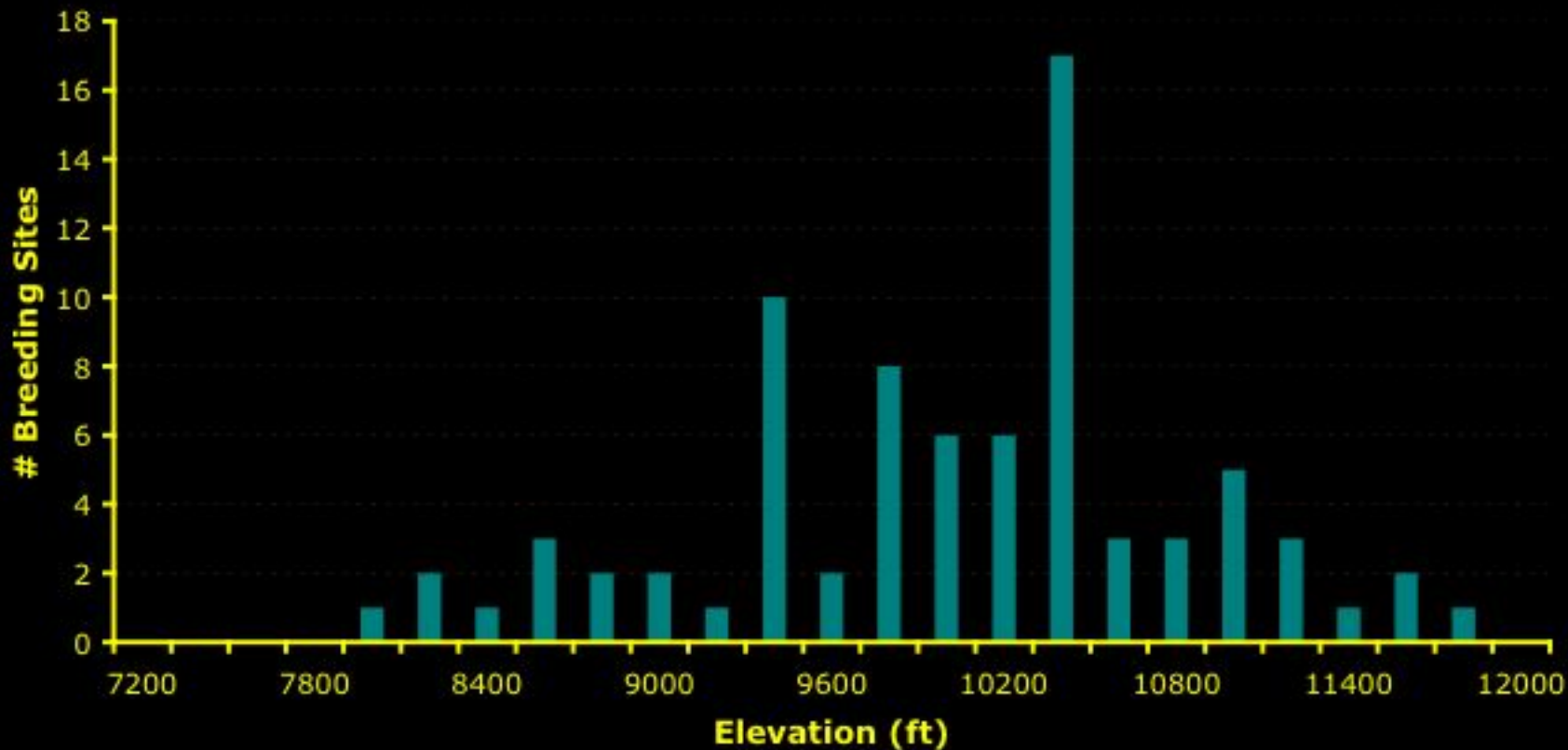


**Especially blown out ones with dark bottoms
that collect a lot of the suns energy...**

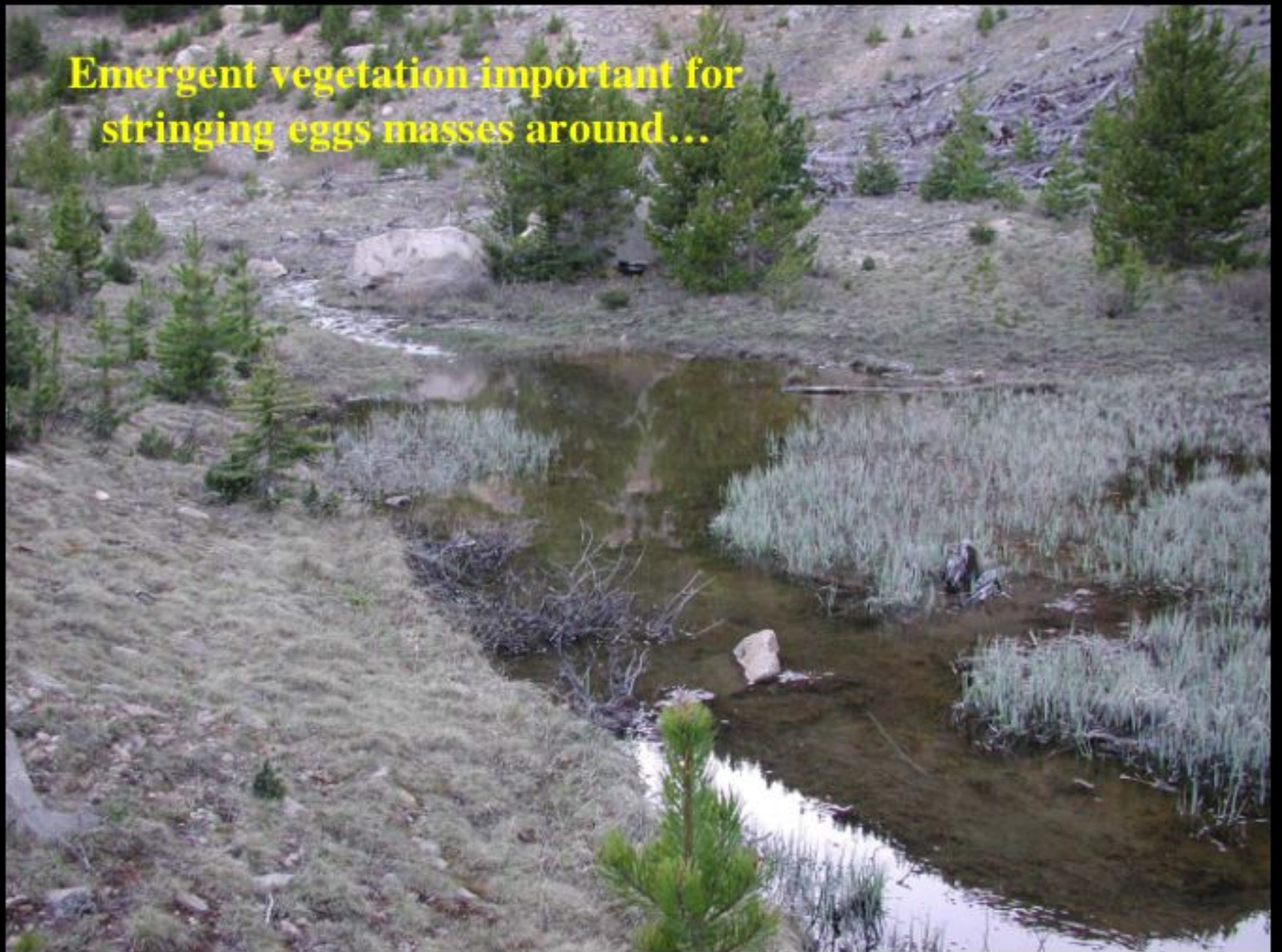
More breeding sites...



Breeding Site Elevations



Emergent vegetation important for stringing eggs masses around...





Boreal toad eggs in single strand and jet black...



**Unfertilized eggs die and fungus up -
turn bright white - very visible**





**Tadpoles just emerged from egg matrix -
don't move much**



Tadpoles in July - generally black; eyes do not protrude from body profile



Eyes on chorus frog tadpole (left) protrude from body

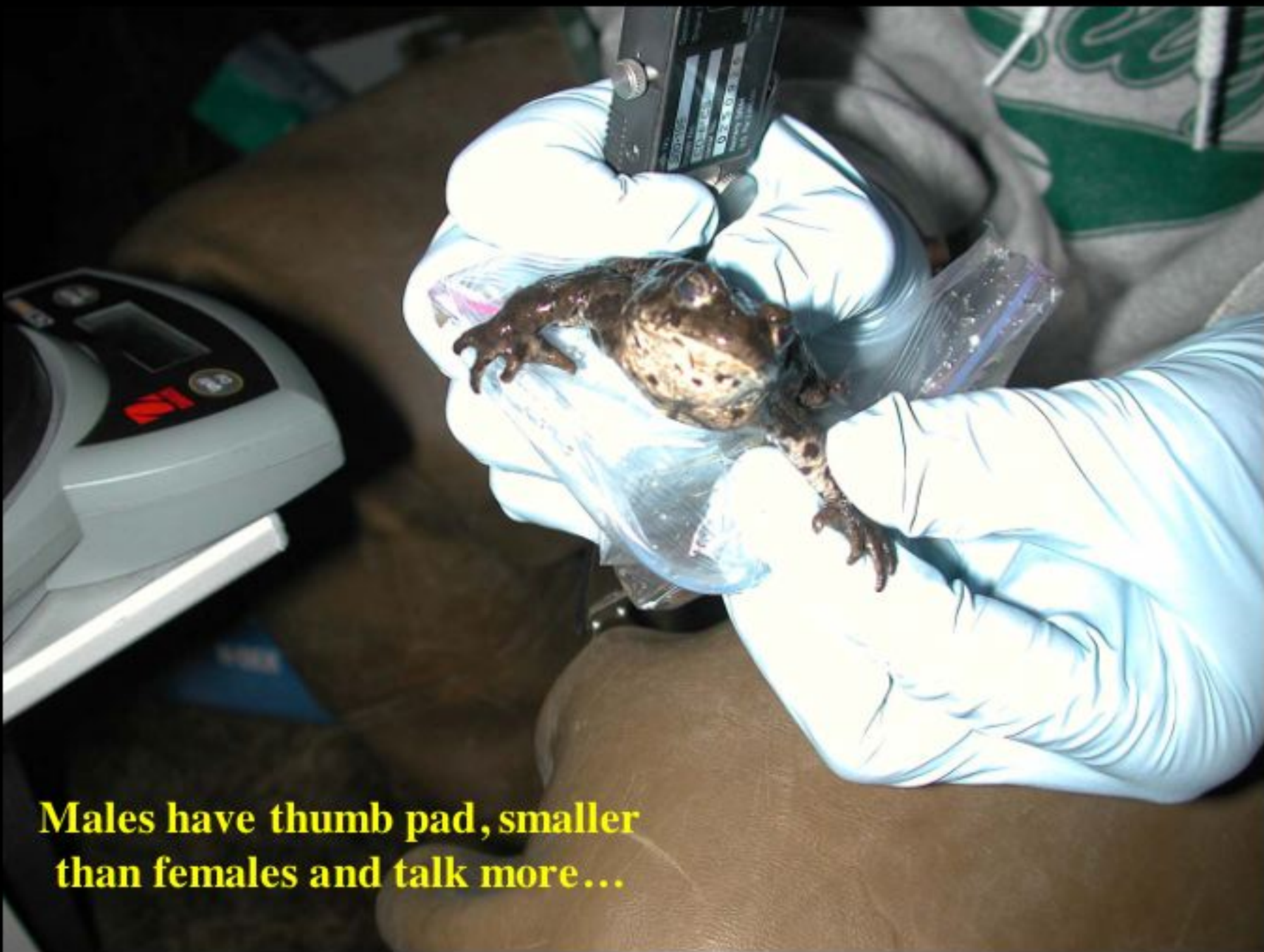


Night surveys productive during breeding season - look for eye shine



Use individual ziplock bags for weighing and measuring - avoid spreading chytrid Bd





Males have thumb pad, smaller than females and talk more...

Good luck...

