

Application form



NON-MOTORIZED TRAILS GRANT APPLICATION - CONSTRUCTION

PROJECT BASICS

Title WRV Partnership for Trail Stewardship 2024

Type Construction Planning
 Maintenance Support

Phased project Yes No If yes, Phase # of

Brief summary

WRV will mobilize its extensive volunteer community to help with new trail construction on three different National Forests in Colorado during our 2024 and 2025 project seasons.

Grant request	\$ 192,191.90	Grant ratio ¹	30 %
Match	\$ 434,265.60	Match ratio	70 %
Total	\$ 626,457.50	Total	100 %

APPLICANT

Type Local County Federal Tribal
 Recreation and Metro Districts Non-Profit

Organization Wildlands Restoration Volunteers

Postal address 2100 Collyer St

City Longmont State CO ZIP Code 80501

General email info@wlrv.org UEI #

Lead contact Sarah Egolf-Tarr Title Director of Development

Telephone 303-543-1411 x 108 Email sarah@wlrv.org

Project manager Nate Boschmann Title Trails Program Manager

Telephone 970-389-5746 Email nate@wlrv.org

PARTNER OR CO-SPONSOR

Organization N/A

Postal address

City State CO ZIP Code

Contact name Title

Telephone Email

¹ Grant ratio = grant request / total. Match ratio = match / total.

PROPERTY

Nearest town or city Longmont, Silverthorne, Fairplay County Boulder, Summit, Park

Latitude/Longitude see maps sheet Congressional district 2 & 5

Name of property owner United States Forest Service

Trail Corridor controlled by Fee simple Lease Easement

License ROW Other:

TRAIL

Uses Hiking, walking, running Biking Equestrian

E-bikes allowed? Yes No Snow sports (non-motorized) ADA Accessible

Other:

Estimate percentage by type (e.g.,) 50% hiking, etc. 80% Hiking, 10% biking, 10% winter

Surface Natural Crusher fines Asphalt Concrete

Other: boardwalk and bridge

Size of new trailhead (sq. ft.)	0	Length of trail being planned	0
Length of new trail construction ²	6.5	Length of trail maintenance	0
Length of inter-connecting trail	700	Length of trail reroute	0
Length of decommissioned trail	3.8	Length of restored trail	3.8
Length of trail to be signed	0	Length of trail grooming	0


Other: Bridges constructed - 3

Estimated amount of paid crew hours: Grant 400 Match:

ACKNOWLEDGEMENT

On behalf of the applicant entity, I certify to the best of my knowledge that the information in this application is true and correct.

Authorized Representative

Signature   Digitally signed by Nathan Boschmann
Date: 2023.10.03 17:22:36 -06'00' Date 10/03/2023

Name Nathan Boschmann Title Trails Program Manager

² Length of trail – use miles, square feet, linear feet



Heal the Land
Build Community

State Trails Program
Attn: Fletcher Jacobs
13787 S Hwy 85
Littleton, CO 80125

8/17/2023

Mr. Jacobs and the Trail Grant Committee:

Wildlands Restoration Volunteers' (WRV) Board of Directors hereby resolves to support two grant requests from CPW's Non-Motorized Trail Program. The Support Grant proposal will not exceed \$45,000 and the Trail Construction or Maintenance Grant proposal will not exceed \$250,000.

Volunteers are an essential component in the construction and maintenance of trails in Colorado. WRV has a proven history of designing, planning, and implementing sustainable trail projects with diverse partners and land management agencies. These grant requests are essential so WRV can implement priority trail work on lands owned by the public. We stand prepared to complete these projects if awarded, including all required reporting.

WRV's mission is to build diverse communities that care for the land. Since 1999, demand for our services has grown due to fires, floods, weed infestations, beetle outbreaks, and more that have affected lands and trails. WRV partners with many agencies on trail projects each year. But, our agency partners are still overwhelmed with a backlog of deferred trail maintenance. We are deeply thankful to the State Trails Program for making much of this work possible. By funding these requests, CPW will make a crucial investment in helping multiple agency partners with needs for sustainable trail connections and serves many recreational groups from residents to tourists. On behalf of WRV's Board of Directors, I urge you to fully fund these proposals. If you have any questions, please do not hesitate to reach out to me at aericksonlang@gmail.com.

Sincerely,

A handwritten signature in cursive script that reads "Ann Erickson Lang".

Ann Erickson Lang
Board Chair

Timeline

NON-MOTORIZED TRAILS GRANT APPLICATION



PROJECT DETAILS

Organization Wildlands Restoration Volunteers

Project title WRV Partnership for Trail Stewardship 2024

TASK <small>Mobilization, staffing, construction or maintenance elements, planning phases, etc.</small>	Dates*	Dates	Dates	Dates	Dates	Dates	Dates
	7-9/2024	10-12/2024	1-3/2025	4-6/2025	7-9/2025	10-12/2025	1-6/2026
Primary Design and Funding	2022						
Staffing and Leadership	<X		X				X
Initial Site Visits	<X			X			
Final Design	X			X			X
Materials Acquisition	X		X				X
Machine work		X				X	
Volunteer Projects	X			X	X		X
Youth Corps Projects	X			X	X		X
Admin	<X	X	X				X
Grand opening						X	X
Administrative Close-out							X

*The timeline is an estimate of your project completion. Remember the project must be completed within 2.5 years of the award date. [Suggestion - use quarterly or multiple month time frames \[Q2/XX; Jun-Sept XX\]](#). Initial grant expiration date will be June 30th or December 31st, dependent upon assigned funding source.

Criteria Questions



NON-MOTORIZED TRAILS GRANT APPLICATION - CONSTRUCTION

Organization Wildlands Restoration Volunteers

Project title WRV Partnership for Trail Stewardship 2024

1. PROJECT NEED

15 points

- A. Give a detailed description of the project, including information such as miles of new or resurfaced trails, any other trail components/structures, and the restoration/decommission of old reroutes.

Crooked/Trout - WRV will work with the South Park RD on the Pike-San Isabel NF to develop a 4.5-mileX18"-natural surface trail connection with one bridge connecting Beaver Creek Trailhead to the Summit County area trail system via Gold Dust Trail over Boreas Pass.

Brainard Lake - WRV will work with the Boulder RD on the Arapaho-Roosevelt NF to construct a new ¾-mileX60" accessible crusher fines connector trail with one bridge on the south side of Brainard Lake connecting the camping and overflow parking areas to the wilderness trailheads.

Buffalo/Willow - WRV will work with the Dillon RD on the White River NF to build a new one-mile natural surface trail connector and bridge to replace a popular but unmanageable access trail from Silverthorne to the Gore Range Trail in the Eagles Nest Wilderness.

300+ volunteers, 5,000 volunteer hours, valued at over \$160K, six weeks Youth Corps

- B. Describe the project's urgency and why it is being pursued at this time.

Crooked/Trout – The 2021 PSINF TMP mandates the SPRD close the access roads that we'll need to complete the construction. With so much sensitive habitat in the area, we have a limited opportunity to provide sustainable direction for future access.

Brainard Lake - This project is long overdue, but unsafe conditions on the busy wilderness trails nearby were prioritized. Now we need to improve safety and accessibility at Brainard Lake.

Buffalo/Willow - The existing trail is rarely passable and when it is, it's dangerous, invades wetland and riparian habitat, and encourages resource damage. It either needs to be rebuilt or closed and rerouted. Losing this connection is not a viable option.

- C. Describe all existing trails/trail systems in the area and the need for additional trail reroutes to be constructed.

Crooked/Trout - We've been working to improve the small trail system around Fairplay which is still connected to the larger Breckenridge system by a mix of trails and unsustainable roads that are soon to be decommissioned

Brainard Lake - Wilderness trails out of Brainard Lake Rec. Area are some of the busiest in the nation. Other than some sidewalks in the parking and camping areas there are no accessible trails at Brainard. Many use the busy narrow roads to see more of this beautiful landscape.

Buffalo/Willow - This connector is the only access to the Eagles Nest wilderness with a bus stop at the trailhead. The existing trail making the connection is beyond repair.

2. COMMUNITY BENEFIT

15 points

- A. Describe the community that will benefit from this project. Include relevant demographic and economic data.

Crooked/Trout - Residents of Fairplay and Como. These mountain communities are increasingly benefitting from tourism in nearby Summit County. Many residents emigrate from outside the US for nearby seasonal work opportunities to support family at home.

Brainard Lake - Residents and visitors to all enjoy this popular Front Range access to the Indian Peaks Wilderness. Nearby towns of Ward and Nederland benefit.

Buffalo/Willow - Residents of Silverthorne and Dillon, mountain towns in Summit County are reliant on tourism to support their economies. Some residents work seasonal jobs to support their outdoor lifestyle.

- B. Outline any deficiencies or barriers to access that this project would address or improve for the abovementioned community.

Crooked/Trout - A dedicated trail connection with the recreation center of Summit County would increase visitation to Fairplay’s restaurants, lodging, and cultural offerings (its largest industry). With the decommissioning of two roads in the area, connection to popular recreation and hunting terrain would otherwise be lost.

Brainard Lake - This new trail will provide access to visitors who use wheelchairs to enjoy Brainard Lake and the natural beauty of the Indian Peaks Wilderness. Currently, many parts of the recreation area can only be accessed with social trails or by sharing narrow roads with vehicle traffic.

Buffalo/Willow - Without a sustainable realignment, this failing connection will be lost, focusing traffic destined for the Gore Range Trail or popular Willow Falls on a few less accessible and already overcrowded neighborhood trailheads.

- C. Estimate the number of people and/or types of user groups that will have access to recreational opportunities as a result of this project. Include methods for determining this estimate.

Crooked/Trout

- Mountain Bikers will likely be the biggest user group
- Hunters will use this trail now that road access is gone
- Hikers and Trail runners

Brainard Lake

- 3,000+ Campers at the Brainard Lake Campground
- Visitors who use mobility aids such as wheelchairs
- 100s of daily visitors who arrive after the 300 trailhead parking spots are full

Buffalo/Willow

- Residents and visitors to Summit County, especially those without vehicles
- Outdoor recreationists without vehicles (easy bus access to trailhead)

3. PROJECT MANAGEMENT

10 points

- A. Give a detailed description of who will oversee the design process and trail construction. Include who will build the trail (staff, volunteers, conservation corps, contractors, etc.)

Wildlands Restoration Volunteers staff will be lead on design and oversee construction with final approval from Ranger District staff.

Crooked/Trout

The USFS will clear the corridor with chainsaws. Some basic tread will be constructed by a professional contractor, and some by a local volunteer with a trail dozer supported by youth corps. The steeper cross slopes and more technical builds across the talus will be done by hand with volunteers. Bridges will be installed by USFS staff.

Brainard Lake

A contractor will clear the corridor, install the bridge, prepare the initial bench and install culverts with a backhoe. Volunteers will use the organic materials generated to close and restore the many social trails and lay out the geocell. The contractor will then fill the geocell with crusher fines.

Buffalo/Willow

All construction will be done by volunteers and Youth Corps supervised by WRV staff. WRV crosscut sawyers will fell trees and clear the corridor followed by youth corps who will remove stumps and construct basic tread. WRV volunteers will finish it off with any technical structures and bridge construction.

- B. Outline any CPW State Trails funding received in the last five years and if the project(s) were completed on time, on budget and within scope. For applicants without prior State Trails funding, provide examples of similar grant funded projects. Include project title, year of award, grant amount, and grantor for each.

2023, Maintenance 23TC (in process and will be finished on schedule)

2022, Maintenance 22TI (is 90% complete)

2021, Support, 21TK Training Leadership Outreach Tools

2021, Maintenance, RTN2105-21TA WRV Partnership for Trail Stewardship 2021(completed with extension)

2020, Maintenance, TRLG 20TF WRV Partnership for Trail Stewardship 2020-2022 (Completed with extension)

2019, Large Construction, 19TC WRV Partnership for Trail Stewardship 2019-2021

2019, Support, 19-TRLG-129111 RTN1808 Training Tools and Leaders

4. PLANNING

10 points

- A. Discuss the process that identified this construction project as a priority.

Crooked/Trout.

This scope was originally suggested by the District Ranger on the South Park RD. The first iteration involved converting existing roads to trails. After some scouting and design visits it was clear that the roads and some of the existing trails were problematic from both a sustainability and wildlife standpoint so we suggested a completely new trail alignment. After the Forest TMP was completed it was determined the roads were no longer an option for either vehicles or foot traffic.

Brainard Lake

This scope has been a priority for the Brainard Lake Recreation area for some time, but there were public safety and resource damage issues on nearby trails that took precedence. Accessibility is the next priority and WRV is ready to help.

Buffalo/Willow

The Ranger District originally sought our help to do some maintenance on the existing trail because it was becoming dangerous. After the first site visit we suggested that putting more resources into a dangerous and unsustainable trail wasn't a good fit for our organization and that we'd be willing to help with a new trail instead. We've worked together to design a new trail.

- B. List all approved internal master or outdoor recreation plans and/or any external area, regional, or statewide plans this project supports.

Crooked/Trout

This new trail is part of the 2022 approved Travel Management Plan for the Pike/San Isabel NF <https://www.fs.usda.gov/project/psicc/?project=48214> and permitted under a 2023 trails CE

Brainard Lake

The project will directly meet goals and desired future conditions set forth in the Forest Recreation Area Management Plan and 2005 BLRA/EA. <https://www.fs.usda.gov/project/arp/?project=3524>

Buffalo/Willow

A system trail connection exists between the Buffalo Mountain trailhead and Gore Range trail but it has become unsafe and unmanageable. This project will maintain that connection that was approved in the 2022 TMP.

TMP - <https://www.fs.usda.gov/project/whiteriver/?project=1103>

EA - <https://www.fs.usda.gov/project/whiteriver/?project=62644>

5. MAINTENANCE AND SUSTAINABILITY**10 points**

- A. Explain how the site will be maintained and monitored (maintenance plans, estimated cost, and future budgeting commitments, etc.) after construction.

Crooked/Trout

Replacing fall-line roads along creeks with a well-drained trail will dramatically reduce the overall maintenance burden for the South Park Ranger District. Local groups such as Mosquito Range Natural Heritage Initiative and Human Potential will continue to help with trail maintenance.

Brainard Lake

The USFS will monitor and perform long-term maintenance of the new trail. Local volunteer groups such as Indian Peaks Wilderness Alliance will continue to assist with maintenance efforts. This new infrastructure will necessitate a greater maintenance burden, but with the inclusion of stabilization mechanisms and more durable materials State Trails can help to fund, this burden will be minimized in the long term.

Buffalo/Willow

Local volunteer groups, Friends of the Dillon Ranger District (FDRD) and Eagle Summit Wilderness Alliance (ESWA) will help with ongoing maintenance. WRV and Youth Corps crosscut sawyers will continue to remove deadfall and keep the trail accessible.

- B. Describe the best management practices that will be used to construct the trail to ensure that the trail and its amenities will be sustainable.

WRV's mission is building diverse communities that care for the land. The staff and volunteers of our trails community approach our trail work from the same perspective as with any other restoration project: the primary goal is to restore and mitigate future impacts of increasing human presence in the landscape. Short of barring access to wild spaces, a well-built and maintained trail system that invites users to remain on durable surfaces and enjoy the beauty of more sensitive habitat areas from a less-intrusive distance is an essential component in the stewardship of public lands.

The final design of new trails will include alignments with sustainable grades that work with the landscape to keep water off of the trail and in existing drainage features. We seek well-drained cross slopes, avoid sensitive habitats, and minimize the number and impacts of water crossings. During construction, we minimize impacts to the surrounding vegetation by only walking on the intended new tread and keeping the downslope clean. Spoils are either used for restoration or trail structures, or distributed far away from the new tread to avoid burying existing native vegetation and encouraging the proliferation of invasives.

These projects improve a part of the existing statewide trail system, and both enhance recreation while protecting and/or restoring habitat. Our reroutes and maintenance work create more sustainable, well-drained trail alignments, which better meet the needs of multiple user groups while reducing erosion, protecting rare species and sensitive habitats, and supporting growing tourism, which bolsters local economies.

6. WILDLIFE AND NATURAL RESOURCES**15 points**

- A. Describe how potential impacts to wildlife and natural resources were evaluated during the project scoping phase (using 'Planning Trails with Wildlife in Mind', mapping tools, etc.). Include any positive impacts this work will showcase.

We are a restoration organization that designs and builds trails with a restoration ethic. Our lead trail designer participated in developing the most recent version of "Planning Trails with Wildlife in Mind." We assess the viability of the project by looking both at the terrain and habitats. By overlaying CPW wildlife layers onto our design maps we start ruling out potentially harmful lines early. We talk with land management agency representatives and CPW area Managers about their concerns. Then, once we're in the field laying out the corridor, we keep an eye out for wildlife resources like open meadows, riparian areas, wetlands, springs, and wallows and include them in the negative control points to avoid, and areas out of sightlines from those resources as positive control points for our final corridor.

- B. Describe any wildlife and natural resources issues raised by CPW staff during the application consultation.

Crooked/Trout - We worked closely with the former area wildlife manager to address his concerns about the struggling herd of sheep on Silverheels Mountain. We were able to find a solution that involved closing some existing trails that intruded further into their range and impacted their resources to balance the need for access.

Brainard Lake - We haven't gotten any feedback on the access trail but we've been working at and around Brainard Lake since 2014. The recreation area has 100s of visitors every day and the Lake is right at the center of it all. Wildlife that make it their home are accustomed to a human presence here.

Buffalo/Willow - We also haven't received feedback on this project, but expect a dramatic reduction in wildlife conflicts with the new trail.

- C. Explain how potential wildlife and natural resource impacts will be avoided, minimized, and/or mitigated (trail realignment, seasonal closures (include dates), signage, gates, game cameras, etc.)

Crooked/Trout - In addition to the closure of the Crooked Creek Road and trail that extend high into the headwaters of Crooked Creek, the new trail will be closed to bike traffic during the early part of the season. Construction activities will also be limited to dates after July 1 to limit wildlife conflicts.

Brainard Lake - By concentrating traffic from the many social trails that crisscross the banks onto one well-defined trail we expect to reduce wildlife conflicts at Brainard Lake.

Buffalo/Willow - The old trail crosses South Willow Creek and its spring-fed tributaries three times and crosses multiple wetland habitats. The new trail takes a higher and drier line above the springs and only requires one crossing which will be bridged.

7. PUBLIC ENGAGEMENT & PARTNERSHIPS

15 points

- A. Outline public engagement activities for this project (public meetings, comment periods, surveys, etc.)

Public involvement in these trails has mostly already occurred through USFS Resource Management Planning and Travel Management Planning (TMP) and the NEPA process. The design work planned on these trails is within the framework of existing Resource Management Plans (RMPs) from each of the USFS Ranger Districts with which we are partnering. The process of revising RMPs and TMPs involves extensive public comment processes.

Engaging the public in the form of volunteers is at the heart of our mission at Wildlands Restoration Volunteers. While some of the implementation most efficiently done with machinery will be done by contractors, any activities best done by hand including corridor clearing, tread construction and wilderness bridge building will be done by WRVs skilled community of volunteers and those of our partners.

- B. Describe any partnerships that will ensure the project’s success (public agencies, conservation or recreation groups, local businesses, etc.)

We've learned that trail design should always be a collaborative process. WRV begins with proposals from land management agencies and determines which of them are consistent with our mission. Then, we connect with local stakeholder groups to find opportunities to share resources and expertise.

Crooked/Trout - PSINF South Park Ranger District, South Park Natural Heritage Area, Mosquito Range Heritage Initiative, Rocky Mountain Youth Corps, Human Potential

Brainard Lake - ARNF Boulder Ranger District, Indian Peaks Wilderness Alliance, No Barriers

Buffalo/Willow - WRNF Dillon Ranger District, Eagle Summit Wilderness Alliance, Friends of the Dillon Ranger District, Rocky Mountain Youth Corps

- C. Describe how potential opposition to this project or its implementation will be identified, addressed and managed.

Changes to infrastructure on public lands rarely occur without some opposition. Adjacent landowners often feel encroached upon when new trails are opened near their property line, restored trails and roads cut off convenient access to someone's favorite campsite or fishing area, and mountain bikers miss the challenge or thrill of traversing unsustainable trail grades. We seek to involve representatives of potentially affected communities from the initial design phases all the way through the final construction of a new or realigned trail. No trail will please everyone, but representation facilitates a greater tolerance for the compromises that often have to be made.

8. BUDGET AND FUNDING

10 points

- A. Describe the source of match for the project and when it will be secured. Include in-kind donations and partner contributions.

Crooked/Trout

Cash match is secured and comes from a Park County Title II RAC allocation.

In-kind match comes from WRV volunteer time, USFS employee time and donated machine and operator time from Human Potential.

Brainard Lake

Cash match is secured and comes from USFS funds.

In-kind match comes from WRV volunteer time and USFS employee time.

Buffalo/Willow

Cash match is secured and comes from an NFF SCF grant.

In-kind match comes from WRV volunteer time, Youth Corps and USFS employee time.

- B. Describe any consequences if this funding application is unsuccessful (loss of partner funds, staff capacity, expiration of surveys, etc.).

Crooked/Trout

Without CPW funding this project would be stalled entirely or would proceed too slowly to complete the new trail before the roads that are logistically essential for trail construction have to be decommissioned. The Crooked Creek trail would continue to encroach on sheep habitat and visitors would continue to attempt access on closed unsustainable roads.

Brainard Lake

There is some existing federal funding but very limited staff capacity on the Boulder Ranger District. Without WRV staff to oversee the contractors and volunteers to do a complete restoration of the social trail network it is replacing, it likely won't get done in the near future. Without adequate funds to incorporate durable construction materials to ensure continued accessibility to those using wheelchairs, long-term maintenance costs will increase.

Buffalo/Willow

While the DRD does have funds allocated to materials and Youth Corps for this project, they don't have the staff capacity to supervise them. Without adequate mentorship from experienced trail-builders Youth Corps are not capable of completing this project. CPW funds will pay for staff with the needed experience and support WRV volunteers with crosscut faller capacity to clear the corridor and the expertise to construct wilderness bridges.

Federal Environmental Form and Land Manager Approval
Only to be completed if all or part of the project is located on federal land

The applicant is responsible for securing all necessary permits, licenses, clearances, SHPO, and environmental analysis documentation necessary to comply with local, state, and/or federal laws.

Project
Name

Crooked Trout Trail

Project
Sponsor

Pike and San Isabel National Forests; Comanche and Cimarron National Grasslands.

As the official responsible for management of the land on which the project will be accomplished, I agree to the following:

1. The project as described in this application has my approval.
2. The project is located on federal public lands and is in conformance with the appropriate Forest Management Plan, BLM Resource Area Management Plan or other decision document.

Title of document: Land and Resource Management Plan; Pike and San Isabel National Forests; Comanche and Cimarron National Grasslands.

Date of document: 1984

3. A decision has been issued as part of the NEPA environmental review process.

Title of document: Beaver Creek, Gold Dust Connector Trail Categorical Exclusion

Date of document: 9/29/23

If a decision has not been issued as part of the NEPA environmental review process, please state the reason why. No funds will be distributed until any required NEPA documentation is completed.

For more information about the NEPA environmental review process, contact:

South Park Ranger District

Name: Alixandra Jensen

Phone number: 970-391-5375

Email: alixandra.jensen@usda.gov

4. The next planning process that may affect this project is planned for _____.

Land Manager's Name: Joshua Voorhis

Land Manager's Title: District Ranger

Land Manager's Signature: _____

JOSHUA VOORHIS Digitally signed by JOSHUA VOORHIS
Date: 2023.09.29 12:22:40 -06'00'

Federal Environmental Form and Land Manager Approval
Only to be completed if all or part of the project is located on federal land

The applicant is responsible for securing all necessary permits, licenses, clearances, SHPO, and environmental analysis documentation necessary to comply with local, state, and/or federal laws.

Project Name Brainard Lake Area Connector Trail

Project Sponsor Arapaho and Roosevelt National Forests and Pawnee National Grassland

As the official responsible for management of the land on which the project will be accomplished, I agree to the following:

1. The project as described in this application has my approval.

2. The project is located on federal public lands and is in conformance with the appropriate Forest Management Plan, BLM Resource Area Management Plan or other decision document.

Title of document: 1997 Revision of the Land and Resource Management Plan

Date of document: 1997

3. A decision has been issued as part of the NEPA environmental review process.

Title of document: BLRA Development/Management Projects: DN and FONSI: December 2005

Date of document: December 2005

If a decision has not been issued as part of the NEPA environmental review process, please state the reason why. No funds will be distributed until any required NEPA documentation is completed.

For more information about the NEPA environmental review process, contact:

Name: Matt Henry

Phone number: 720-576-9232

Email: matthew.henry@usda.gov

4. The next planning process that may affect this project is planned for _____.

Land Manager's Name: Rebecca Stokes

Land Manager's Title Deputy District Ranger

Land Manager's Signature:

REBECCA STOKES Digitally signed by REBECCA STOKES
Date: 2023.10.03 09:30:40 -06'00'

Federal Environmental Form and Land Manager Approval
Only to be completed if all or part of the project is located on federal land

The applicant is responsible for securing all necessary permits, licenses, clearances, SHPO, and environmental analysis documentation necessary to comply with local, state, and/or federal laws.

Project Name BUFFALO WILLOW CONNECT TRAIL

Project Sponsor U.S. FOREST SERVICE - WHITE RIVER N.F. DILLON R.D.

As the official responsible for management of the land on which the project will be accomplished, I agree to the following:

1. The project as described in this application has my approval.
2. The project is located on federal public lands and is in conformance with the appropriate Forest Management Plan, BLM Resource Area Management Plan or other decision document.

Title of document: White River National Forest Land and Resource Management Plan; 2002 Revision

Date of document: 2002

3. A decision has been issued as part of the NEPA environmental review process.

Title of document: BUFFALO SOUTH WILLOW CATEGORICAL EXCLUSION DECISION MEMO

Date of document: 10-6-23

If a decision has not been issued as part of the NEPA environmental review process, please state the reason why. No funds will be distributed until any required NEPA documentation is completed.

For more information about the NEPA environmental review process, contact:

Name: TYLER KIRKPATRICK

Phone number: 970-376-4317

Email: TYLER.KIRKPATRICK@USDA.GOV

4. The next planning process that may affect this project is planned for N/A.

Land Manager's Name: ADAM BIANCHI - DISTRICT RANGER

Land Manager's Title

Land Manager's Signature: 



Multi-project Budget Summary

NON-MOTORIZED TRAILS GRANT

CPW Grant #			
Organization			
Project title			
	CPW Trails Grant Request	Total project match	Total Funding
Link to 1st project site	\$110,012.00	\$179,152.00	\$289,164.00
Link to 2nd project site	\$62,091.00	\$179,422.00	\$241,513.00
Link to 3rd project site	\$20,088.90	\$75,691.60	\$95,780.50
TOTAL	\$192,191.90	\$434,265.60	\$626,457.50

Crooked Trout Connector Trail , South Park RD, Pike-San Isabel NF
 Brainard Lake Accessible Connector Trail, Boulder RD, Arapaho-Roosevelt NF
 Buffalo Willow Wilderness Connector Trail, Dillon RD, White River NF

Please rename the tabs with the project location name



Multi-project Budget - 1

NON-MOTORIZED TRAILS GRANT

Project details				Match details			
CPW Grant #				Source of match	Type	Date available	Amount
Organization	Wildlands Restorations Volunteers			Park County RAC	Cash	Oct-23	\$ 29,800.00
Project title	Crooked Trout Connector Trail			USFS	In-Kind	Oct-23	\$ 8,320.00
Grant Request (auto populates)	\$ 110,012.00			Volunteer Hours	In-Kind	Oct-23	\$ 103,032.00
Local match	\$ 179,152.00	Min. Match	\$ 27,503.00	Human Potential Machine time	In-Kind	Oct-23	\$ 38,000.00
Project Total	\$ 289,164.00					Match Total	\$ 179,152.00

Description	Qty	Unit type	Cost per unit	Total	Type	CPW Grant	Local match	Balance
Contracted Services								
Professional Crew	5000	feet	\$ 12.00	\$ 60,000.00	Cash	\$ 60,000.00		\$ -
Trail Dozer and Operator	9500	feet	\$ 0.50	\$ 4,750.00	Cash	\$ 4,750.00		\$ -
Trail Dozer and Operator	9500	feet	\$ 4.00	\$ 38,000.00	In-Kind		\$ 38,000.00	\$ -
Youth Corps	2	weeks	\$ 10,521.00	\$ 21,042.00	Cash	\$ 21,042.00		\$ -
				\$ -				\$ -
				\$ -				\$ -
				\$ -				\$ -
				\$ -				\$ -
Salary/Wages								
Project manager	38	Days	\$ 350.00	\$ 13,300.00	Cash	\$ 13,300.00		\$ -
Program Manager	12	Days	\$ 400.00	\$ 4,800.00	Cash		\$ 4,800.00	\$ -
USFS staff	26	Days	\$ 320.00	\$ 8,320.00	In-Kind		\$ 8,320.00	\$ -
WRV Volunteer hours	3240	hours	\$ 31.80	\$ 103,032.00	In-Kind		\$ 103,032.00	\$ -
				\$ -				\$ -
				\$ -				\$ -
				\$ -				\$ -
Materials/Supplies								
Tools and equipment	360	Vol. Day	\$ 5.05	\$ 1,818.00	Cash	\$ 1,818.00		\$ -
Bridge materials	25	feet	\$ 1,000.00	\$ 25,000.00	Cash		\$ 25,000.00	\$ -
				\$ -				\$ -
				\$ -				\$ -
				\$ -				\$ -
				\$ -				\$ -
				\$ -				\$ -
				\$ -				\$ -
Additional Categories								
Awards for Volunteer recognition	360	Vol. Day	\$ 3.00	\$ 1,080.00	Cash	\$ 1,080.00		\$ -
Satellite Communicator	1	unit	\$ 800.00	\$ 800.00	Cash	\$ 800.00		\$ -
WRV truck Mileage	2800	miles	\$ 0.63	\$ 1,750.00	Cash	\$ 1,750.00		\$ -
Grant admin, accounting and reporting	144	hours	\$ 38.00	\$ 5,472.00	Cash	\$ 5,472.00		\$ -
TOTAL				\$ 289,164.00		\$ 110,012.00	\$ 179,152.00	

Multi-project Budget - 2



NON-MOTORIZED TRAILS GRANT

Project details				Match details			
CPW Grant #	Wildlands Restorations Volunteers			Source of match	Type	Date available	Amount
Organization	Wildlands Restorations Volunteers			USFS	Cash	Oct-23	\$ 72,550.00
Project title	Brainard Lake Accessible Connector Trail			USFS	In-Kind	Oct-23	\$ 3,840.00
Grant Request (auto populates)	\$ 62,091.00			Volunteer Hours	In-Kind	Oct-23	\$ 103,032.00
Local match	\$ 179,422.00	Min. Match	\$ 15,522.75				
Project Total	\$ 241,513.00					Match Total	\$ 179,422.00

Description	Qty	Unit type	Cost per unit	Total	Type	CPW Grant	Local match	Balance
Contracted Services								
Machine and operator	4	weeks	\$ 7,500.00	\$ 30,000.00	Cash	\$ 15,000.00	\$ 15,000.00	\$ -
Contract Labor	4	weeks	\$ 1,250.00	\$ 5,000.00	Cash		\$ 5,000.00	\$ -
Engineering	1	Unit	\$ 10,000.00	\$ 10,000.00	Cash		\$ 10,000.00	\$ -
			\$ -	\$ -			\$ -	\$ -
			\$ -	\$ -			\$ -	\$ -
			\$ -	\$ -			\$ -	\$ -
			\$ -	\$ -			\$ -	\$ -
Salary/Wages								
Project Manager	38	Days	\$ 350.00	\$ 13,300.00	Cash	\$ 13,300.00		\$ -
Program Manager	12	Days	\$ 400.00	\$ 4,800.00	Cash		\$ 4,800.00	\$ -
USFS Staff	12	Days	\$ 320.00	\$ 3,840.00	In-Kind		\$ 3,840.00	\$ -
WRV Volunteer Hours	3240	hours	\$ 31.80	\$ 103,032.00	In-Kind		\$ 103,032.00	\$ -
			\$ -	\$ -			\$ -	\$ -
			\$ -	\$ -			\$ -	\$ -
			\$ -	\$ -			\$ -	\$ -
Materials/Supplies								
Tools and equipment	160	Vol. Day	\$ 5.05	\$ 808.00	Cash	\$ 808.00		\$ -
Road base	60	tons	\$ 50.00	\$ 3,000.00	Cash		\$ 3,000.00	\$ -
Crusher Fines	450	tons	\$ 35.00	\$ 15,750.00	Cash	\$ 12,500.00	\$ 3,250.00	\$ -
Geoweb, rebar and clips	15000	ft2	\$ 1.00	\$ 15,000.00	Cash	\$ 15,000.00		\$ -
Weed barrier and staples	25	rolls	\$ 160.00	\$ 4,000.00	Cash		\$ 4,000.00	\$ -
Culverts	5	units	\$ 500.00	\$ 2,500.00	Cash		\$ 2,500.00	\$ -
Bridge materials	25	feet	\$ 1,000.00	\$ 25,000.00	Cash		\$ 25,000.00	\$ -
			\$ -	\$ -			\$ -	\$ -
Additional Categories								
Awards for Volunteer recognition	160	Vol. Day	\$ 3.00	\$ 480.00	Cash	\$ 480.00		\$ -
Satelite Communicator	1	unit	\$ 800.00	\$ 800.00	Cash	\$ 800.00		\$ -
WRV truck Mileage	1800	miles	\$ 0.63	\$ 1,125.00	Cash	\$ 1,125.00		\$ -
Grant admin, accounting and reporting	81	hours	\$ 38.00	\$ 3,078.00	Cash	\$ 3,078.00		\$ -
TOTAL				\$ 241,513.00		\$ 62,091.00	\$ 179,422.00	

Multi-project Budget - 3



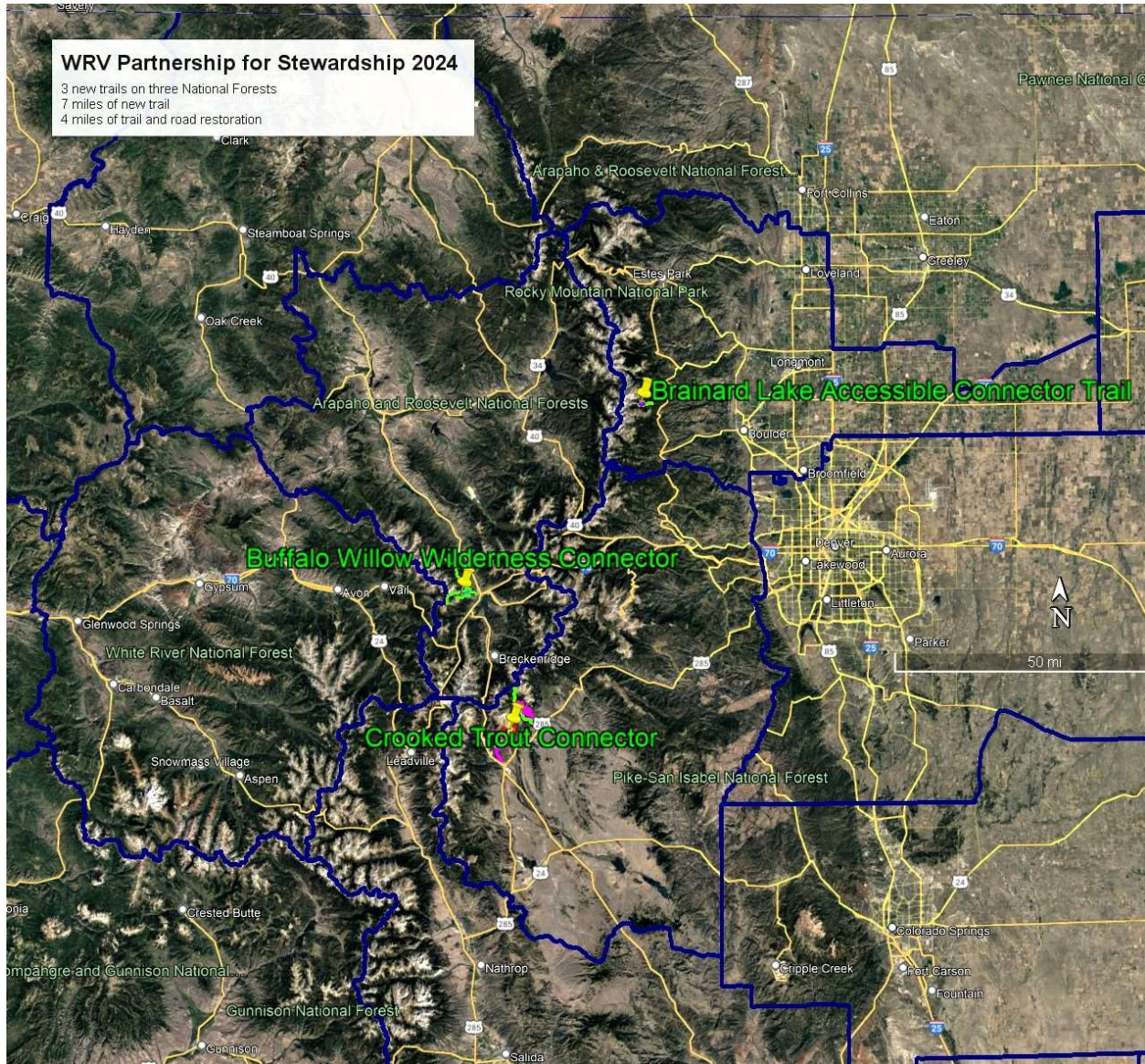
NON-MOTORIZED TRAILS GRANT

Project details				Match details			
CPW Grant #				Source of match (organization)	Type	Date available	Amount
Organization	Wildlands Restoration Volunteers			NFF SCF	Cash	Oct-23	\$ 3,000.00
Project title	Buffalo/Willow Wilderness Connector Trail			USFS GAOA	In-Kind	Oct-23	\$ 42,084.00
Grant Request (auto populates)	\$ 20,088.90			USFS Staff Hours	In-Kind	Oct-23	\$ 2,560.00
Local match	\$ 75,691.60	Min. Match	\$ 5,022.23	Volunteer Hours	In-Kind	Oct-23	\$ 28,047.60
Project Total	\$ 95,780.50					Match Total	\$ 75,691.60

Description	Qty	Unit type	Cost per unit	Total	Type	CPW Grant	Local match	Balance
Contracted Services								
Youth Corps	4	weeks	\$ 10,521.00	\$ 42,084.00	In-Kind		\$ 42,084.00	\$ -
Llama Rental	6	days	\$ 250.00	\$ 1,500.00	Cash	\$ 1,500.00		\$ -
Saw Maintenance	3	saws	\$ 250.00	\$ 750.00	Cash	\$ 750.00		\$ -
				\$ -				\$ -
				\$ -				\$ -
				\$ -				\$ -
				\$ -				\$ -
Salary/Wages								
Project manager	35	Days	\$ 350.00	\$ 12,250.00	Cash	\$ 12,250.00		\$ -
Program Manager	12	Days	\$ 400.00	\$ 4,800.00	Cash	\$ 4,800.00		\$ -
USFS staff	8	Days	\$ 320.00	\$ 2,560.00	In-Kind		\$ 2,560.00	\$ -
WRV Volunteer hours	882	hours	\$ 31.80	\$ 28,047.60	In-Kind		\$ 28,047.60	\$ -
				\$ -				\$ -
				\$ -				\$ -
				\$ -				\$ -
Materials/Supplies								
Tools and equipment	98	Vol. Day	\$ 5.05	\$ 494.90	Cash	\$ 494.90		\$ -
Bridge materials	30	feet	\$ 60.00	\$ 1,800.00	Cash		\$ 1,800.00	\$ -
				\$ -				\$ -
				\$ -				\$ -
				\$ -				\$ -
				\$ -				\$ -
				\$ -				\$ -
				\$ -				\$ -
Additional Categories								
Awards for Volunteer recognition	98	Vol. Day	\$ 3.00	\$ 294.00	Cash	\$ 294.00		\$ -
Lodging	8	nights	\$ 150.00	\$ 1,200.00	Cash		\$ 1,200.00	\$ -
WRV truck Mileage	2800	miles	\$ 0.63	\$ 1,750.00	Cash			\$ 1,750.00
Grant administration	27	hours	\$ 38.00	\$ 1,026.00	Cash			\$ 1,026.00
TOTAL				\$ 98,556.50		\$ 20,088.90	\$ 75,691.60	

Wildland Restoration Volunteers - Partnership for Trail Stewardship 2024

Maps and Pictures



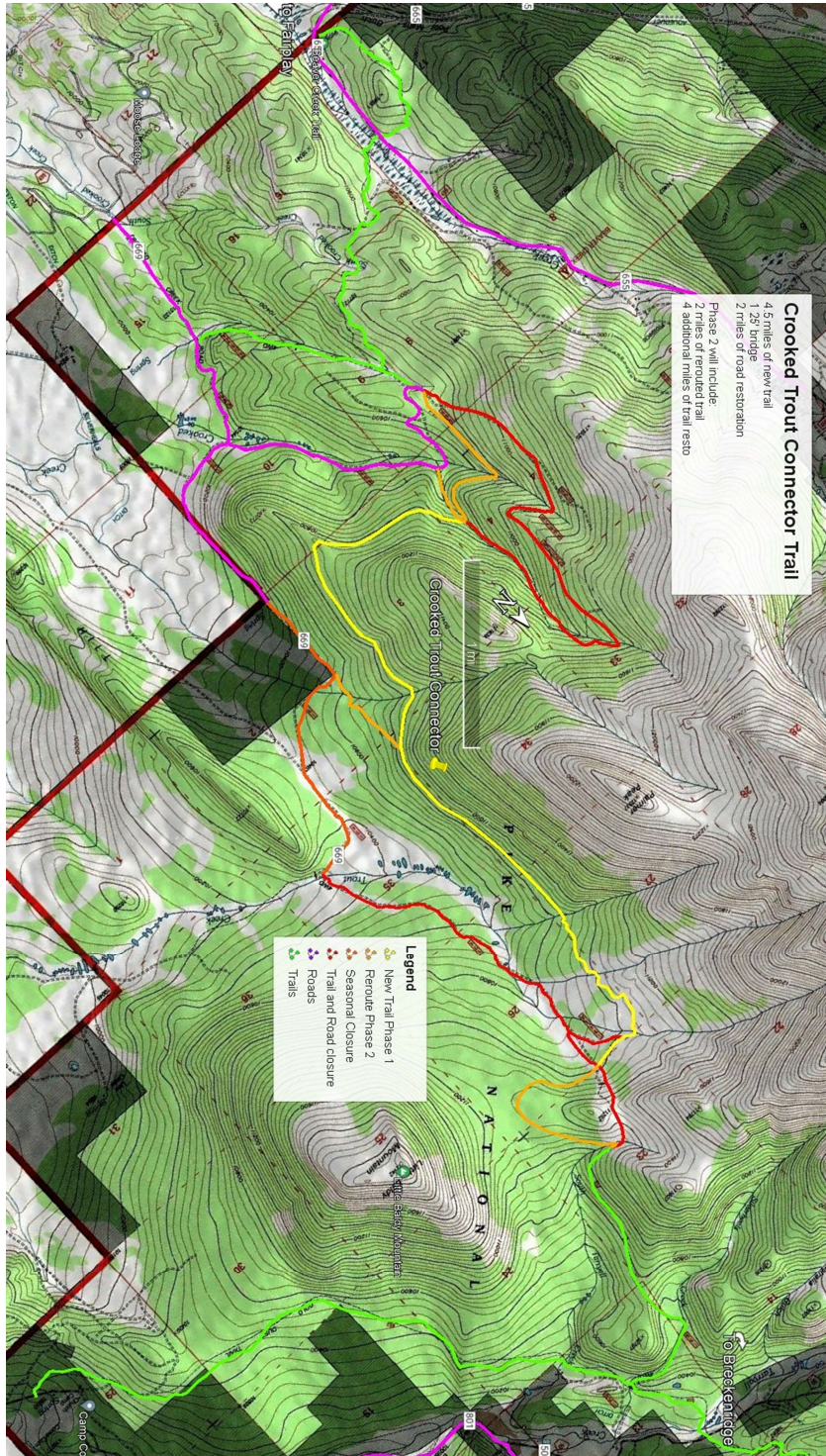
Wildlands Restoration Volunteers is working with three different forests, Arapaho-Roosevelt, White River, and Pike-San Isabel, to reduce resource damage and wildlife conflicts while improving access to our public lands.

While these projects involve seven miles of new trail construction, each includes significant closure and restoration of existing access routes causing resource damage. The overall effect will be a net improvement to habitats, safer access, and reduced maintenance burden to land managers.

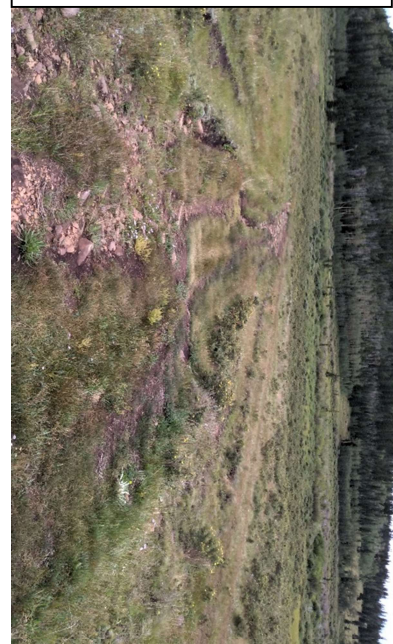
The Crooked Trout Connector

South Park Ranger District, Pike-San Isabel National Forest

A new 4.5-mile trail replaces access lost to the closure of the unsustainable Trout Creek Road and takes traffic out of sensitive riparian and meadow habitats and onto well-drained cross slopes. Seasonal closures will further protect wildlife from human interference.

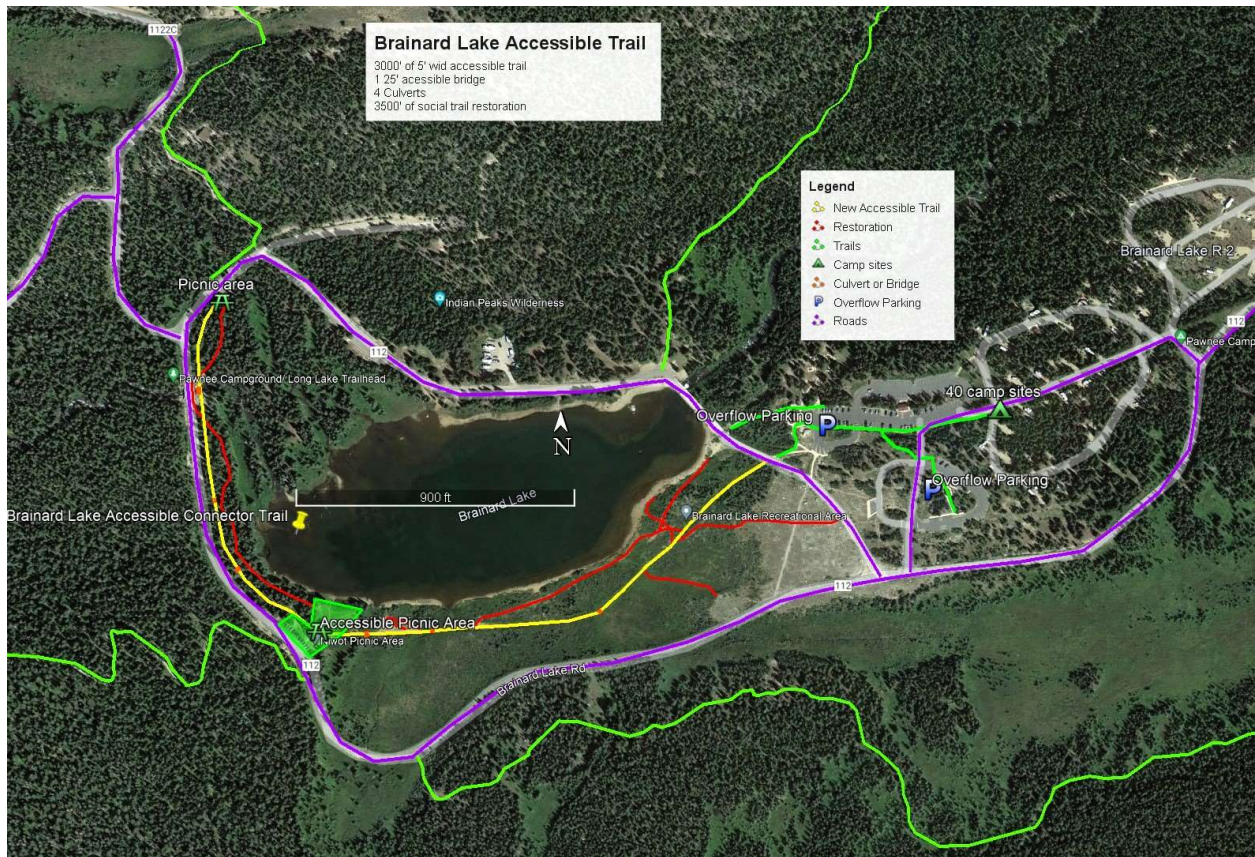


Slated for closure, Trout Creek Road (above) intercepted the creek and (below) heavily braided through an open meadow.



Brainard Lake Accessible Trail

Boulder Ranger District, Arapaho - Roosevelt National Forest



We've prioritized stabilizing Brainard's unraveling wilderness trails over the past six years. It is time to provide equitable access to this beautiful landscape. A new one-mile accessible trail will link camping and overflow parking to the lake and trailheads.

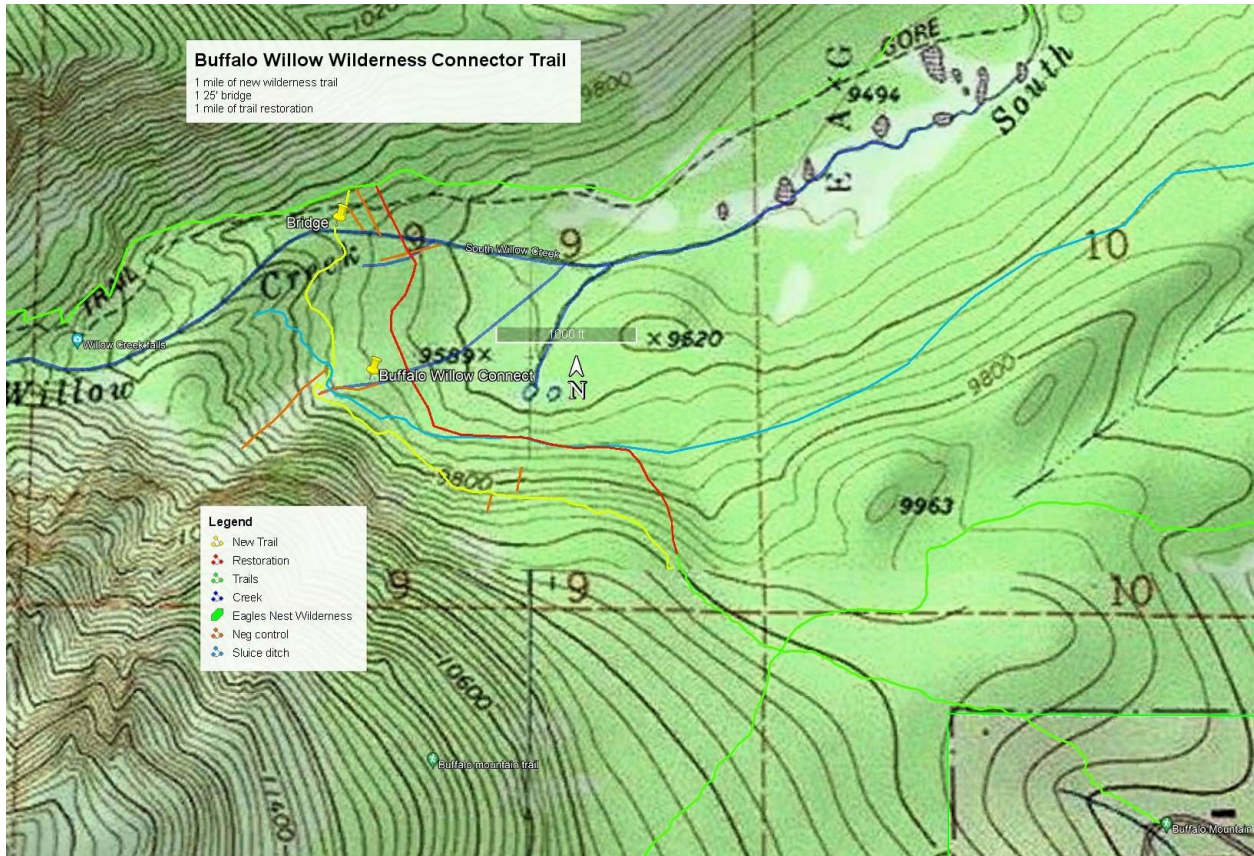


Currently, campers and visitors who don't arrive in time for the limited trailhead spots have two choices:

1. Pick their way through the many unmarked social trails (above)
2. Share the narrow road with vehicle traffic (left)

Buffalo Willow Wilderness Trail

Dillon Ranger District, White River National Forest



We were asked to fix the existing trail which contains grades exceeding 30% and which would need 3 new bridges (below) and 1000+ feet of turnpike through wetlands (left). A new trail could be constructed with fewer resources. It would remain above the sensitive wetland and riparian habitat while holding sustainable grades on well-drained cross slopes.



<u>State Trails Location and Stats</u>	Crooked Trout	Brainard Lake	Buffalo Willow	TOTAL
Location				
Land Management Agency	USFS PSINF South Park RD	USFS ARNF Canyon Lakes RD	USFS WRNF Dillon RD	
Nearest Town	Fairplay	Longmont	Silverthorne	
County	Park	Boulder	Summit	
Lat/Lon Coordinates	39.306922° - 105.976749°	40.076805° - 105.574682°	39.628630° - 106.129528°	
State Congressional District #	5	2	2	
Quantified Work				5280
Acreage of new Trailhead	0.00	0.00	0.00	0.00
Miles of interconnected trail	400.00	133.00	180.00	713.00
Miles Natural Surface Trail Construction	4.50	0.00	2.00	6.50
Miles of Corridor Clearing	4.50	0.19	2.00	6.69
Miles Crusher Fine Trail	0.00	0.57	0.00	0.57
Miles Trail Maintenance	0.00	0.00	0.00	0.00
Miles Trail Closure & Restoration	2.18	0.66	0.97	3.81
Feet of Bridge, Boardwalk, Causeway, Puncheon, Switchback, Rock walls, Rock staircases and other heavy structures	240.00	60.00	100.00	400.00
Acres Trailside Habitat Improvement	5.28	3.44	7.19	15.91



Colorado Parks and Wildlife
State Trails Program
13787 S. Hwy 85
Littleton, CO 80125

September 29, 2023

Re: Wildlands Restoration Volunteers (WRV) Trail Grant Request

Dear Review Committee:

I am pleased to support the Wildlands Restoration Volunteers (WRV) state trails grant application which includes important work on the Beaver Creek Trail, north of Fairplay.

The Beaver Creek Trail is the most popular non-wilderness trail on the Pike San Isabel National Forest - South Platte Ranger District but due to some unsustainable roads being decommissioned in the new Travel Management Plan will become disconnected from the larger trail systems to the East and North in Summit County. A new sustainable trail alignment would reconnect these trails and vastly improve the visitor experience while reducing the impacts to wildlife and resource damage.

This project is important to re-establish this important trail, but also because this trail is the last link needed to establish a continuous mountain bike route from Breckenridge to Fairplay.

The Mosquito Range Heritage Initiative works to protect and preserve the beautiful Mosquito Range Mountains. Our Continental Divide study area includes four 14,000ft peaks, 30 rare plant species, 3 endemic plant species, and is within an area designated as one of 49 National Heritage Areas for its ecological and historical resources. Naturally, these features attract visitors from recreationalists to outdoor enthusiasts from around the world. Unfortunately, the impact of more than 10,000 visitors can be devastating to fragile tundra environments. Pristine meadows can be crushed by tire treads and vital watersheds can be endangered by misuse. It is crucial, therefore that damaged trails are repaired, receive regular maintenance, and that visitors and locals are educated about the ecosystem and best practices.

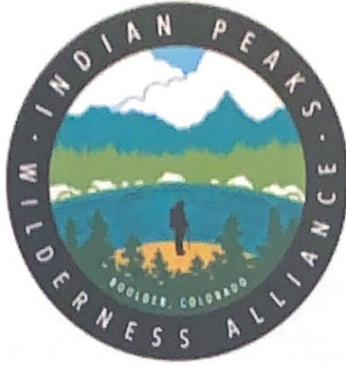
We pledge our support to WRV to conduct this project by offering volunteer recruitment and trail crew support. We are very grateful for your consideration in repairing this treasured local trail.

Sincerely,

A handwritten signature in cursive script that reads 'Cara Doyle'.

Cara Doyle
Executive Director

Saving Wilderness.



Changing Lives.

Colorado State Parks and Wildlife, State Trails Program
13787 S. Highway 85
Littleton, CO 80125

9/15/2023

Dear Trails Committee:

I am writing in support of Wildlands Restoration Volunteers' (WRV) state trails grant proposal for the Brainard Lake Connector Trail. I am the Board Chair of Indian Peaks Wilderness Alliance, which has partnered with WRV to accomplish important trail work many times over the years.

The Brainard Recreation Area, is one of the most popular wilderness access points in the country. These heavily used and spectacular trails have been designated by the US Forest Service as one of its top trail maintenance priorities right now. A new connector around Brainard Lake will provide safe access from the camping and overflow parking areas to the wilderness trailheads.

The mission of the Indian Peaks Wilderness Alliance is to preserve and protect the Indian Peaks and James Peak Wilderness areas located in the Front Range of the Rocky Mountains. IPWA has over 100 active volunteer who contribute over 3,500 hours annually to the James Peak and Indian Peaks Wilderness Areas. The Indian Peaks is one of the most heavily used wilderness areas in the country, and the US Forest Service has a massive backlog of high priority work, which simply won't get done without partnerships between groups such as WRV and IPWA.

IPWA has partnered with WRV to support Wilderness trail work to provide both funding and recruitment of IPWA volunteers. We feel strongly about supporting WRV's capacity to carry out their increasingly extensive programs, especially considering the extensive role they will play in Wilderness trail work over the next three years.

Thank you for your consideration of WRV's grant proposal.

Fiona H. Garvin
Chair,
Indian Peaks Wilderness Alliance Board of Directors

IndianPeaksWilderness.org

IPWA, PO Box 17382, Boulder, CO 80308



NO BARRIERS

Colorado State Parks and Wildlife, State Trails Program
13787 S. Highway 85
Littleton, CO 80125

Dear State Trails Committee Members:

On behalf of No Barriers, I am writing to support the work of Wildlands Restoration Volunteers (WRV) on the Brainard Lake Accessible Trail project located in the Arapaho Roosevelt Forest west of Boulder. The Brainard Lake Recreation area is one of the nations most popular wilderness access points but currently has no accessible trails outside the camping and parking areas. Many visitors are forced to share space with vehicles on very narrow roads to see this area's beautiful landscapes.

Our organization was founded by world-class blind adventurer, Erik Weihenmayer, the mission of No Barriers USA is to provide educational transformative programs and experiences to shift mindsets, create a sense of belonging, build confidence in possibilities, and rediscover identity. Through our award-winning experiential programming, we provide students, educators, veterans, caregivers, and people of all abilities with a roadmap that helps individuals and their communities break through barriers, unleash potential, and contribute their best back to the world.

Our engaged community participates in the transformational experiences that take place on our campus and in the greater Colorado backcountry. The development of this trail would allow the expansion of programming, deepen impact, and will redefine what accessible recreation looks like in this area.

WRV is integral in the success of this project. As a volunteer organization, they will provide coordination and logistical aid to accomplish this large scale trail construction project. WRV provides trained leaders, tools, design expertise, project management, and partner coordination along with the recruiting of volunteers and tracking of volunteer time.

It is our hope that WRV will receive serious consideration for their grant application. Please contact No Barriers Program Director Mariah Nelson at mariah.nelson@nobarriersusa.org if you have any questions regarding the Surprise Lake Trail project.

Sincerely,

Pat Murray
No Barriers Executive Director



September 20, 2023

Colorado Parks and Wildlife
Nonmotorized Trails Program
13787 S. Highway 85
Littleton, CO 80125

Dear Trails Committee,

As the Chair of the Eagle Summit Wilderness Alliance (ESWA), I am writing to support Wildlands Restoration Volunteers' (WRV) Support Grant through the Colorado State Trails Program. We have partnered with WRV to accomplish important trail work over the past few years, and hope to continue this partnership to benefit the trails in our area.

The Buffalo/Willow Connector Trail is a high-use trail in the Eagles Nest Wilderness and the only public access to the Gore Range Trail and the popular Willow Falls destination from Silverthorne. It's a poorly aligned user-created trail that is dangerously eroded, located in sensitive habitat and is in urgent need of substantial realignment.

ESWA is committed to the health and preservation of the three Wilderness Areas located in Eagle and Summit Counties, Colorado - Eagles Nest, Holy Cross, and Ptarmigan Peak. We deploy volunteers as Wilderness Rangers, sawyers, and in other outreach roles, but we are always thrilled to partner with organizations like WRV to accomplish additional work.

We hope that you will award WRV with a State Trails Construction Grant to allow them to continue and build on our prior partnership in maintaining our Summit County trails. If you have any questions, please call or email me: karnstieg@comcast.net 970-471-2298

We sincerely appreciate the State Trails Program's foresight and support.

Thank you,

Karn Stiegelmeier
Chair, Eagle Summit Wilderness Alliance

Document checklist



NON-MOTORIZED TRAILS GRANT APPLICATION – CONSTRUCTION OR MAINTENANCE

PROJECT DETAILS

Organization Wildlands Restoration Volunteers

Project title WRV Partnership for Trail Stewardship 2024

DOCUMENTS

PRE-APPLICATION - SEPTEMBER

Document	Source	Submission format
<input checked="" type="checkbox"/> 1. Scope of work	Applicant's own	PDF
<input checked="" type="checkbox"/> 2. Project map	Applicant's own	PDF

FULL APPLICATION - OCTOBER

Document	Source	Submission format
<input checked="" type="checkbox"/> 3. Application form	CPW template	PDF
<input checked="" type="checkbox"/> 4. Timeline	CPW template	PDF
<input checked="" type="checkbox"/> 5. Budget	CPW template	Unprotected Excel file
<input checked="" type="checkbox"/> 6. Photographs & maps	Applicant's own	Merged PDF (5 pages max)
<input checked="" type="checkbox"/> 7. Letters of support	Various	Merged PDF (5 letters max)
<input checked="" type="checkbox"/> 8. Resolution	Applicant's own	Signed PDF
<input checked="" type="checkbox"/> 9. Environmental forms	CPW Template	Signed PDF
<input checked="" type="checkbox"/> 10. Formal EA or NEPA*	Federal Template	Web link or PDF

ADDITIONAL PROJECT INFORMATION

11. Required match funding secured (including cash match funds)
12. Construction projects have been evaluated for permits and, if required, permits obtained.
13. Project area is owned by a public land agency or has an easement that designates the area be open to the public for at least 25 years.
14. Conservation/Youth Corps or other organization will be used on the project.
Name of organization: RMYC
15. Volunteers will be utilized on the project
Name of organization: Wildlands Restoration Volunteers

*Must be completed prior to application presentations in January.