

Sage-Grouse Status



Gunnison Sage-Grouse

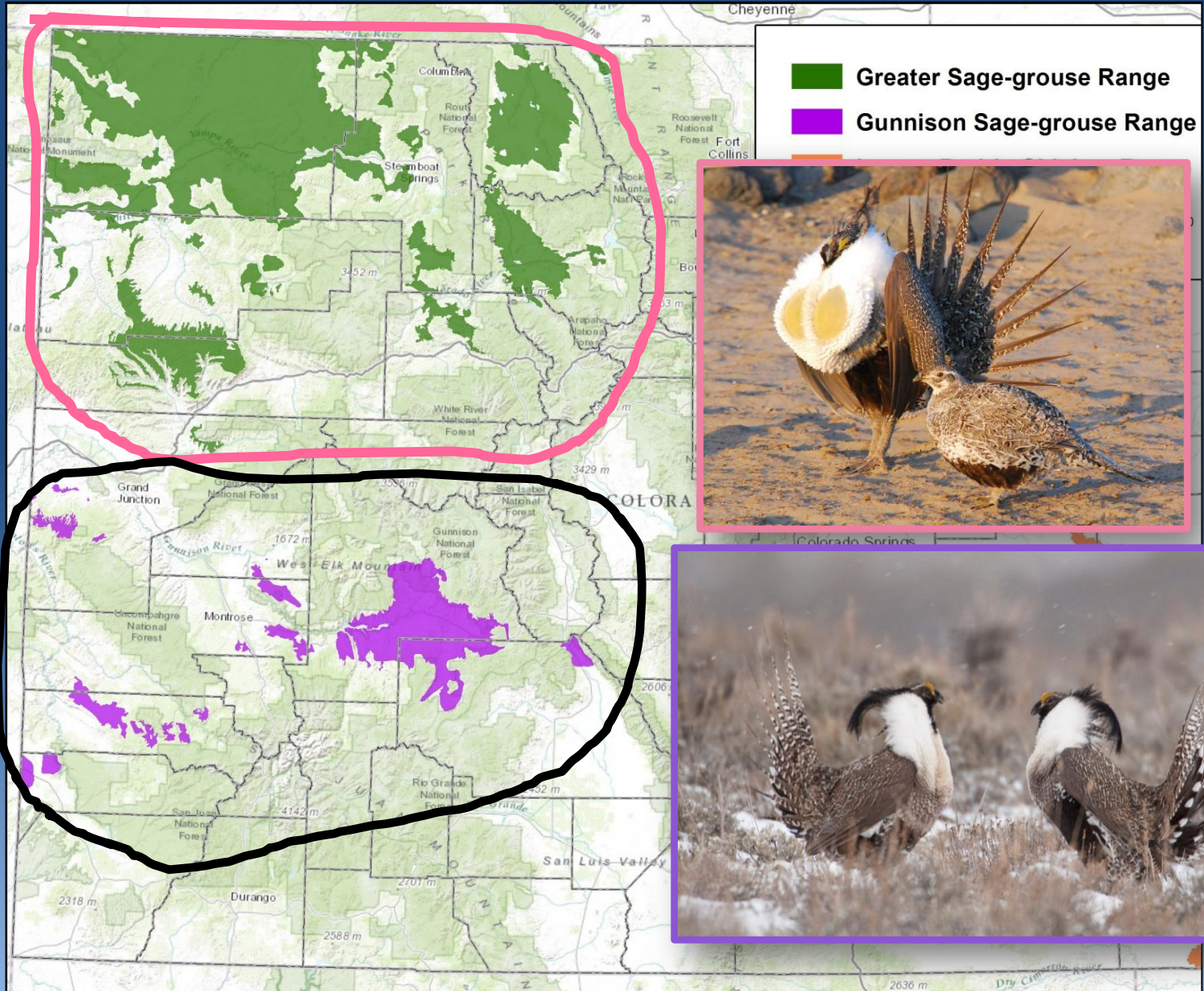


Greater Sage-Grouse

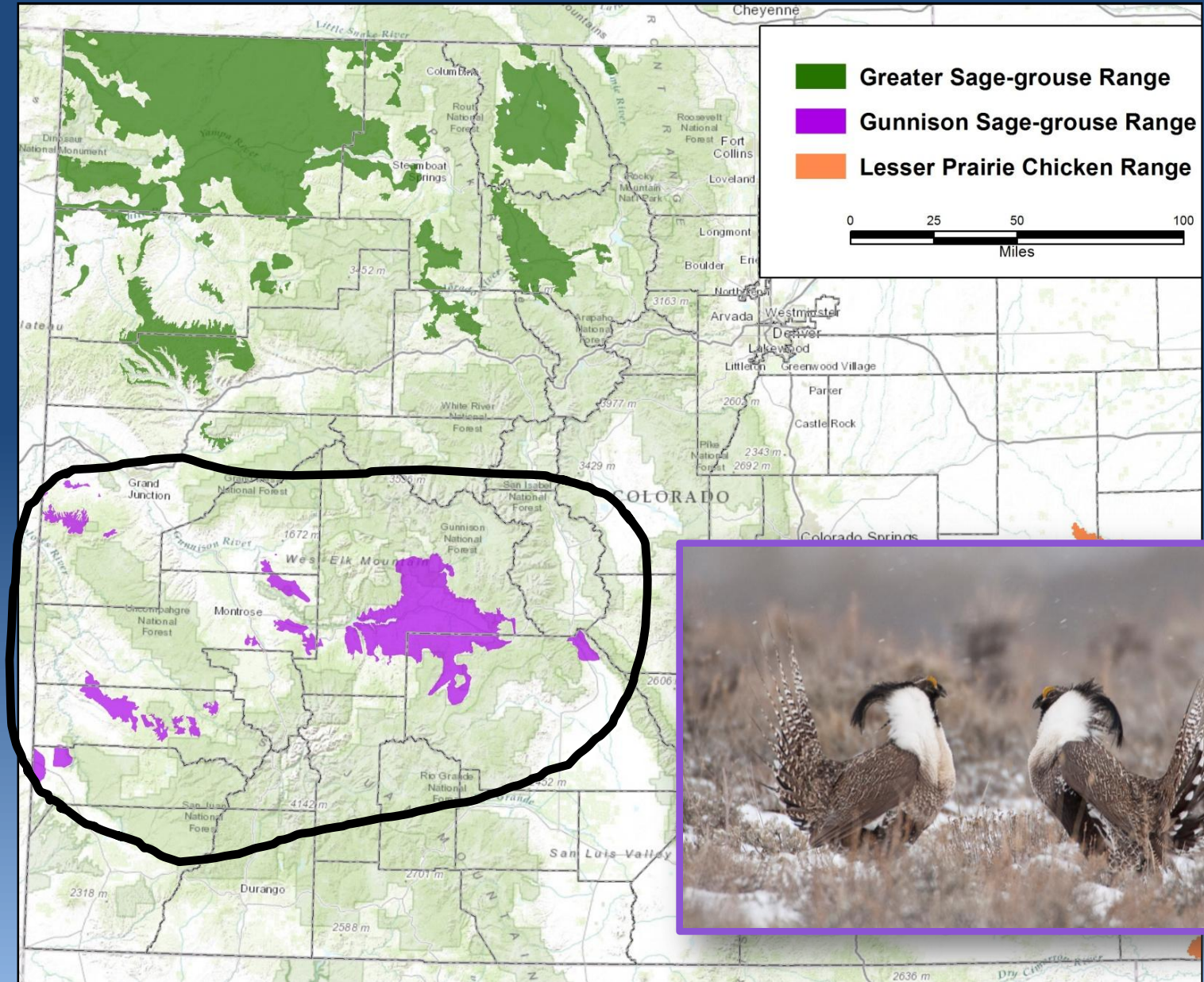
Kathy Griffin – Statewide Grouse Conservation Coordinator



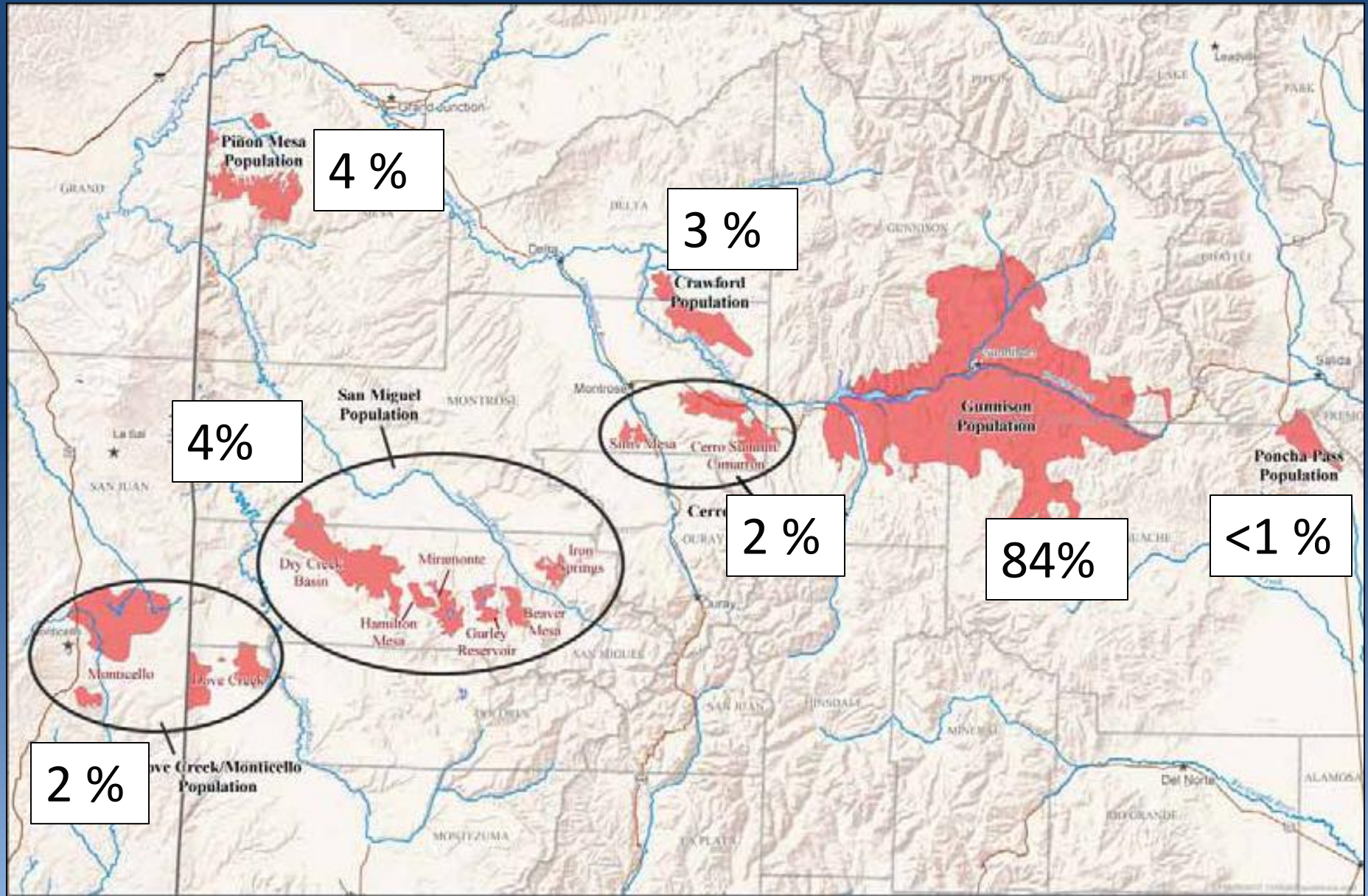
Sage-Grouse Distribution - CO



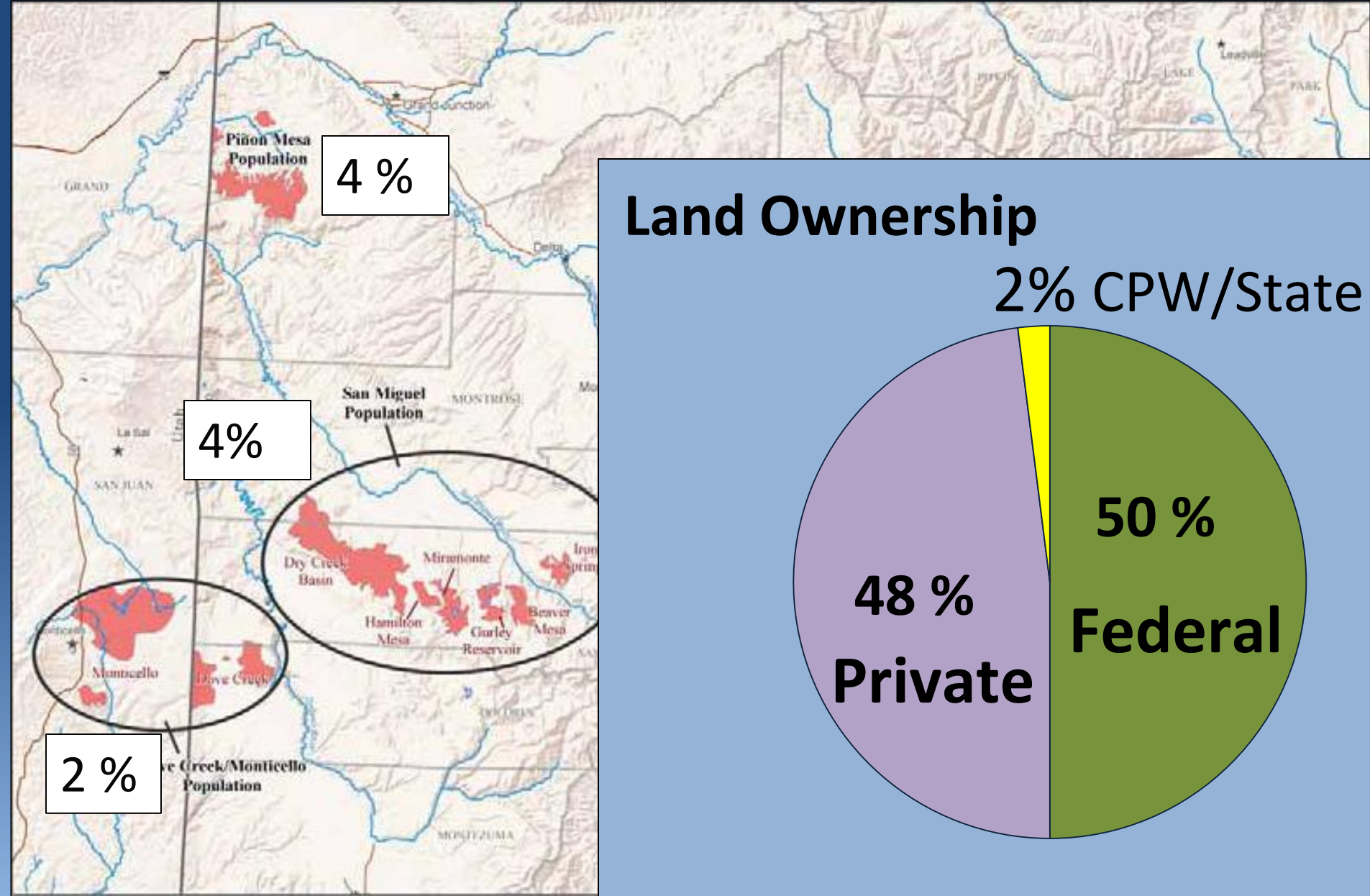
Gunnison Sage-Grouse



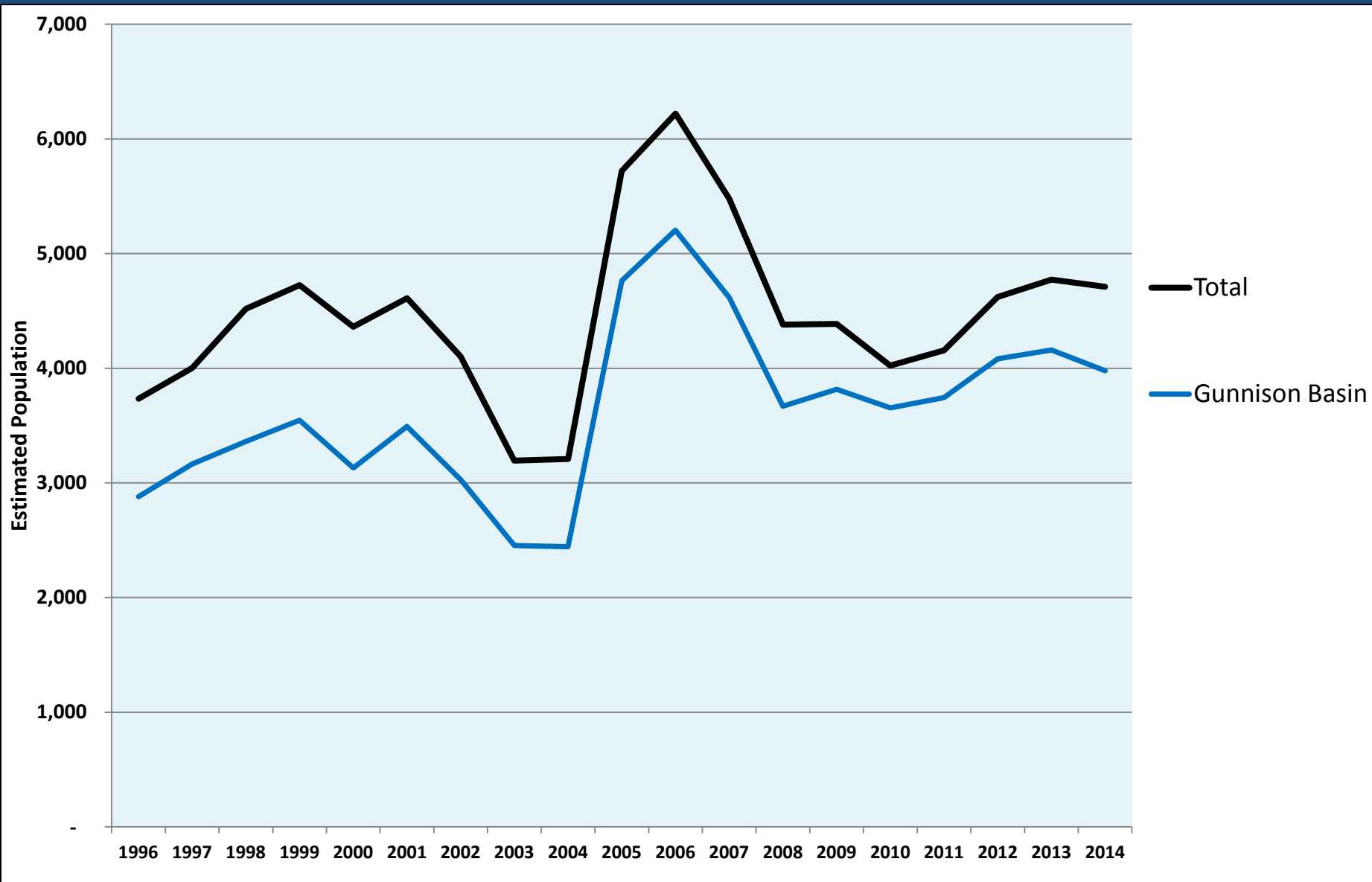
GuSG - Range



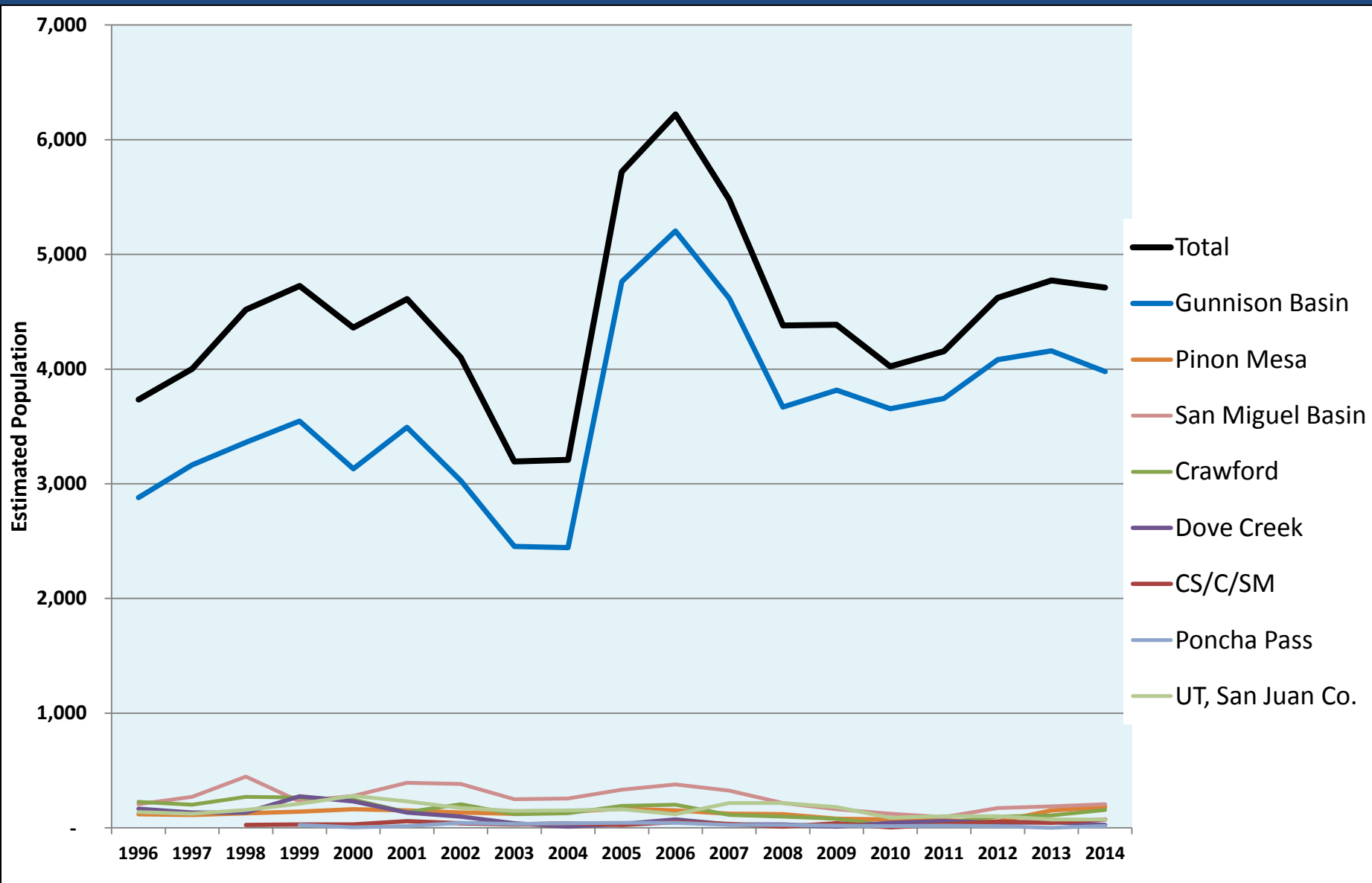
GuSG - Range



GuSG –Trend by Population



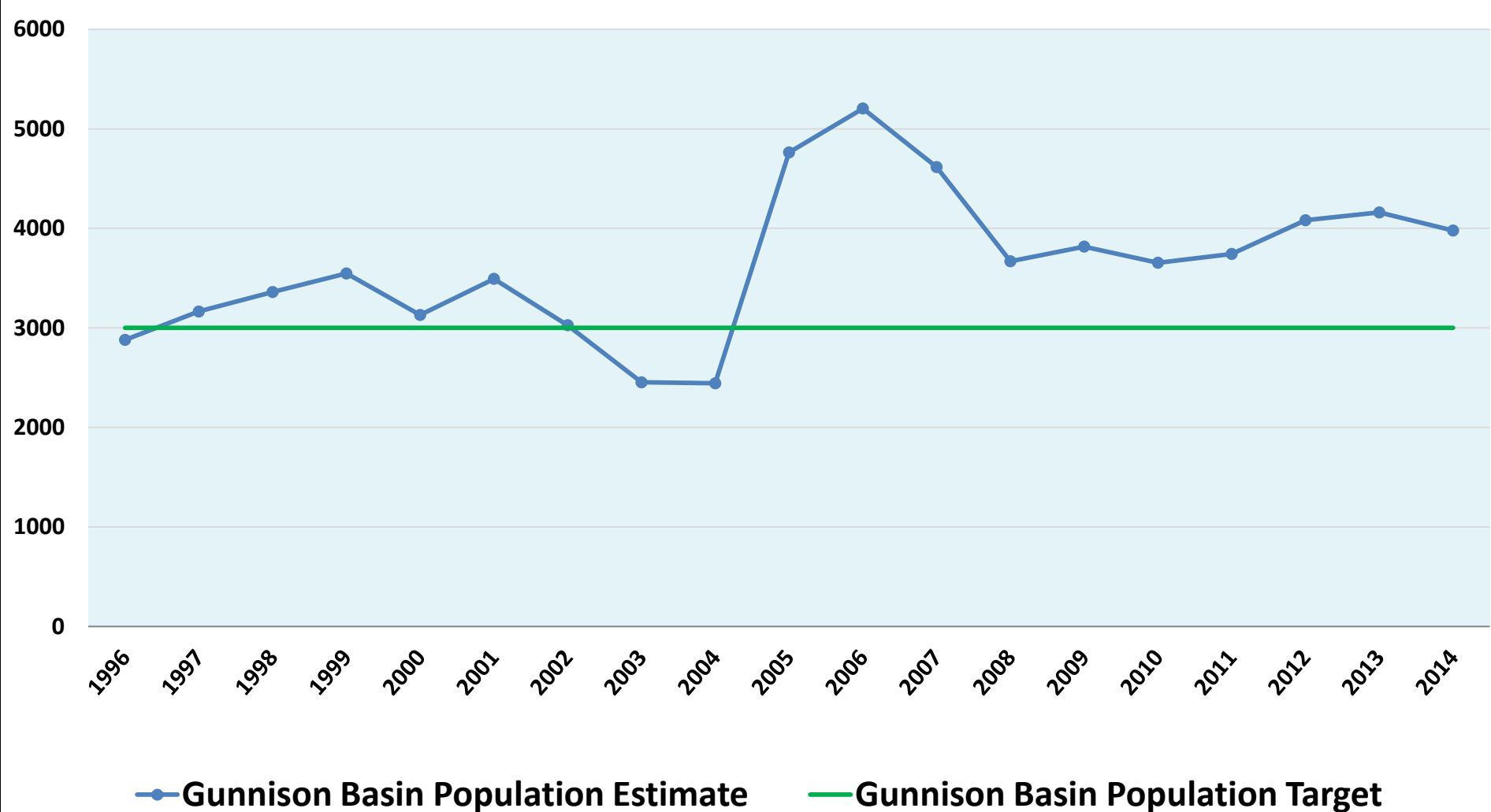
GuSG –Trend by Population



GuSG – Population Trends



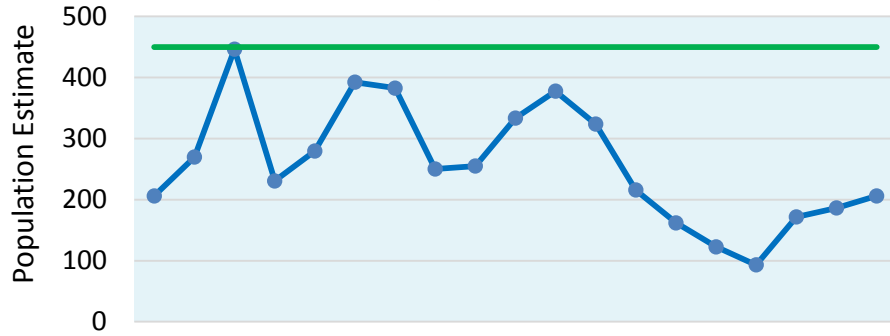
Gunnison Basin



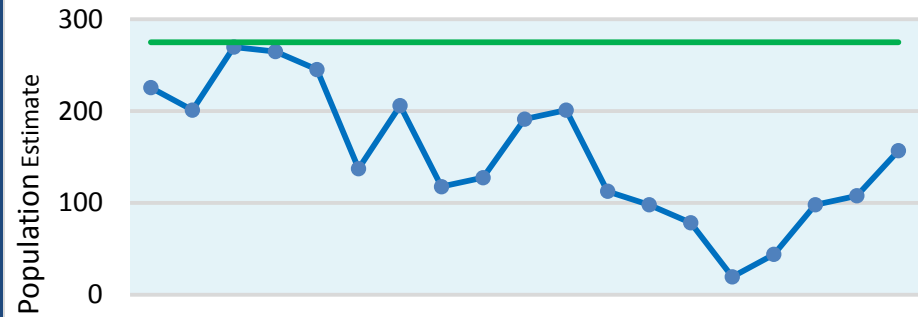
GuSG – Population Trends



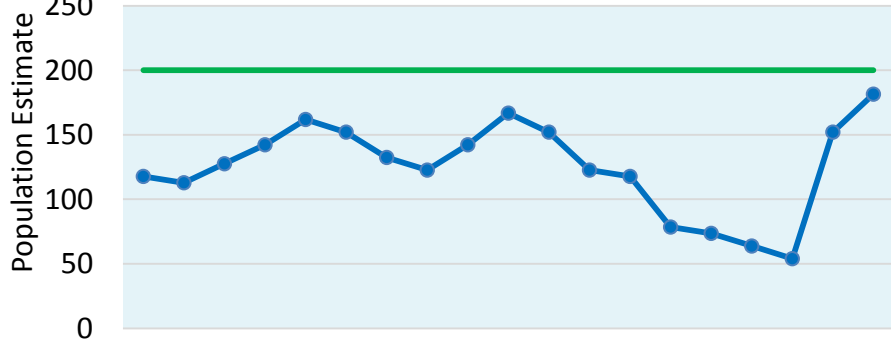
San Miguel Basin



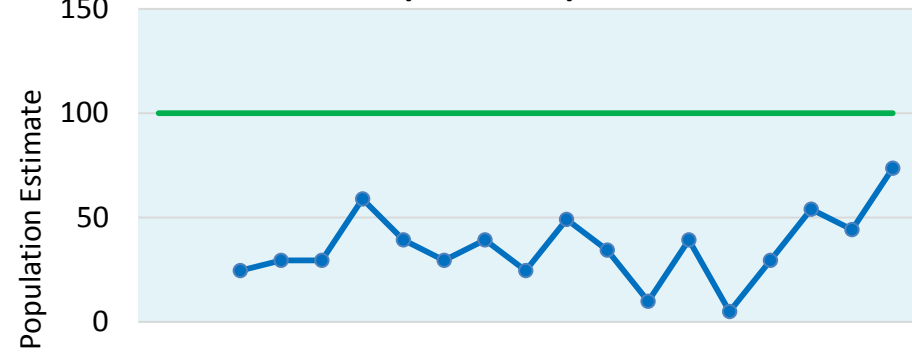
Crawford



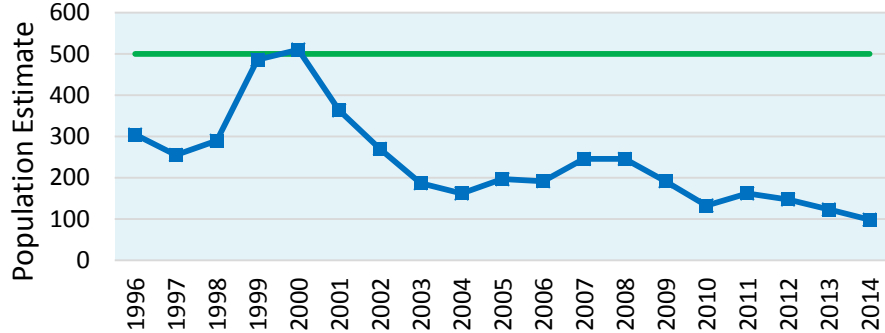
Pinon Mesa



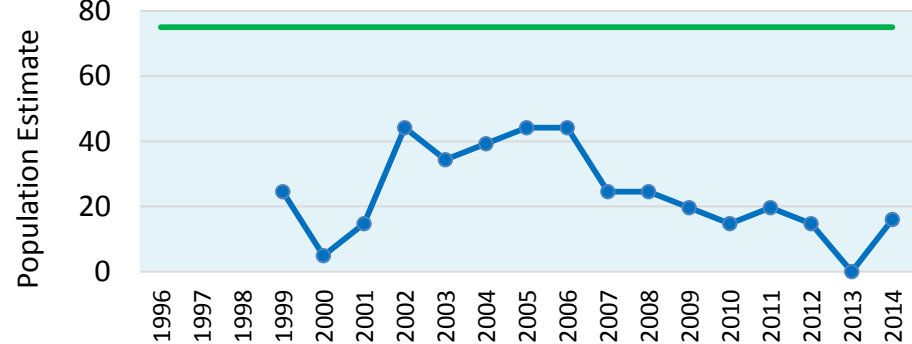
Cerro Summit/Cimarron/Sims Mesa



Dove Creek-Monticello



Poncha Pass



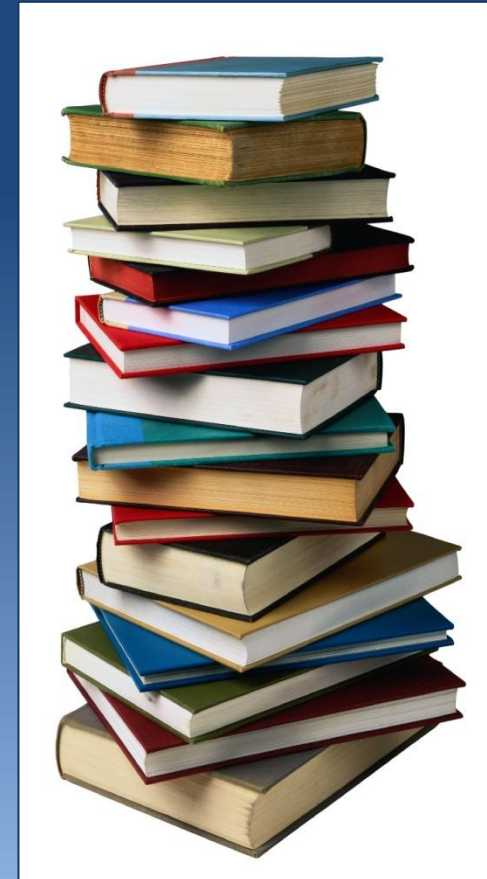
GuSG – BLM Update



CCA – Candidate Conservation Agreement

BLM RMPA & EIS

- Draft expected in Fall
 - Comment period
- Final - July 2016



GuSG – Conservation Actions



■ Species conservation

- Population monitoring
- Trap and transplant
- Predator control study
- Research



■ Habitat Protection / Conservation

- Conservation Easements
- CCAA - Candidate Conservation Agreements with Assurances (40 properties; ~93,000 ac)
- Habitat treatments (>35,000 ac)



GuSG – FWS Listing Determination



Dec. 22, 2014 - Threatened

Next Steps – FWS can develop

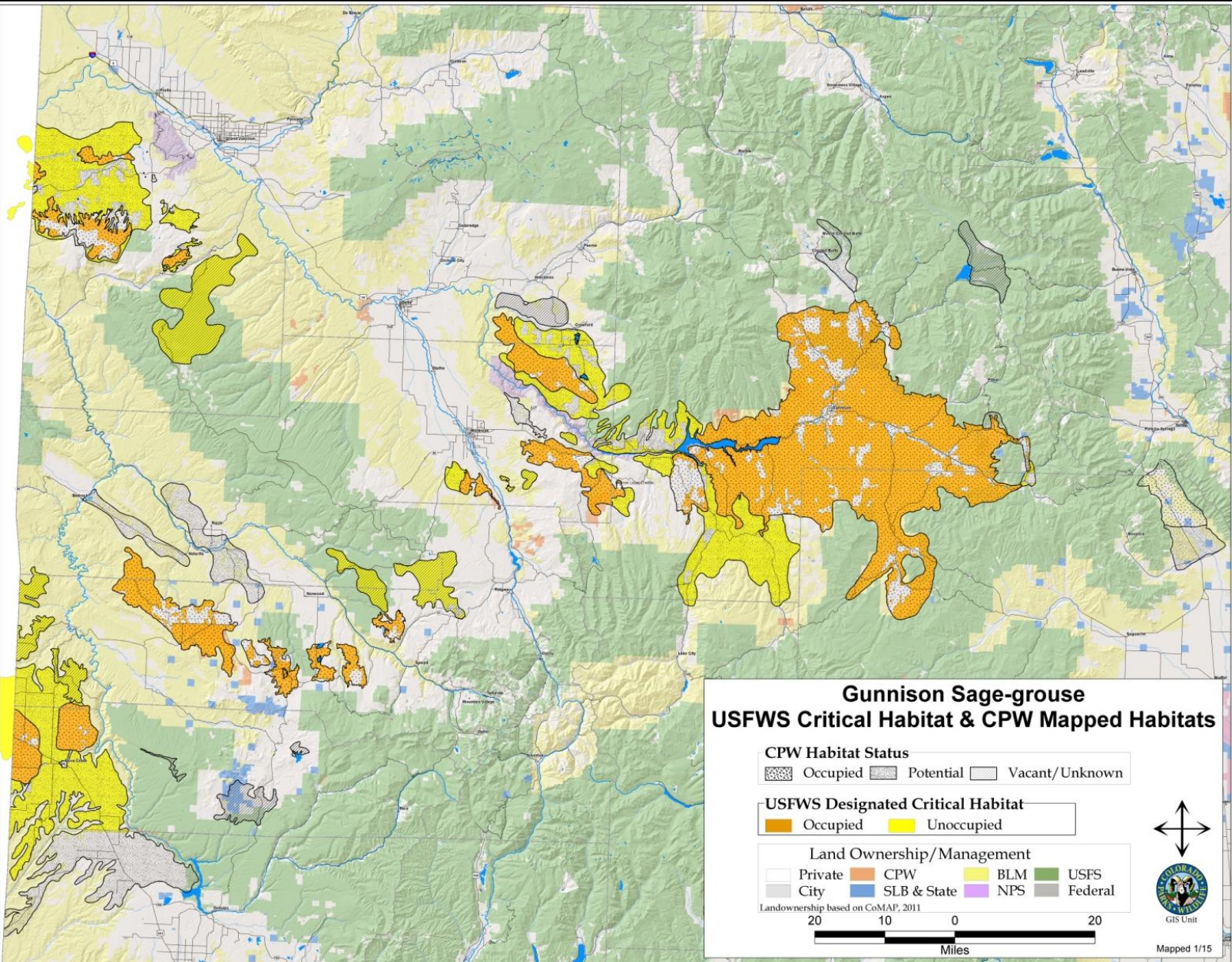
- 4 (d) rule
 - geographical area
 - program area
- Recovery Plan

Next Steps – CPW

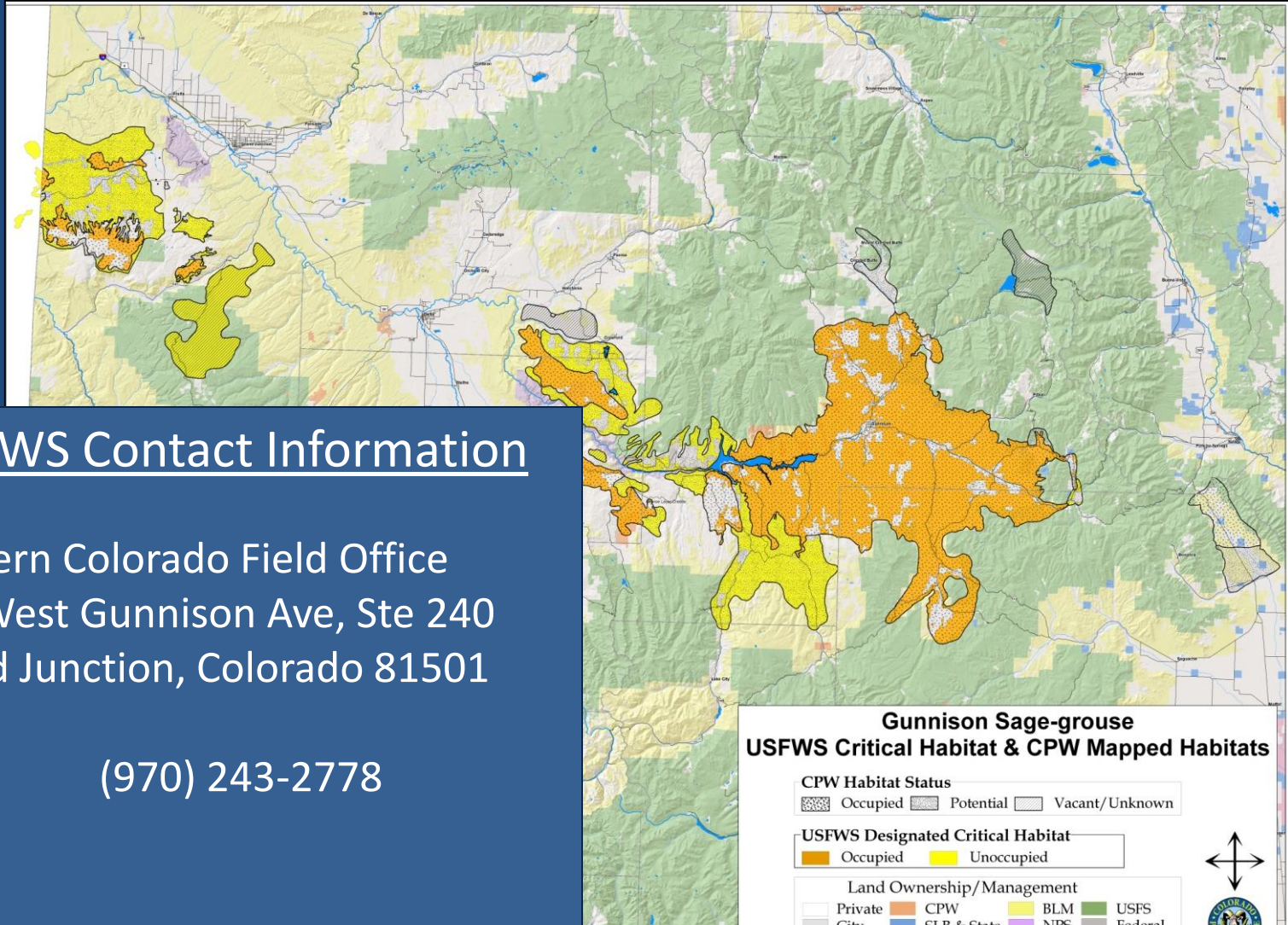
- Section 6 Agreement



GuSG – FWS Critical Habitat



GuSG – FWS Critical Habitat



USFWS Contact Information

Western Colorado Field Office
445 West Gunnison Ave, Ste 240
Grand Junction, Colorado 81501

(970) 243-2778

FWS Critical Habitat maps by population = <http://www.fws.gov/coloradoes/gusg/>

GuSG – Potential Lawsuits?



Notice of Intent to Sue / Filed lawsuit

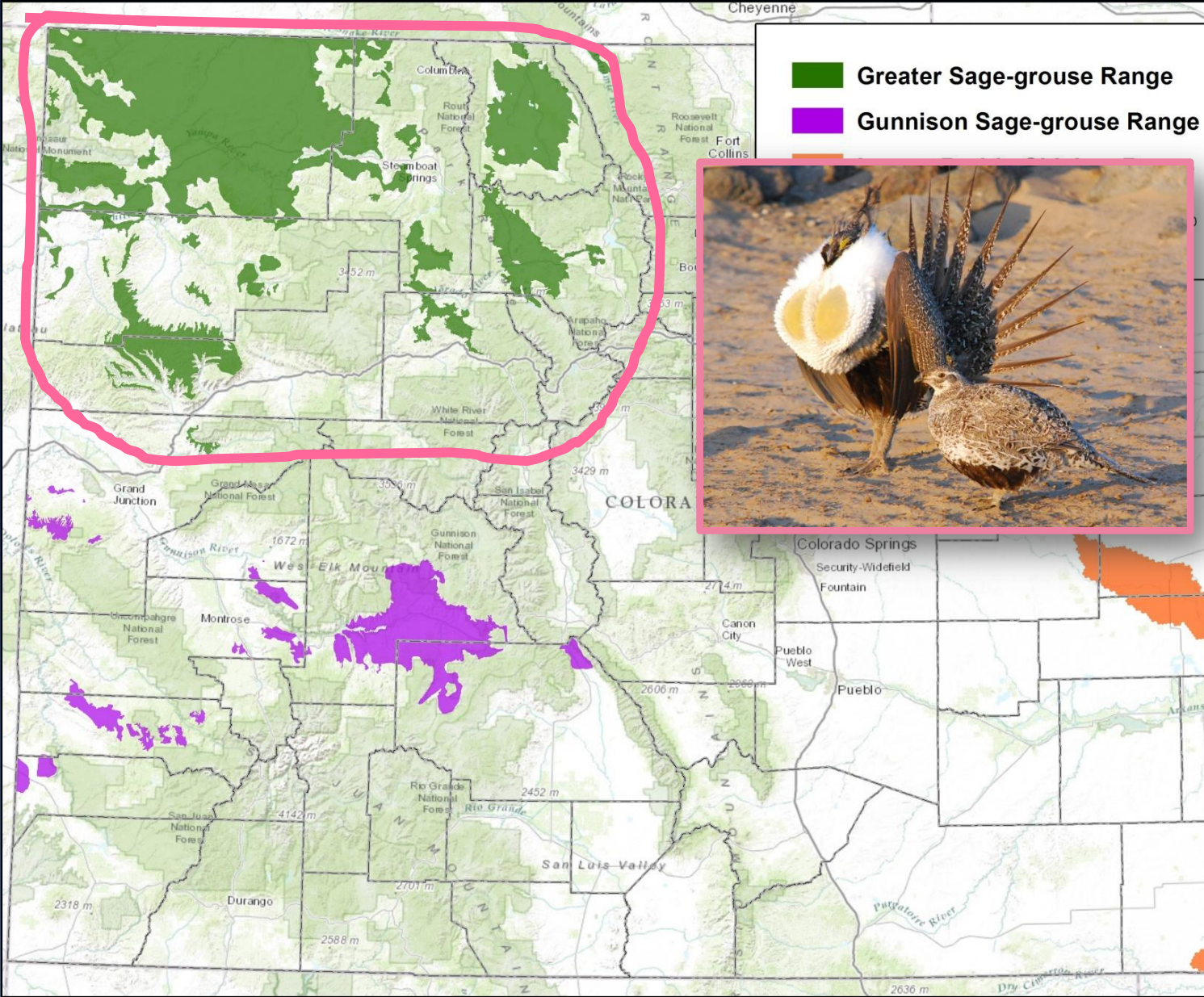
■ FWS went too far in Threatened

- State of Colorado
- State of UT
- Gunnison county
- San Juan county, UT

■ FWS didn't go far enough in Threatened

- Western Watershed Project & Center for Biological Diversity
- Advocates of the West (Wild Earth guardians & Clait Braun), Wild UT Project and Great Old Broads for Wilderness

Greater Sage-Grouse

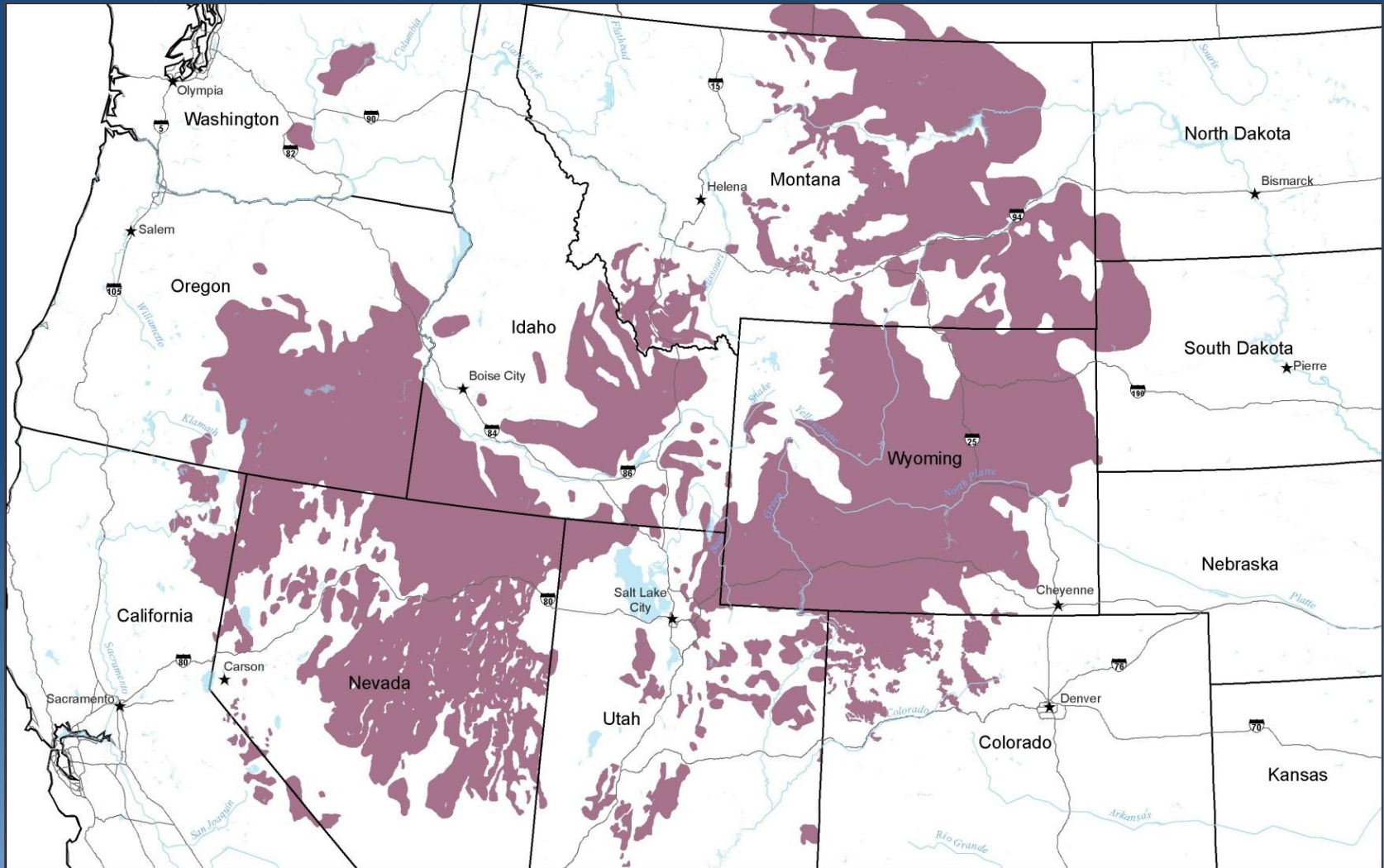


Greater Sage-grouse Range

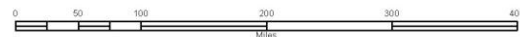

Gunnison Sage-grouse Range



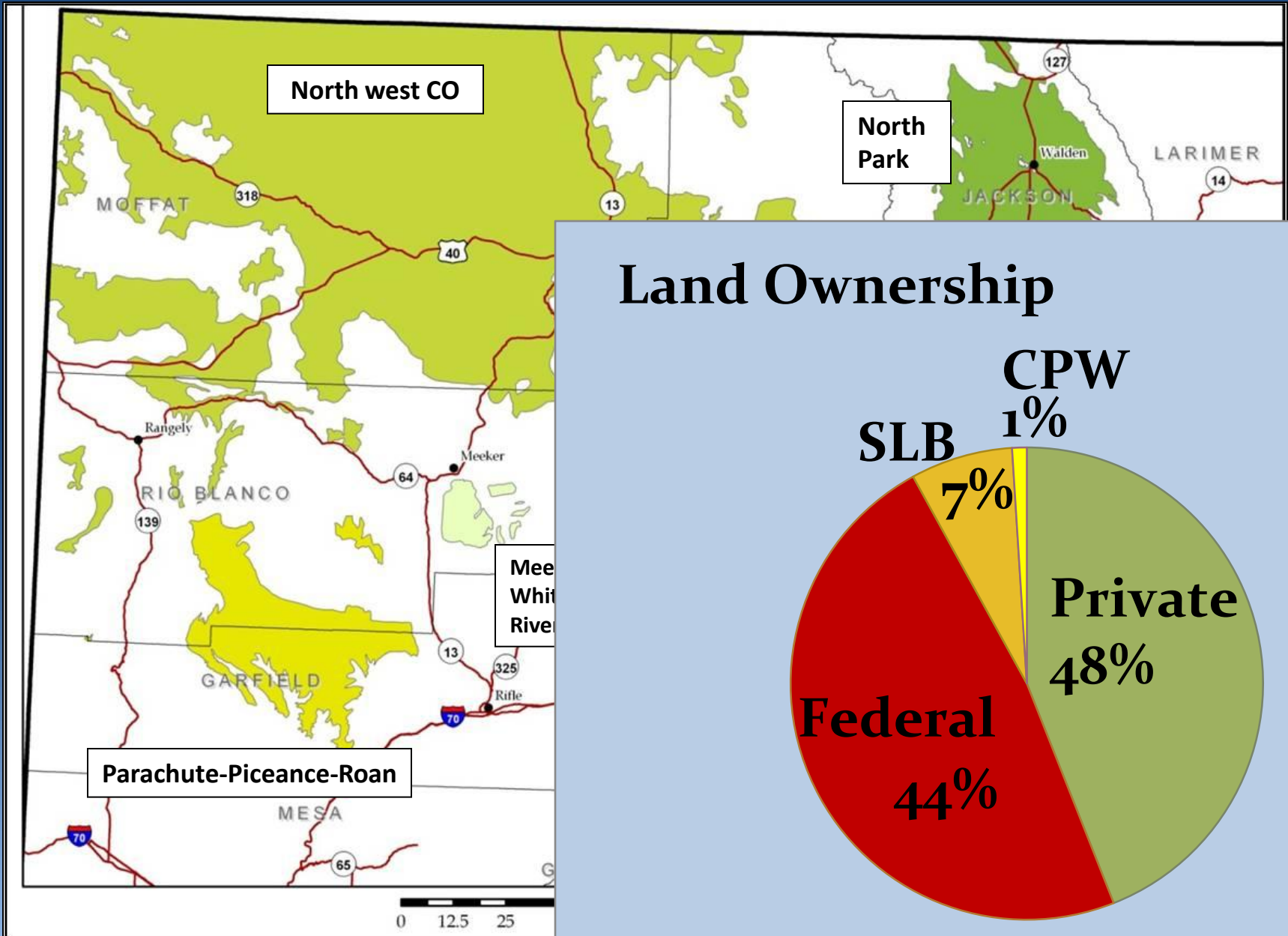
GrSG – Rangewide Distribution



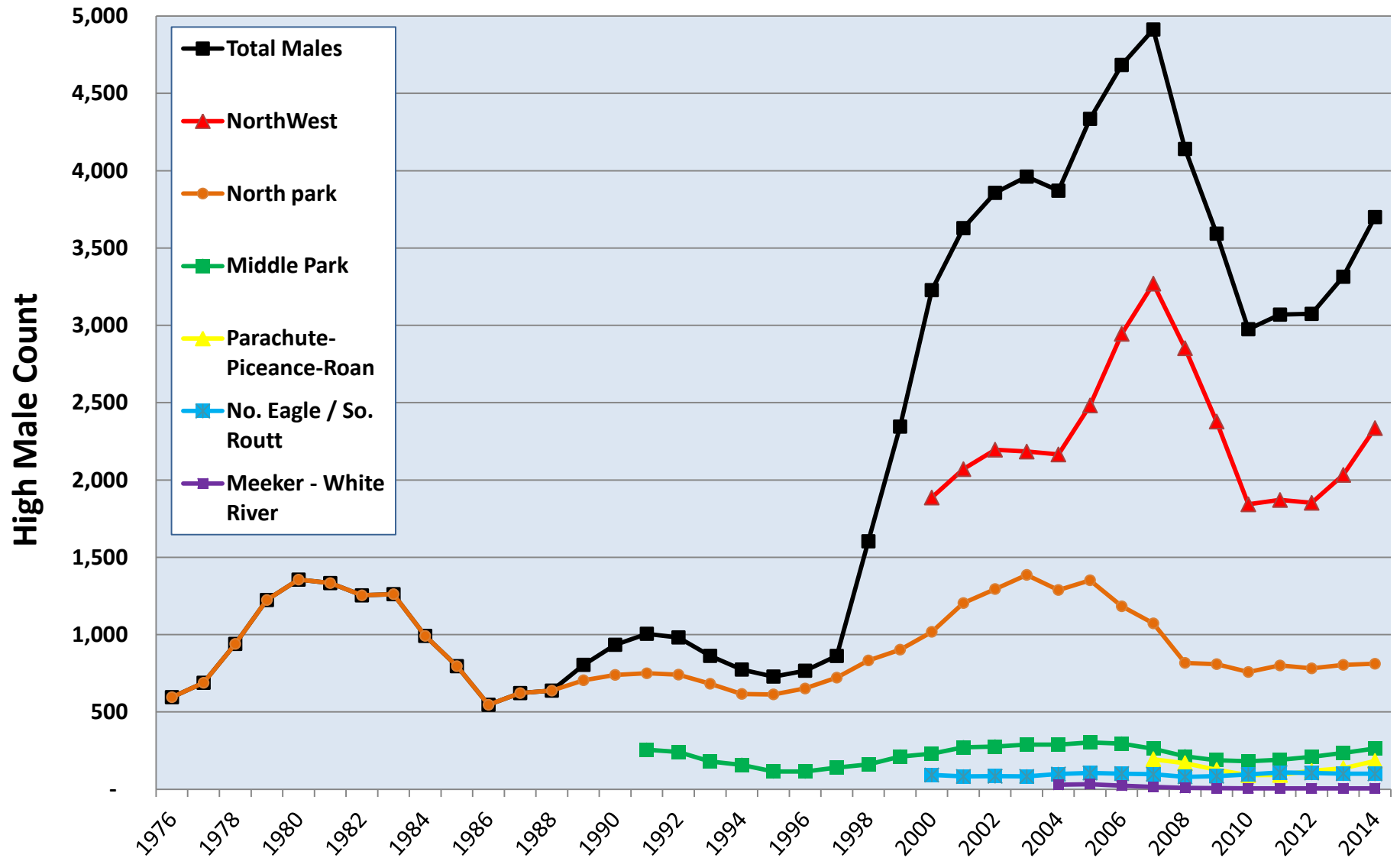
- ★ Capitals
- Highways
- States
- Hydrography
- Current Greater Sage Grouse Range Schroeder et al. 2004 and Colorado Overall Range



GrSG – Colorado Distribution



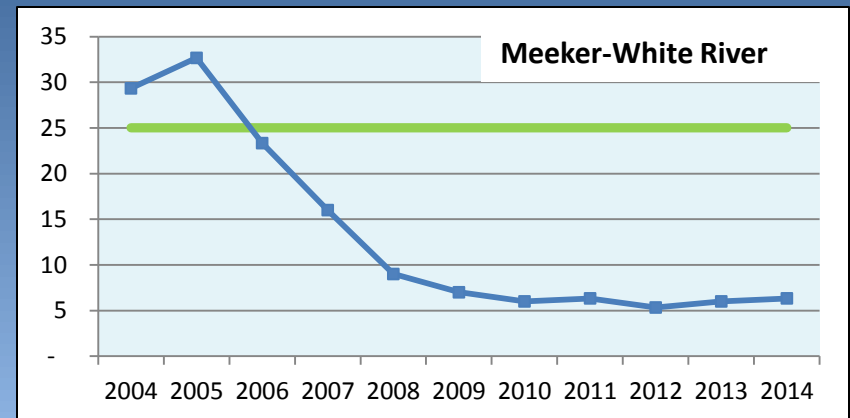
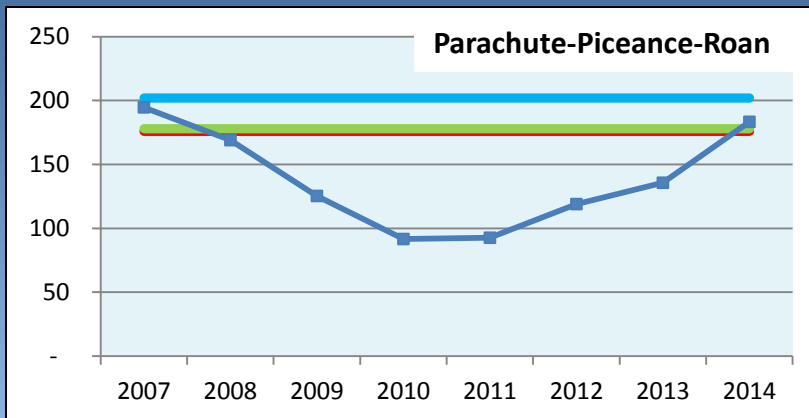
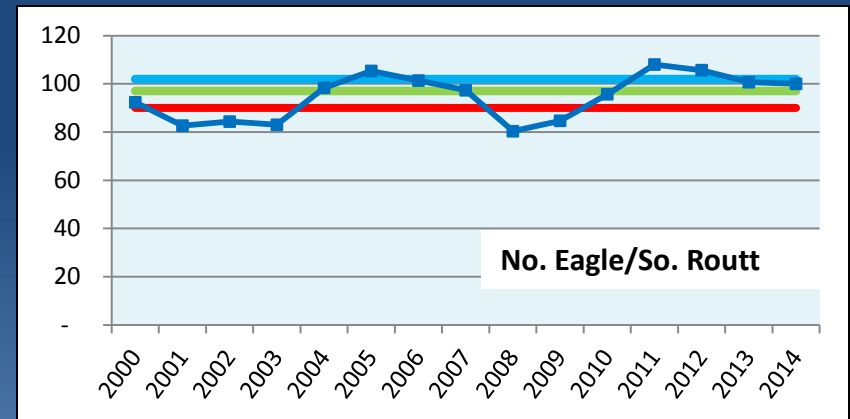
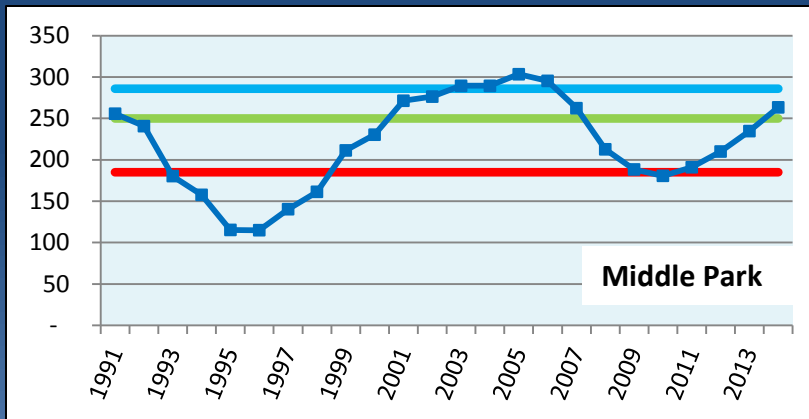
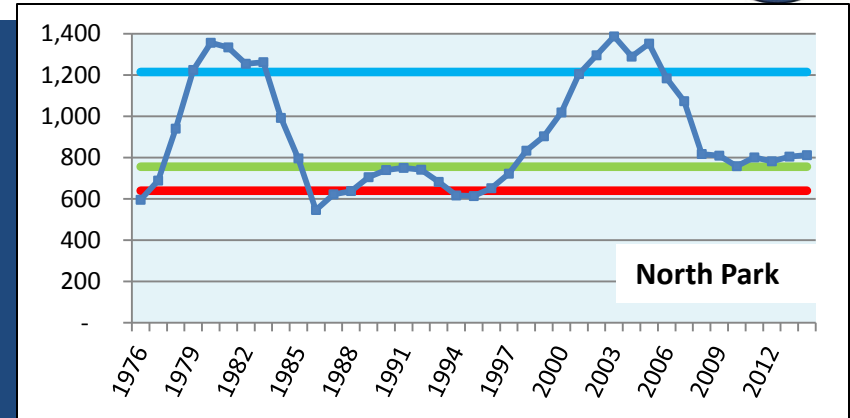
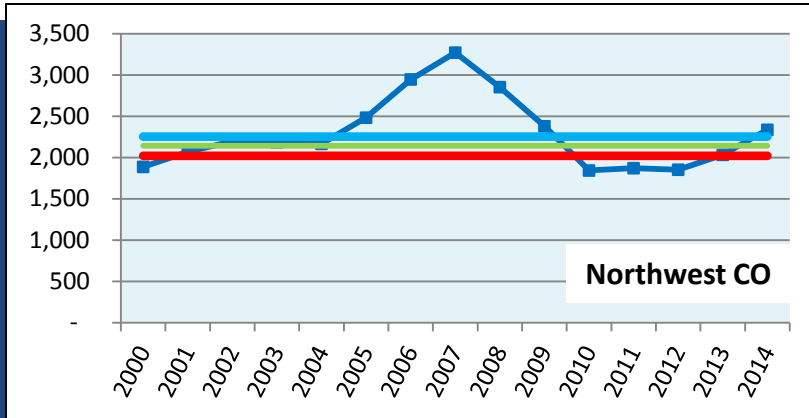
GrSG – Population Trends



GrSG – Population Trends



3 yr Average High Male Count



GrSG – BLM Update



BLM/USFS NWCO RMP & EIS

- Final expected early summer
 - Protest period (30 day)
 - Governor's Review (60 day)

- Record of Decision expected August



GrSG – Timeline



**1999-
2005**

8
petitions
received

2010

FWS Proposed
Rule –
Warranted but
precluded

Sept. 2016
FWS Final
Rule



2008

Colorado
Conservation
Plan

**Sept.
2015**

FWS
Proposed
Rule

Questions?

2013-05-27 6:40:03 AM M 1/1

38°F



HC600 HYPERFIRE

