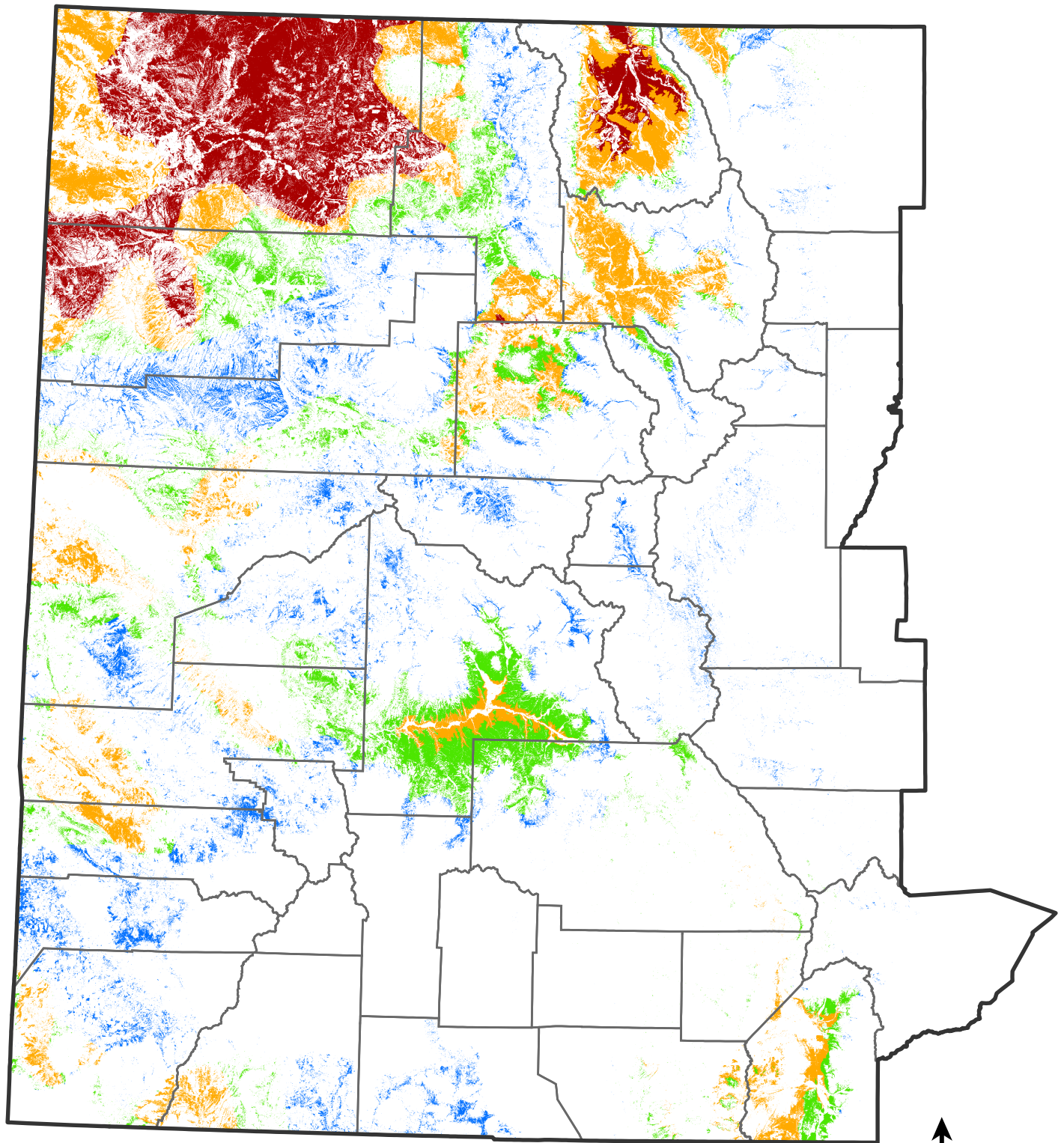









Figure 7-1. Group 1 species richness in sagebrush habitat in the assessment area.



Group 1 species:
Brewer's sparrow
sage sparrow
sage thrasher
sagebrush vole

Legend

-  Assessment Area Boundary
-  County Boundary
-  No sagebrush habitat for any species in the group
-  Sagebrush habitat for 1 species
-  Sagebrush habitat for 2 species
-  Sagebrush habitat for 3 species
-  Sagebrush habitat for 4 species