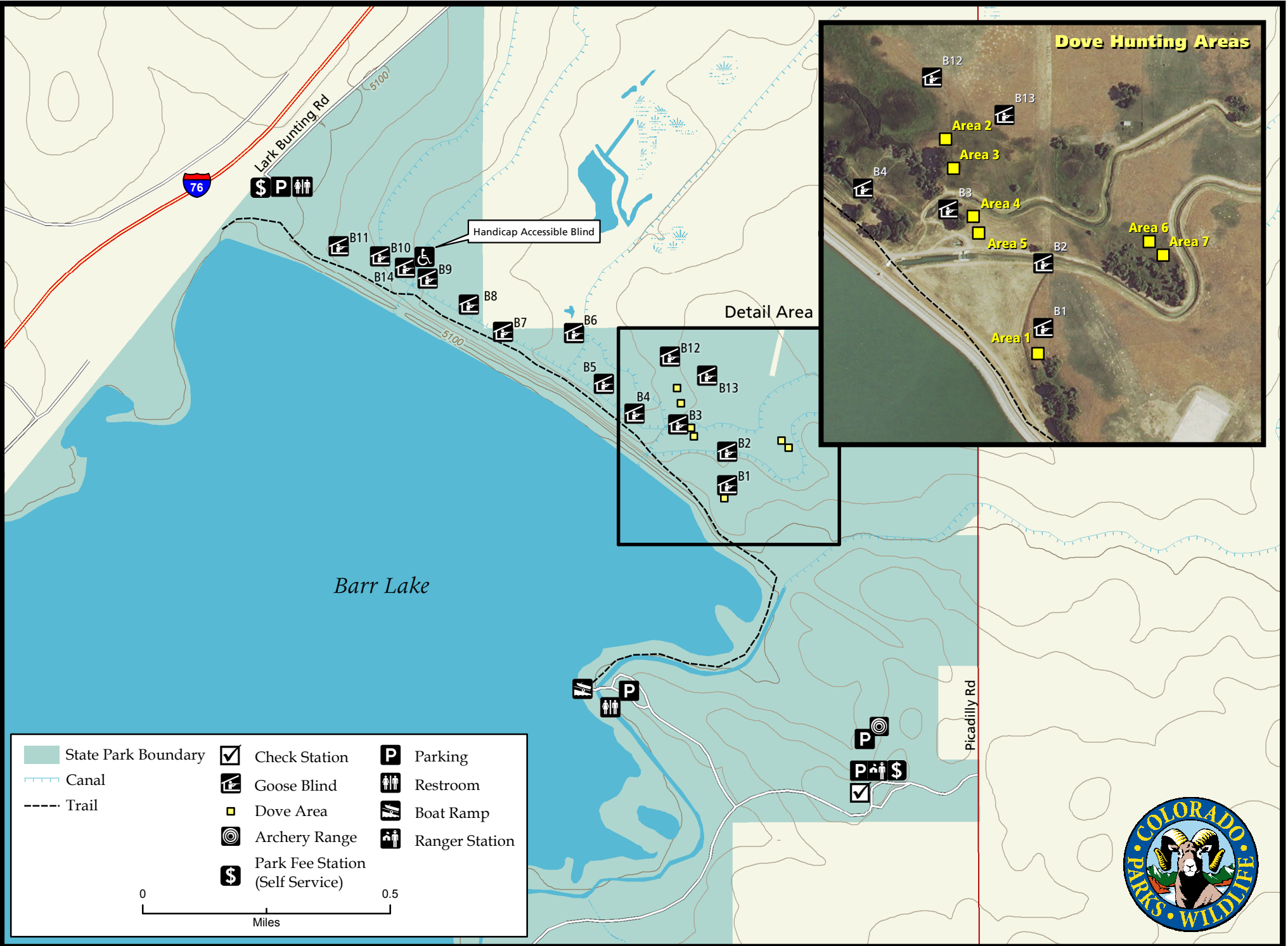
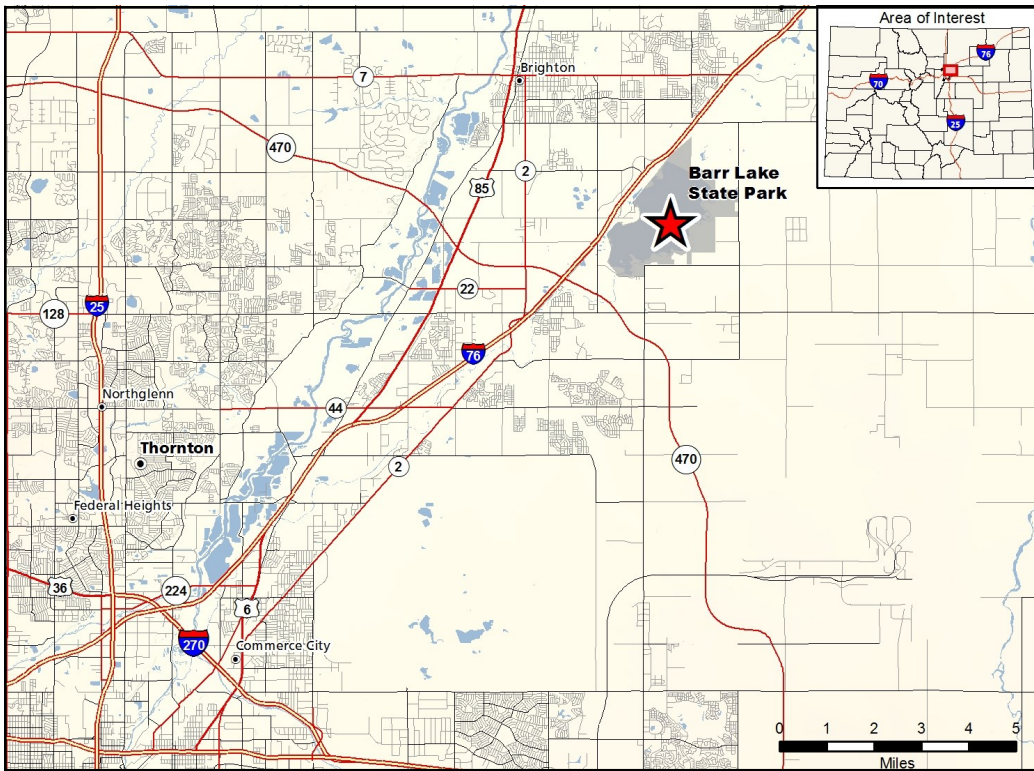


Barr Lake State Park





Barr Lake State Park Adams County

From Denver, take I-76 north-east, exit on Bromley Lake. Go east to Picadilly Road, then south to the park entrance.

From E-470 exit 34, 120th Ave, go east to Tower Road, turn left onto Tower Road and follow pavement to Picadilly Road. Make a left on Picadilly. Park entrance is about a mile ahead on the left.

Wildlife Area Offers:

Hunting:	Waterfowl
Fishing:	Warmwater
Recreation:	Archery Range, Hiking, Wildlife Viewing

Regulations:

In addition to or in place of those restrictions listed in regulation #900 the below listed provisions or restrictions apply. See Chapter 9, <http://cpw.state.co.us/aboutus/Pages/Regulations.aspx>

All State Park rules and regulations apply. Please see the web site: <http://cpw.state.co.us/placestogo/parks/BarrLake> or call the Ranger station at 303-655-1495 for current hunting information.

Note: A State Parks Pass will be required to park in the parking lot near Rocky Mountain Bird Observatory pass can be purchased on site at the self serve station in parking lot. Reservations will be available for Youth Duck hunting .

Chapter P-01

- No dogs or other pets shall be permitted in the wildlife refuge area.
- Visitors shall be required to remain on designated trails and boardwalks in the wildlife refuge area.
- No fishing or boating shall be permitted in the wildlife refuge area.
- Visitors shall be required to remain on the designated trails on Barr Lake Dam.
- No horses shall be permitted on the Barr Lake Dam.
- Only hand-propelled craft, sailboats and boats with electric trolling motors or gasoline motors of 10 horsepower or less shall be permitted.
- Only shotguns loaded with birdshot may be used for waterfowl hunting during the regular waterfowl hunting seasons, in the areas and at the times posted.

- Shotguns loaded with birdshot may also be used for dove hunting in the areas and at the times posted.
- All hunters must register prior to beginning hunting and check out at the conclusion of hunting, at the hunter registration area.

Chapter W-05

- A reservation is required to hunt and hunters must check-in and out at the check station. Reservations must be made in accordance with #504.I#901.A of these regulations.
- Waterfowl hunting is prohibited, except on opening day and Saturdays and Wednesdays. Hunters may only hunt the area reserved, and only from designated blinds with a maximum of three (3) hunters per blind.
- Dove hunting prohibited, except on opening day and Sundays and Mondays during the month of September. Dove hunters may only hunt from designated stations with a maximum of three (3) hunters per station.
- Hunting areas not reserved will be available on a first-come, first-serve basis after 5 am. Reserved hunting areas not occupied by 7:00 am are available on a first-come, first-serve basis.

More Information:

CPW NE Regional Office (Denver): (303) 291- 7227

Website: <http://cpw.state.co.us/>