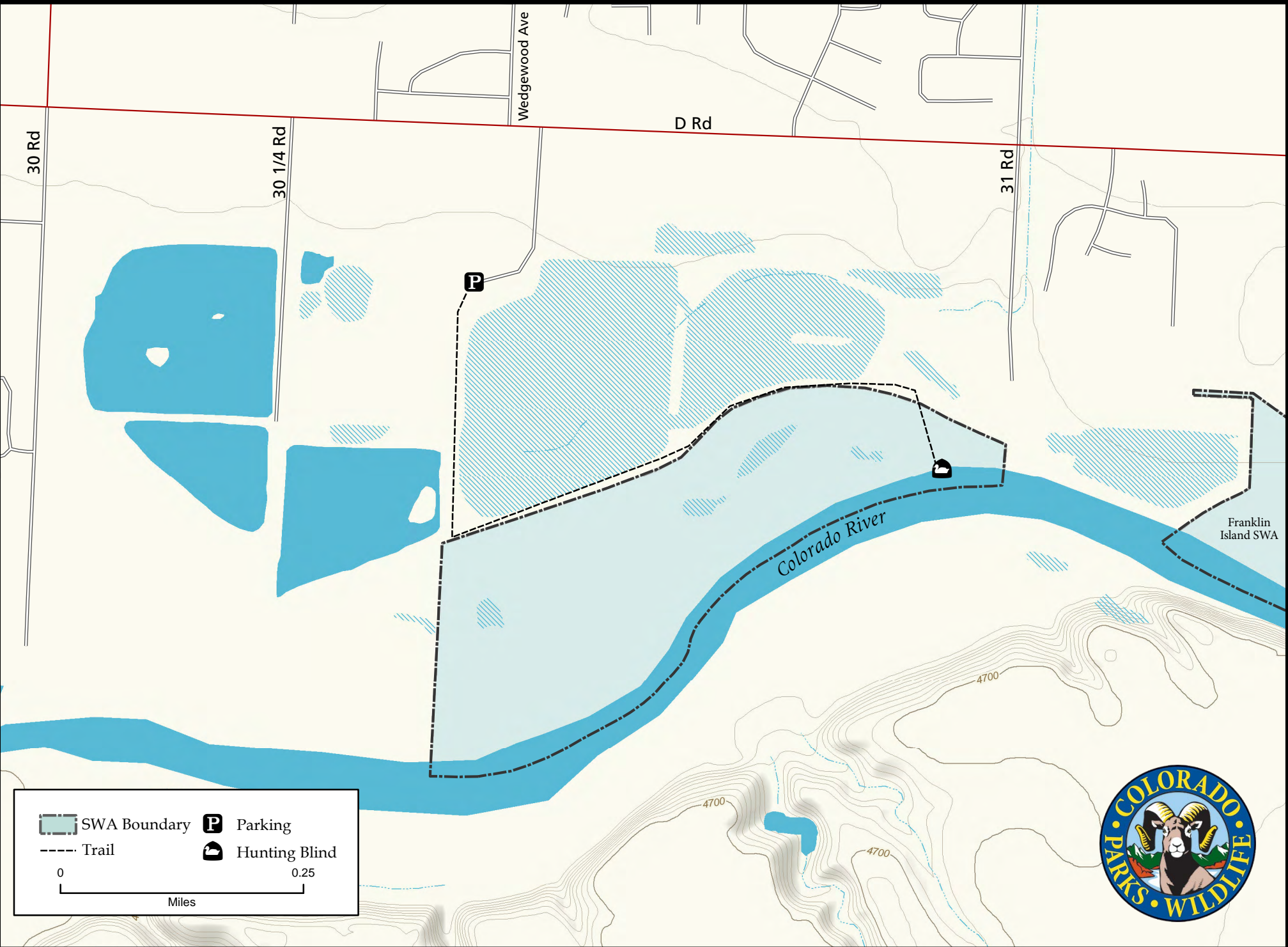


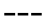




# Colorado River Island State Wildlife Area

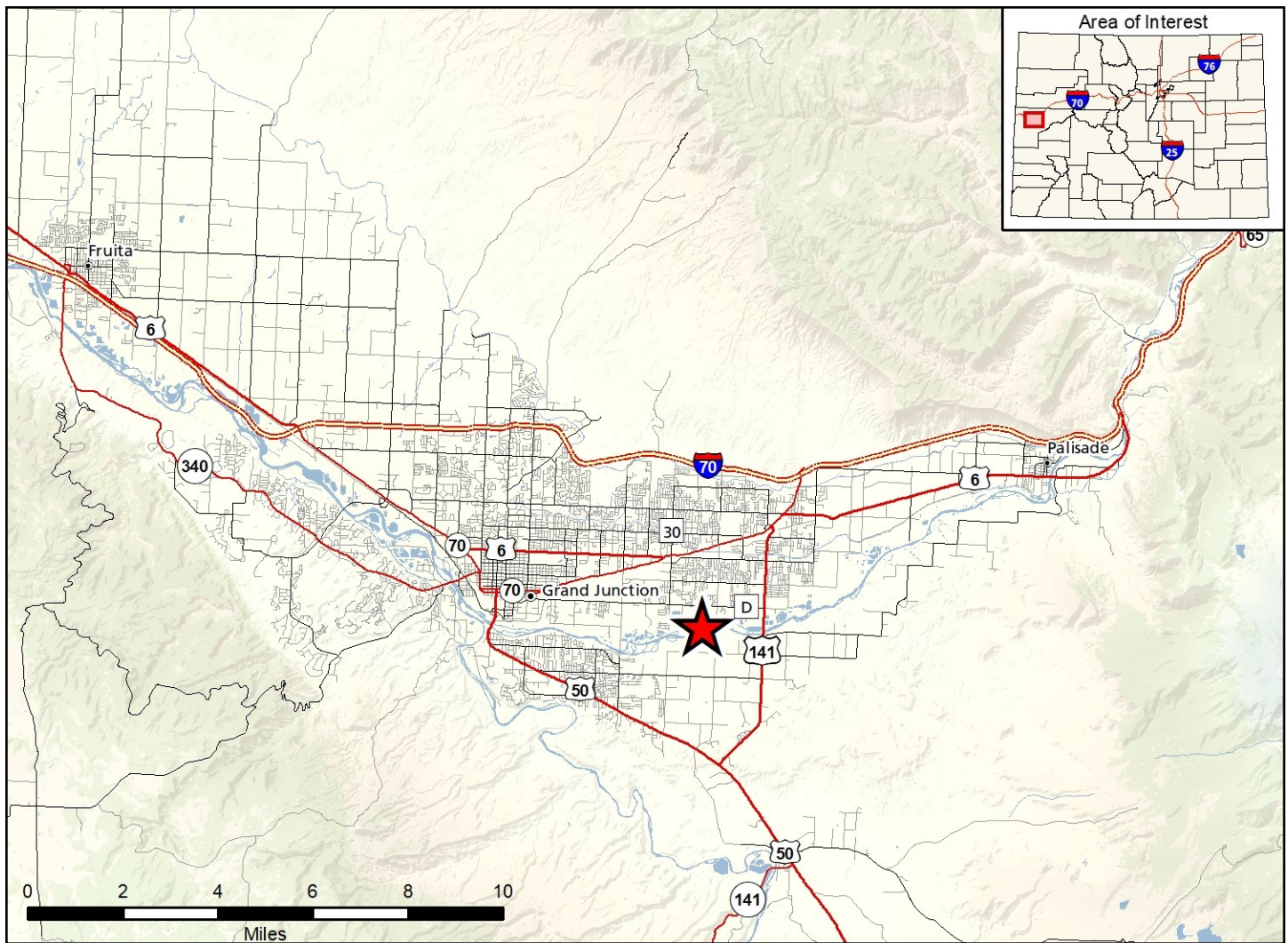


Franklin Island SWA

	SWA Boundary		Parking
	Trail		Hunting Blind
0  0.25 Miles			







## Colorado River Island SWA - Mesa County

From I-70 B head south on 30 Rd. Turn left (east) on D road and proceed ½ mile. Turn right into the parking area for the Colorado River Wildlife Area (this parking area is shared with a State Parks trailhead).

### Wildlife Area Offers:

Fishing: Warmwater  
 Hunting: Waterfowl  
 (GMU 30)  
 Recreation: Watchable Wildlife

### Restrictions:

- A. Hunting is prohibited, except for waterfowl hunting from designated blinds.
- B. Waterfowl hunting is allowed by reservation only.
- C. All hunter must comply with the Hunter Reservation System and reservations must be made through the Hunter Reservation System in accordance with #901.A of these regulations.
- D. Discharge of firearms or bows is prohibited, except while hunting.

### More Information:

CPW Office (Grand Junction): (970) 255-6100

Website: <http://cpw.state.co.us/>

*In addition to or in place of those restrictions listed in regulation #900 the above listed provisions or restrictions apply (see Chapter 9, <http://wildlife.state.co.us/RulesRegs/Regulations/>).*

*This product is produced and distributed by: Colorado Parks and Wildlife - GIS Group, 317 W. Prospect, Fort Collins, CO 80526. Information depicted hereon is for reference purposes only and is compiled from best available sources. Mapped property boundaries may or may not reflect actual legal holdings. Please observe and respect all marked boundaries and signs on the property. Regulations are subject to change - posted regulations at the individual SWA take precedence over any regulations referred to here. For further information, please see regulations brochures available at CPW offices or [cpw.state.co.us](http://cpw.state.co.us).*

Created 10/16/2023