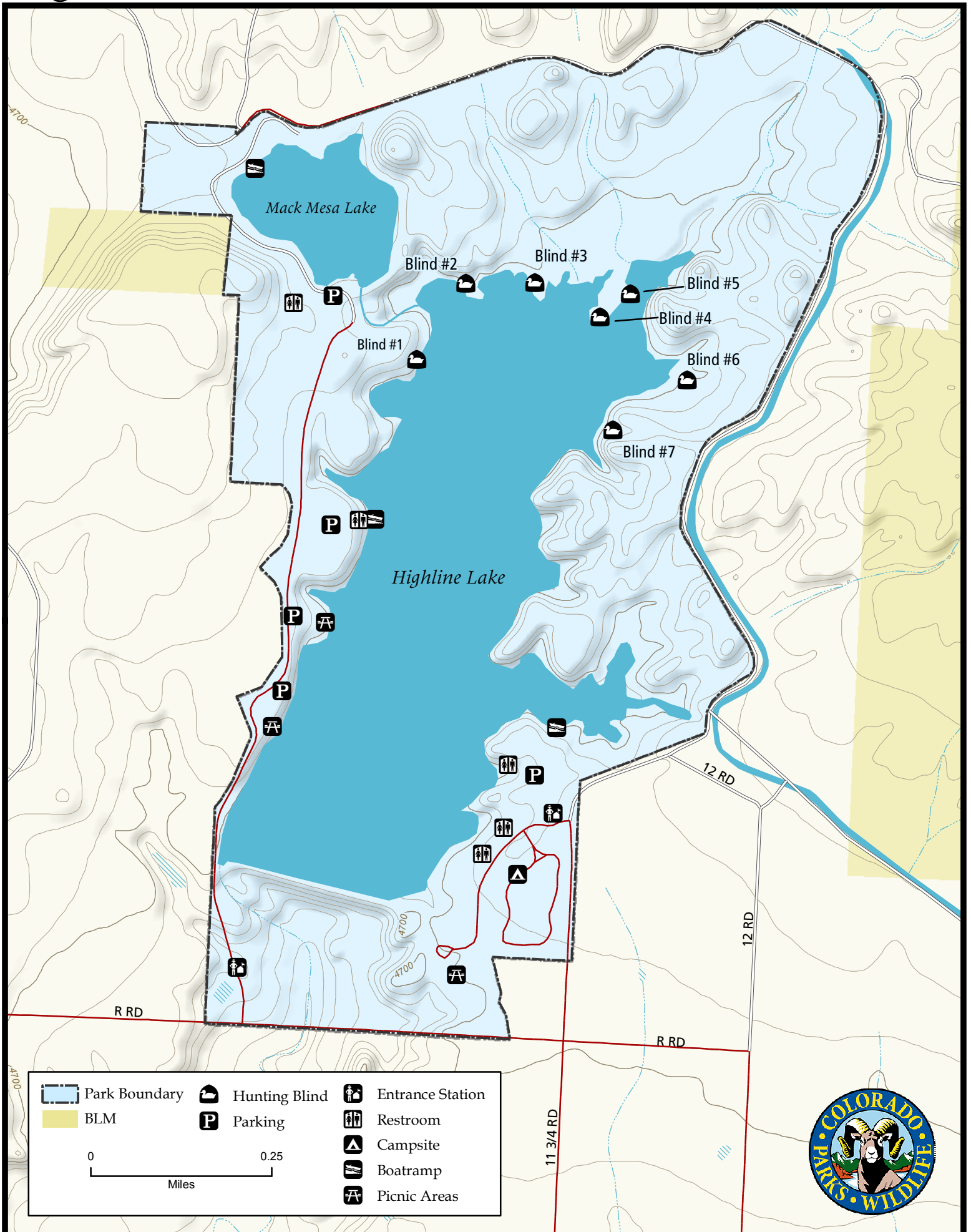
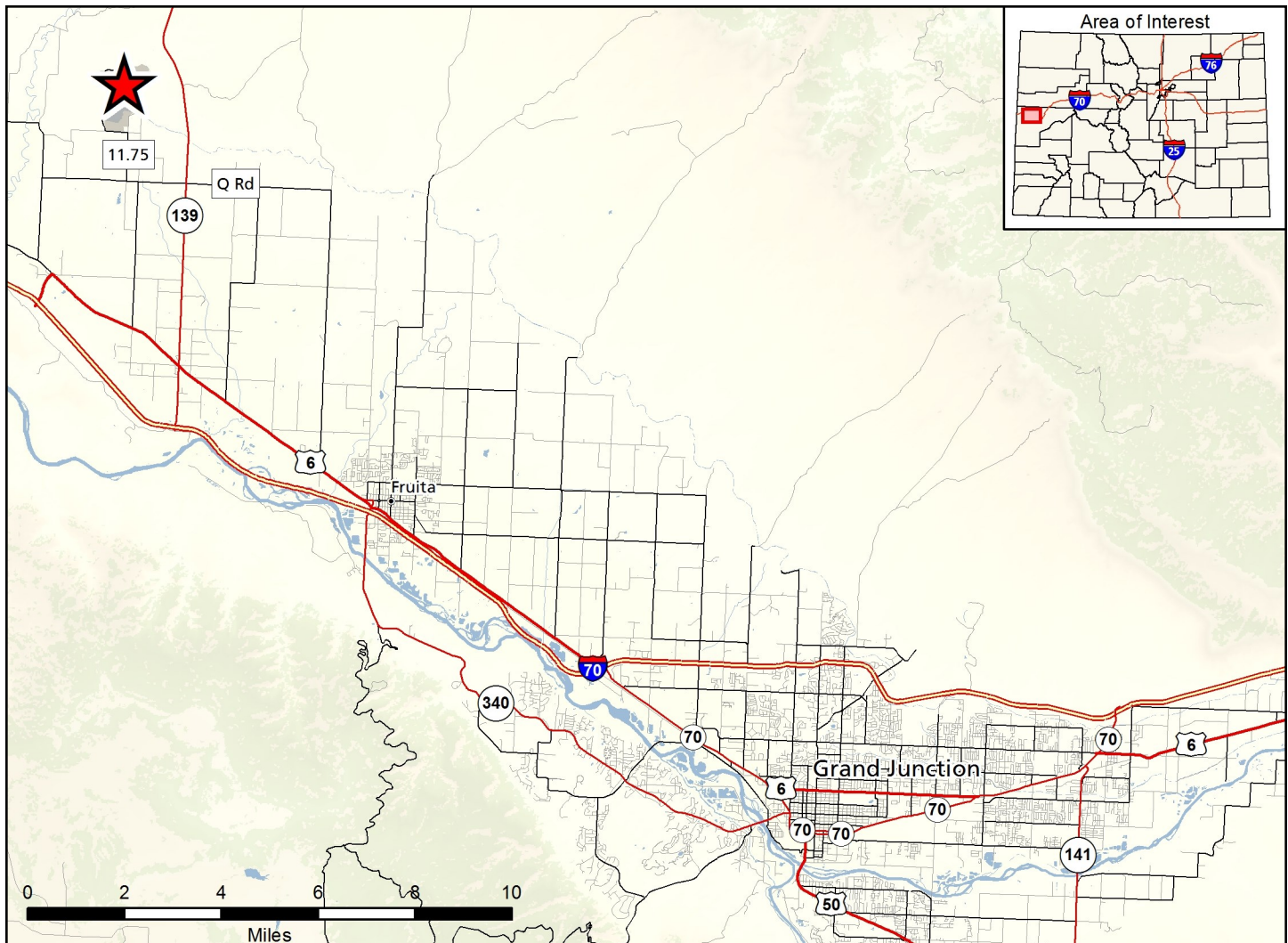


# Highline Lake State Park



	Park Boundary		Hunting Blind		Entrance Station
	BLM		Parking		Restroom
			Campsite		Boatramp
			Picnic Areas		





## Highline Lake State Park - Mesa County

Drive west on I-70 west from Grand Junction to Loma Exit, then north onto Colorado Highway 139 for five miles to Q Road. Go west on Q road for 1.2 miles, then turn north onto 11.8 Road for one mile to the park entrance.

All State Park rules and regulations apply. Please see the web site: <http://cpw.state.co.us/placestogo/Parks/highlinelake> or call the Ranger station at (970) 858-7208 for current hunting info.

### Regulations:

In addition to or in place of those restrictions listed in regulation #100 the below listed provisions or restrictions apply (see Ch. P-01 <http://cpw.state.co.us/aboutus/Pages/Regulations.aspx>).

#### Chapter P-01

- A. Only hand-propelled craft, sailboats and boats with electric motors shall be permitted on Mack Mesa Reservoir.
- B. Boats shall be prohibited on Highline Lake from the first day in October through the last day in February, except that hand-propelled craft may be used to set out and pick up decoys and retrieve downed waterfowl in the area open to hunting.
- C. Waterfowl hunting permitted in the areas and at the times posted. Only shotguns loaded with birdshot may be used for waterfowl hunting.
- D. Small game hunting permitted using only shotguns, in the areas and at the times posted.
- E. Reservations are required to hunt in accordance with #504.I.

F. Big game hunting is prohibited.

G. All hunters must register prior to beginning hunting and check out at the conclusion of hunting, at the hunter registration area.

#### Chapter W-05

1. Waterfowl and small game hunting on Highline Lake is prohibited on Saturdays and Sundays except for youth hunting waterfowl during the youth waterfowl season weekend.
2. Small game hunting is limited to that portion of Highline Lake State Park bounded on the north and the east by the park property boundaries; on the south by the no wake buoy line; and on the west by Mack Mesa Reservoir.
3. A reservation is required to hunt waterfowl. Reservations must be made in accordance with #504.I of these regulations.
4. Hunters may only hunt the area reserved and only from designated blinds with a maximum of four (4) hunters per blind.

#### More Information:

Ranger office (Highline Lake SP): (970) 858-7208

CPW Website: <http://cpw.state.co.us/>