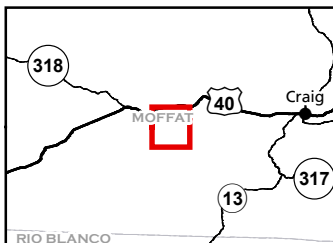
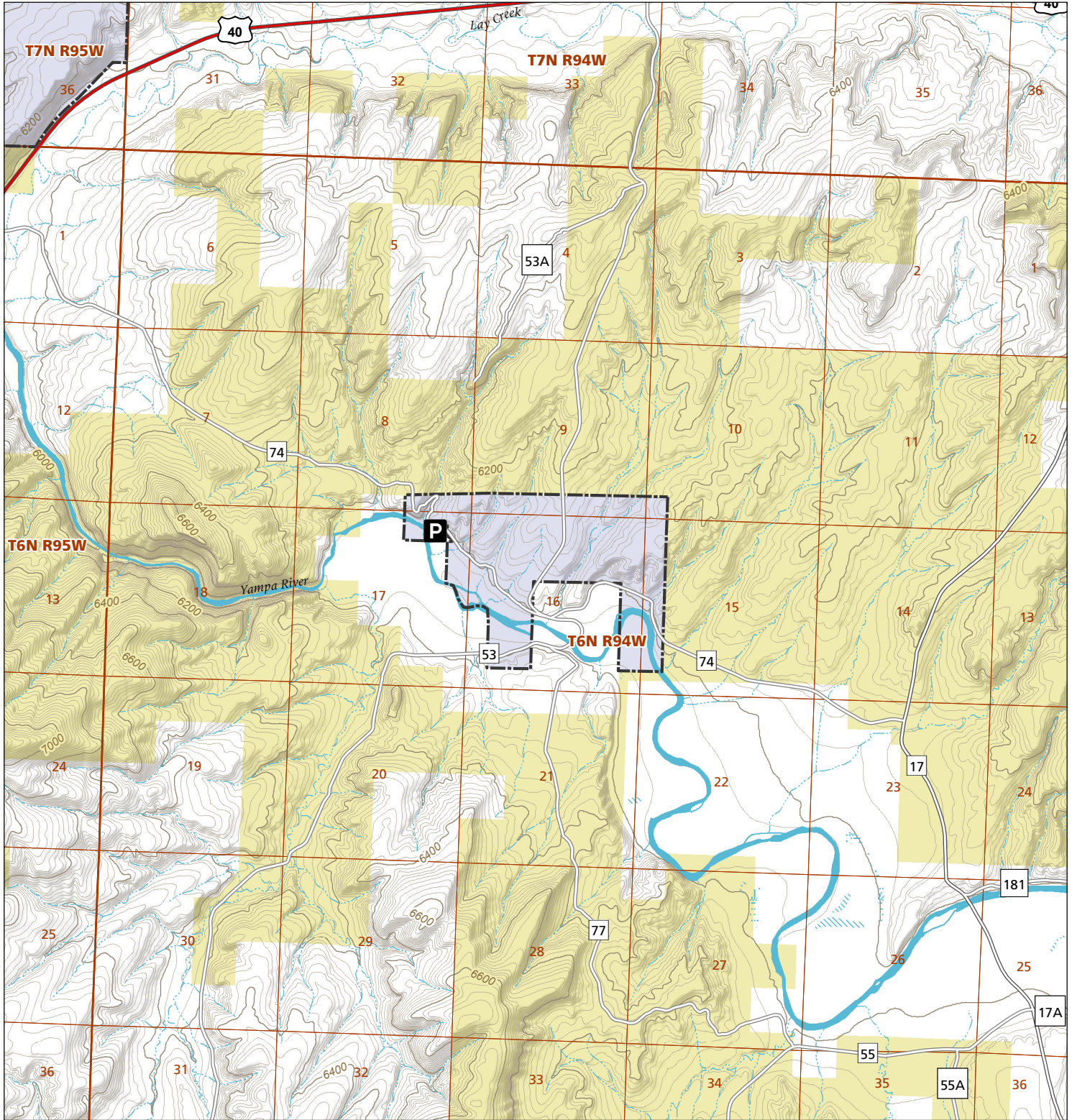


Juniper Hot Springs

STL Hunting and Fishing Access Program

Please see the current Colorado State Recreation Lands brochure for listing of land use regulations and access points for this property and other SLB parcels open for wildlife related recreation. Also refer to the CPW Fishing and Hunting information brochure for current hunting and fishing regulations.

Map Updated: 9/18/2023



-  STL Boundary
-  BLM
-  Parking
-  No Public Access

