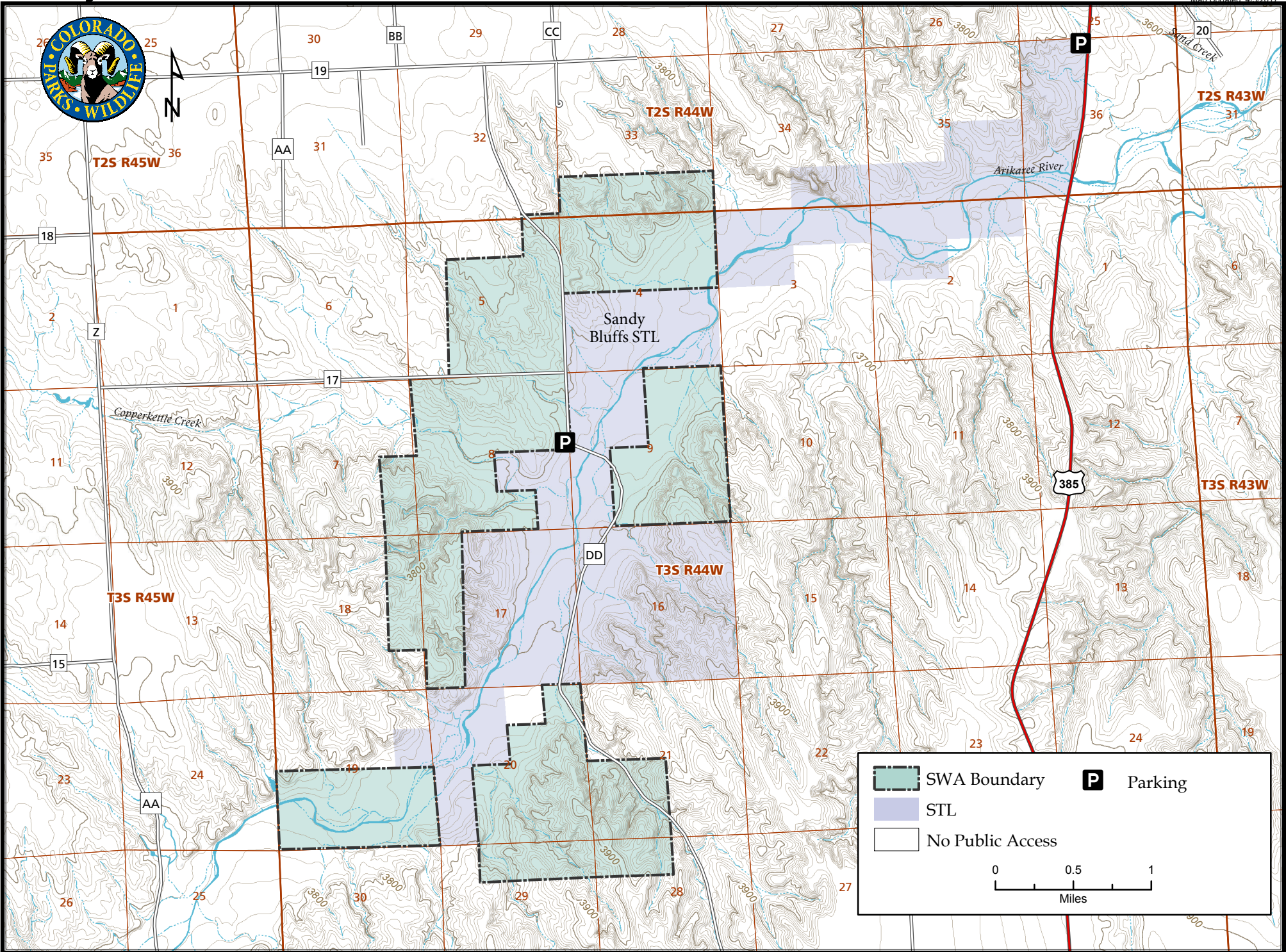


# Sandy Bluff State Wildlife Area & State Trust Land

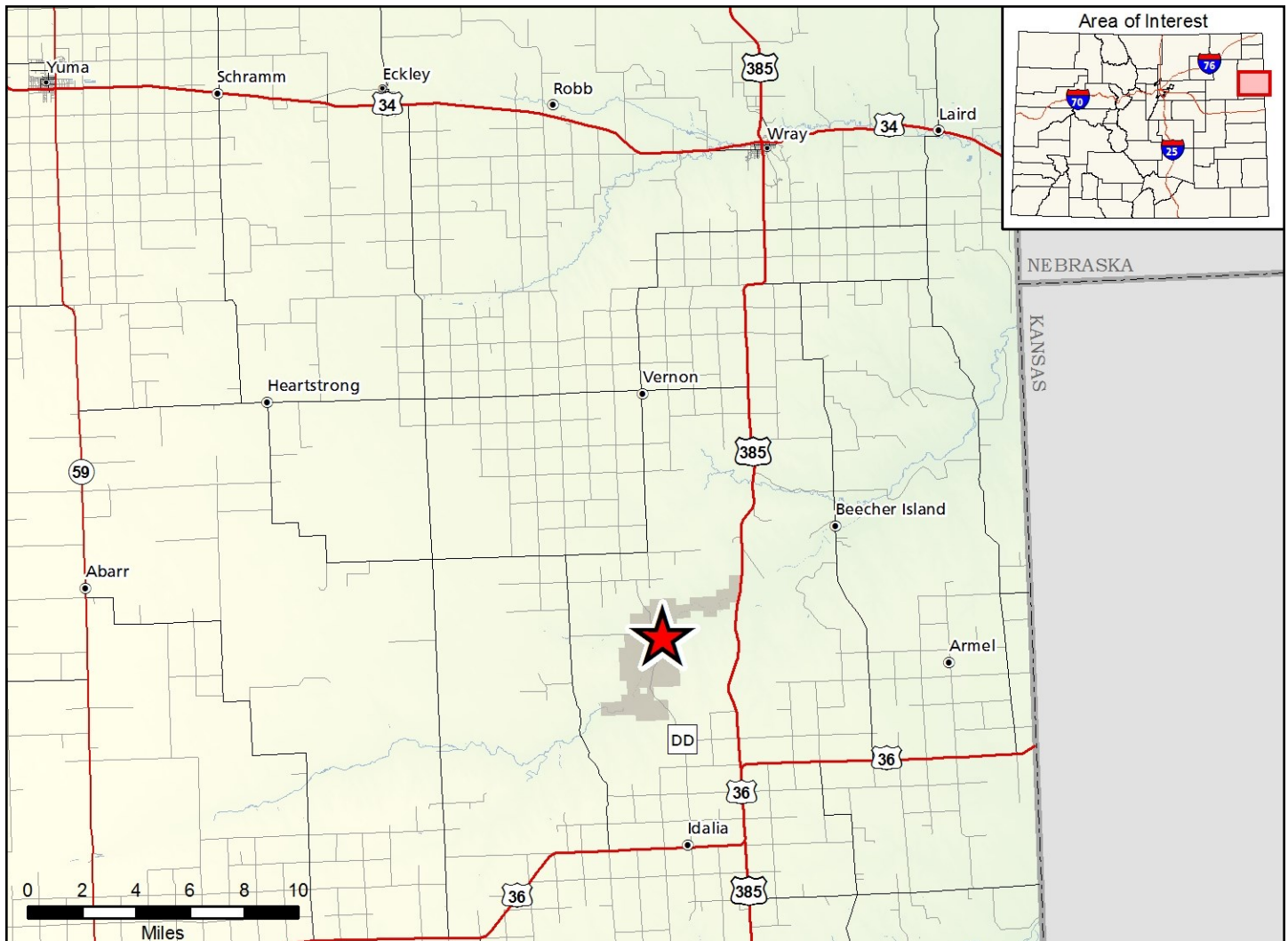
Map Updated: 4/5/2017



	SWA Boundary		Parking
	STL		
	No Public Access		

0 0.5 1  
Miles





**Sandy Bluffs SWA & STL - Yuma County**  
 From Idalia, go 8.5 miles North on CR DD at Arikaree River.

**Wildlife Area Offers:**

Hunting: Small game, turkeys and deer.  
 (GMU 102)

**Regulations:**

*In addition to or in place of those restrictions listed in regulation #900 the below listed provisions or restrictions apply (see Ch. 9, <http://cpw.state.co.us/aboutus/Pages/Regulations.aspx>).*

- A. Public access is prohibited from June 1 through August 31.
- B. Public access is prohibited from 9:00 p.m. - 4:00 a.m.
- C. Dog training is prohibited.

**More Information:**

CPW Office (Brush): (970) 842-6300  
 CPW Website: <http://cpw.state.co.us/>

This product is produced and distributed by: Colorado Parks and Wildlife - GIS Group, 317 W. Prospect, Fort Collins, CO 80526. Information depicted hereon is for reference purposes only and is compiled from best available sources. Mapped property boundaries may or may not reflect actual legal holdings. Please observe and respect all marked boundaries and signs on the property. Regulations are subject to change - posted regulations at the individual SWA take precedence over any regulations referred to here. For further information, please see regulations brochures available at CPW offices or [cpw.state.co.us](http://cpw.state.co.us).