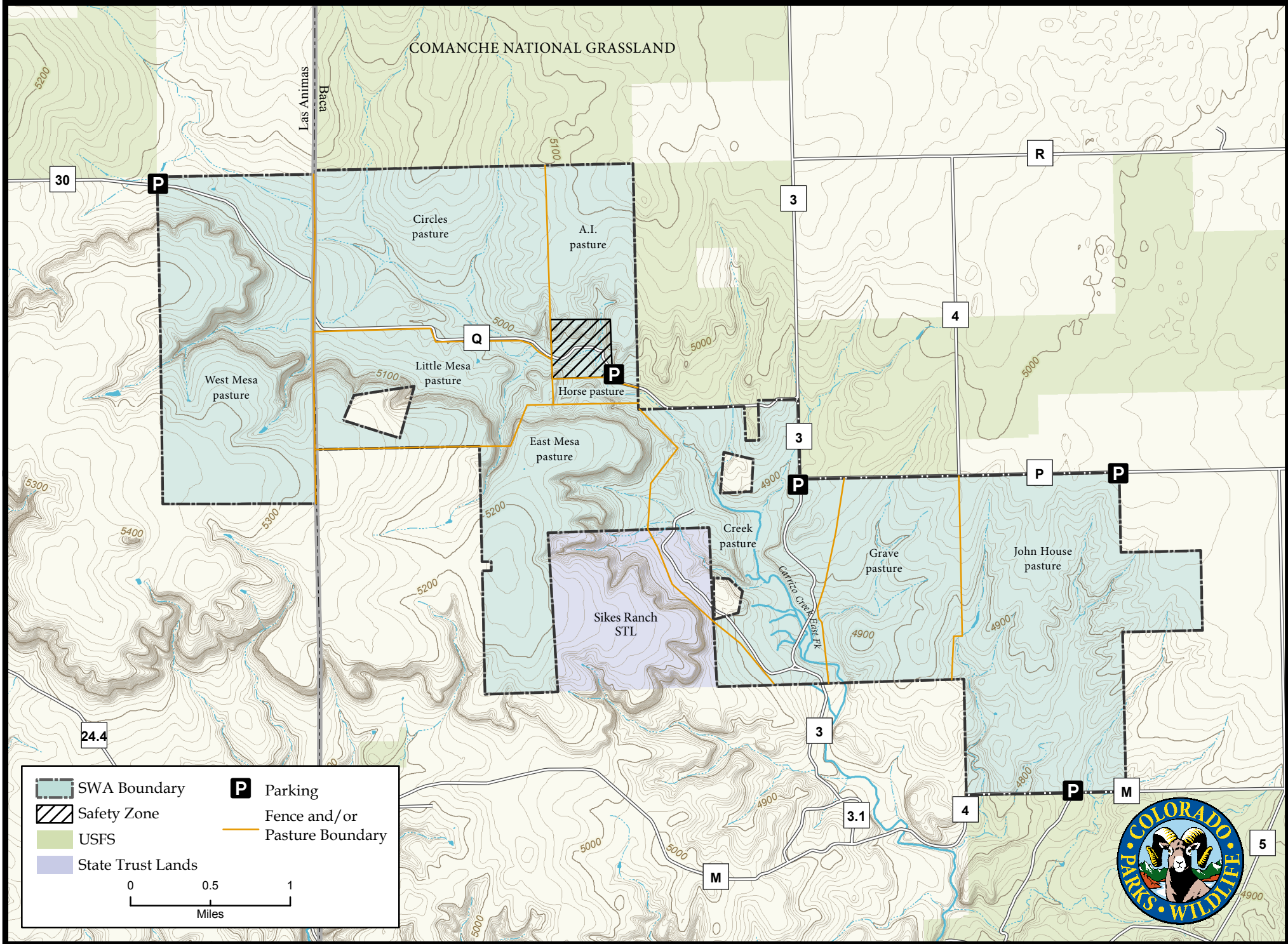
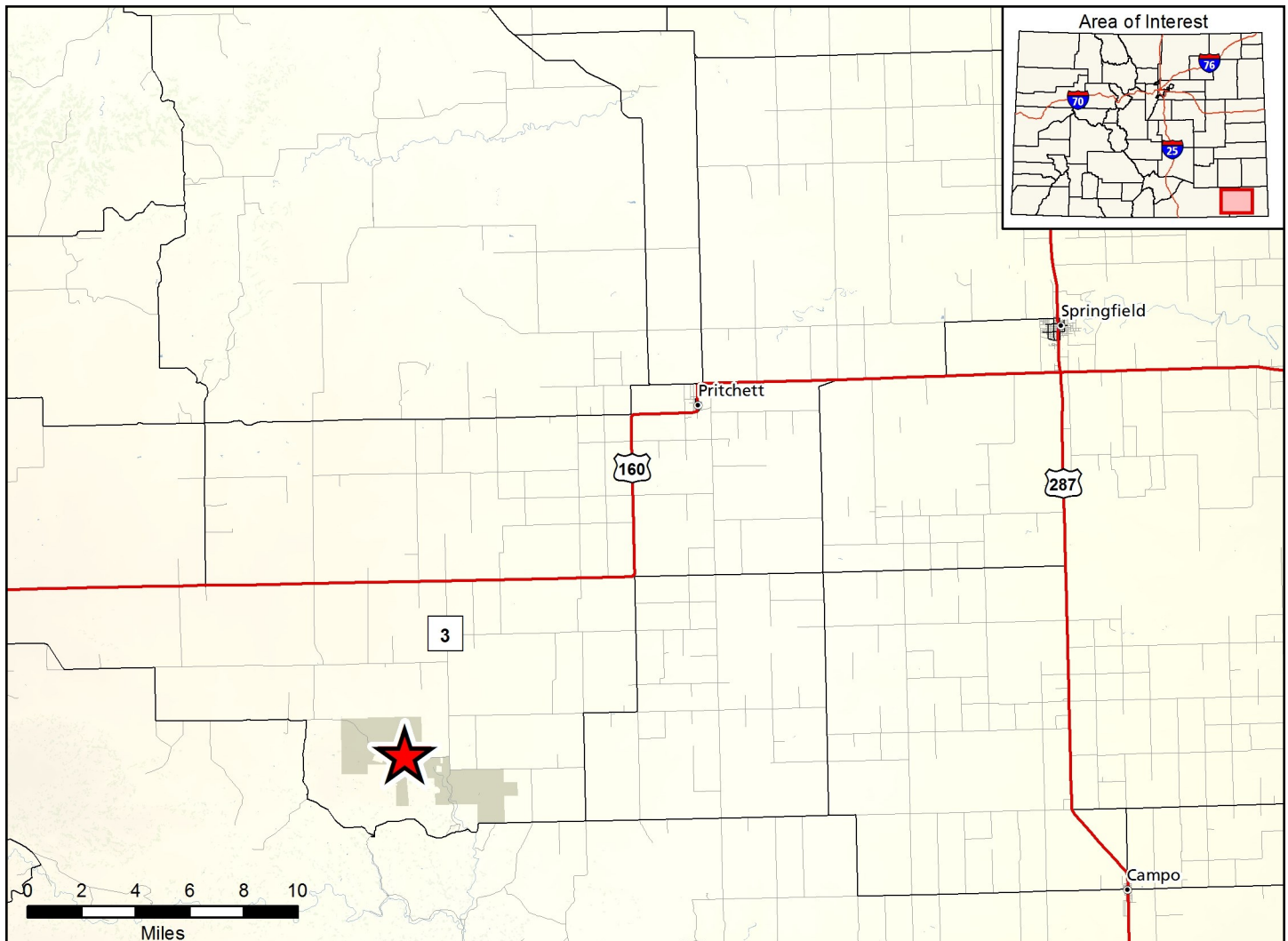


Sikes Ranch State Wildlife Area

May 2018





Sikes Ranch SWA - Baca County

From Pritchett, go West on Hwy. 160 to CR 3. Go South on CR 3 approximately 8 miles.

Wildlife Area Offers:

Hunting: Deer, Turkey, predators
 Fishing: Green sunfish, black bullhead catfish
 Recreation: Hiking, Wildlife Viewing

Regulations:

In addition to or in place of those restrictions listed in regulation #900 the below listed provisions or restrictions apply (see Chapter 9, <http://wildlife.state.co.us/RulesRegs/Regulations/>).

A. Public access is prohibited from one (1) hour after sunset until one (1) hour before sunrise, except when an animal is harvested the successful hunter may remain as long as necessary to remove the animal or when authorized by a night hunting permit.

- B. Public access is prohibited in the building envelope and designated safety zones, or as posted.
- C. Parking and access is allowed from designated parking areas only.
- D. Trapping is prohibited, except by permit only. Permit holders shall have their permit on their person at all times while trapping. Permits may be obtained by calling the Lamar Service Center.

More Information:

CPW Office (Lamar): (719) 336 -6600
 CPW Website: <http://cpw.state.co.us>