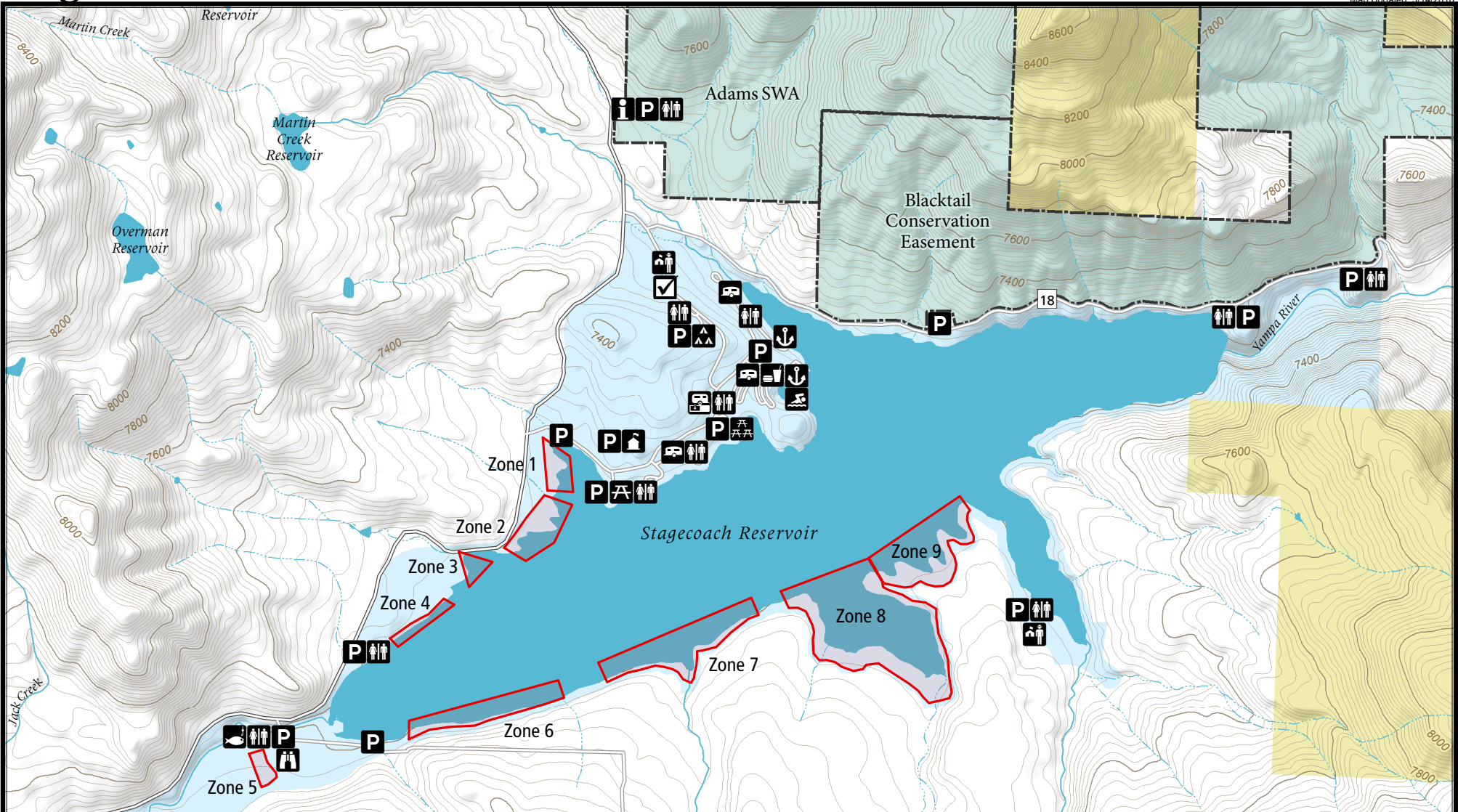


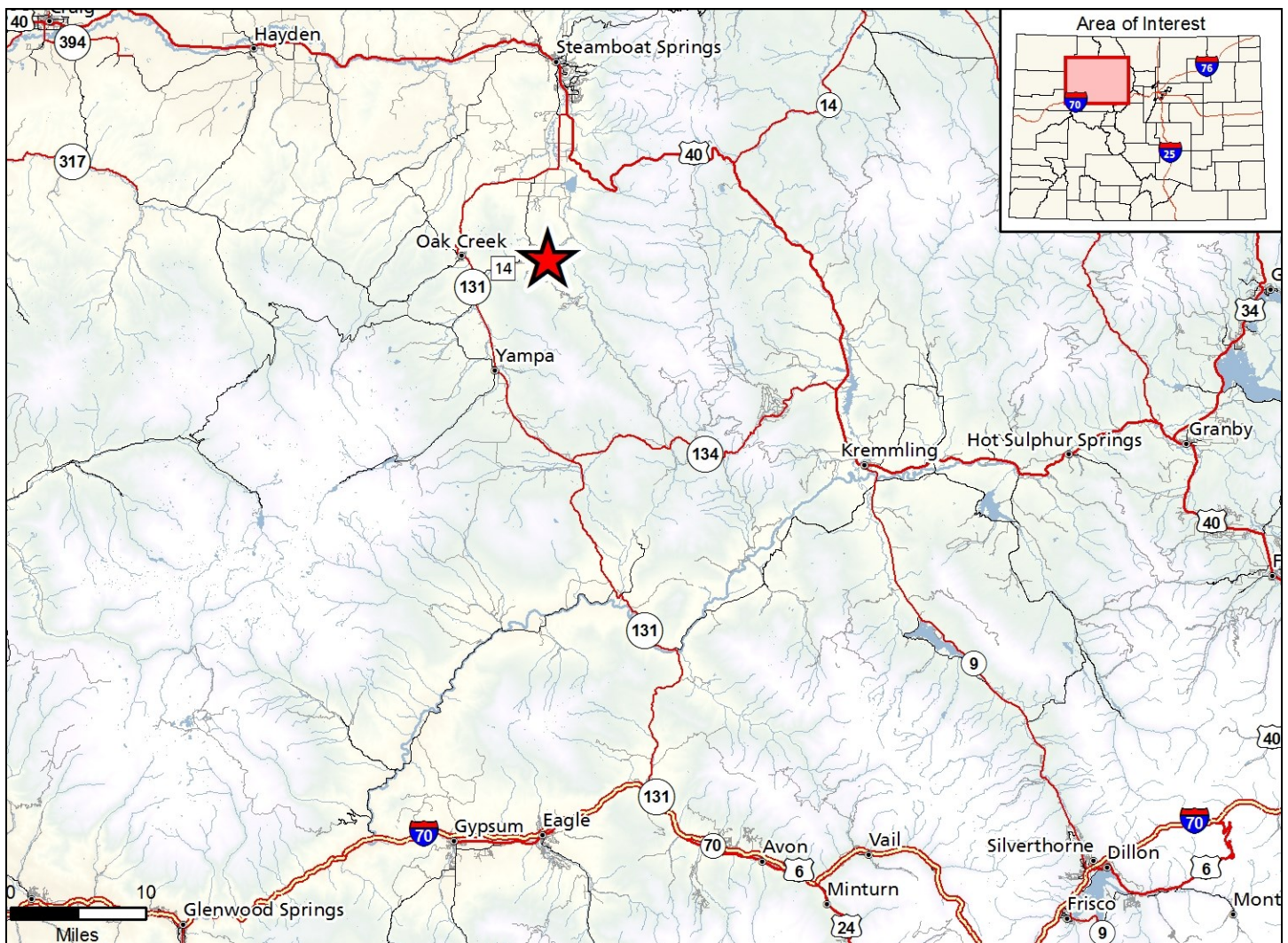
# Stagecoach State Park

Map Updated: 5/14/2018



SWA Boundary	Entrance Station	Fishing	Marina
Hunting Zone	Check Station	Group Campground	RV Campground
BLM	Info Source	Group Picnic Area	RV Dump Station
State Park	Parking	Picnic Area	Swim Beach
No Public Access	Restroom	Wildlife Watching Area	Concession
	Park Office		





### Stagecoach State Park - Routt County

From I-70 at Silverthorne, take Hwy. 9 north for 38 miles. Go west on Hwy. 40 for 6 miles to Hwy. 134. Go W on Hwy. 134 for 27 miles to Hwy. 131. Go N 17 miles to CR 14 and follow signs.

#### Regulations:

All State Park rules and regulations apply. Please see the web site: <http://cpw.state.co.us/placestogo/Parks/stagecoach> or call the Ranger station at (970) 736-2436 for current hunting information.

#### Chapter P-01

A. During the period beginning the Tuesday after Labor Day and continuing through the Friday prior to Memorial Day, only bows and arrows including crossbow and hand-held bow, unless otherwise restricted, and shotguns loaded with birdshot may be used for hunting during hunting seasons on the western half of the reservoir.

#### Chapter W-05

1. Waterfowl hunting is limited to designated waterfowl hunting zones only, with a maximum of six (6) hunters per zone.
2. Waterfowl hunting on this property is by reservation only. Reservations must be made in accordance with #504.I of these regulations. Hunters with reservations may only hunt the hunt zone specified on the reservation. Hunters must follow check-in and out procedures as posted at the property.
3. Hunting zones not reserved are available on a first-come, first-serve basis after 5:00 am. Reserved hunting zones unoccupied by 7:00 am will be available on a first-come, first-serve basis. However, any hunting zone must be yielded at any time upon request of a hunter holding a valid and active reservation for that zone.