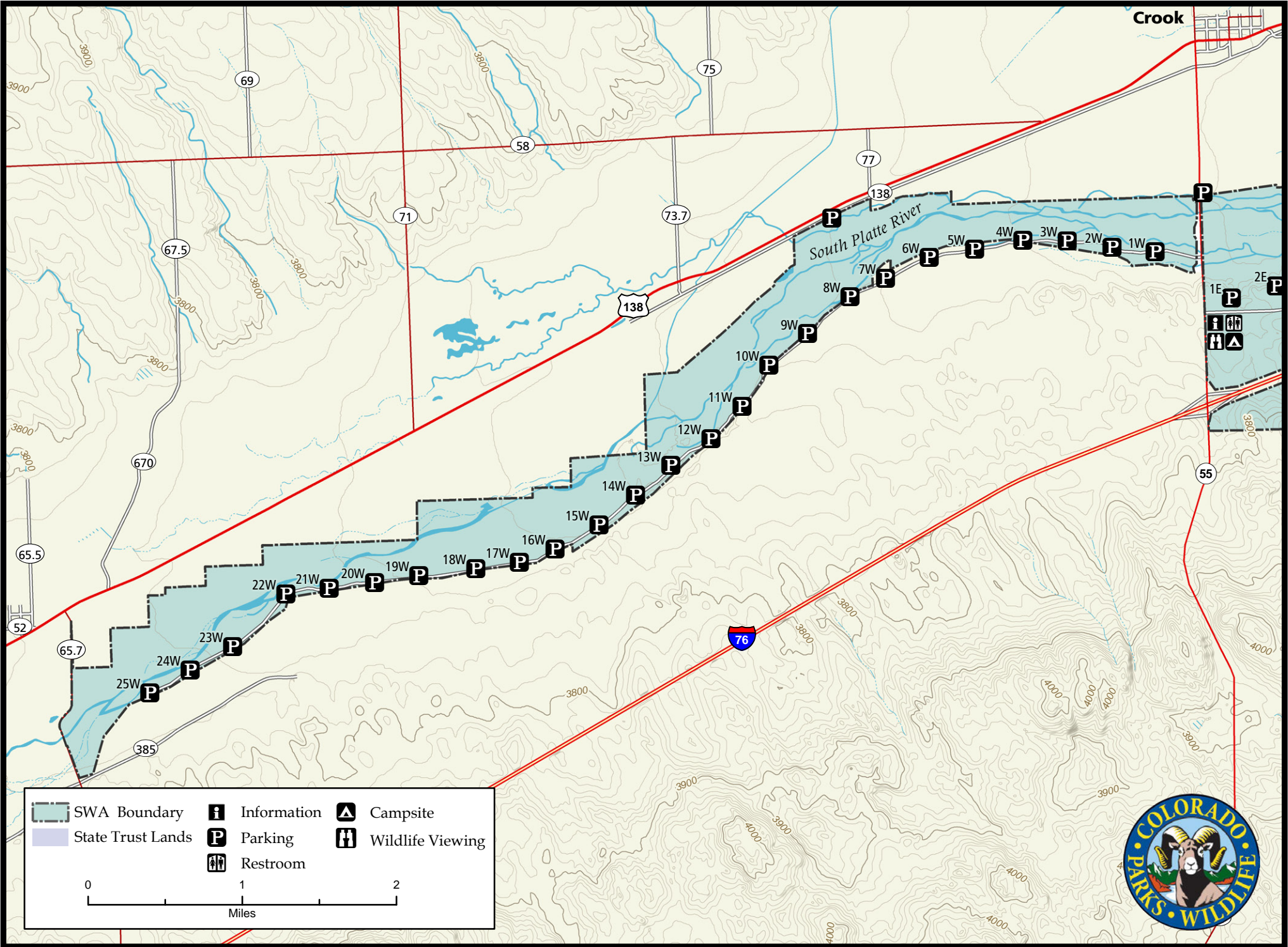
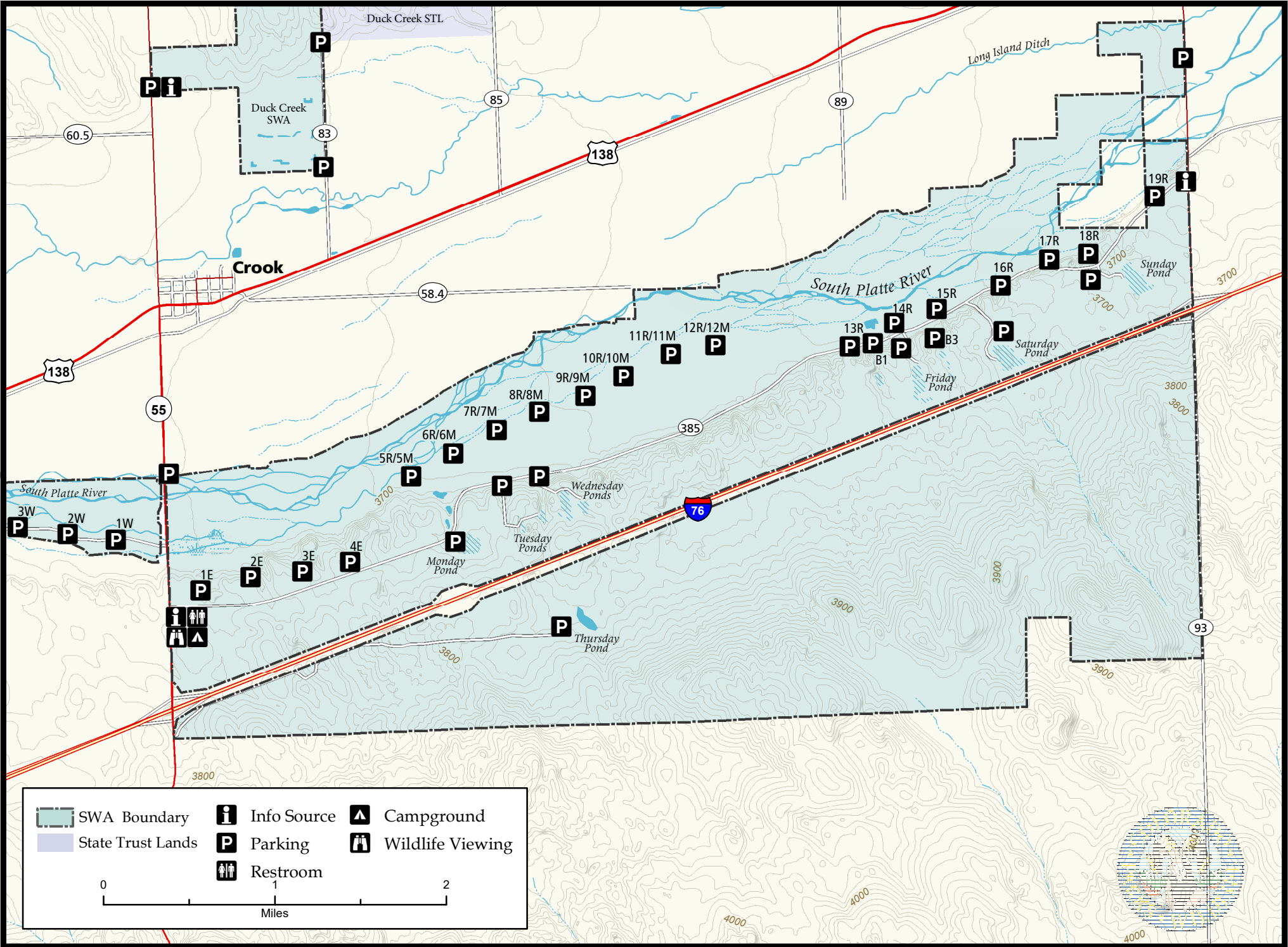
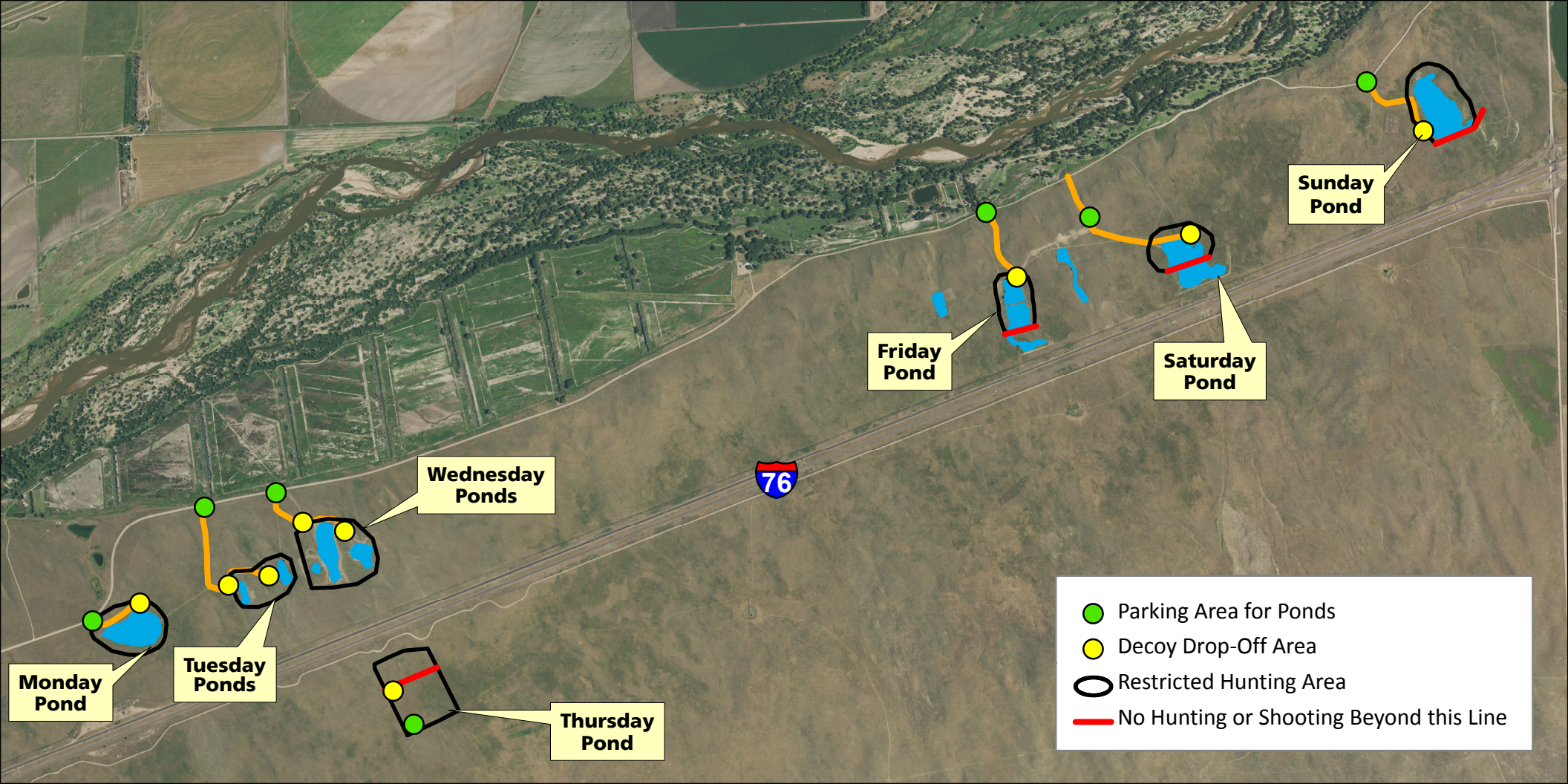


Tamarack Ranch State Wildlife Area (west portion)



Tamarack Ranch State Wildlife Area (east portion)





Sunday Pond

Saturday Pond

Friday Pond





Wednesday Ponds

Tuesday Ponds

Monday Pond

Thursday Pond

76

-  Parking Area for Ponds
-  Decoy Drop-Off Area
-  Restricted Hunting Area
-  No Hunting or Shooting Beyond this Line

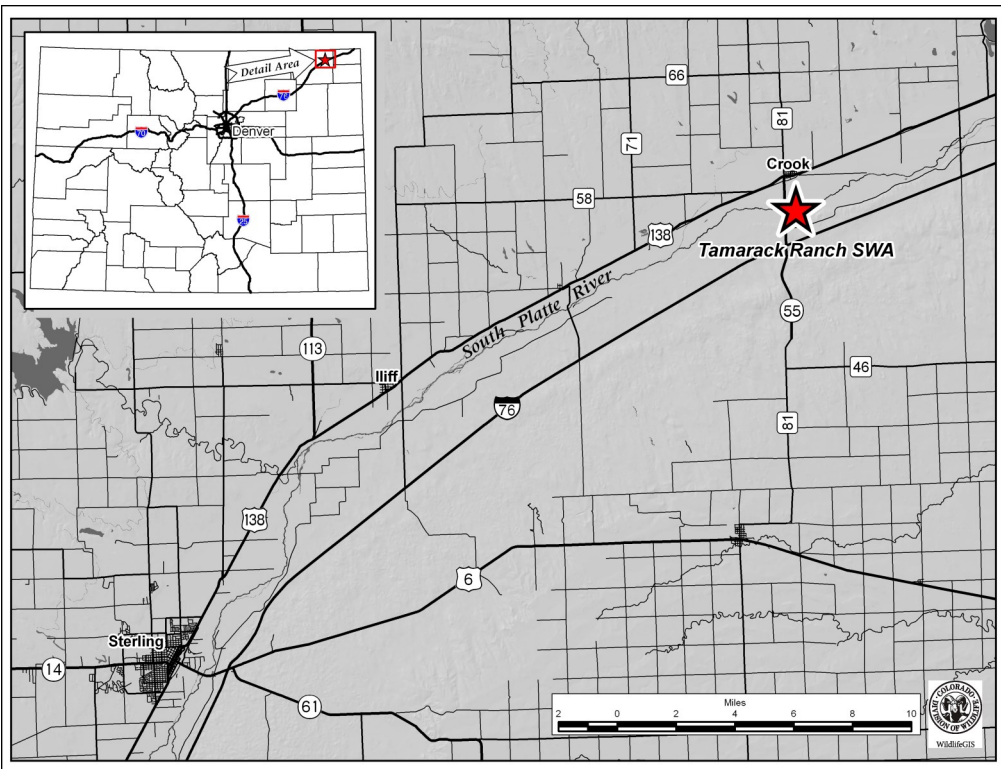
Tamarack Ranch State Wildlife Area Logan County

From Sterling, go 25 miles northeast on Interstate 76 to the Crook exit (Exit 149) and then 1/2 mile north (left) to the check station.

Wildlife Area Offers:

Hunting: Deer, Rabbit, Squirrel,
(GMU 91 & 93) Pheasant, Bobwhite
Quail, Dove, Water-
fowl, Turkey

Recreation: Hiking, Wildlife View-
ing, Limited Camping



#901.A: On all Division properties which have reservations available or required, those reservations may be made by phone or online (cpw.state.co.us). Reservations for small game and waterfowl hunting may not be made more than 14 days in advance of the hunt date, nor after 12:00 noon on the day before the hunt date. Reservations for big game hunting may not be made more than 45 days in advance of the start of the season for which the reservation is being made. Unless otherwise specified, reservations for big game hunting are valid throughout the season designated by the license. Hunters who wish to cancel a reservation must do so no later than 12:00 noon on the day before the hunt date. Failure to hunt a reserved area without prior cancellation, or follow check station procedures, may cause forfeiture of the privilege to make reservations for the remainder of the hunting season. Hunters are limited to a maximum of one reservation per hunt date. Hunters must possess a valid license for the species to be hunted in order to make a reservation. Reservations are not transferable. The individual named on the reservation must be at the property on the day of the hunt. Hunters with reservations may only hunt the hunt area specified on the reservation. Any exceptions to the above restrictions will be listed under property specific regulations.

Regulations:

In addition to or in place of those restrictions listed in regulation #900 the below provisions or restrictions apply (see Chapter 9, <https://cpw.state.co.us/aboutus/Pages/Regulations.aspx>).

- A. Public access is prohibited from 9:00 p.m. – 4:00 a.m.
- B. All recreational activities, except deer hunting, are prohibited on the opening weekend of the regular plains rifle deer season and on the opening day and first weekend of the late plains rifle deer season.
- C. All hunters must check-in and out at the check station, and must park at the hunting area they are checked into. After 9:00 a.m., hunters may hunt adjacent areas. Deer and turkey hunters are only required to check into East, West, or South Tamarack Area.
- D. From October 25 through the regular duck seasons, reservations are available, but not required, on weekends and state and federal holidays. Reservations must be made in accordance with #901.A of these regulations.

E. A maximum of three (3) field trials may be authorized during February, March, or August, and one (1) in September.

F. Vessel use is prohibited during waterfowl seasons.

G. Camping is allowed in designated areas only.

H. Augmentation Ponds:

1. From the first day of the second duck season through the dark goose season, waterfowl hunting is allowed only through a lottery drawing.
2. Hunting is limited to a specific pond/hunt area on each day.
3. To enter drawing, hunters must send a letter or postcard postmarked by September 30 to the CPW Brush Service Center, with name, address, phone number, CID number, and desired reservation dates. Hunters must possess a valid license to hunt waterfowl to enter drawing. Hunters may apply for multiple hunt dates on one postcard.
4. Hunters successful in the drawing are required to comply with all hunting restrictions in #901.A of these regulations. All hunters must check-in and out at the check station. Maximum of four (4) hunters allowed per group per day. Hunters must park in designated parking areas, but are allowed to drop off decoys via existing four-wheel-drive only roads, as posted. Hunters must remain on existing roads as posted.
5. During the light goose conservation order season, all hunters must check-in and out at check station.

More Information:

CPW Office (Brush): (970) 842-6300

Website: <https://cpw.state.co.us/>