

Travel Management Area Recreation Guide



Downloadable map at www.friends-of-fourmile.org



Expect and respect other users!



Thank you for using the Fourmile Travel Management Area responsibly!

The Friends of Fourmile, composed of volunteers from all user groups and affected landowners, invites you to join us in ensuring that this special place remains a quality recreation area for generations to come.

The Bureau of Land Management, US Forest Service, Friends of Fourmile and other authorized groups patrol the area regularly. They can answer questions on the responsible use of the area.

To report a violation or for information on other public lands recreational areas, contact

US Forest Service, Salida Ranger District
San Isabel National Forest
719 539-3591

Arkansas Headwaters Recreation Area, Salida
719 539-7289

Bureau of Land Management
Royal Gorge Field Office, Cañon City
719 269-8500

Fire and other emergency 911

To join, volunteer or to make a donation

Friends of Fourmile, a GARNA chapter
719 539-5106
Visit our website at www.friends-of-fourmile.org

Download the Fourmile Travel Management map www.friends-of-fourmile.org

Recycle this brochure in kiosk boxes, please.



tread lightly!



This brochure was produced by Friends of Fourmile with support from grants, BLM and USFS funds and citizen donations.

Expect and respect other users!

rev 5.1.16

FOURMILE

History along the trails

Geology is dramatic at the Castles, south of US285 at the head of Trout Creek Canyon. These remnants of the Wall Mountain Tuff are part of an immense pyroclastic lava flow from an explosive volcanic eruption SW of Buena Vista 36.7 million years ago. Nearby where the highway crosses Trout Creek, an exposure of the Great Unconformity attracts geologists from all over. Here 1.7 billion year old Precambrian granite meets much younger Paleozoic sedimentary rocks – a billion-year gap in the geologic record.

The **Utes** came to Fourmile for flint, wild game and piñon nuts, and followed Trout Creek up to good hunting grounds in Chubb Park and South Park, where buffalo roamed until the mid-1800's.

Two railroads ran through Chubb Park and Trout Creek Canyon. The Colorado Midland connected Colorado Springs to the West Slope from 1887 to 1918. This standard gauge line hauled freight to Leadville, moved coal from New Castle mines and limestone from Chubb Park's quarry, and transported passengers to Glenwood Hot Springs. Look for historical interpretive signs along the old railroad grade, today's Midland Bicycle Trail. The Denver, South Park & Pacific was active from 1880 to 1910 and its initial narrow gauge tracks closely followed Trout Creek below modern Highway 285/24.

The **Lenhardy Cutoff** was built in 1872 by George Lenhardy, an early Chaffee County Commissioner, from Chubb Park to the farmlands along the Arkansas River north of Buena Vista. This toll road and mail route bypassed Buena Vista to take a slightly shorter route to Leadville's mines. Stage coaches carried passengers and mail, and freight wagons hauled mining supplies, as well as hay and vegetables from Lenhardy's own ranch north of Buena Vista. Today, the Midland Bike Trail follows the Cutoff on FR 376.

Arnold Gulch provided access to Triad Ridge and Bald Mountain silver mines, active ore producers until the 1893 silver crash. Arkansas Valley ranchers drove their cattle up the gulch to Bassam and Chubb Parks every spring. Fourmile has provided summer grazing for over 100 years, these days on USFS and BLM permits.

Cabins at abandoned homesteads, mines, and lumber and rail tie cutting camps in Davis Meadow, Spanish Mill, Swedish Camp and Chubb and Bassam Parks remind us of past residents and lost dreams. Homesteaders, lumberjacks and miners often rode or walked long lonely trails to Buena Vista for supplies and entertainment.

The **Sailor Homestead** is a day use area at the end of FR 375C. In the mid 1800's it was a stage station and later served as headquarters of a 1500 acre cattle operation. Its extensive ditches irrigated hayfields along Fourmile Creek. The ranch became part of San Isabel National Forest in the 1970s.

Recreation opportunities

The **Fourmile Area** offers and manages diverse recreation for hikers, mountainbikers, four-wheel drive visitors, ATV and motorcycle riders – as well as hunters and fishermen. *Expecting and respecting other users* ensures that no one activity will overwhelm another and all may enjoy this beautiful landscape. Much of the area is open year round – see map for seasonal closure gates. Mud and snow can make roads temporarily impassable. Driving just after rain or snow may leave muddy ruts that persist for months and make conditions dangerous. It can be very hot in mid-summer and there are few running streams so always bring water.



Hiking and horseback riding are popular year round. Designated trails to Davis Meadow, Midland Hill and the Midland Bike Trail make a good introduction for first time visitors and groups. Cross country travel is also allowed. Topographic maps and GPS are recommended.



Mountain biking is permitted on all system routes unless marked otherwise, but is prohibited cross-country or in wilderness areas and wilderness study areas. The mostly single track Midland Bike Trail and Whipple Trail are favorites of intermediate riders. Look for the Midland Bike Trail symbols on the route and on the map. Separate Whipple and Midland Bike Trail brochures give more information. Advanced cyclists find challenges on sections of trails 6033, 6034 and 6034A in the Collegiate Peaks Overlook area and on dedicated ATV trails.



Single track on the Triad Ridge Trail 1425 in Arnold Gulch is dedicated to motorcycles (see map). Motorcycles are free to use ATV trails and all other motorized routes, but not permitted to travel cross-country. There are no hill-climbing areas in Fourmile; for OHV track information, please contact AHRA.



ATVs ride dedicated trails and many miles of designated motorized routes. Remember that hikers, horses and motorcycles share ATV routes and that passenger vehicles are frequently encountered on system roads. ATVs are not permitted to travel cross-country. **Side-by-side OHVs** (UTVs) over 50 inches wide are NOT permitted on designated ATV Trails, so please do not go around choke points.



4-wheel drive enthusiasts with short wheelbase vehicles and advanced ATV riders enjoy Chinaman Gulch Loop. Carnage Canyon requires extreme high-clearance wide-tire vehicles with winches; other vehicles are not recommended. Licensed 4-wheel drive vehicles use all designated system roads and county roads, but are not permitted to travel cross-country.

All unlicensed vehicles must comply with Chaffee County regulations which do not permit unlicensed vehicles on county roads except for several designated locations (see map and road signs).

Speed limits in Fourmile are set at 25mph by agency regulations (whether posted or not) and are enforced!



Camping

Camping is popular at primitive camp spur sites, as well as in several established campgrounds. These are indicated on the map.

Please observe these guidelines!

- **Camp only in an existing site** with a campfire ring.
 - **Limit parking** to bare and compacted areas.
 - **Keep motorized vehicles within one vehicle length** from a designated system road or trail.
 - **Make no new tracks** in campsites. Use one way in and out to reduce disturbance of soil and vegetation.
 - **No OHV riding or play** in campsites; OHVs are permitted in campsites for parking only.
 - **Use existing campfire rings**; do not build new campfire rings.
 - **Extinguish campfires thoroughly** with water and never leave fires unattended.
 - **Know and observe current fire restrictions.**
 - **Gather only down and dead wood** for firewood. Cutting of live and/or standing trees only with a current official permit.
 - **A portable toilet system** is highly recommended.
 - **Pack out all trash.**
- Also
- **Camping is limited to 14 days.**
 - **Camp away from streams** and other water sources. to allow for wildlife use and to avoid erosion and pollution.
 - **Bringing your own drinking water and firewood** is recommended.

Wildlife is abundant, including elk, mule deer, bighorn sheep, coyotes, an occasional mountain lion, raptors and songbirds. Keep your distance and avoid disturbing wildlife. Please do not feed them. Wildlife depends on scarce water resources and a healthy watershed; please do not damage vegetation, which causes soil erosion.

Historic and prehistoric artifacts and structures on public lands belong to all Americans and are protected by the Antiquities Act and the Archeological Resource Protection Act. Fines and penalties may be assessed for the removal or disturbance of artifacts or structures.

Download the Fourmile map
www.friends-of-fourmile.org
or just take a digital photo of this brochure map or signboard map.

Please recycle this brochure.



Be a responsible user!

- **Pack out all trash**, and dispose of it properly.
- **Respect other users** and be a good neighbor.
- **Respect private property** – ask permission first!
- **Completely extinguish all cigarettes** and properly dispose of them.
- **Play responsibly**; there are NO unrestricted hill climb or circle play areas; please use commercial sites for these activities.
- **Ride safely**, be prepared and know your limits.
- **Respect signs and barriers** posted to allow revegetation of damaged areas.
- **Report illegal activities** to BLM, USFS, local law enforcement, and/or Chaffee County Crime Stoppers 719 539-7289

When using your ATV, motorcycle or other motorized vehicle:

- **Ride at appropriate speeds** for your safety and others. **Maximum speed is 25mph** on all Fourmile motorized routes.
- **Limit your use to designated roads and trails** identified for Off-Highway Vehicle travel. See San Isabel National Forest Motor Vehicle Use Map. www.fs.usda.gov/Internet/FSE_DOCUMENTS/stelprdb5200515.pdf
- **Do not create new roads and trails.**
- **Prevent soil erosion**, protect vegetation and soils from damage.
- **Park only at existing parking areas** and pull-offs, on compacted soil.

Register your vehicle

Colorado's Off-Highway Vehicle Program

information and brochures help ensure your safety and enjoyment as a responsible rider.

Registering a new vehicle, **renewing** a registration and **purchasing use permits** for out-of-state vehicles help fund trail maintenance and construction, trailheads, parking areas, trail signs, maps, and land acquisition.

All off-highway recreation vehicles operated on designated OHV routes or trails in Colorado must display a current **registration sticker** from the Colorado Parks & Wildlife Off-Highway Vehicle Program.

All off-highway vehicles and motor vehicles with a valid license plate must also display a current **OHV use permit sticker** when traveling on designated OHV trails in Colorado. Off-highway vehicles (OHVs) include motorcycles, dirt bikes, three-wheelers, ATVs, and dune buggies that are operated on public land or trails in Colorado.

For more information, call 303 791-1920 or 719 539-7289 Or visit www.parks.state.co.us.

• **Mountain bikes** may use hiking trails and other system routes, but are prohibited from riding cross-country or in wilderness areas and wilderness study areas.

Route designations

Motorized travel is limited to designated roads and trails that are identified with a route number and symbols showing what travel the route is open to. Note that some routes open to vehicles may require high clearance, 4WD and/or advanced operator skills.

Please travel only on routes that are designated for that use.

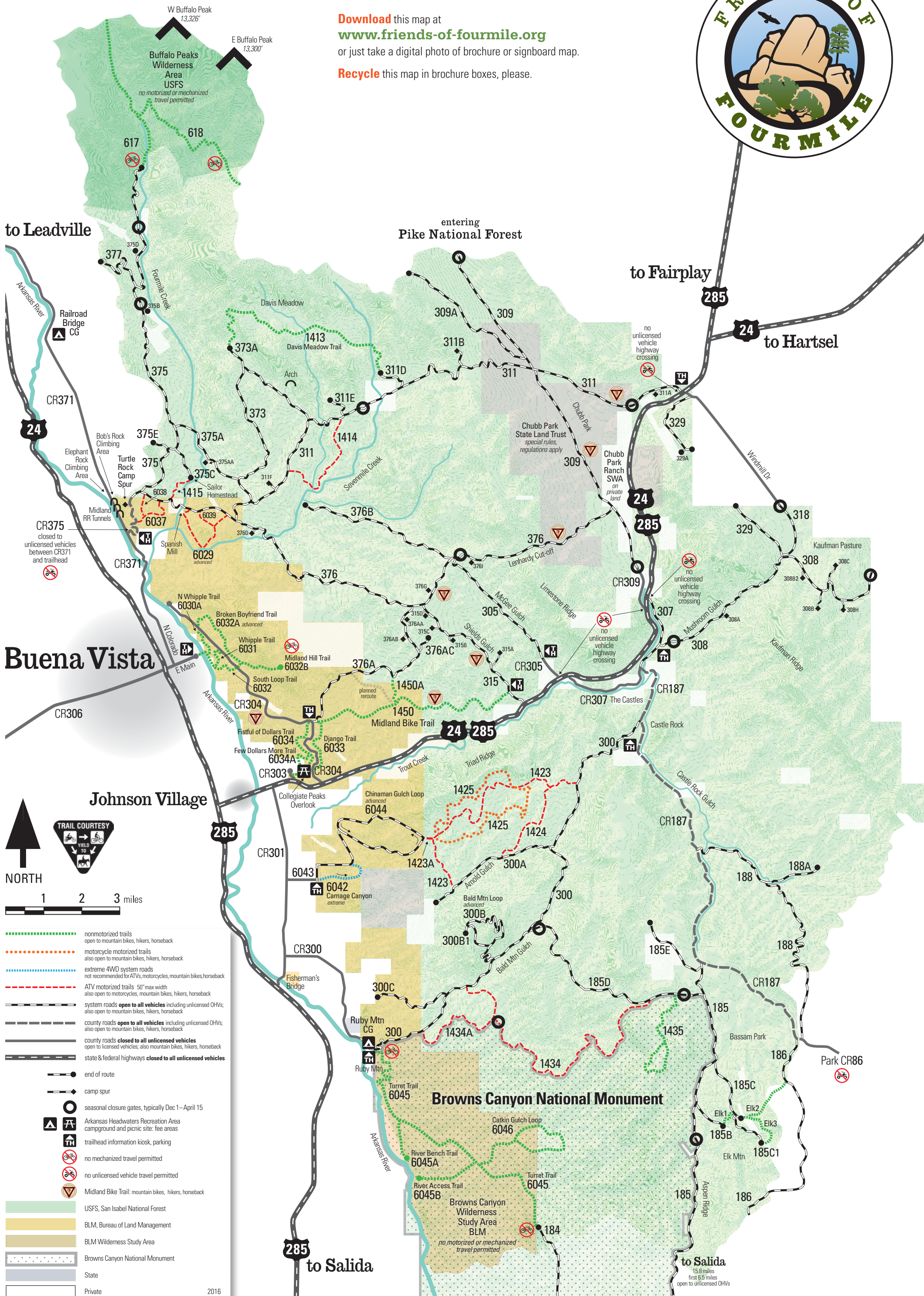
- **ATV trails** – vehicles 50" or less in width
- **Singletrack** – motorcycles only, no ATVs. (Hikers and cyclists may use singletrack and ATV trails.)

Look for these signs showing the types of uses permitted and not permitted on each route.



TREAD LIGHTLY!

- T**ravel and recreate with minimum impact.
- R**espect the environment and the rights of others.
- E**ducate yourself, plan and prepare before you go.
- A**void streams, meadows, ponds, muddy roads and trails, steep hillsides, wildlife and livestock.
- D**iscover the rewards of responsible recreation.



Download this map at www.friends-of-fourmile.org or just take a digital photo of brochure or signboard map. Recycle this map in brochure boxes, please.

TRAIL COURTESY

1 2 3 miles

- nonmotorized trails open to mountain bikes, hikers, horseback
- motorcycle motorized trails also open to mountain bikes, hikers, horseback
- extreme 4WD system roads not recommended for ATVs, motorcycles, mountain bikes, horseback
- ATV motorized trails 50" max width also open to motorcycles, mountain bikes, hikers, horseback
- system roads open to all vehicles including unlicensed OHVs; also open to mountain bikes, hikers, horseback
- county roads open to all vehicles including unlicensed OHVs; also open to mountain bikes, hikers, horseback
- county roads closed to all unlicensed vehicles open to licensed vehicles; also mountain bikes, hikers, horseback
- state & federal highways closed to all unlicensed vehicles
- end of route
- camp spur
- seasonal closure gates, typically Dec 1–April 15
- Arkansas Headwaters Recreation Area campground and picnic site: fee areas
- trailhead information kiosk, parking
- no mechanized travel permitted
- no unlicensed vehicle travel permitted
- Midland Bike Trail: mountain bikes, hikers, horseback
- USFS, San Isabel National Forest
- BLM, Bureau of Land Management
- BLM Wilderness Study Area
- Browns Canyon National Monument
- State
- Private