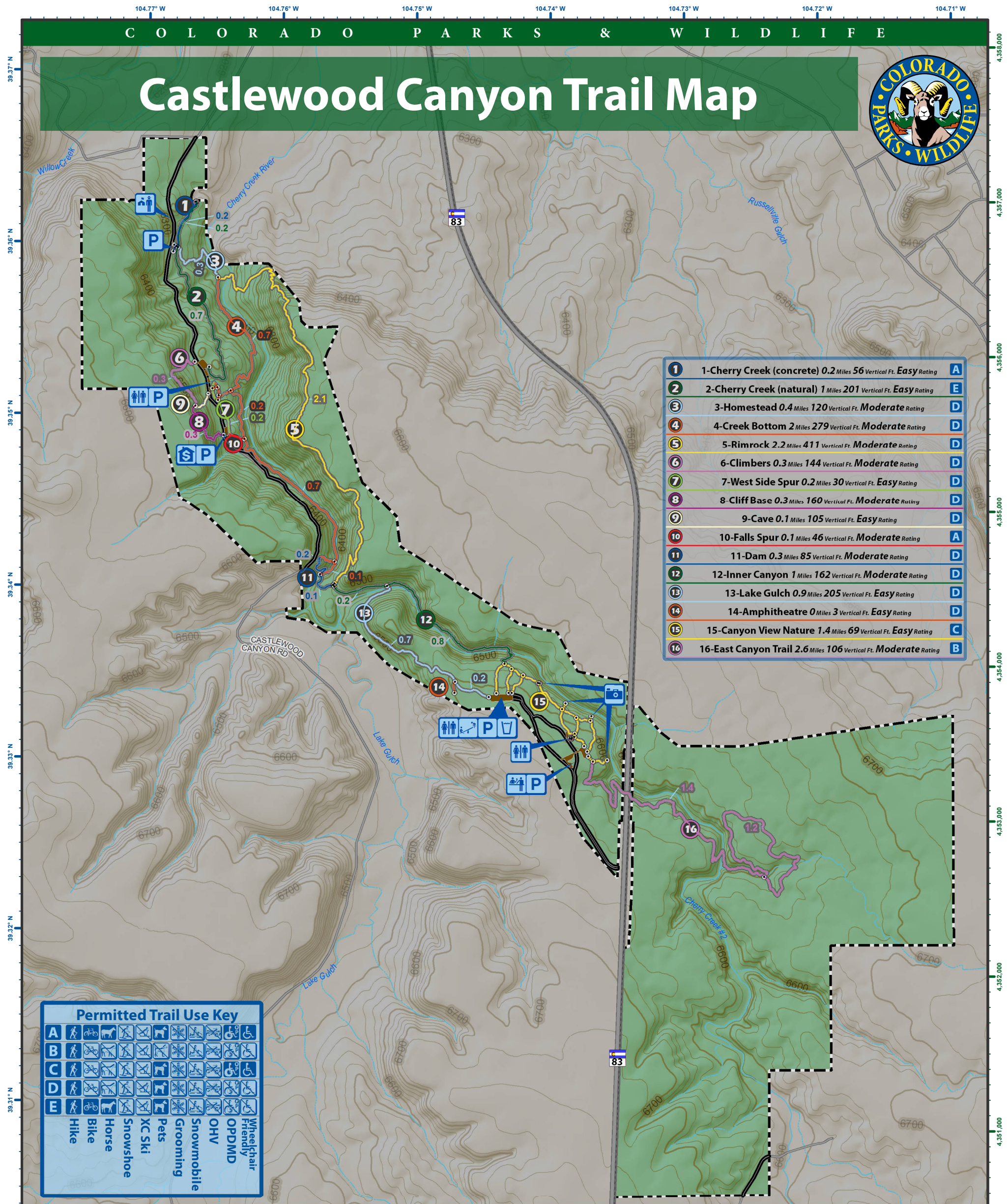


Castlewood Canyon Trail Map



1	1-Cherry Creek (concrete) 0.2 Miles 56 Vertical Ft. Easy Rating	A
2	2-Cherry Creek (natural) 1 Miles 201 Vertical Ft. Easy Rating	E
3	3-Homestead 0.4 Miles 120 Vertical Ft. Moderate Rating	D
4	4-Creek Bottom 2 Miles 279 Vertical Ft. Moderate Rating	D
5	5-Rimrock 2.2 Miles 411 Vertical Ft. Moderate Rating	D
6	6-Climbers 0.3 Miles 144 Vertical Ft. Moderate Rating	D
7	7-West Side Spur 0.2 Miles 30 Vertical Ft. Easy Rating	D
8	8-Cliff Base 0.3 Miles 160 Vertical Ft. Moderate Rating	D
9	9-Cave 0.1 Miles 105 Vertical Ft. Easy Rating	D
10	10-Falls Spur 0.1 Miles 46 Vertical Ft. Moderate Rating	A
11	11-Dam 0.3 Miles 85 Vertical Ft. Moderate Rating	D
12	12-Inner Canyon 1 Miles 162 Vertical Ft. Moderate Rating	D
13	13-Lake Gulch 0.9 Miles 205 Vertical Ft. Easy Rating	D
14	14-Amphitheatre 0 Miles 3 Vertical Ft. Easy Rating	D
15	15-Canyon View Nature 1.4 Miles 69 Vertical Ft. Easy Rating	C
16	16-East Canyon Trail 2.6 Miles 106 Vertical Ft. Moderate Rating	B

Permitted Trail Use Key	
A	Hike, Bike, Horse, Snowshoe, XC Ski, Pets, Grooming, Snowmobile, OHV, OPD/M, Wheelchair Friendly
B	Hike, Bike, Horse, Snowshoe, XC Ski, Pets, Grooming, Snowmobile, OHV, OPD/M, Wheelchair Friendly
C	Hike, Bike, Horse, Snowshoe, XC Ski, Pets, Grooming, Snowmobile, OHV, OPD/M, Wheelchair Friendly
D	Hike, Bike, Horse, Snowshoe, XC Ski, Pets, Grooming, Snowmobile, OHV, OPD/M, Wheelchair Friendly
E	Hike, Bike, Horse, Snowshoe, XC Ski, Pets, Grooming, Snowmobile, OHV, OPD/M, Wheelchair Friendly

CPW PocketTrail Map # 17 of 60

Castlewood Canyon Trail Use Map: CAS_1 of 1 showing trails within the Entire Park

Last Updated: 9/9/2013 12:03:03 PM
 Created by the Colorado State Trails Program
 Email revisions to: Eric.Drummond@state.co.us

Blue GPS Grid = decimal degrees (WGS84)
 Green GPS Grid = meters UTM Zone 13 North (NAD 1983)

Infrastructure Legend

	Visitor Center (1)		Trail Intersections
	Entrance station (1)		CPW Public Roads
	Fee Station (2)		CDOT Highways
	Restroom (3)		CDOT Major Roads
	Campground (0)		CDOT Local Roads
	Drinking Water (1)		CPW Service Roads
	Historic Site (0)		Rivers Diversions
	Playground (1)		CPW Parking Lots
	Parking (11)		CPW Boundaries
	Scenic Overlook (5)		
	Wildlife Watching (0)		

Cartographic Information

0 0.25 0.5 0.75 1
 Miles

Scale: 1:24,000
 Declination as of January 2013:
 8.5651° changing by -0.1325° per year
 Coordinate System: NAD 1983 UTM Zone 13N

Department of Natural Resources Disclaimer:
 The Colorado Department of Natural Resources ("DNR") is not responsible and shall not be liable to the user for damages of any kind arising out of the use of data or information provided by DNR, including the installation of the data or information, its use, or the results from its use. ANY DATA OR INFORMATION PROVIDED BY THE DNR IS PROVIDED "AS IS" WITHOUT WARRANTY OF ANY KIND, EITHER EXPRESS OR IMPLIED, INCLUDING, BUT NOT LIMITED TO, THE IMPLIED WARRANTIES OF MERCHANTABILITY AND FITNESS FOR A PARTICULAR PURPOSE. Data or information provided by DNR shall be used and relied upon only at the user's sole risk, and the user agrees to indemnify and hold harmless the DNR, its officials, officers and employees from any liability arising out of the use of the data/information provided.

Download Map as .pdf
http://bit.ly/CAS_1of1