

**APPENDIX K**  
**PHOTO MONITORING**

---



## PHOTO MONITORING

---

This Appendix section includes 41 photo monitoring points that may be useful to Cheyenne Mountain State Park in monitoring recreation facilities, infrastructure, and trail use over time. By documenting the overall conditions in specific areas of the park at a given point in time, Cheyenne Mountain staff will have a baseline from which to compare future conditions, and potentially adapt management, if needed.

Ten photos were obtained from the Capital Development Program's asset inventory and are named with the letter 'R' followed by a series of numbers. For example: **R0012628.JPG**. These photos were not taken facing the four cardinal points.

The other twenty nine photos are named in the following manner and were taken facing the four cardinal points:

Park Abbreviation\_GPS Point\_Photo Number\_Direction Facing

For example:

- Cheyenne Mountain GPS point 1, photo 1, facing North is named: **CHM\_1\_1\_0**
- Cheyenne Mountain GPS point 1, photo 2, facing East is named: **CHM\_1\_2\_90**
- Cheyenne Mountain GPS point 2, photo 9, facing 45° is named: **CHM\_2\_9\_45**

**Note: All directional bearings are based off Magnetic North. The magnetic declination at Cheyenne Mountain State Park is 8° 44' E and changes by 0° 7' W per year<sup>1</sup>.**

---

<sup>1</sup> National Geophysical Data Center. Geomagnetism home page. Accessed September 2, 2011.  
<<http://www.ngdc.noaa.gov/geomagmodels/struts/calcDeclination>>

<b>Point</b>	<b>Photo-Monitoring Location</b>	<b>Page</b>
1	Visitor Center	3
2	Entrance Station	4
3	Meadows Campground, site of undeveloped cabins	5
4	Soaring Kestrel Trailhead	6
5	Soaring Kestrel Trail	7
6	Meadows Campground, site #52	8
7	Meadows Group Campground Commons Area, sites #58 and #59	9
8	Lower Meadows Restroom	10
9	Maintenance Shop and Shed	11
10	Acorn Alley Trail, near campsite #12	12
11	Swift Puma Campground, ADA accessible site #19	13
12	Swift Puma Campground, site #43	14
13	Swift Puma Campground Restroom	15
14	Gobbler Grove Campground, site #16	16
15	Gobbler Grove Campground, site #17	17
16	Raptor Glen Campground, site #2	18
17	Raptor Glen Campground, site #3	19
18	Camper Services Building	20
19	Site of planned yet undeveloped event center	21
20	Amphitheater	22
21	Group Picnic Area	23
22	Blackmer Loop Trail and Boulder Run Trail junction	24
23	Cougar's Shadow Lookout Point	25
24	Day Use Trailhead	26
25	Bridge at Zook Loop Trail and Sundance Trail junction	27
26	Day Use Trailhead Restroom	28
27	Sundance Trail near prairie dog colony	29
28	Talon Trail and North Talon Trail Junction	30
29	Lookout on the North Talon trail	31
30	Old Forest Service campsite; on Dixon Trail to top of the mountain	32
31	Talon, North Talon and South Talon trails junction	33
32	Overlook on Talon Trail	34
33	Talon Trail and Sundance Trail junction	35
34	Proposed archery range site	36
35	Proposed archery range site	37
36	Near proposed archery range trail	38
37	Along proposed archery range trail	39
38	Top of Cheyenne Mountain	40
39	Top of Cheyenne Mountain	41
40	Top of Cheyenne Mountain	42
41	Top of Cheyenne Mountain	43

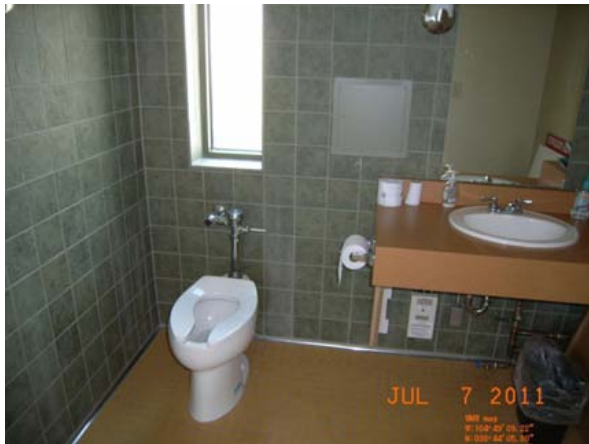
**Photo Monitoring Point: 1**

**Date:** July 7, 2011  
**Weather:** Sunny in the morning, thunderstorms in the afternoon, 84°  
**Location:** Visitor Center  
**Photos:** 4 Photos: R0012628.JPG; R0012627.JPG; R0012529.JPG; R0012531.JPG  
**Comments:** Visitor Center exterior and interior in excellent condition  
**Evaluator:** Leigh Johnson



**Photo Monitoring Point: 2**

**Date:** July 7, 2011  
**Weather:** Sunny in the morning, thunderstorms in the afternoon, 84°  
**Location:** Entrance Station  
**Photos:** 3 Photos: R0012541.JPG; R0012540.JPG; R0012539.JPG  
**Comments:** Station exterior and interior in excellent condition  
**Evaluator:** Leigh Johnson



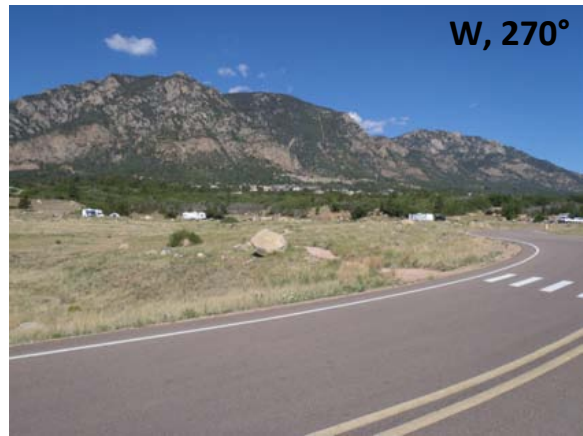
**Photo Monitoring Point: 3**

**Date:** August 1, 2011  
**Weather:** Sunny and Clear, ~80°  
**Location:** Meadows Campground, site of undeveloped cabins  
**Photos:** 4 Photos: CHM\_2\_5\_0; CHM\_2\_6\_90; CHM\_2\_7\_180; CHM\_2\_8\_270  
**Comments:** Site is undeveloped, utilities present; development may occur here in the future  
**Evaluator:** Megan Deffner



**Photo Monitoring Point: 4**

**Date:** August 1, 2011  
**Weather:** Sunny and Clear, ~80°  
**Location:** Soaring Kestrel Trailhead  
**Photos:** 4 Photos: CHM\_3\_9\_0; CHM\_3\_10\_90; CHM\_3\_11\_180; CHM\_3\_12\_270  
**Comments:** Asphalt is cracking on roadside near trailhead; erosion observed on roadside near trailhead  
**Evaluator:** Megan Deffner





**Photo Monitoring Point: 5**

**Date:** August 1, 2011  
**Weather:** Sunny and Clear, ~80°  
**Location:** Soaring Kestrel Trail  
**Photos:** 4 Photos: CHM\_4\_13\_0; CHM\_4\_15\_90; CHM\_4\_17\_180; CHM\_4\_19\_270  
**Comments:** Trail in excellent condition; pristine shrubland, no weeds near trail  
**Evaluator:** Megan Deffner and Melissa Greulich



**Photo Monitoring Point: 6**

**Date:** August 1, 2011  
**Weather:** Sunny and Clear, ~80°  
**Location:** Meadows Campground, site #52  
**Photos:** 4 Photos: CHM\_6\_25\_0; CHM\_6\_26\_90; CHM\_6\_27\_180; CHM\_6\_28\_270  
**Comments:** Campground in good condition  
**Evaluator:** Megan Deffner



**Photo Monitoring Point: 7**

**Date:** August 1, 2011  
**Weather:** Sunny and Clear, ~80°  
**Location:** Meadows Group Campground Commons Area, sites #58 and 59  
**Photos:** 4 Photos: CHM\_5\_21\_0; CHM\_5\_22\_90; CHM\_5\_23\_180; CHM\_5\_24\_270  
**Comments:** Commons area in good condition, electrical panel cover broken at campsites #58 & 59  
**Evaluator:** Megan Deffner



**Photo Monitoring Point: 8**

**Date:** July 7, 2011  
**Weather:** Sunny in the morning, thunderstorms in the afternoon, 84°  
**Location:** Lower Meadows Restroom  
**Photos:** 3 Photos: R0012589.JPG; R0012590.JPG; R0012591.JPG  
**Comments:** Building exterior and interior in excellent condition  
**Evaluator:** Leigh Johnson



**Photo Monitoring Point: 9**

**Date:** July 7, 2011  
**Weather:** Sunny in the morning, thunderstorms in the afternoon, 84°  
**Location:** Maintenance Shop and Shed  
**Photos:** 4 Photos: R0012601.JPG; R0012603.JPG; R0012604.JPG; R0012599.JPG  
**Comments:** Building exterior and interior in excellent condition  
**Evaluator:** Leigh Johnson



**Photo Monitoring Point: 10**

**Date:** August 1, 2011  
**Weather:** Sunny and Clear, ~80°  
**Location:** Acorn Alley Trail, near campsite #12  
**Photos:** 4 Photos: CHM\_10\_49\_0; CHM\_10\_51\_90; CHM\_10\_53\_180; CHM\_10\_55\_270  
**Comments:** Drainage bisecting trail may be creating erosion  
**Evaluator:** Megan Deffner



**Photo Monitoring Point: 11**

**Date:** August 1, 2011  
**Weather:** Sunny and Clear, ~80°  
**Location:** Swift Puma Campground, ADA accessible site #19  
**Photos:** 4 Photos: CHM\_7\_29\_0; CHM\_\_30\_90; CHM\_7\_31\_180; CHM\_7\_32\_270  
**Comments:** Hairline cracks in asphalt near campsite marker; social trail leading to camper services building is developing behind campsite; otherwise in good condition  
**Evaluator:** Megan Deffner

**N, 0°**



**E, 90°**



**S, 180°**



**W, 270°**



**Photo Monitoring Point: 12**

**Date:** July 8, 2011  
**Weather:** Sunny and clear, 84°  
**Location:** Swift Puma Campground, site #43  
**Photos:** 4 Photos: R0012739.JPG; R0012742.JPG; R0012740.JPG; R0012741.JPG  
**Comments:** Campsite in excellent condition  
**Evaluator:** Leigh Johnson





**Photo Monitoring Point: 13**

**Date:** July 7, 2011  
**Weather:** Sunny in the morning, thunderstorms in the afternoon, 84°  
**Location:** Swift Puma Campground Restroom  
**Photos:** 4 Photos: R0012587.JPG; R0012650.JPG; R0012579.JPG; R0012582.JPG  
**Comments:** Asphalt patched in several areas; concrete separating from building in several places; plumbing in men's restroom is crooked  
**Evaluator:** Leigh Johnson



**Photo Monitoring Point: 14**

**Date:** July 8, 2011  
**Weather:** Sunny and clear, 84°  
**Location:** Gobbler Grove Campground, site #16  
**Photos:** 4 Photos: R0012684.JPG; R0012685.JPG; R0012686.JPG; R0012687.JPG  
**Comments:** Site is in good condition; cracks in concrete in parking area  
**Evaluator:** Leigh Johnson



**Photo Monitoring Point: 15**

**Date:** August 1, 2011  
**Weather:** Sunny and Clear, ~80°  
**Location:** Gobbler Grove Campground, site #17  
**Photos:** 4 Photos: CHM\_1\_1\_0; CHM\_1\_2\_90; CHM\_1\_3\_180; CHM\_1\_4\_270  
**Comments:** Site is in good shape, hairline cracks in concrete in parking area  
**Evaluator:** Megan Deffner



**Photo Monitoring Point: 16**

**Date:** July 8, 2011  
**Weather:** Sunny and Clear, 84°  
**Location:** Raptor Glen Campground, site #2  
**Photos:** 3 Photos: R0012658.JPG; R0012659.JPG; R0012660.JPG  
**Comments:** Campsite in good condition; hairline concrete pad raised roughly 1 inch above the asphalt in parking area  
**Evaluator:** Leigh Johnson



**Photo Monitoring Point: 17**

**Date:** July 8, 2011  
**Weather:** Sunny and Clear, 84°  
**Location:** Raptor Glen Campground, site #3  
**Photos:** 4 Photos: R0012661.JPG; R0012662.JPG; R0012664.JPG; R0012663.JPG  
**Comments:** Campsite in excellent condition; hairline cracks in parking area pavement  
**Evaluator:** Leigh Johnson



**Photo Monitoring Point: 18**

**Date:** July 7, 2011  
**Weather:** Sunny in the morning, thunderstorms in the afternoon, 84°  
**Location:** Camper Services Building  
**Photos:** 4 Photos: R0012646.JPG; R0012577.JPG; R0012571.JPG; R0012565.JPG  
**Comments:** Building interior and exterior in excellent condition  
**Evaluator:** Leigh Johnson



**Photo Monitoring Point: 19**

**Date:** August 1, 2011  
**Weather:** Sunny and Clear, ~80°  
**Location:** Site of planned yet undeveloped event center  
**Photos:** 4 Photos: CHM\_11\_57\_0; CHM\_11\_58\_90; CHM\_11\_59\_180; CHM\_11\_60\_270  
**Comments:** Undeveloped site, utilities present; unpaved road in good condition; development may occur here in the future  
**Evaluator:** Megan Deffner



**Photo Monitoring Point: 20**

**Date:** August 1, 2011

**Weather:** Sunny and Clear, ~80°

**Location:** Amphitheater

**Photos:** 4 Photos: CHM\_12\_61\_0; CHM\_12\_62\_90; CHM\_12\_63\_180; CHM\_12\_64\_270

**Comments:** Amphitheater in very good condition, except for presence of Russian thistle

**Evaluator:** Megan Deffner





**Photo Monitoring Point: 21**

**Date:** August 1, 2011  
**Weather:** Sunny and Clear, ~80°  
**Location:** Group Picnic Area  
**Photos:** 4 Photos: CHM\_14\_73\_0; CHM\_14\_74\_90; CHM\_14\_75\_180; CHM\_14\_76\_270  
**Comments:** Picnic site in very good condition  
**Evaluator:** Megan Deffner



**Photo Monitoring Point: 22**

**Date:** August 1, 2011

**Weather:** Sunny and Clear, ~80°

**Location:** Blackmer Loop Trail and Boulder Run Trail junction

**Photos:** 4 Photos: CHM\_15\_77\_0; CHM\_15\_79\_90; CHM\_15\_81\_180; CHM\_15\_83\_270

**Comments:** Trail and Interpretive sign both in good condition

**Evaluator:** Megan Deffner



**Photo Monitoring Point: 23**

**Date:** August 1, 2011  
**Weather:** Sunny and Clear, ~80°  
**Location:** Cougar's Shadow Lookout Point  
**Photos:** 4 Photos: CHM\_20\_117\_0; CHM\_20\_118\_90; CHM\_20\_119\_180; CHM\_20\_120\_270  
**Comments:** Erosion occurring on trail near interpretive sign and bench; social trail is developing, bisecting main trail leading up to lookout  
**Evaluator:** Megan Deffner



**Photo Monitoring Point: 24**

**Date:** August 1, 2011  
**Weather:** Sunny and Clear, ~80°  
**Location:** Day Use Trailhead  
**Photos:** 4 Photos: CHM\_22\_129\_0; CHM\_22\_130\_90; CHM\_22\_131\_180; CHM\_22\_132\_270  
**Comments:** Facilities and trail in very good condition  
**Evaluator:** Megan Deffner



**Photo Monitoring Point: 25**

**Date:** August 1, 2011  
**Weather:** Sunny and Clear, ~80°  
**Location:** Bridge at Zook Loop Trail and Sundance Trail junction  
**Photos:** 4 Photos: CHM\_23\_133\_0; CHM\_23\_134\_90; CHM\_23\_135\_180; CHM\_23\_136\_270  
**Comments:** Bridge and trail sign in good condition  
**Evaluator:** Megan Deffner



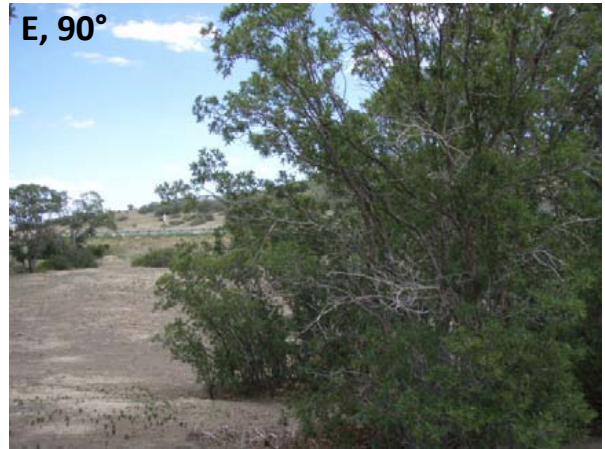
**Photo Monitoring Point: 26**

**Date:** August 1, 2011  
**Weather:** Sunny and Clear, ~80°  
**Location:** Day Use Trailhead Restroom  
**Photos:** 4 Photos: CHM\_24\_137\_0; CHM\_24\_138\_90; CHM\_24\_139\_180; CHM\_24\_140\_270  
**Comments:** Social trail developing and erosion occurring to the side of wooden staircase  
**Evaluator:** Megan Deffner



**Photo Monitoring Point: 27**

**Date:** August 1, 2011  
**Weather:** Sunny and Clear, ~80°  
**Location:** Sundance Trail near prairie dog colony  
**Photos:** 4 Photos: CHM\_27\_157\_0; CHM\_27\_159\_90; CHM\_27\_161\_180; CHM\_27\_163\_270  
**Comments:** Interpretive sign in good condition; evidence of trail widening  
**Evaluator:** Megan Deffner



**Photo Monitoring Point: 28**

**Date:** August 18, 2011  
**Weather:** Sunny and Clear, ~80°-85°  
**Location:** Talon Trail and North Talon Trail junction  
**Photos:** 4 Photos: CHM\_40\_257\_0; CHM\_40\_259\_90; CHM\_40\_261\_180; CHM\_40\_263\_270  
**Comments:** Trail in good condition, some erosion occurring; “you are here” marker on trail sign is incorrect  
**Evaluator:** Megan Deffner





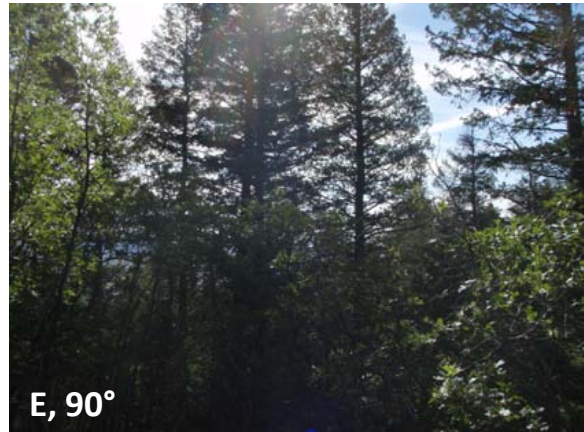
**Photo Monitoring Point: 29**

**Date:** August 18, 2011  
**Weather:** Sunny and Clear, ~80°-85°  
**Location:** Lookout on the North Talon Trail  
**Photos:** 3 Photos: CHM\_42\_273\_45; CHM\_42\_274\_150; CHM\_42\_275\_300  
**Comments:** Bench and interpretive sign in good condition; trail leading to lookout in good condition  
**Evaluator:** Megan Deffner



**Photo Monitoring Point: 30**

**Date:** August 18, 2011  
**Weather:** Sunny and Clear, ~80°-85°  
**Location:** Old Forest Service campsite; on Dixon Trail to top of the mountain  
**Photos:** 4 Photos: CHM\_44\_284\_0; CHM\_44\_286\_90; CHM\_44\_288\_180; CHM\_44\_290\_270  
**Comments:** Trash and debris litter the old campsite  
**Evaluator:** Megan Deffner



**Photo Monitoring Point: 31**

**Date:** August 18, 2011  
**Weather:** Sunny and Clear, ~80°-85°  
**Location:** Talon, North Talon and South Talon trails junction  
**Photos:** 4 Photos: CHM\_46\_300\_0; CHM\_46\_302\_90; CHM\_46\_304\_180; CHM\_46\_306\_270  
**Comments:** Trail sign is gone, missing for two months; trail in good condition  
**Evaluator:** Megan Deffner



**Photo Monitoring Point: 32**

**Date:** August 18, 2011  
**Weather:** Sunny and Clear, ~80°-85°  
**Location:** Overlook on Talon Trail  
**Photos:** 4 Photos: CHM\_50\_328\_45; CHM\_50\_329\_135; CHM\_50\_330\_225; CHM\_50\_331\_315  
**Comments:** Trail, interpretive sign and bench in good condition  
**Evaluator:** Megan Deffner



**Photo Monitoring Point: 33**

**Date:** August 18, 2011

**Weather:** Sunny and Clear, ~80°-85°

**Location:** Talon Trail and Sundance Trail junction

**Photos:** 4 Photos: CHM\_52\_340\_0; CHM\_52\_341\_90; CHM\_52\_342\_180; CHM\_52\_343\_270

**Comments:** Runoff creating slight erosion on trail, otherwise trail and trail sign in good condition

**Evaluator:** Megan Deffner



**Photo Monitoring Point: 34**

**Date:** August 18, 2011

**Weather:** Sunny and Clear, ~80°-85°

**Location:** Proposed archery range site

**Photos:** 4 Photos: CHM\_53\_344\_0; CHM\_53\_346\_90; CHM\_53\_348\_180; CHM\_53\_350\_270

**Comments:** Undeveloped site, vegetation in good condition; development may occur here in the future

**Evaluator:** Megan Deffner



**Photo Monitoring Point: 35**

**Date:** August 18, 2011  
**Weather:** Sunny and Clear, ~80°-85°  
**Location:** Proposed archery range site  
**Photos:** 4 Photos: CHM\_54\_352\_0; CHM\_54\_354\_90; CHM\_54\_356\_180; CHM\_54\_358\_270  
**Comments:** Currently undeveloped; some social trails observed; development may occur here in the future  
**Evaluator:** Megan Deffner



**Photo Monitoring Point: 36**

**Date:** August 1, 2011  
**Weather:** Sunny and Clear, ~80°  
**Location:** Near proposed archery range trail  
**Photos:** 4 Photos: CHM\_31\_185\_0; CHM\_31\_187\_90; CHM\_31\_189\_180; CHM\_31\_191\_270  
**Comments:** Currently undeveloped; development may occur here in the future  
**Evaluator:** Megan Deffner





**Photo Monitoring Point: 37**

**Date:** August 1, 2011  
**Weather:** Sunny and Clear, ~80°  
**Location:** Along proposed archery range trail  
**Photos:** 4 Photos: CHM\_32\_193\_0; CHM\_32\_195\_90; CHM\_32\_197\_180; CHM\_32\_199\_270  
**Comments:** Currently undeveloped; development may occur here in the future  
**Evaluator:** Megan Deffner



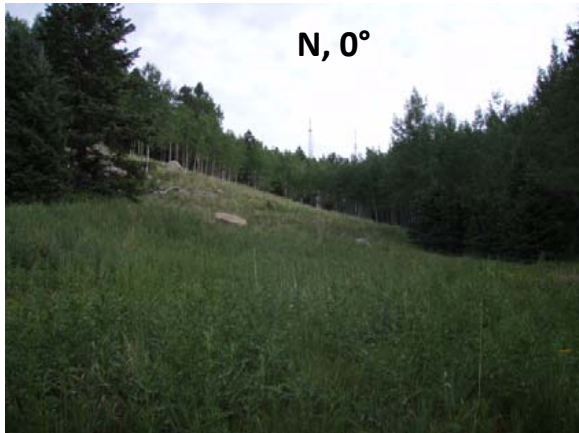
**Photo Monitoring Point: 38**

**Date:** August 2, 2011  
**Weather:** Partly cloudy, ~75°-80°  
**Location:** Top of Cheyenne Mountain  
**Photos:** 4 Photos: CHM\_34\_209\_0; CHM\_34\_211\_90; CHM\_34\_213\_180; CHM\_34\_215\_270  
**Comments:** Pristine sub-alpine habitat, currently closed to public access; trail to be developed in the future  
**Evaluator:** Megan Deffner



**Photo Monitoring Point: 39**

**Date:** August 2, 2011  
**Weather:** Partly Cloudy, ~75°-80°  
**Location:** Top of Cheyenne Mountain  
**Photos:** 4 Photos: CHM\_35\_217\_0; CHM\_35\_219\_90; CHM\_35\_221\_180; CHM\_35\_223\_270  
**Comments:** Pristine sub-alpine habitat, currently closed to public access; trail to be developed in the future  
**Evaluator:** Megan Deffner



**Photo Monitoring Point: 40**

**Date:** August 2, 2011

**Weather:** Partly Cloudy, ~75°-80°

**Location:** Top of Cheyenne Mountain

**Photos:** 4 Photos: CHM\_36\_225\_0; CHM\_36\_227\_90; CHM\_36\_229\_180;  
CHM\_36\_231\_270

**Comments:** Large meadow, pristine sub-alpine habitat, currently closed to public access;  
trail to be developed in the future

**Evaluator:** Megan Deffner



**Photo Monitoring Point: 41**

**Date:** August 2, 2011  
**Weather:** Partly Cloudy, ~75°-80°  
**Location:** Top of Cheyenne Mountain  
**Photos:** 4 Photos: CHM\_37\_233\_0; CHM\_37\_235\_90; CHM\_37\_237\_180; CHM\_37\_239\_270  
**Comments:** Large meadow, pristine sub-alpine habitat, currently closed to public access; trail to be developed in the future  
**Evaluator:** Megan Deffner



# Photo Monitoring Points Map

