

410 JL Ranch Heights • Colorado Springs, CO 80926
(719) 576-2016 • cheyenne.park@state.co.us

cpw.state.co.us



CPW_SECM_20K_2/22

COLORADO PARKS & WILDLIFE

Cheyenne Mountain State Park

ENJOY YOUR STATE PARKS



cpw.state.co.us

Cheyenne Mountain State Park is the result of strong partnerships and years of thoughtful planning. Acquired in June of 2000 through a partnership between the City of Colorado Springs, Colorado Parks & Wildlife, Great Outdoors Colorado (GOCO), Colorado Lottery, El Paso County and other local private organizations, the park represents the protection of one of the last significant open spaces along the southern section of the Colorado Front Range.

Formerly the JL Ranch, the 2701 acre park is nestled beneath the eastern flank of Cheyenne Mountain just south of Colorado Springs. The park offers a stunning transition from Colorado's plains to its peaks. The land is in remarkable natural condition and diverse wildlife viewing opportunities abound due to the property's relatively undisturbed and unfragmented nature.

Opened in October 2006, Cheyenne Mountain State Park offers superior facilities and recreational opportunities. The highlight of any visit is the park's trail system, offering over 28 miles of trails. These pathways allow visitors many opportunities to explore the parks natural beauty. Along with trails, the park offers picnicking, wildlife viewing, camping, 9 hole disc golf course, an archery range and visitor center with gift shop and interpretive displays.

Regulations

Cheyenne Mountain State Park is managed and maintained for your enjoyment and for the protection of the park's natural resources. Please observe the following rules for the safety and enjoyment of all park visitors.

- Camping allowed in designated areas only.
- All open fires must be contained within grills



or the metal fire rings provided.

- Smoking is not allowed on the trails, archery ranges or in the backcountry.
- Pets are allowed in the developed areas (i.e. parking lots and picnic sites) and on designated trails.
- All pets must be kept on a 6' or shorter hand held leash and waste must be picked up immediately.
- Equestrian use is allowed on designated trails only.
- No climbing or rappelling on rock formations.
- Vehicles must remain on designated roads and parking areas.
- Tree cutting or wood gathering is not permitted.
- Place trash and litter in proper receptacles.
- No hunting is allowed in the park.
- Park is open from 5am to 10pm unless camping in a purchased designated campsite.

Passes

All visitors entering the park are required to display a current Colorado State Parks pass on their vehicle. A daily vehicle pass is valid from the day of purchase until noon the following day. Daily parks pass and annual vehicle passes are accepted at all Colorado State Parks. Annual



vehicle pass holders with additional vehicles may purchase a subsequent annual pass at a reduced price.

Vehicle passes are sold at the Visitor Center and Park Entrance. In the event of these locations being closed, a pass may be obtained at the entrance and the Archery Range parking lot. For credit/debit purchase please use the Kiosk (American Express is not accepted).

Colorado Disabled Veteran (DV) License plates and Colorado Purple Heart plates are admitted free without a pass.

Colorado residents aged 64 years or older qualify for the Aspen Leaf Annual and multiple annual passes at a discounted rate. These are available at the Visitor Center.

Wildlife

Wildlife abounds in Cheyenne Mountain State Park. Deer, black bear, mountain lion, bobcat, as well as coyote, fox, and prairie dogs are just some of the animals that call the park home.

A wide variety of birds can also be found, including red-tail hawks, golden eagles and wild turkey. Find out more about Colorado's wildlife from the Colorado Parks & Wildlife website at www.cpw.state.co.us.

Education

The park is an excellent outdoor classroom. Park naturalists enjoy presenting programs or leading groups along the trails, exploring and sharing the wonders of nature. Please check the park's website for upcoming events or stop by the Visitor Center for more information.

Area Attractions

Colorado Springs has a rich natural and cultural history, and Cheyenne Mountain State Park is the perfect place to kick off your Pikes Peak region adventure. Area Attractions from the Garden of the Gods, to a ride up "America's Peak" on the cog are just a few must-see activities in the area.

Find out more at www.visitcos.com.



Rental Facilities

The park offers multiple options for private parties or functions. These include the following:

Prairie Skipper Pavilion

Prairie Falcon Amphitheater

Camper Services Meeting Room

Wedding packages are also available

Details and photographs of the facilities are provided on the Park's Web page. To book please call the Visitor Center at (719)576-2016.



Emergencies/First Aid

For Emergencies please call 911. All other non-emergent law enforcement / medical needs please call dispatch at (719)544-2424.

Fort Carson

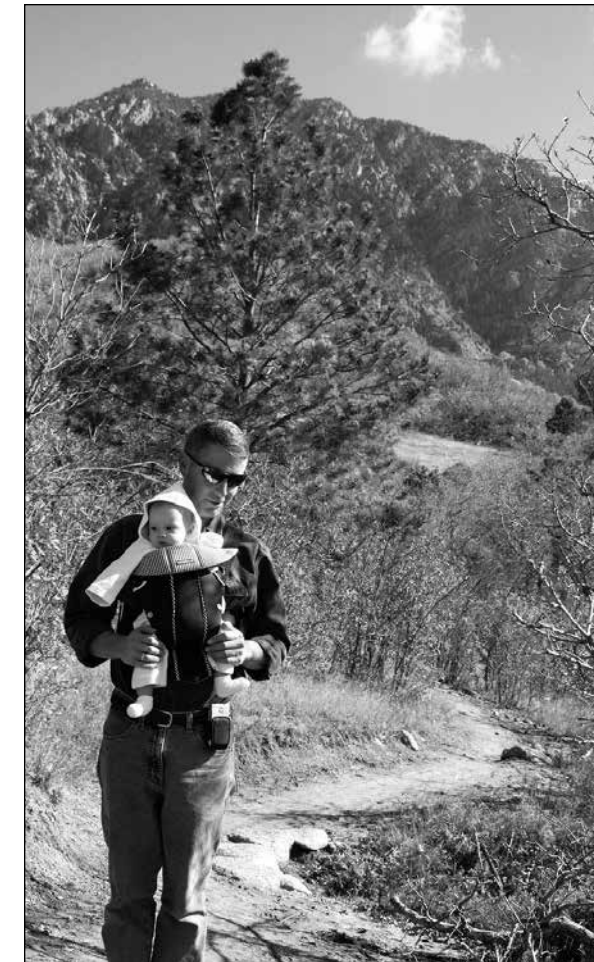
Due to the close proximity of the park to nearby military bases, visitors are likely to hear morning Reveille and other military customs. If you hear a siren, it is the weather alert system used to notify soldiers in the field of inclement weather in the area. You are advised to take appropriate precautions.

Friends of Cheyenne Mountain State Park

The Friends of Cheyenne Mountain State Park is a non-profit group that serves to protect, enhance, and preserve the natural state and spectacular beauty of the park. If you would like to join or donate to the Friends and play an important part in Cheyenne Mountain state Park, pick up an application at the Visitor Center or visit the friends at www.friendsofcmstp.org.

Picnicking

Distributed along a meandering trail, the park's 41 day-use picnic sites offer great views for family and friends enjoying a day at the park. Several sites are ADA accessible and can be easily accessed from the day use parking lots. A table and grill are provided at each site and they are available year-round on a first-come, first-serve basis.



Camping

New in 2022, two Camper Cabins, sleeping up to six people are available to rent with a two night minimum stay. Please visit our website for more information and to make reservations. The park boasts 51 full service campsites that include water, electric service (20, 30, and 50 amp), and sewer hookups. These sites range from 25-70 feet in length, and include a tent pad, fire ring, and picnic table. We also offer 10 unique walk-in basic tent sites nestled among the scrub oak. These include water, tent pad, fire ring, picnic table and bear proof box for storing food at the site.



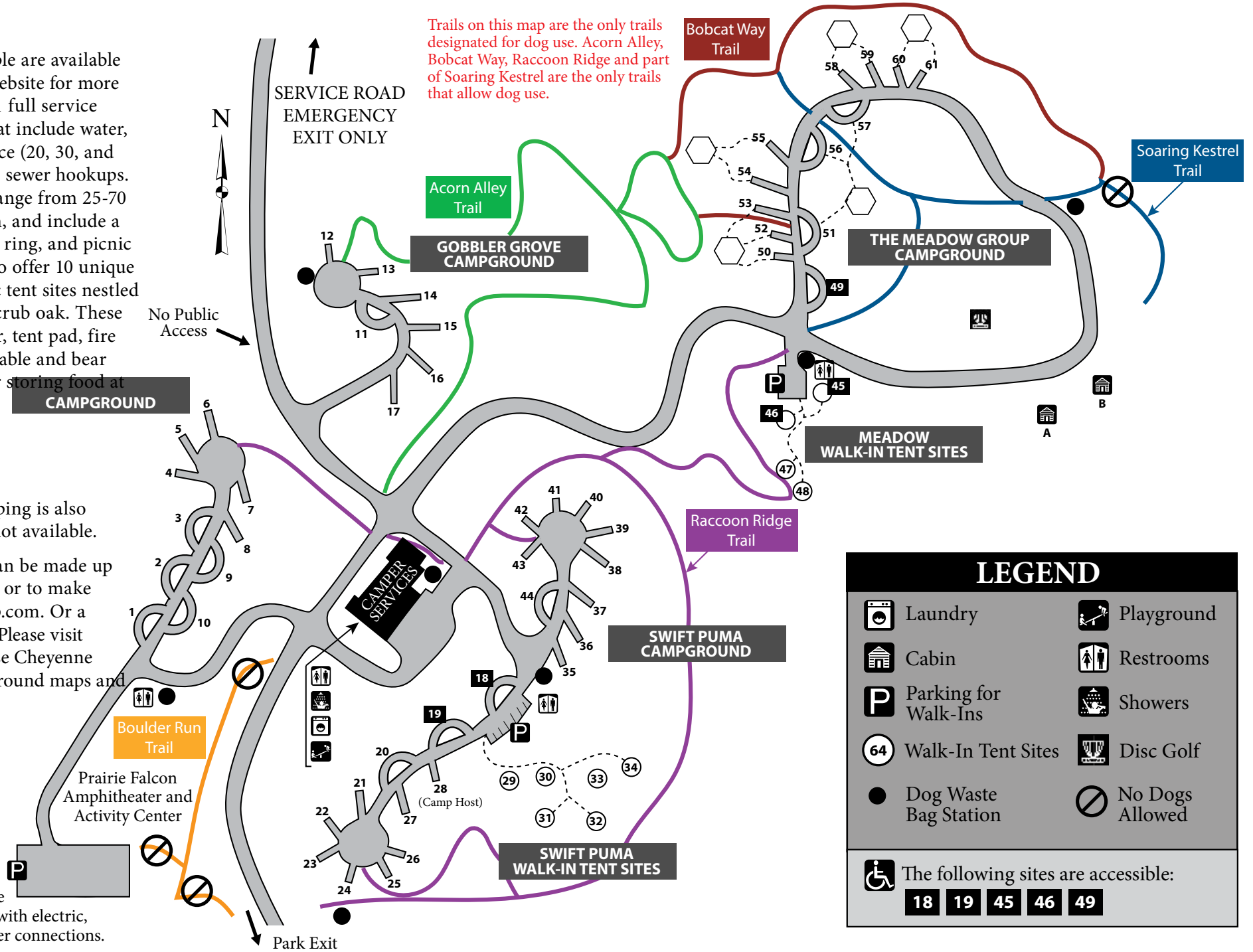
The Camper Services building is open in the spring through the fall and offers coin operated showers, coin operated laundry, vending machines, activity room and a playground. Camping is also available in the off season with limited facilities. Wifi is not available.

Services building is open in the spring through the fall and offers coin operated showers, coin operated laundry, vending machines, activity room and a playground. Camping is also available in the off season with limited facilities. Wifi is not available.

Reservations for campsites and cabins are required and can be made up to six months in advance. For more camping information or to make a reservation, Call 800-244-5613, or go online to [cpw.shop.com](http://www.cpw.shop.com). Or a reservation may be made in person at the Visitor Center. Please visit the park's website at <http://www.cpw.state.co.us> and choose Cheyenne Mountain under "find a park" to print out detailed campground maps and to make campsite reservations.



All RV sites are full hook-ups with electric, water and sewer connections.



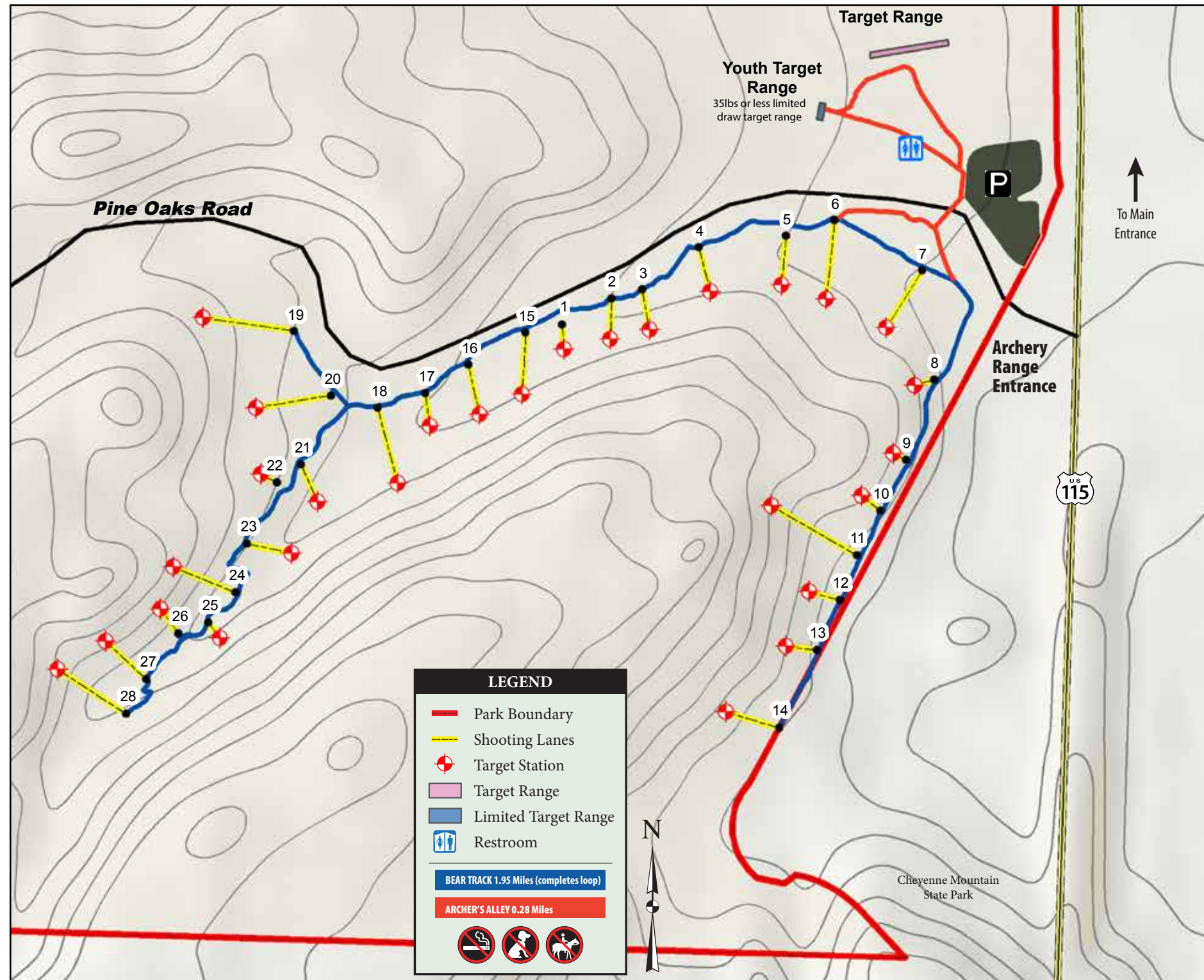
Archery Range

Archery Range facilities consist of a static range featuring 10 targets from 10-80 yards, a 35lb or less limited draw range with targets up to 20 yards, and a Field Range with 28 stations, some with 3D targets. All vehicles are required to have a valid vehicle parks pass; use of the static target range and the limited draw range are included with the parks pass fee. Use of the Field/3D ranges require an additional individual permit that can be purchased either at the self service station in the Archery Range Parking lot or at the Visitor Center during normal operating hours.

The range is open daily from sunrise to sunset but may be closed to the public during tournaments. Please check the website at cpw.state.co.us for any tournament information and other special regulations or call 719-576-2016.

Facilities

- Target Range–10 lanes ranging from 10 to 80 yards
- Limited Target Range–up to 20 yards (35 lbs or less limited draw target range)
- Field Range–consists of 28 Field targets
- 3D animal targets on portions of the Field Range



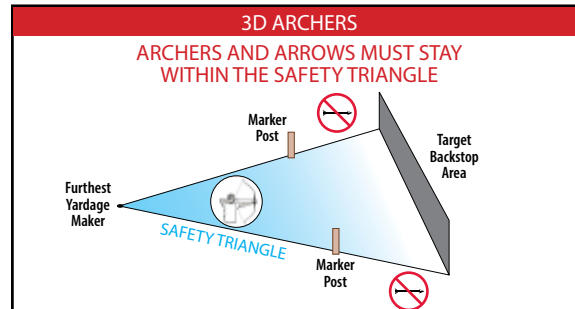
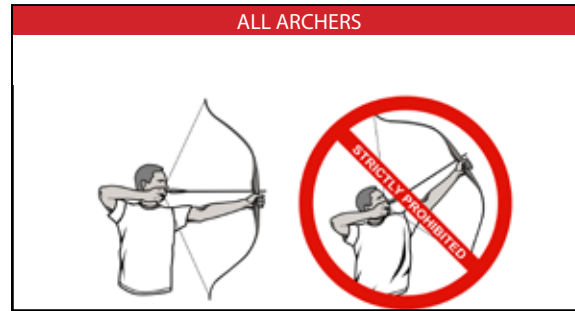
Archery Range Rules and Regulations

Cheyenne Mountain State Park is managed and maintained for your enjoyment and for the protection of the park's natural resources. Please observe the following rules for the safety and enjoyment of all park visitors.

- Vehicle pass required and must be displayed in the windshield of all vehicles at all times.
- Daily or Annual Individual Archery Range Permit is required for all archers (17 years and older) shooting the Field/3D range.
- Daily and Annual Individual Range Permits must be kept with you and available for inspection and are non-transferable.
- Anyone 16 years and younger must be under direct adult supervision.
- No Broadheads.
- No Crossbows.
- No Firearms, BB Guns, or Air Rifles.
- No Camping.
- For your safety, stay on the trail system.
- Pets are not allowed on the range facilities.
- No Alcohol.
- Place trash and litter in proper receptacles.
- Smoking is not allowed on the trails, parking lot, or on the Archery Range Facility.
- Live animals on the range, no hunting is allowed in the park. Do not shoot the wildlife.
- Be Sure of Your Target and Beyond.
- Range is open Sunrise to Sunset.

Location

- Main park entrance – 2 miles south of South Academy Blvd. on Hwy 115, across from Fort Carson Gate #1 (State Park Road)
- Range – 3.4 miles south of South Academy Blvd. on Hwy 115, across from Fort Carson Gate #5 (Pine Oaks Road)



Individual Archery Range Permit

All Archers shooting the Field/3D Range targets must have on their person a valid individual archery range permit in addition to a vehicle parks pass. A daily individual archery range permit is valid for the date of purchase only and is non-transferable.

Daily individual archery range permits are sold through self service at the archery range parking lot self service station or at the park Visitor Center at the main entrance. Annual individual archery range permits are sold only at the park Visitor Center. Archers 16 and younger are not required to purchase this permit.





Welcome to Cheyenne Mountain State Park

A valid Colorado State Park Pass is required on every vehicle entering the park. A self-service pass dispenser is available when the Visitor Center or Entrance Station are closed.

- Visitors with dogs are welcome in the developed areas and on the designated trails only.
- They must be kept on a 6' or shorter hand held leash and all waste must be picked up and disposed of immediately.

Visitor Center: 719-576-2016

Emergency: 911 or *CSP

Trail Map Key

- Acorn Alley: .53 Miles
- Archer's Alley: .28 Miles
- Bear Track: 1.95 Miles
- Blackmer Loop: 3.52 Miles
- Bobcat Way: .40 Miles
- Boulder Run: 1 Mile
- Cougar's Shadow: .85 Miles
- Coyote Run: 1.37 Miles
- Dixon: 4.5 Miles
- Dragon's Backbone: 0.8 Miles
- Little Bear: .1 Miles
- Medicine Wheel: .5 Miles
- Mountain Loop: 1.4 Miles
- Raccoon Ridge: .55 Miles
- Soaring Kestrel: .82 Miles
- Sundance: 3.29 Miles
- Talon: 2.64 Miles
- Talon (South): .98 Miles
- Talon (North): 1.60 Miles
- Turkey Trot: .46 Miles
- Zook Loop: 1.03 Miles

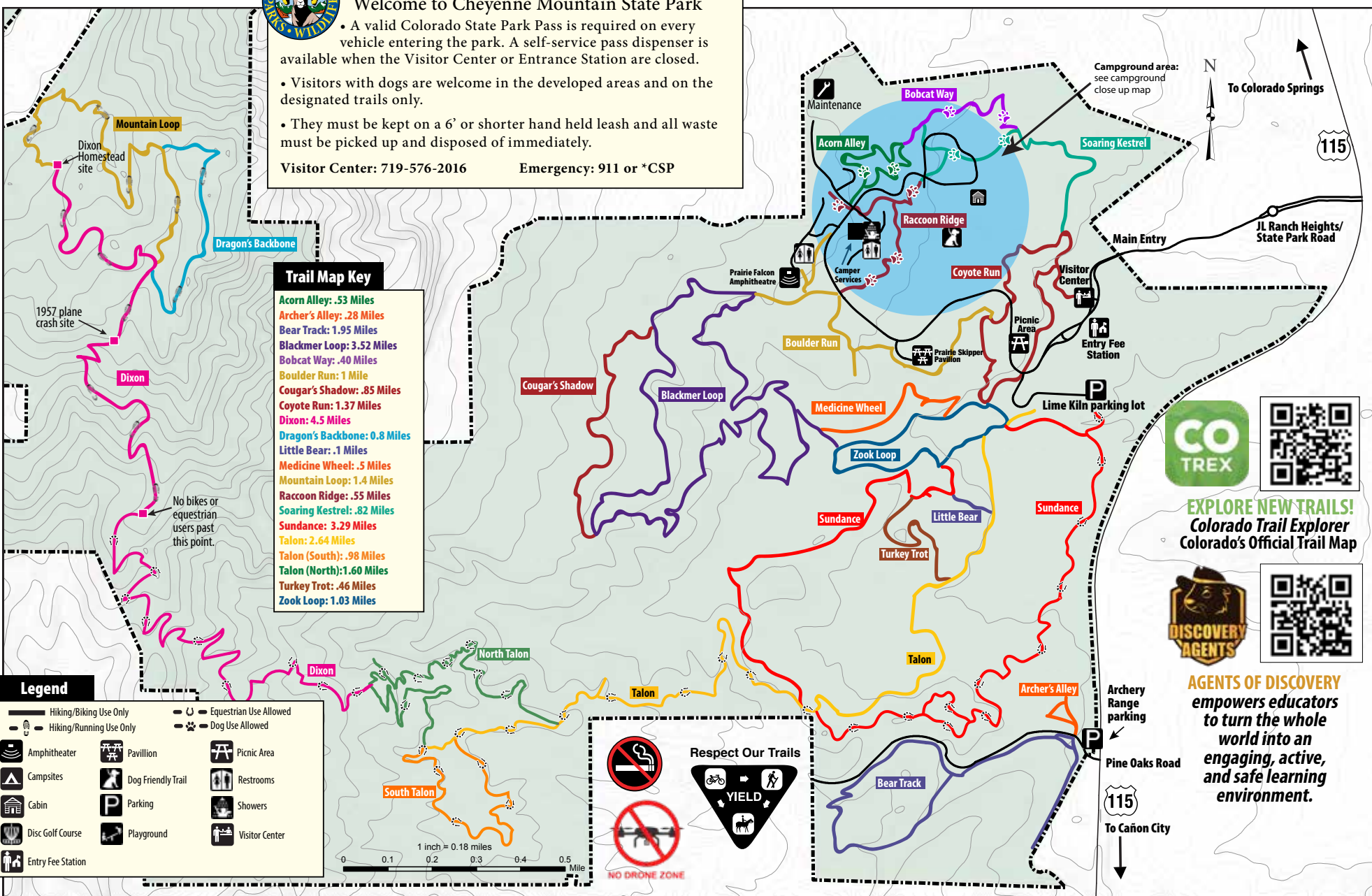
No bikes or equestrian users past this point.

Legend

1 inch = 0.18 miles
0 0.1 0.2 0.3 0.4 0.5 Mile

Respect Our Trails

NO DRONE ZONE



Trail Information

The park has 21 diverse trails that total over 28 miles. They are rated easy to moderate in difficulty and take hikers and bikers on a nature adventure throughout the 2701-acre park. Visitors can wander through grasslands filled with prairie dogs or explore the pines and try to catch a glimpse of mule deer. For your safety, take notice of the markers along every trail. GPS coordinates are on all trail signage and will help park staff locate hikers and bikers in case of emergencies on the trail. Smoking is strictly prohibited on the trail system and in the backcountry.

Designated Dog Trails

Leashed dogs are welcomed on approximately 2 miles of designated trails; Acorn Alley, Bobcat Way, Raccoon Ridge and a portion of Soaring Kestrel. Multiple waste bag dispensers and trash receptacles are provided to maintain the cleanliness of our park. Dogs must be kept on a 6' or shorter hand held leash. Dogs are not allowed on any other trails or in the backcountry.

Designated Equestrian Trails

Equestrians are welcomed on a designated portion of our trail system with an out and back trip totaling 8 miles. Trailer parking and trail access is located at the east end of the Limekiln Trailhead parking lot. From there, users may access the eastern portion of Sundance trail, linking to the upper portion of Talon trail, along with all of North and South Talon trails. The trails gain elevation and the terrain is steep and narrow on the North and South Talon trail sections. Horses and trailers are not allowed in the campgrounds or other parking areas.



EXPLORE NEW TRAILS!
Colorado Trail Explorer
Colorado's Official Trail Map



AGENTS OF DISCOVERY
empowers educators
to turn the whole
world into an
engaging, active,
and safe learning
environment.