

# Golden Gate Canyon State Park



## Who we are

Golden Gate Canyon State Park offers a variety of recreation opportunities within an hour's drive of the Denver Metro Area. Over thirty-five miles of trails await the outdoor enthusiast, providing access to high mountain meadows, lush streamside corridors, rocky peaks and dense forest. Overnight accommodations range from the Harmsen Ranch Guest House, to tent and RV sites at the family-friendly Reverend's Ridge Campground, to rustic backcountry sites with no amenities. First class campgrounds, picnic areas, trails and fishing areas are nestled within nearly 12,000 acres of semi-wilderness. Panorama Point Scenic Overlook offers spectacular views of over 100 miles of Colorado's Continental Divide throughout the year. Sportsmen of all ages and abilities will find numerous hunting and fishing opportunities within the boundaries of this spectacular state park.

## Top attractions

- Over 35 miles of trails, offering a variety of opportunities for hiking, bicycling, winter sports and horseback riding
- Year-round overnight accommodations, including cabins, yurts, Harmsen Ranch Guest House, electric RV sites, tent camping and backcountry campsites and shelters
- Panorama Point Scenic Overlook offers views of 100 miles of snow-capped peaks along the Continental Divide
- Various group facilities, including Rifleman Philips Campground, Red Barn Picnic Area and Works Ranch Group Area
- Regularly stocked fishing ponds along park roads and in the backcountry, in addition to small and big game hunting areas

## Our partners

- The Clinton Family Foundation
- Colorado State Forest Service
- Larkin Family Trust
- Gilpin County
- Jefferson County
- Leave No Trace Center for Outdoor Ethics

## Challenges we face

- Ensuring forest health, fuel mitigation, mountain pine beetle mitigation and noxious weed resource management projects are funded and completed annually through coordinated efforts between the park and Colorado State Forest Service staff and volunteers
- Augmenting operational and personnel resources with increased efforts to recruit and train individual and group volunteers
- Seeking private donations to maintain and enhance the park's 35+ miles of multiple-use trails, access roads and backcountry campgrounds
- Overcrowding and capacity issues across the park requiring additional staffing resources and law enforcement activities
- Balancing expanded recreational uses and facility maintenance with limited operating budgets

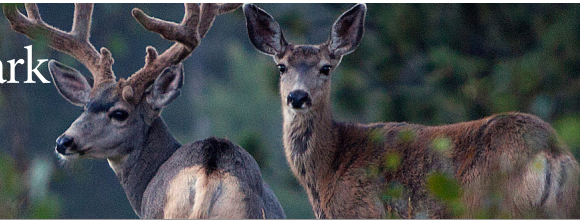


KEN PALEO/HIGH COUNTRY COLORING

# Golden Gate Canyon State Park

92 Crawford Gulch Road, Golden, CO 80403  
(303) 582-3707 • goldengatepark@state.co.us  
Park Manager: Todd Farrow

As of July 1, 2022



CPW

## Volunteer activities

- Campground host program at Reverend's Ridge and Aspen Meadow Campgrounds.
- Volunteer naturalist program at Reverend's Ridge Campground and the Visitor Center.
- Visitor Center host program, which was initiated to assist with staffing needs.
- Scout groups and other volunteers continue to assist with trails and natural resource projects throughout the park.

## Geography

Region: Northeast  
County: Gilpin and Jefferson  
Year Acquired: 1960  
Elevation (ft): 9,100  
Miles From Denver: 30

## Acreage

Total Acres: 12,119

## Governmental

US Cong Dist: 2<sup>nd</sup>  
CO Senate: 8<sup>th</sup> and 20<sup>th</sup>  
CO House: 27<sup>th</sup> and 49<sup>th</sup>

## Annual Visitation

FY 22: ~1.33 million

## Employees

Permanent: 9 (as of July 1, 2023)  
Temporary: 15  
Volunteers (FY 22): 188  
Hours (FY 22): 6,887

## Facilities

125 picnic sites  
Dump station  
Group picnic area  
Laundry  
Showers  
Horse corrals  
Horse trailer parking  
Visitor center  
Wedding facilities - Red Barn only

## Roads

Paved: 8.7 miles  
Unpaved: 2.7 miles

## Trails

Biking: 18 miles  
Hiking: 35 miles  
Horseback: 18 miles  
Cross Country Skiing/  
Snowshoeing: 35 miles  
Total: 35 miles

## Recreation

Backcountry camping  
Fishing  
Geocaching  
Horseback riding  
Hunting  
Ice Fishing  
Ice Skating  
Picnicking  
Ranger/nature programs  
Rock climbing  
Snowtubing  
Wildlife/bird viewing  
Winter camping

## Camping

Guest House (year-round): 1  
Cabins/Yurts (year-round): 7  
Campsites (basic, year-round): 73  
Campsites (electrical, year-round): 59  
Campsites (primitive, year-round):  
24 Group Facilities (seasonal): 2

