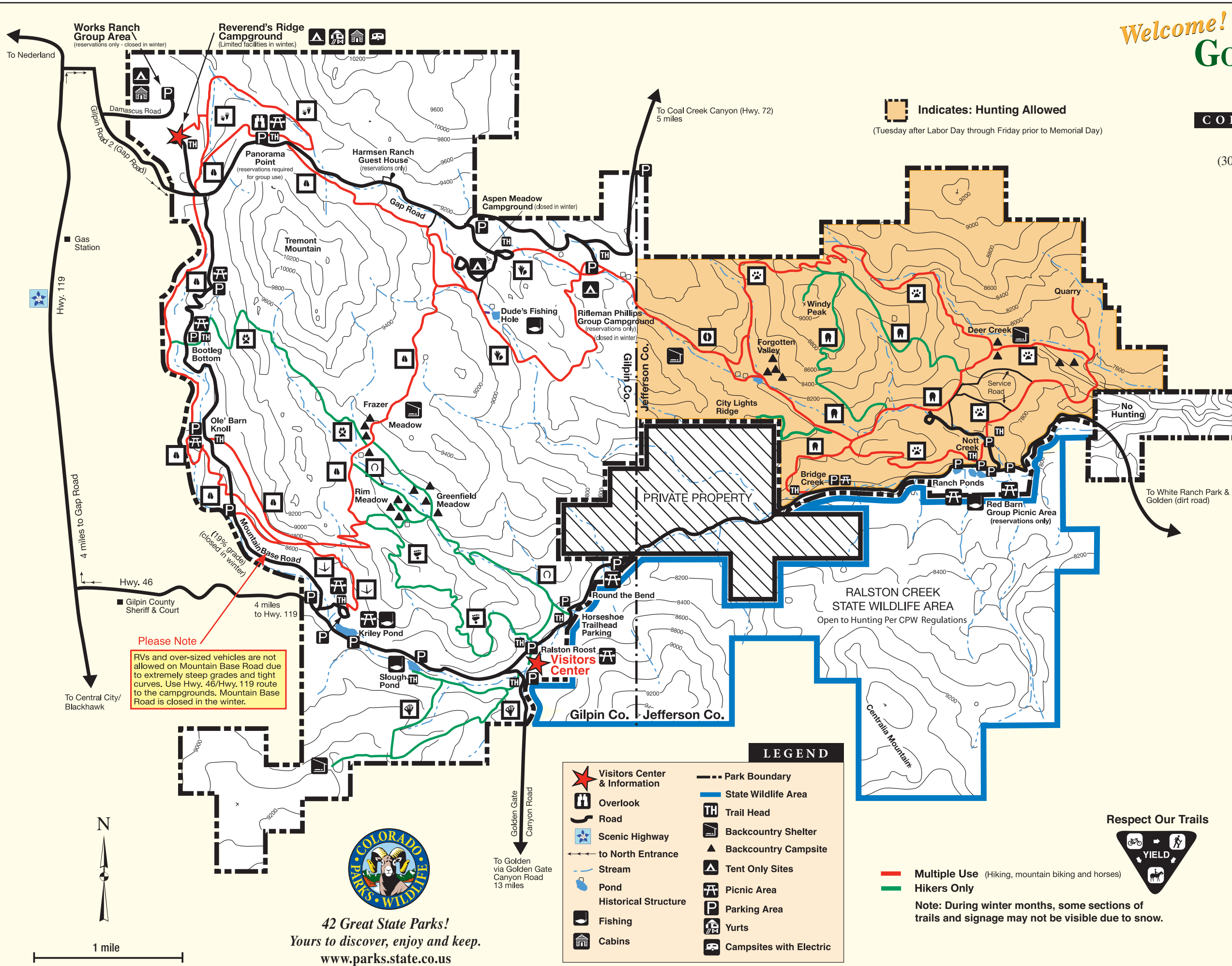


Welcome!

GOLDEN GATE CANYON STATE PARK

COLORADO PARKS & WILDLIFE

92 Crawford Gulch Road • Golden, CO 80403
 (303) 582-3707 • E-mail: golden.gate.park@state.co.us



Indicates: Hunting Allowed
 (Tuesday after Labor Day through Friday prior to Memorial Day)

TRAILS

	Beaver - Most Difficult Start: Visitor Center End: Visitor Center	2.5 mi.
	Black Bear - Most Difficult Start: Ralston Roost Trailhead End: Intersection with Mule Deer Trail	2.8 mi.
	Blue Grouse - Moderate Start: Kriley Pond End: Intersection with Mule Deer Trail	0.7 mi.
	Buffalo - Moderate Start: Rifleman Phillips End: Forgotten Valley	1.2 mi.
	Burro - Difficult Start: Bridge Creek End: Bridge Creek	4.5 mi.
	Burro - To City Lights Ridge Start: Bridge Creek End: City Lights Ridge	1.2 mi.
	Coyote - Most Difficult Start: Bootleg Bottom End: Frazer Meadow	2.0 mi.
	Horseshoe - Moderate Start: Horseshoe Trailhead End: Frazer Meadow	1.8 mi.
	Mountain Lion - Difficult Start: Nott Creek End: Nott Creek	6.7 mi.
	Mule Deer - Moderate Start: Ole' Barn Knoll End: Ole' Barn Knoll via Panorama Point	7.4 mi.
	Raccoon - Moderate Start: Reverend's Ridge End: Reverend's Ridge via Panorama Point	2.5 mi.
	Snowshoe Hare - Difficult Start: Aspen Meadow End: Aspen Meadow	3.0 mi.

42 Great State Parks!
 Yours to discover, enjoy and keep.
www.parks.state.co.us