

Connected Lakes Section Trail Use Map



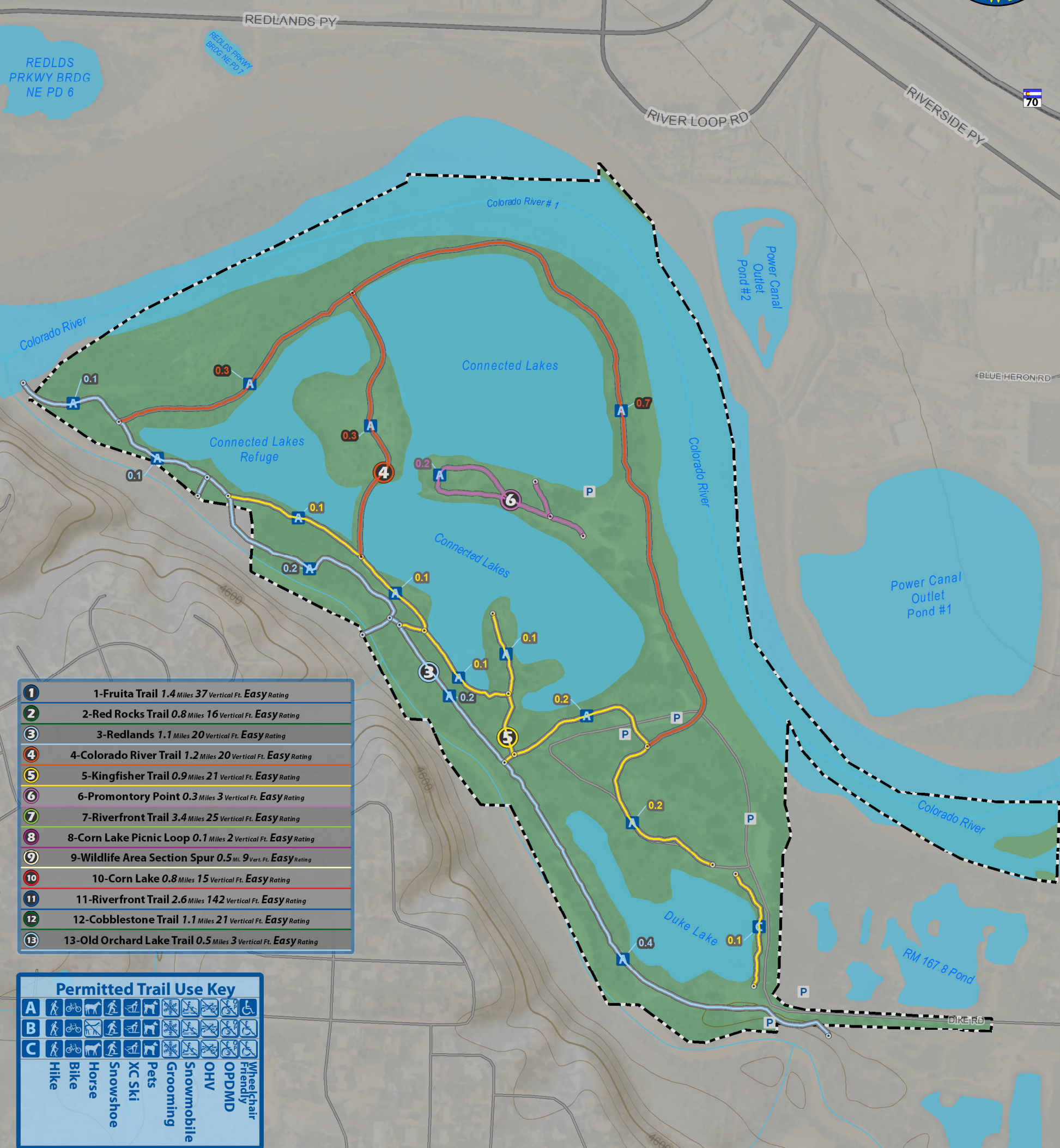
39.09° N

39.08° N

4,333,000

4,332,000

4,331,000



1	1-Fruita Trail 1.4 Miles 37 Vertical Ft. Easy Rating
2	2-Red Rocks Trail 0.8 Miles 16 Vertical Ft. Easy Rating
3	3-Redlands 1.1 Miles 20 Vertical Ft. Easy Rating
4	4-Colorado River Trail 1.2 Miles 20 Vertical Ft. Easy Rating
5	5-Kingfisher Trail 0.9 Miles 21 Vertical Ft. Easy Rating
6	6-Promontory Point 0.3 Miles 3 Vertical Ft. Easy Rating
7	7-Riverfront Trail 3.4 Miles 25 Vertical Ft. Easy Rating
8	8-Corn Lake Picnic Loop 0.1 Miles 2 Vertical Ft. Easy Rating
9	9-Wildlife Area Section Spur 0.5 Mi. 9 Vert. Ft. Easy Rating
10	10-Corn Lake 0.8 Miles 15 Vertical Ft. Easy Rating
11	11-Riverfront Trail 2.6 Miles 142 Vertical Ft. Easy Rating
12	12-Cobblestone Trail 1.1 Miles 21 Vertical Ft. Easy Rating
13	13-Old Orchard Lake Trail 0.5 Miles 3 Vertical Ft. Easy Rating

Permitted Trail Use Key	
A	Hike
B	Bike
C	Horse
	Snowshoe
	XC Ski
	Pets
	Grooming
	Snowmobile
	OHV
	OPDM
	Wheelchair
	Friendly

CPW PocketTrail Map # 24 of 60

James M. Robb - Colorado River Trail Use Map: CRP_3of5 showing trails within the Connected Lakes Section

Last Updated: 9/9/2013 7:51:48 AM
Created by the Colorado State Trails Program
Email revisions to: trails@state.co.us

340

Infrastructure Legend

	Visitor Center (0)		Trail Intersections
	Entrance station (0)		CPW Public Roads
	Fee Station (0)		CDOT Highways
	Restroom (0)		CDOT Major Roads
	Campground (0)		CDOT Local Roads
	Drinking Water (0)		CPW Service Roads
	Historic Site (0)		Rivers Diversions
	Playground (0)		CPW Parking Lots
	Parking (6)		CPW Boundaries
	Scenic Overlook (0)		
	Wildlife Watching (0)		

Cartographic Information

0 0.1 0.2 Miles

Scale: 1:6,000

Declination as of January 2013:
10.3406° changing by -0.127° per year

Coordinate System: NAD 1983 UTM Zone 13N

Department of Natural Resources Disclaimer:
The Colorado Department of Natural Resources ("DNR") is not responsible and shall not be liable to the user for damages of any kind arising out of the use of data or information provided by DNR, including the installation of the data or information, its use, or the results from its use. ANY DATA OR INFORMATION PROVIDED BY THE DNR IS PROVIDED "AS IS" WITHOUT WARRANTY OF ANY KIND, EITHER EXPRESS OR IMPLIED, INCLUDING, BUT NOT LIMITED TO, THE IMPLIED WARRANTIES OF MERCHANTABILITY AND FITNESS FOR A PARTICULAR PURPOSE. Data or information provided by DNR shall be used and relied upon only at the user's sole risk, and the user agrees to indemnify and hold harmless the DNR, its officials, officers and employees from any liability arising out of the use of the data/information provided.

http://bit.ly/CRP_3of5

Download Map as .pdf

Blue GPS Grid = decimal degrees (WGS84)

Green GPS Grid = meters UTM Zone 13 North (NAD 1983)