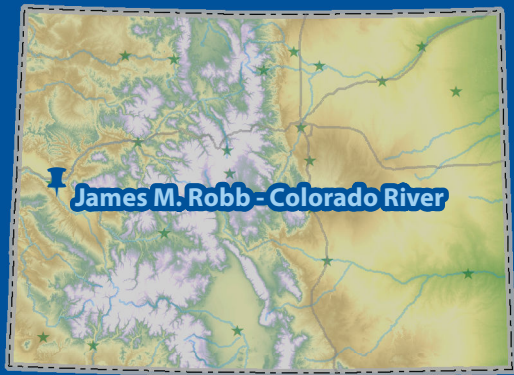




# Pear Park, Wildlife Area & Corn Lake Trail Use Map

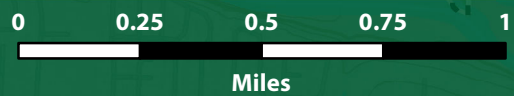
CPW PocketTrail Map # 25 of 60



James M. Robb - Colorado River Trail Use Map: CRP\_4of5 showing trails within the Pear Park, Wildlife Area & Corn Lake  
 Last Updated: 9/6/2013 2:08:22 PM  
 Created by the Colorado State Trails Program  
 Email revisions to: Eric.Drummond@state.co.us

## Cartographic Information

- |                       |                     |
|-----------------------|---------------------|
| Visitor Center (0)    | Trail Intersections |
| Entrance station (0)  | CPW Public Roads    |
| Fee Station (0)       | CDOT Highways       |
| Restroom (3)          | CDOT Major Roads    |
| Campground (0)        | CDOT Local Roads    |
| Drinking Water (1)    | CPW Service Roads   |
| Historic Site (0)     | Rivers   Diversions |
| Playground (0)        | CPW Parking Lots    |
| Parking (6)           | CPW Boundaries      |
| Scenic Overlook (0)   |                     |
| Wildlife Watching (1) |                     |



Scale: 1:25,000

Declination as of January 2013:

10.3406° changing by -0.127° per year

Coordinate System: NAD 1983 UTM Zone 13N

Department of Natural Resources Disclaimer:  
 The Colorado Department of Natural Resources ("DNR") is not responsible and shall not be liable to the user for damages of any kind arising out of the use of data or information provided by DNR, including the installation of the data or information, its use, or the results from its use. ANY DATA OR INFORMATION PROVIDED BY THE DNR IS PROVIDED "AS IS" WITHOUT WARRANTY OF ANY KIND, EITHER EXPRESS OR IMPLIED, INCLUDING, BUT NOT LIMITED TO, THE IMPLIED WARRANTIES OF MERCHANTABILITY AND FITNESS FOR A PARTICULAR PURPOSE. Data or information provided by DNR shall be used and relied upon only at the user's sole risk, and the user agrees to indemnify and hold harmless the DNR, its officials, officers and employees from any liability arising out of the use of the data/information provided.

Download Map as .pdf

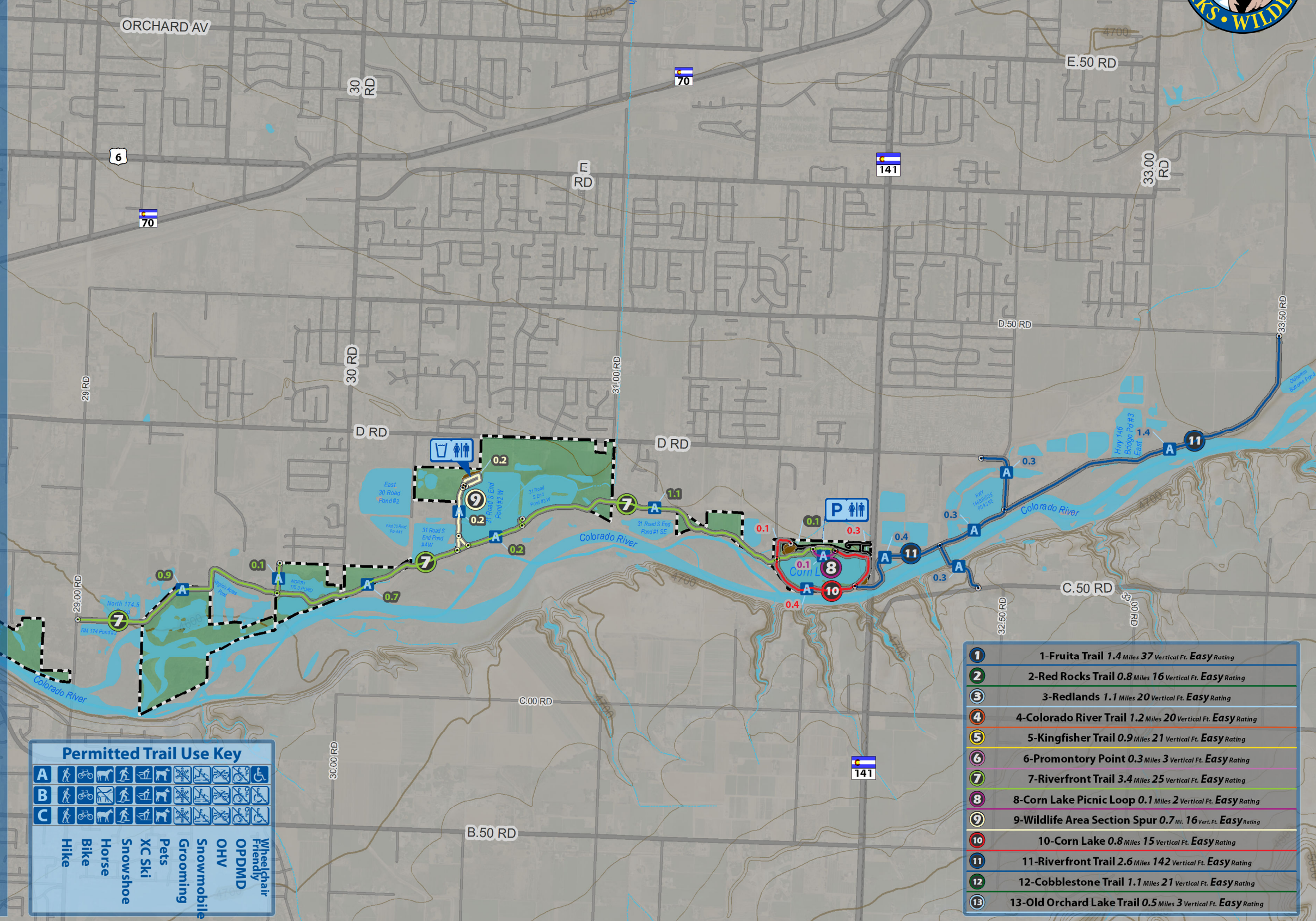


[http://bit.ly/CRP\\_4of5](http://bit.ly/CRP_4of5)

## Permitted Trail Use Key

|   |      |      |       |          |        |      |          |            |     |       |                     |
|---|------|------|-------|----------|--------|------|----------|------------|-----|-------|---------------------|
| A |      |      |       |          |        |      |          |            |     |       |                     |
| B |      |      |       |          |        |      |          |            |     |       |                     |
| C |      |      |       |          |        |      |          |            |     |       |                     |
|   | Hike | Bike | Horse | Snowshoe | XC Ski | Pets | Grooming | Snowmobile | OHV | OPDMD | Wheelchair Friendly |

|    |                              |           |                  |             |
|----|------------------------------|-----------|------------------|-------------|
| 1  | 1-Fruita Trail               | 1.4 Miles | 37 Vertical Ft.  | Easy Rating |
| 2  | 2-Red Rocks Trail            | 0.8 Miles | 16 Vertical Ft.  | Easy Rating |
| 3  | 3-Redlands                   | 1.1 Miles | 20 Vertical Ft.  | Easy Rating |
| 4  | 4-Colorado River Trail       | 1.2 Miles | 20 Vertical Ft.  | Easy Rating |
| 5  | 5-Kingfisher Trail           | 0.9 Miles | 21 Vertical Ft.  | Easy Rating |
| 6  | 6-Promontory Point           | 0.3 Miles | 3 Vertical Ft.   | Easy Rating |
| 7  | 7-Riverfront Trail           | 3.4 Miles | 25 Vertical Ft.  | Easy Rating |
| 8  | 8-Corn Lake Picnic Loop      | 0.1 Miles | 2 Vertical Ft.   | Easy Rating |
| 9  | 9-Wildlife Area Section Spur | 0.7 Mi.   | 16 Vert. Ft.     | Easy Rating |
| 10 | 10-Corn Lake                 | 0.8 Miles | 15 Vertical Ft.  | Easy Rating |
| 11 | 11-Riverfront Trail          | 2.6 Miles | 142 Vertical Ft. | Easy Rating |
| 12 | 12-Cobblestone Trail         | 1.1 Miles | 21 Vertical Ft.  | Easy Rating |
| 13 | 13-Old Orchard Lake Trail    | 0.5 Miles | 3 Vertical Ft.   | Easy Rating |



39.08° N  
39.07° N  
39.06° N  
39.05° N  
39.04° N

108.54° W  
108.53° W  
108.52° W  
108.51° W  
108.5° W  
108.49° W  
108.48° W  
108.47° W  
108.46° W  
108.45° W  
108.44° W

4,332,000  
4,331,000  
4,330,000  
4,329,000  
4,328,000  
4,327,000

Blue GPS Grid = decimal degrees (WGS84)  
 Green GPS Grid = meters UTM Zone 13 North (NAD 1983)

194,000 195,000 196,000 197,000 198,000 199,000 200,000 201,000 202,000 203,000