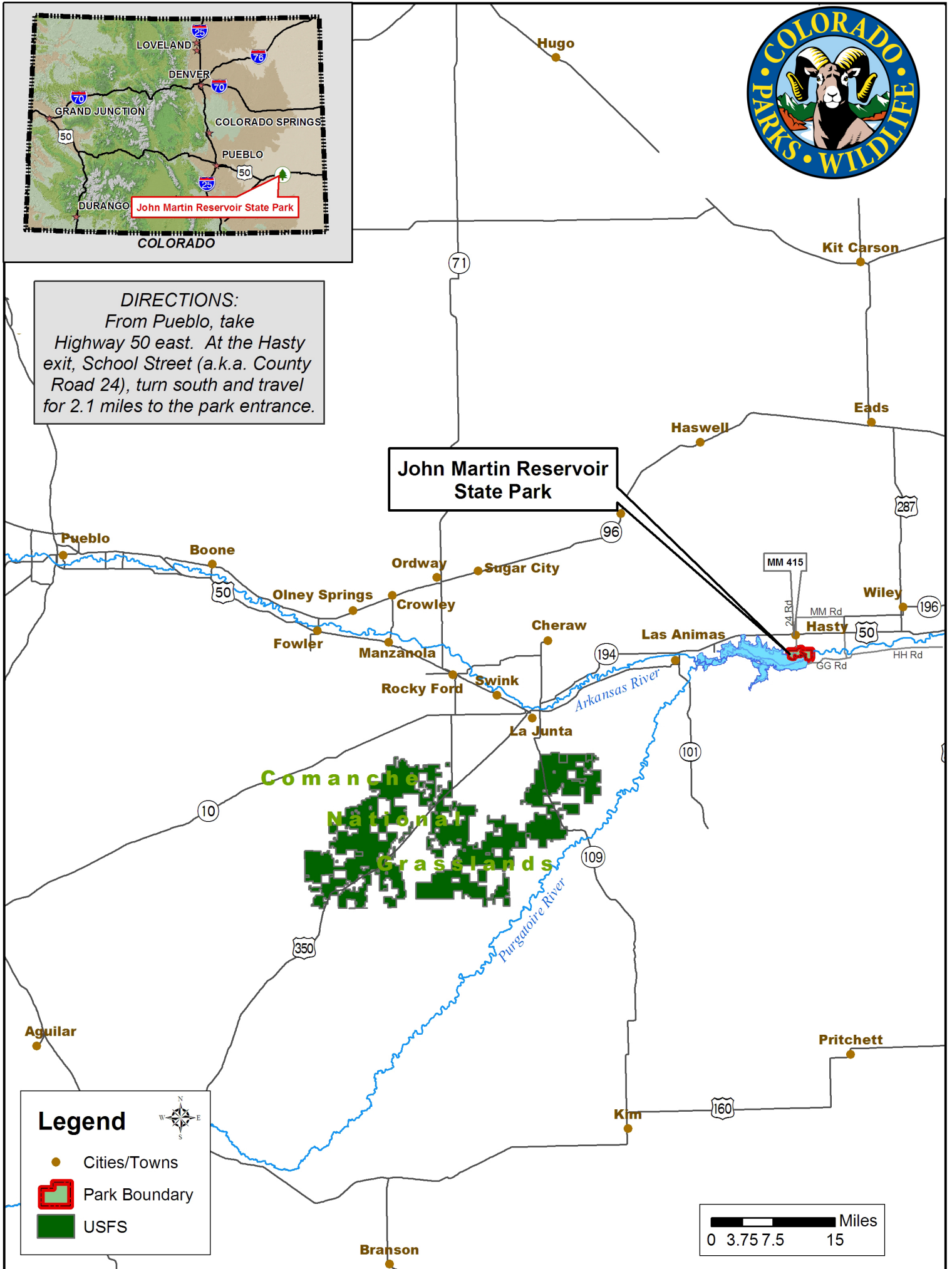




DIRECTIONS:
From Pueblo, take
Highway 50 east. At the Hasty
exit, School Street (a.k.a. County
Road 24), turn south and travel
for 2.1 miles to the park entrance.



John Martin Reservoir State Park

Comanche National Grasslands

Legend

- Cities/Towns
- ▭ Park Boundary
- USFS

