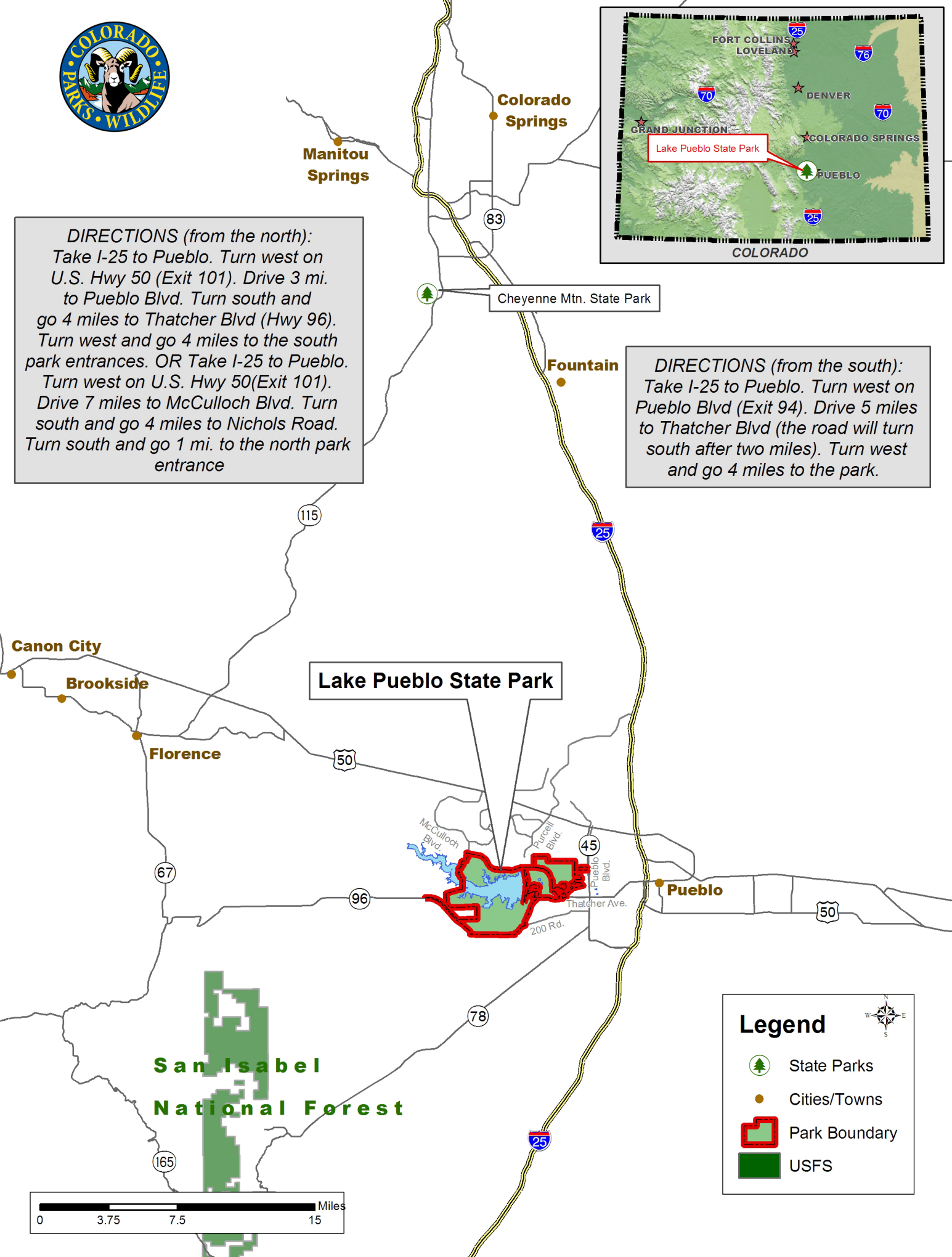




**DIRECTIONS (from the north):**  
 Take I-25 to Pueblo. Turn west on U.S. Hwy 50 (Exit 101). Drive 3 mi. to Pueblo Blvd. Turn south and go 4 miles to Thatcher Blvd (Hwy 96). Turn west and go 4 miles to the south park entrances. **OR** Take I-25 to Pueblo. Turn west on U.S. Hwy 50(Exit 101). Drive 7 miles to McCulloch Blvd. Turn south and go 4 miles to Nichols Road. Turn south and go 1 mi. to the north park entrance





**DIRECTIONS (from the south):**  
 Take I-25 to Pueblo. Turn west on Pueblo Blvd (Exit 94). Drive 5 miles to Thatcher Blvd (the road will turn south after two miles). Turn west and go 4 miles to the park.



**Lake Pueblo State Park**

**San Isabel National Forest**

**Legend**

-  State Parks
-  Cities/Towns
-  Park Boundary
-  USFS

