



TRAIL DISTANCE CHART

ID	TRAIL NAME	Miles
1	REVENUER'S RIDGE	1.61
2	SCHOOL POND	1.61
3	RANGER RIDGE	1.40
4	PREACHER'S HOLLOW	2.03
5	ROCK POND	2.38
6	WAPITI NATURE TRAIL	0.81
7	OUTLOOK RIDGE	1.09
8	RAVEN RIDGE OVERLOOK	0.28
9	RED TAIL OVERLOOK	0.34
10	LONE EAGLE OVERLOOK	0.34
11	LOST POND	0.49
12	HOMESTEAD	2.85
13	BLACK BEAR (TO BOUNDARY)	2.47
14	GOLDEN EAGLE	0.51
15	ROCK CANYON	0.75
16	GROUSE MOUNTAIN OVERLOOK	0.35
17	CHEESMAN RANCH	5.24
18	ELK MEADOW	2.38
19	PEAK VIEW	0.32
20	LIVERY TRAIL	0.48
21	ASPEN TRAIL	2.51
22	PEAK VIEW POND	0.80
23	STONER MILL	1.04
24	BROOK POND	0.21
25	GEER POND	1.32
26	BEAVER PONDS	0.42
27	OSBORN HOMESTEAD	1.19
28	TURKEY CABIN OVERLOOK	1.00
29	DRAGONFLY	0.20
30	NOBEL CABIN	0.85
31	MOUNTAIN LOGGER	0.58
32	DYNAMITE CABIN	0.67
33	BUFFALO ROCK	3.03
34	CAHILL POND	1.00
35	LOST STILL	0.30
36	MOONSHINE	0.88
44	FOUR MILE OVERLOOK (TO BOUNDARY)	0.83

Mueller State Park

Recreational Trails

All trails are open to hiking, snowshoeing, and cross-country skiing.

The Legend indicates trails open to biking and horseback riding.

Pets are prohibited on all trails and in the backcountry.

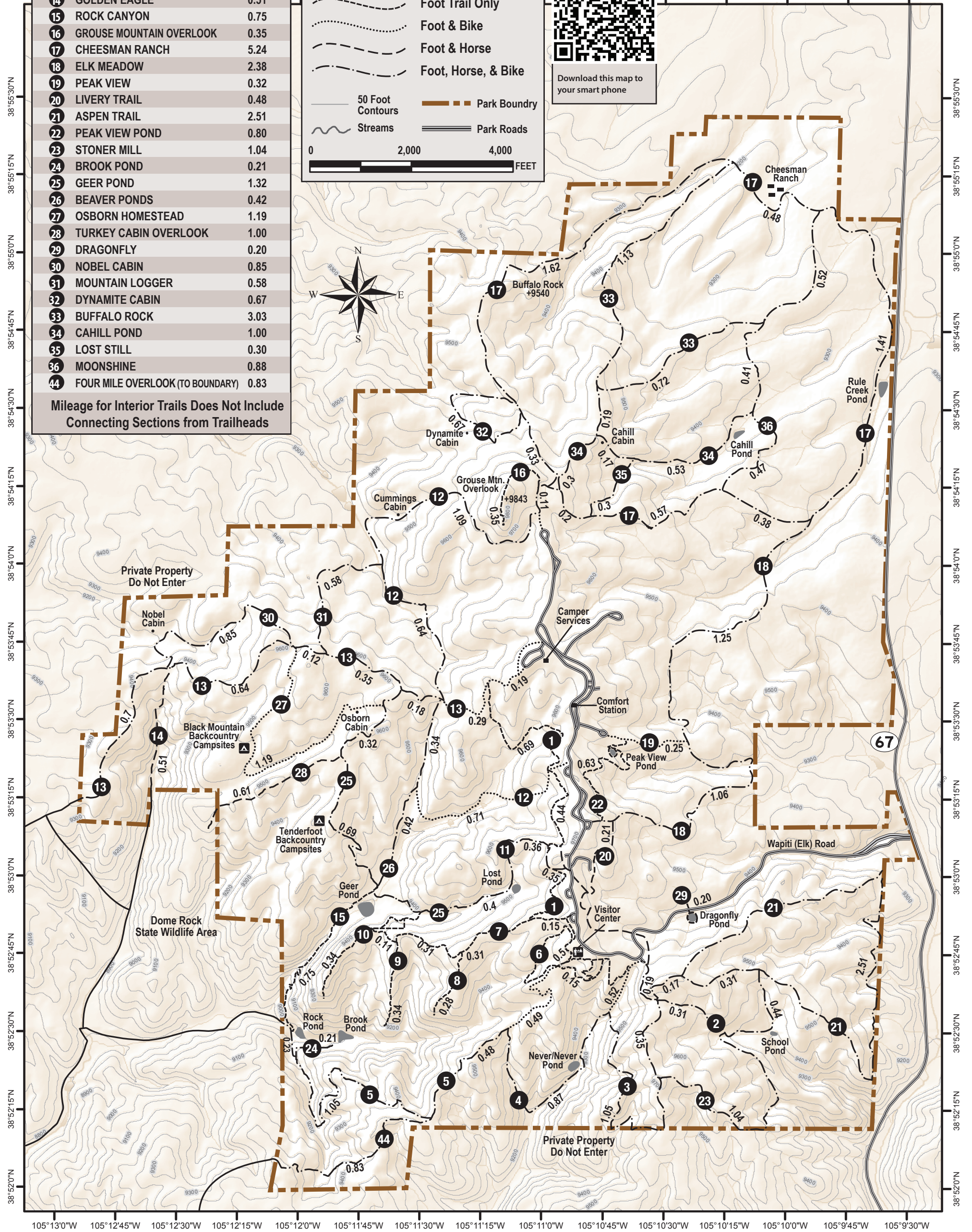
LEGEND

- Foot Trail Only
- Foot & Bike
- Foot & Horse
- Foot, Horse, & Bike
- 50 Foot Contours
- Streams
- Park Boundary
- Park Roads

0 2,000 4,000 FEET



Download this map to your smart phone



Mileage for Interior Trails Does Not Include Connecting Sections from Trailheads



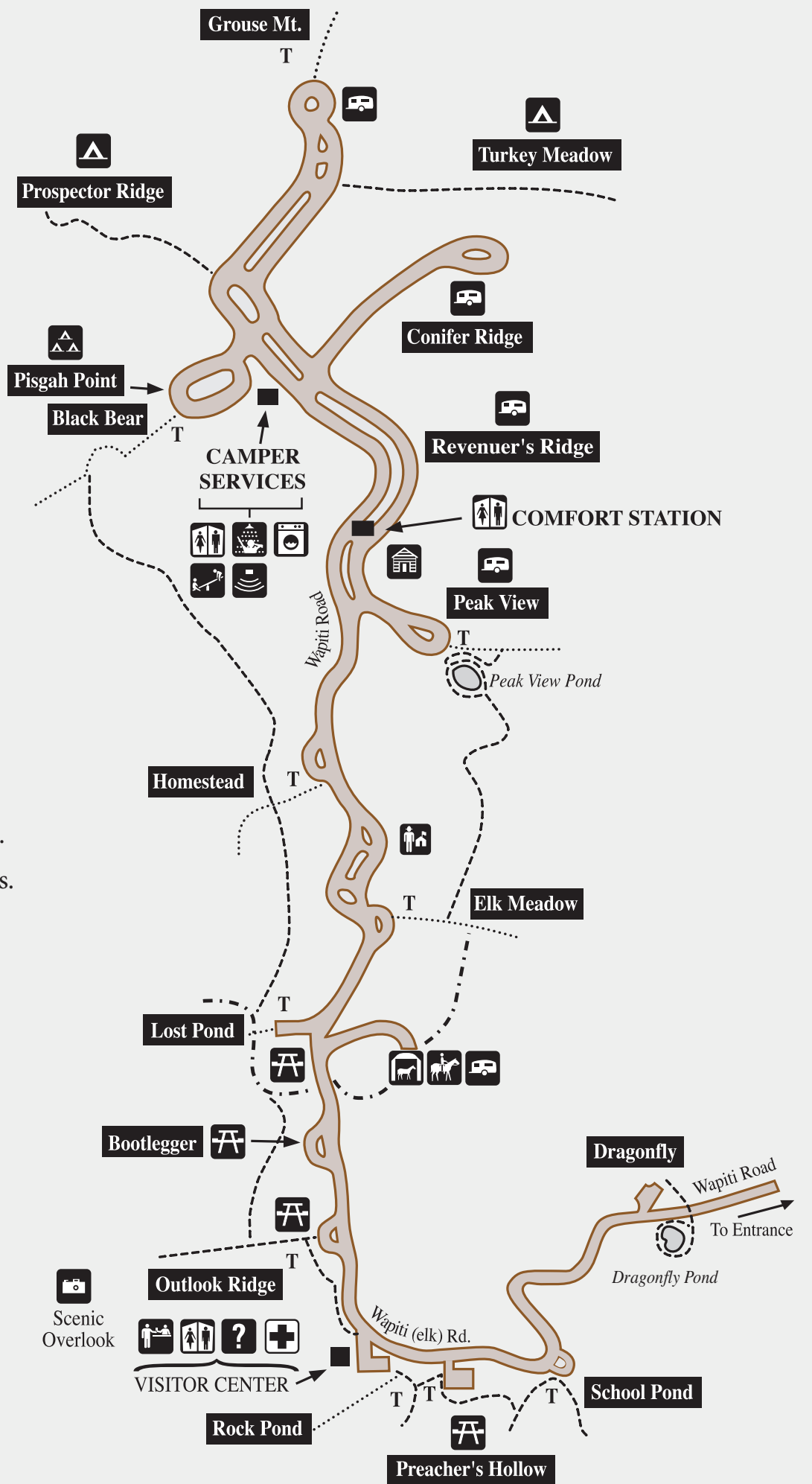
Mueller State Park

Please observe the following rules:

- Pets are prohibited on all trails, anywhere in the backcountry and at all ponds.
- Sign in and out at the trail register.
- Use only designated trails.
- Motorized use is prohibited on all trails.
- Respect natural and historic features.
- Pack out your trash.
- Camping is permitted in designated campsites in the developed campground only.
- Fires are permitted only in designated fire rings and grills.
- Refer to the legend on this map for designated use of trails.
- Do not shortcut trails.

LEGEND

Visitor Center	Playground
Amphitheater	Picnic Area
Camper Registration Station	Rental Cabins
Coin Shower	Restrooms
First Aid	Scenic Overlook
Group Camping	Trailhead
High-Use Campground	Walk-In Tent Camping
Horse Trailer Parking	Bicycle and Foot Trail
Horse Trailhead	Foot Trail
Information	Horse, Bicycle & Foot Trail
Laundry	



WILDLIFE VIEWING ETHICS AND TECHNIQUES

Watching wildlife in their natural habitat can be relaxing, exciting and rewarding. However, we must learn to do so with as little disturbance to the animal as possible.

The following are some suggestions for successful wildlife viewing:

- Wildlife is the most active at dawn, dusk and after dark. When viewing during times of low light do not use flashlights or spotlights.
- Get out and walk the trails to see wildlife. Viewing is especially good around creeks and ponds.
- Maintain a minimum distance of at least 100 feet from wildlife. If you cause the animal to move or change what it is doing, then you are too close.
- Do not feed any animal in the park. This may create a food source that the animal becomes dependent on.
- Do not chase any animal to get its picture. This is especially true of predators such as bears, mountain lions, coyotes and foxes.
- When photographing wildlife, use a telephoto lens so that you may keep your distance.
- Park regulations prohibit the collection of feathers, antlers, skulls, etc.
- Use binoculars or a spotting scope when viewing wildlife.
- For more information on viewing wildlife – ask a Park Ranger.

If you encounter a black bear ...

- **STAY CALM** - leave the area.
- **STOP** - back away, avoid eye contact.
- **SPEAK SOFTLY** - do not shout.
- **NEVER RUN** - always walk away.
- **BE ALERT** - of your surroundings at all times.

