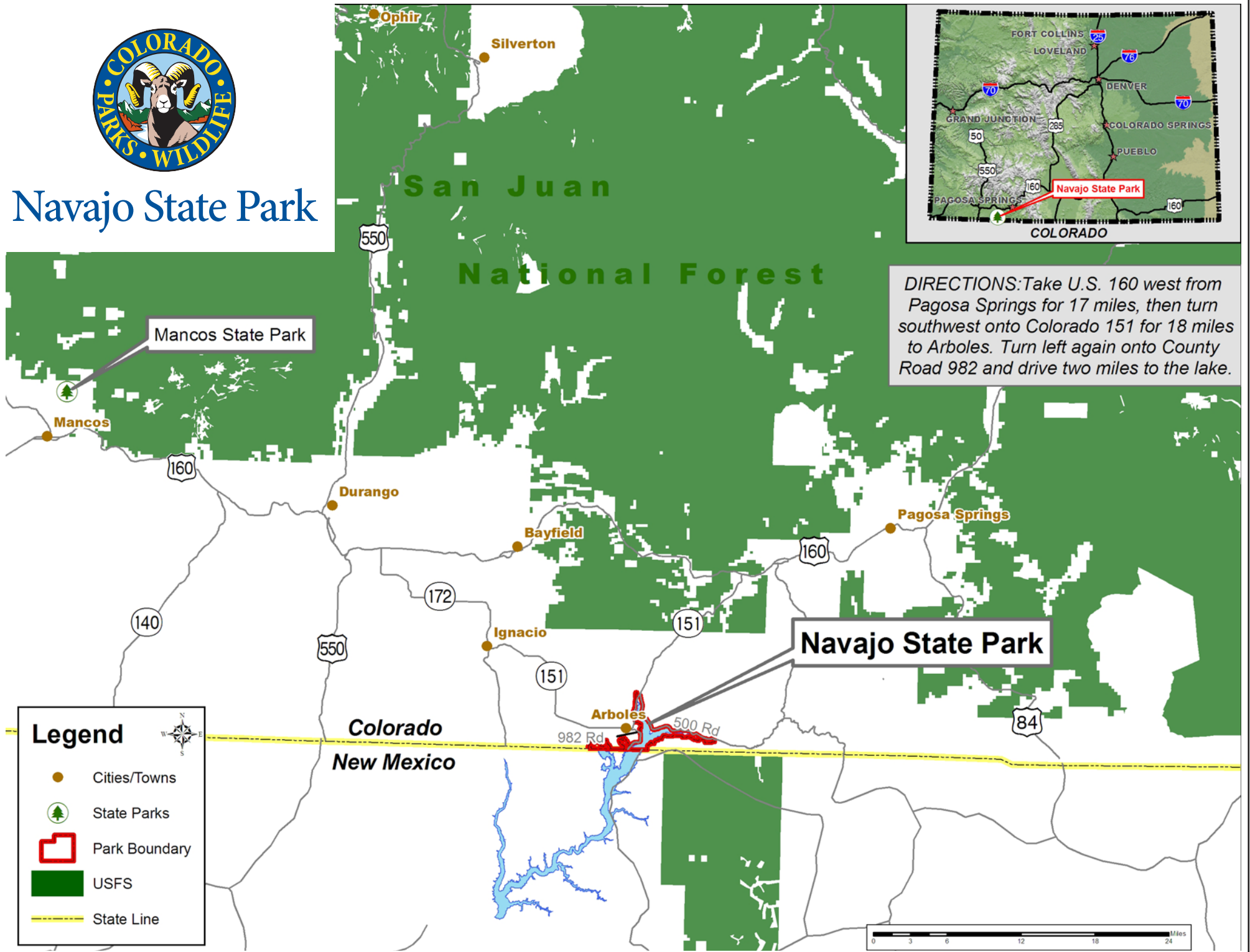




Navajo State Park



DIRECTIONS: Take U.S. 160 west from Pagosa Springs for 17 miles, then turn southwest onto Colorado 151 for 18 miles to Arboles. Turn left again onto County Road 982 and drive two miles to the lake.

Legend

- Cities/Towns
- 🌲 State Parks
- 🔴 Park Boundary
- 🟢 USFS
- State Line

