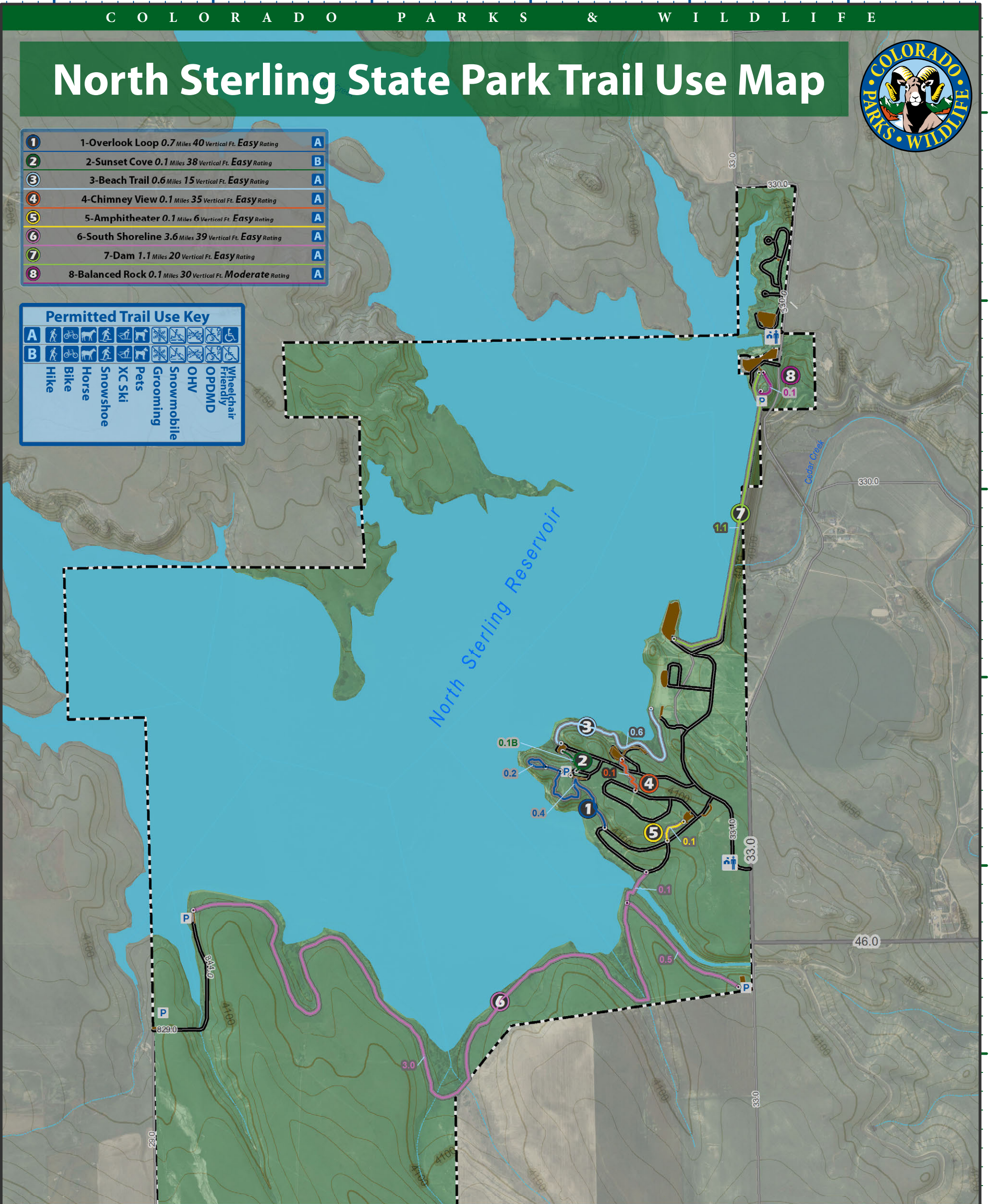




# North Sterling State Park Trail Use Map

1	1-Overlook Loop 0.7 Miles 40 Vertical Ft. Easy Rating	A
2	2-Sunset Cove 0.1 Miles 38 Vertical Ft. Easy Rating	B
3	3-Beach Trail 0.6 Miles 15 Vertical Ft. Easy Rating	A
4	4-Chimney View 0.1 Miles 35 Vertical Ft. Easy Rating	A
5	5-Amphitheater 0.1 Miles 6 Vertical Ft. Easy Rating	A
6	6-South Shoreline 3.6 Miles 39 Vertical Ft. Easy Rating	A
7	7-Dam 1.1 Miles 20 Vertical Ft. Easy Rating	A
8	8-Balanced Rock 0.1 Miles 30 Vertical Ft. Moderate Rating	A

Permitted Trail Use Key	
<b>A</b>	Hike, Bike, Horse, Snowshoe, XC Ski, Pets, Snowmobile, OHV, Wheelchair Friendly, OPDMD
<b>B</b>	Hike, Bike, Horse, Snowshoe, XC Ski, Pets, Snowmobile, OHV, Wheelchair Friendly, OPDMD



**CPW PocketTrail Map # 40 of 60**

North Sterling Trail Use Map: NST\_1of1 showing trails within the Entire Park

Last Updated: 9/5/2013 7:47:34 PM  
 Created by the Colorado State Trails Program  
 Email revisions to: Eric.Drummond@state.co.us

**Infrastructure Legend**

	Visitor Center (0)		Trail Intersections
	Entrance station (2)		CPW Public Roads
	Fee Station (0)		CDOT Highways
	Restroom (0)		CDOT Major Roads
	Campground (0)		CDOT Local Roads
	Drinking Water (0)		CPW Service Roads
	Historic Site (0)		Rivers   Diversions
	Playground (0)		CPW Parking Lots
	Parking (5)		CPW Boundaries
	Scenic Overlook (0)		
	Wildlife Watching (0)		

**Cartographic Information**

0 0.2 0.4 0.6 0.8 Miles

Scale: 1:20,000

Declination as of January 2013:  
 7.8774° changing by -0.1365° per year

Coordinate System: NAD 1983 UTM Zone 13N

Department of Natural Resources Disclaimer:  
 The Colorado Department of Natural Resources ("DNR") is not responsible and shall not be liable to the user for damages of any kind arising out of the use of data or information provided by DNR, including the installation of the data or information, its use, or the results from its use. ANY DATA OR INFORMATION PROVIDED BY THE DNR IS PROVIDED "AS IS" WITHOUT WARRANTY OF ANY KIND, EITHER EXPRESS OR IMPLIED, INCLUDING, BUT NOT LIMITED TO, THE IMPLIED WARRANTIES OF MERCHANTABILITY AND FITNESS FOR A PARTICULAR PURPOSE. Data or information provided by DNR shall be used and relied upon only at the user's sole risk, and the user agrees to indemnify and hold harmless the DNR, its officials, officers and employees from any liability arising out of the use of the data/information provided.

[http://bit.ly/NST\\_1of1](http://bit.ly/NST_1of1)

Download Map as .pdf

Blue GPS Grid = decimal degrees (WGS84)

Green GPS Grid = meters UTM Zone 13 North (NAD 1983)

40.78° N  
40.77° N  
40.76° N  
40.75° N  
40.74° N  
4518,000  
4517,000  
4516,000  
4515,000  
4514,000  
4513,000  
4512,000  
4511,000

643,000 644,000 645,000 646,000 647,000