

ATV TRAILS AND OFF HIGHWAY VEHICLE ROUTES ON BATTLEMENTS & GRAND MESA

WESTERN SLOPE ATV ASSOCIATION
See our web site at www.wsatva.org

THUNDER MOUNTAIN WHEELERS
See our web site at www.tmwatv.org

FOREST SERVICE TRAILS WHERE ATVS ARE ALLOWED

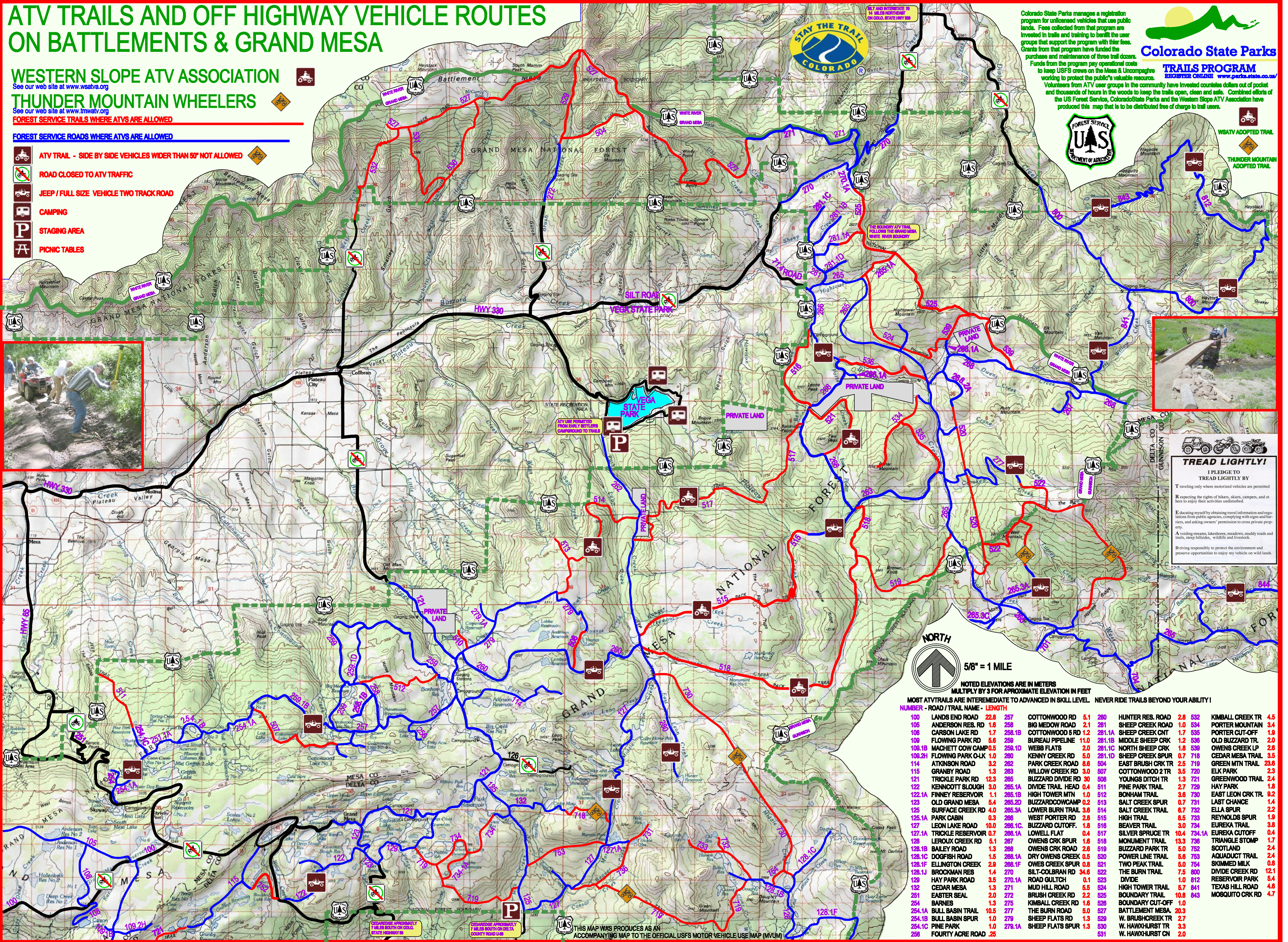
FOREST SERVICE ROADS WHERE ATVS ARE ALLOWED

- ATV TRAIL - SIDE BY SIDE VEHICLES WIDER THAN 50" NOT ALLOWED**
- ROAD CLOSED TO ATV TRAFFIC**
- JEEP / FULL SIZE VEHICLE TWO TRACK ROAD**
- CAMPING**
- STAGING AREA**
- PICNIC TABLES**



Colorado State Parks
TRAILS PROGRAM
REQUIRE ONLINE www.parks.state.co.us/

Colorado State Parks manages a registration program for unlicensed vehicles that use public lands. Fees collected from that program are invested in trails and training to benefit the user groups that support the program with their fees. Grants from that program have funded the purchase and maintenance of three trail dozers. Funds from the program pay operational costs to keep USFS crews on the Mesa & Uncompagme working to protect the public's valuable resource. Volunteers from ATV user groups in the community have invested countless dollars out of pocket and thousands of hours in the woods to keep the trails open, clean and safe. Combined efforts of the US Forest Service, Colorado State Parks and the Western Slope ATV Association have produced this map that is to be distributed free of charge to trail users.



TREAD LIGHTLY!
I PLEDGE TO TREAD LIGHTLY BY

- T raveling only where motorized vehicles are permitted
- R especting the rights of hikers, skiers, campers, and others to enjoy their activities undisturbed.
- E ducating myself by obtaining travel information and regulations from public agencies, complying with signs and barriers, and asking owners' permission to cross private property.
- A voiding streams, lakeshores, meadows, muddy roads and trails, steep hillsides, wildlife and livestock.
- D riving responsibly to protect the environment and preserve opportunities to enjoy my vehicle on wild lands.

NORTH
5/8" = 1 MILE

NOTED ELEVATIONS ARE IN METERS
MULTIPLY BY 3 FOR APPROXIMATE ELEVATION IN FEET
MOST ATV TRAILS ARE INTERMEDIATE TO ADVANCED IN SKILL LEVEL. NEVER RIDE TRAILS BEYOND YOUR ABILITY!

NUMBER - ROAD / TRAIL NAME - LENGTH	NUMBER - ROAD / TRAIL NAME - LENGTH	NUMBER - ROAD / TRAIL NAME - LENGTH
100 LANDS END ROAD 22.8	257 COTTONWOOD RD 5.1	280 HUNTER RES. ROAD 2.8
105 ANDERSON RES. RD 1.8	258 BIG MADOW ROAD 2.1	281 SHEEP CREEK ROAD 1.0
108 CARSON LAKE RD 1.7	258.1B COTTONWOOD S RD 12	281.1A SHEEP CREEK CNT 1.7
109 FLOWING PARK RD 5.6	259 BUREAU PIPELINE 11.0	281.1B MIDDLE SHEEP CRK 1.2
109.1B MACHETT COW CAMP 0.5	259.1D WEBB FLATS 2.0	281.1C NORTH SHEEP CRK 1.8
109.2H FLOWING PARK O-LK 1.0	260 KENNY CREEK RD 5.0	281.1D SHEEP CREEK SPUR 0.7
114 ATKINSON ROAD 3.2	262 PARK CREEK ROAD 8.6	504 EAST BRUSH CRK TR 2.5
115 GRANBY ROAD 1.3	263 WILLOW CREEK RD 3.0	507 COTTONWOOD 2 TR 3.5
121 TRICKLE PARK RD 12.3	265 BUZZARD DIVIDE RD 3.0	508 YOUNGS DITCH TR 1.3
122 KENNICOTT SLOUGH 3.0	265.1A DIVIDE TRAIL HEAD 0.4	511 PINE PARK TRAIL 2.7
122.1A FINNEY RESERVOIR 1.1	265.1B HIGH TOWER MTN 1.0	512 BONHAM TRAIL 3.6
123 OLD GRAND MESA 5.4	265.2D BUZZARD COWCAMP 0.2	513 SALT CREEK SPUR 0.7
125 SURFACE CREEK RD 4.0	265.3A LOWER BURN TRAIL 3.6	514 SALT CREEK TRAIL 6.7
125.1A PARK CABIN 0.3	266 WEST PORTER RD 2.8	515 HIGH TRAIL 8.5
127 LEON LAKE ROAD 10.0	266.1C BUZZARD CUTOFF 1.8	516 BEAVER TRAIL 3.0
127.1A TRICKLE RESERVOIR 0.7	268.1A LOWELL FLAT 0.4	517 SILVER SPRUCE TR 10.4
128 LEROUX CREEK RD 5.1	268 OWENS CRK SPUR 1.6	518 MONUMENT TRAIL 13.3
128.1B BAILEY ROAD 1.3	268 OWENS CRK ROAD 2.6	519 BUZZARD PARK TR 5.0
128.1C DOGFISH ROAD 1.5	268.1F DRY OWENS CREEK 0.5	520 POWER LINE TRAIL 5.6
128.1F ELLINGTON CREEK 2.9	268.1F OWES CREEK SPUR 0.8	521 TWO PEAK TRAIL 5.0
128.1J BROCKMAN RES 1.4	270 SILT-COLBURN RD 34.6	522 THE BURN TRAIL 7.5
129 HAY PARK ROAD 3.5	270.1A ROAD GULCH 0.1	523 DIVIDE 1.0
132 CEDAR MESA 1.3	271 MUD HILL ROAD 5.5	524 HIGH TOWER TRAIL 5.7
251 EASTER SEAL 2.0	272 BRUSH CREEK RD 2.2	525 BOUNDARY TRAIL 10.8
254 BARNES 1.3	275 KIMBALL CREEK RD 1.6	526 BOUNDARY CUT-OFF 1.0
254.1A BULL BASIN TRAIL 10.5	277 THE BURN ROAD 5.0	527 BATTLEMENT MESA 20.3
254.1B BULL BASIN SPUR 1.0	279 SHEEP FLATS RD 1.3	529 W. BRUSH CREEK TR 2.7
254.1C PINE PARK 1.0	278.1A SHEEP FLATS SPUR 1.3	530 W. HAWKHURST TR 3.3
258 FORTY ACRE ROAD 25	531	531 W. HAWKHURST CN 2.0

SEMI-SCALE APPROXIMATELY 7 MILES SOUTH ON DELTA STATE HIGHWAY 65

SEMI-SCALE APPROXIMATELY 7 MILES SOUTH ON DELTA COUNTY ROAD 148

THIS MAP WAS PRODUCED AS AN ACCOMPANYING MAP TO THE OFFICIAL USFS MOTOR VEHICLE USE MAP (MVUM)