

Entrance Fees

All vehicles entering Colorado State Parks are required to display a Daily or Annual State Parks Vehicle Pass on the windshield. A Camping Permit and a Vehicle Pass are required for camping. Daily Passes and Camp Permits can be purchased at the Entrance Station, self-serve stations or the visitor center. Annual Park Passes and discounted Aspen Leaf Annual Passes (for Colorado residents 64 years and older) are also available. Anyone entering the park by walking, bicycling or on horseback must purchase a \$4 individual entrance pass.

Camping

Vega State Park provides visitors with several camping options. Most campsites are within easy walking distance of the shoreline. Early Settlers Campground offers 34 pull-through and back-in campsites, with electrical and water hookups, flush toilets and coin-operated showers. Aspen Grove Campground has 28 pull-through and back-in sites with centrally located water pumps and vault toilets. Oak Point Campground provides 37 pull-through and back in sites with centrally located water pumps and vault toilets. For a more unique experience, Pioneer Campground offers 10 walk-in tent sites and five rustic cabins, with centrally located water pumps and vault toilets. Campgrounds are open during the spring, summer and fall months. An RV dump station is located near Early Settlers Campground, just north of the visitor center. Cabins are available year round. To reserve a campsite or a cabin, call 1-800-244-5613, or visit Vega online at www.cpwshop.com.

Corrals & Pets

Horse corrals are adjacent to the cabins on USFS Road #262 that leads to the Grand Mesa National Forest. Corrals can be reserved by calling the visitor center (970)487-3407. Additional fees apply for use of the corrals and bringing a pet to the cabins. There are no fees for pets at the campsites but please keep them attended, under control, on a six foot leash and be sure to clean up their waste.

Picnicking

Vega State Park offers several quiet day-use picnic areas overlooking the lake. Located adjacent to Aspen Grove Campground, the covered Meadows Group Picnic Area provides a beautiful setting for family reunions, weddings and other events. This handicap accessible area will accommodate 100 people and includes: a huge BBQ grill, serving tables, water, electricity, picnic tables and a large grass field for sport activities. To reserve up to one year in advance, call the visitor center at (970)487-3407.

Fishing & Hunting

Vega's two-mile long reservoir is the largest body of water in the Grand Valley. A Colorado Fishing License is required for everyone 16 years and older and can be purchased at the visitor center. Many people catch their 4-fish limit of Rainbow, Cutthroat, or Cutbow Trout. Oak Point day use area has a handicap accessible fishing dock. Hunting is permitted in the park during established seasons from the first Tuesday after Labor Day to the Friday before Memorial Day. Archery or shotgun loaded with birdshot is permitted. Many hunters will camp in the park and hunt the nearby Grand Mesa National Forest. Colorado hunting statutes and regulations apply.



Wildlife

Easily observable wildlife include: marmots, mule deer, chipmunks, weasels, porcupines, and foxes. Rarer sightings include: black bear, beavers, elk and moose. Over 100 species of birds share Vega's habitat including waterfowl, ospreys, hawks, hummingbirds, bluebirds, blue grouse, and wild turkeys. Educational hikes and programs are offered during the summer and throughout the year by calling in advance.

Motorized Recreation

The OHV/snowmobile staging area is located in the southwest corner of the park. It provides parking with easy access to the Grand Mesa National Forest via US Forest Service Road 262 (Park Creek Road). Although snowmobile operation is permitted in most areas of the park, the operation of four-wheelers (OHV) is not permitted. Only campers at Early Settlers and Pioneer cabin areas are allowed to drive their OHV from their site to USFS Road 262. Other campground users are required to trailer their OHVs to the staging area. OHVs and snowmobiles must have a current registration and tow vehicles are required to have a state parks pass while using the staging area.

Boating & Water Sports

Vega's vast reservoir offers opportunities for sailing, canoeing, water-skiing, and jet-skiing. Swimming is allowed in designated wakeless zones only. Boat ramps are available at day use areas located near Early Settlers, Oak Point and Island campgrounds. Motorboats and sailboats must be registered and inspected for Aquatic Nuisance Species at the Entrance Station or Visitor Center before launching. Colorado boating statutes and regulations apply.

Winter Recreation

Come and enjoy Vega's Winter Wonderland! Vega offers some of the best areas for ice-fishing, cross-country skiing, snowshoeing, and snowmobiling. The rustic cabins can be reserved year-round and are located near USFS Road 262 with access to the Grand Mesa National Forest.

Non-Park Accommodations

A restaurant is located adjacent to the park. Commercial, religious, and medical facilities can be found in Collbran 12 miles west of the park.

All-terrain Wheelchairs

Vega has two all-terrain, non electric, wheelchairs, free of charge for anyone needing help with access to trails or the shoreline. Please inquire at the visitor center for more information.

Friendly Reminders

In the interest of public safety and park preservation, we ask that you:

1. Obey posted speed limits & keep vehicles on designated roads and parking areas.
2. Place trash and recycling in proper containers.
3. Build fires in grills provided or portable grills.
4. Camp only in designated campsites.
5. Respect quiet hours from 10 PM to 6 AM.

First Aid

First aid can be obtained at the Entrance Station, visitor center, or from any Park Ranger. An ambulance with EMTs is located in Collbran. For medical or law enforcement emergencies dial 911.



Vega State Park

P.O. Box 186 • Collbran, CO 81624
(970) 487-3407 • vega.park@state.co.us

cpw.state.co.us



Funded in part by Great Outdoors Colorado through Colorado Lottery proceeds.

CPW_RMVF_4K_1/22

COLORADO PARKS & WILDLIFE

Vega State Park

ENJOY YOUR STATE PARKS

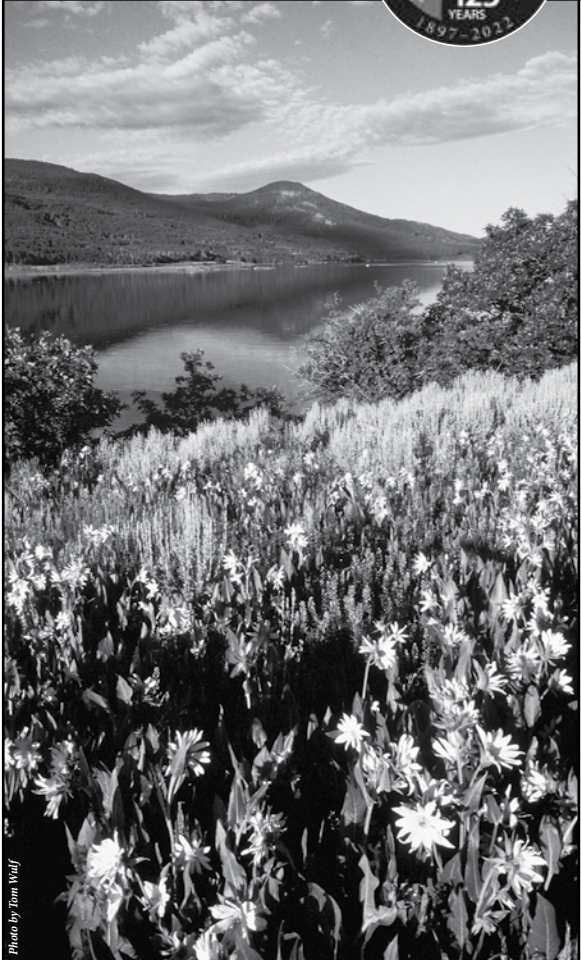
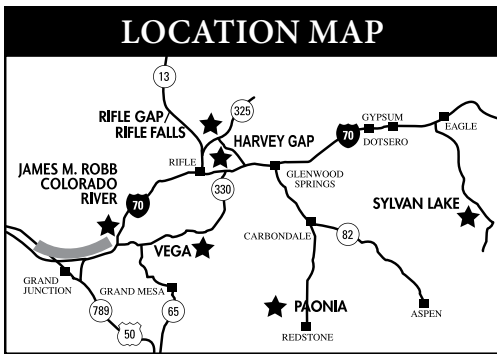


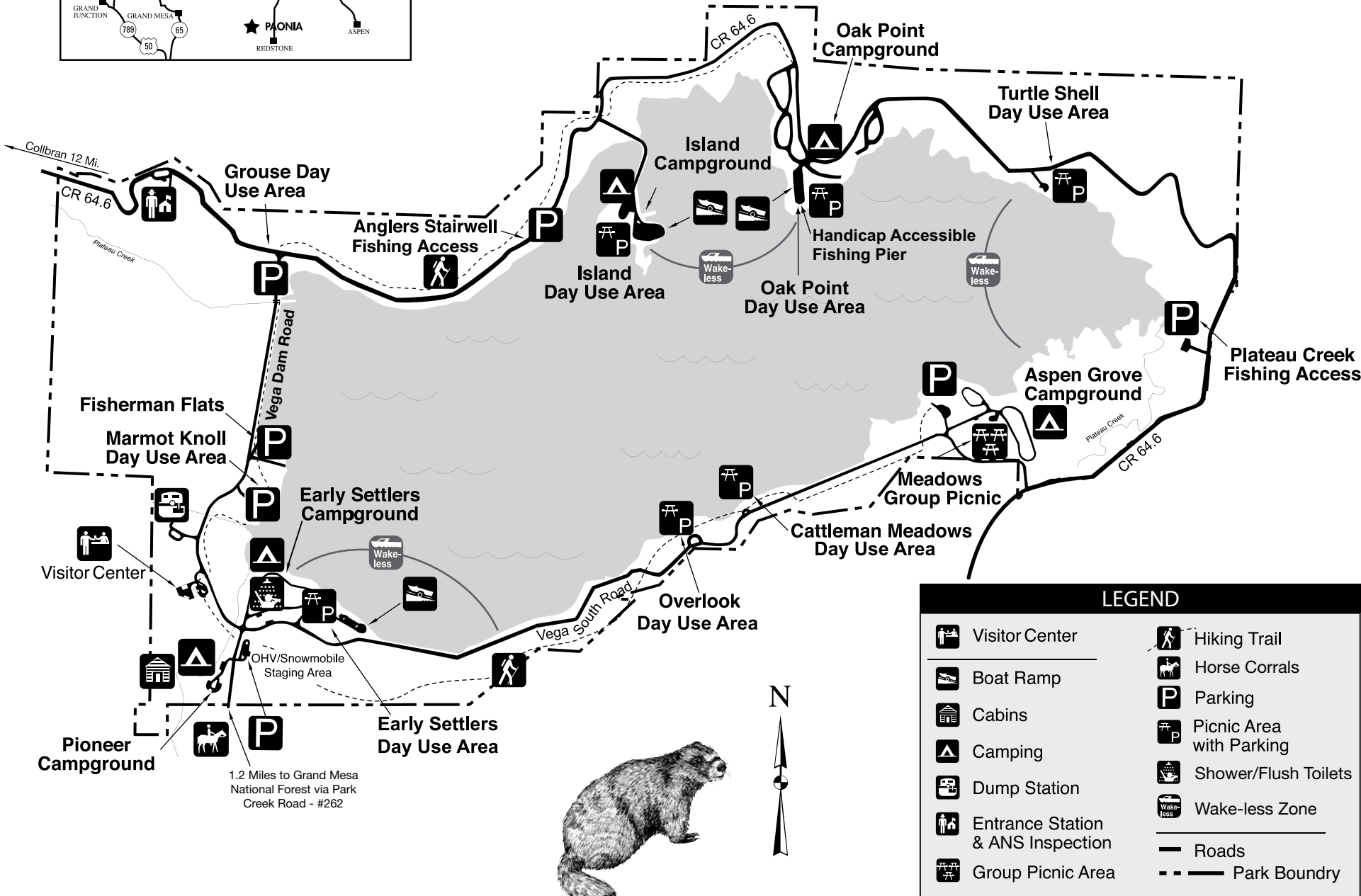
Photo by Tom Wolf



cpw.state.co.us



Vega State Park



High above the little mountain town of Collbran lies Vega State Park, with 1,842 acres of scenic mountain splendor nestled on the northern edge of the Grand Mesa. The park's name comes from the Spanish word for "Meadows." Visitors enjoy the vibrant montane meadows of wildflowers, aspen-covered hillsides, deer, foxes, bluebirds and more.

At 8000 feet in elevation, Vega Reservoir and its meadows are rich in history and natural beauty. The Ute Indians inhabited this region prior to the 1776 visit from Spanish explorers, Dominguez and Escalante. In the 1880's, early Plateau Valley settlers constructed houses and a cemetery in the area now known as Vega State Park.

By 1957, construction of the Dam began. With completion of Vega dam in 1962, a 900-acre reservoir was formed. In 1959, Vega State Park was established in partnership with the Colorado Division of Parks and Outdoor Recreation and the U.S. Bureau of Reclamation.

Although the primary goal of the reservoir is to supply irrigation water to ranchers and farmers, Vega quickly became a great camping, boating and fishing destination. Snowmobiling, ice-fishing and rustic cabins also make Vega a well-known winter sports area. With easy access to the Grand Mesa National Forest, many campers and hunters travel by four-wheelers, horseback or snowmobile to more than 300 miles of trails south of Vega.

We invite you to explore and enjoy Vega State Park's unique Colorado experience!

Visitor Center

Located south of the dam, the visitor center offers exceptional educational displays, handicap accessible restrooms and a gift shop. By purchasing firewood, nature items or souvenirs, you will help sustain Vega's environmental education programs. Other items for sale include: park passes; camping permits; boat, OHV or snowmobile registrations; fishing and hunting licenses.